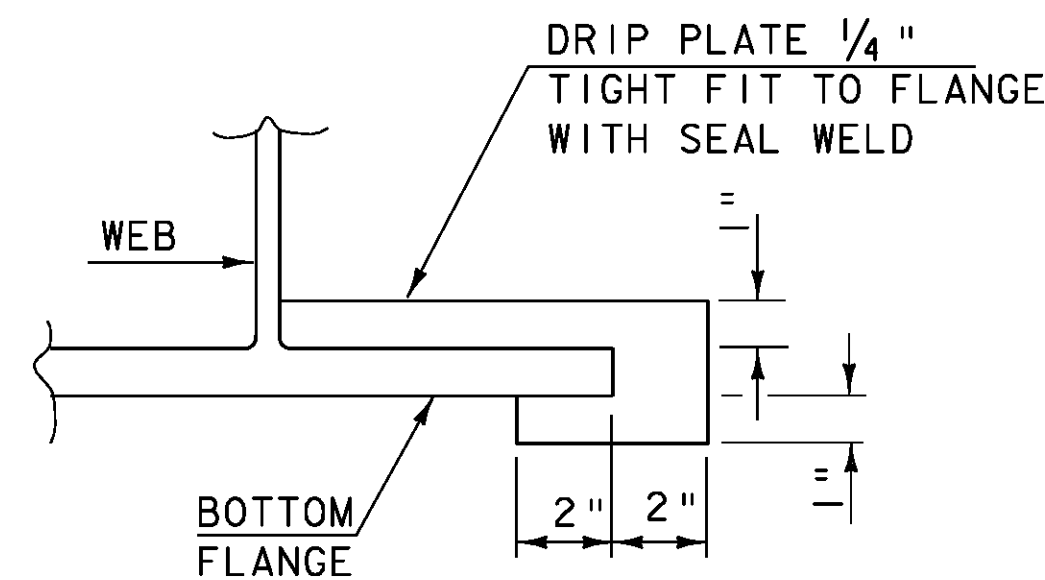


PLAN DRIP PLATE

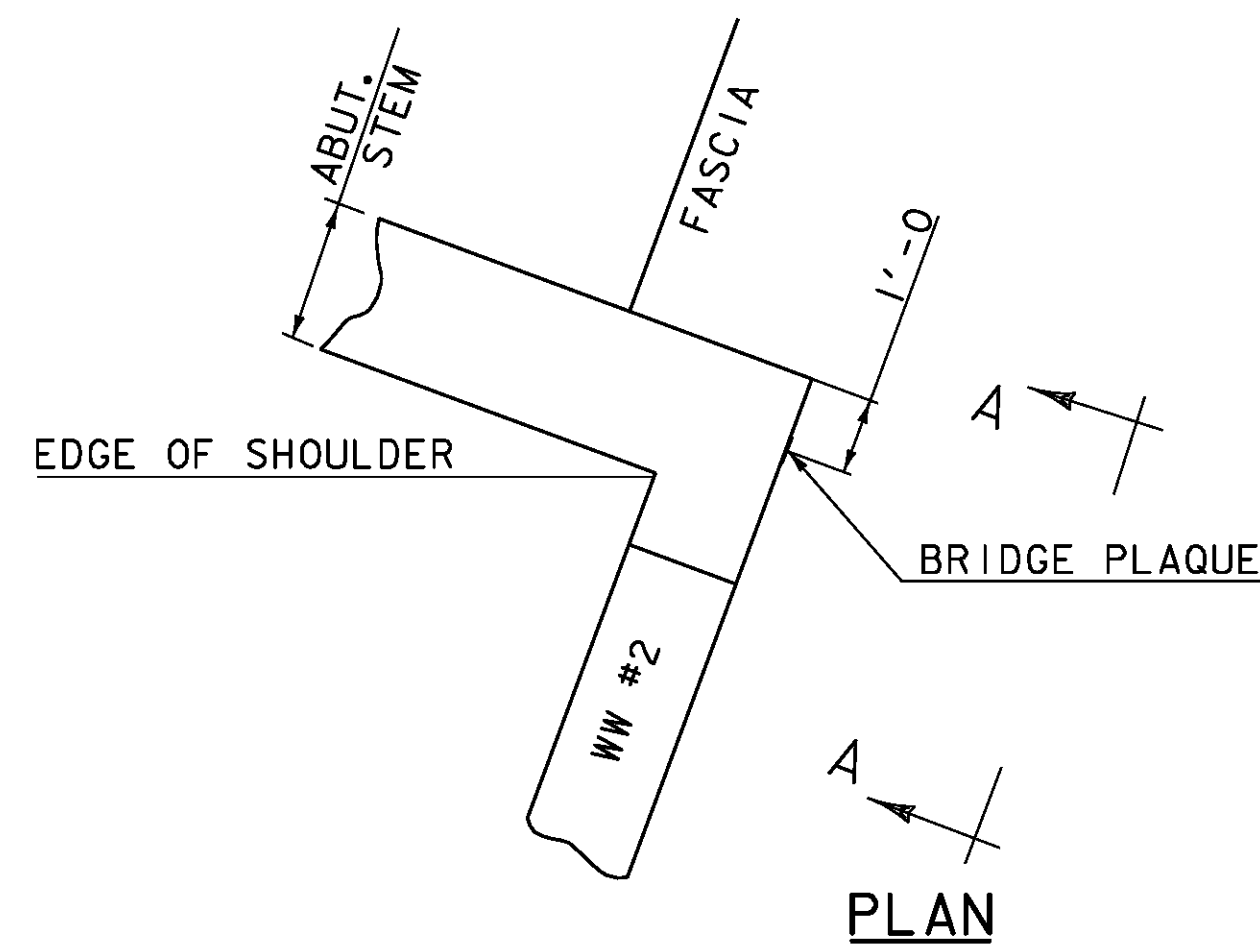
(NOT TO SCALE)

NOTE: DRIP PLATES SHALL BE PLACED ON OUTSIDE EDGE OF FASCIA GIRDERS ON THE HIGH SIDE OF ALL PIERS AND ABUTMENTS OR AS INDICATED ON PROJECT PLANS.

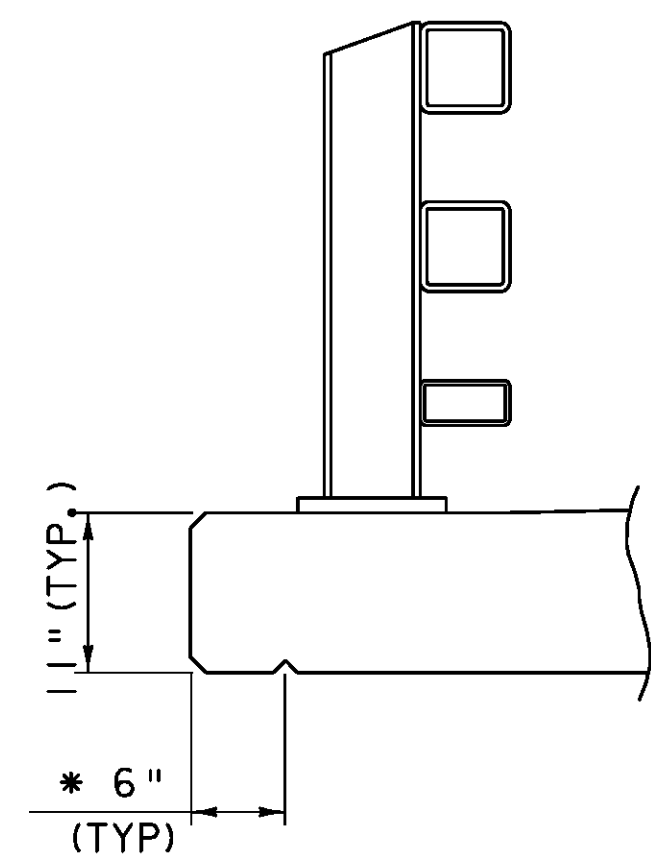


SECTION A-A

(NOT TO SCALE)



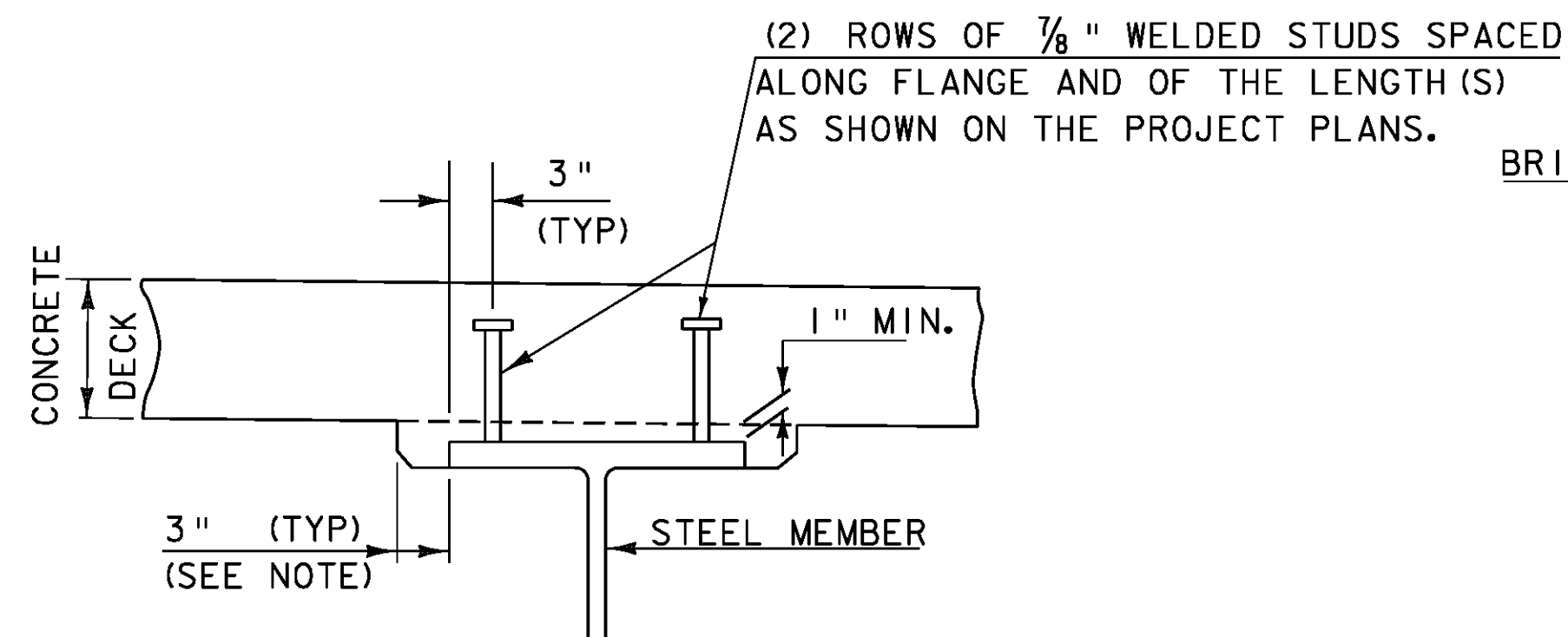
PLAN



DRIP NOTCH DETAIL

(NOT TO SCALE)

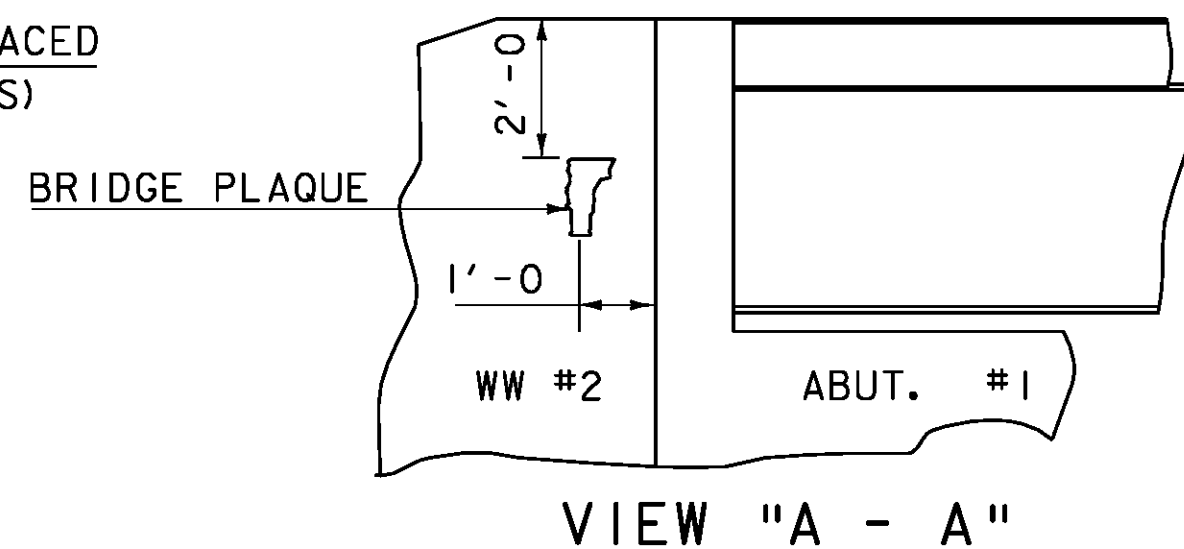
* 3/4" to 2" DRIP NOTCH STOP DRIP NOTCH 3' FROM FACE OF ABUTMENT AND OUTLET @ 45 DEGREES TO FASCIA



HAUNCH AND SHEAR CONNECTOR DETAIL

(NOT TO SCALE)

NOTE: THE 3" HORIZONTAL SECTION MAY BE ELIMINATED FOR FORMING SYSTEMS DESIGNED FOR THE CONSTRUCTION OF VERTICAL HAUNCHES. ANY VOIDS RESULTING FROM FORMING SYSTEM ELEMENTS SHALL BE FILLED WITH JOINT SEALER, POLYURETHANE MEETING THE REQUIREMENTS OF SECTION 524. THE COST OF THE JOINT SEALER, POLYURETHANE SHALL BE INCIDENTAL TO THE ADJACENT CONCRETE.

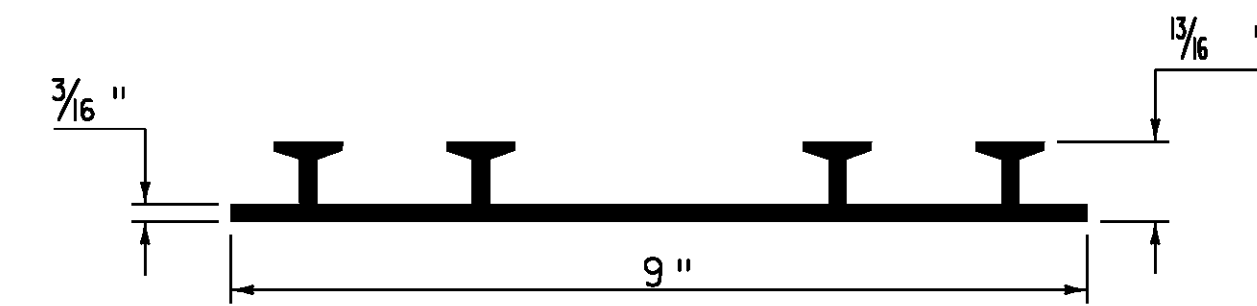


BRIDGE PLAQUE

(NOT TO SCALE)

THE BRIDGE PLAQUE WILL BE SUPPLIED BY THE AGENCY OF TRANSPORTATION AND SHALL BE INSTALLED BY THE CONTRACTOR AT ABUTMENT #1 ON THE RIGHT SIDE AS SHOWN OR AS DIRECTED BY THE ENGINEER.

PAYMENT FOR INSTALLATION OF THE BRIDGE PLAQUE SHALL BE INCIDENTAL TO THE ADJACENT CONCRETE.

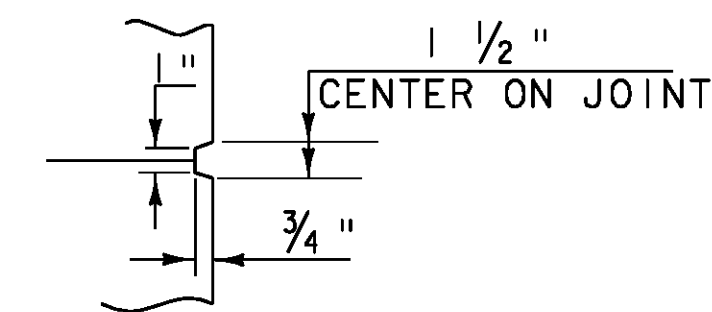


P.V.C. WATERSTOP FOR CONSTRUCTION JOINTS

(NOT TO SCALE)

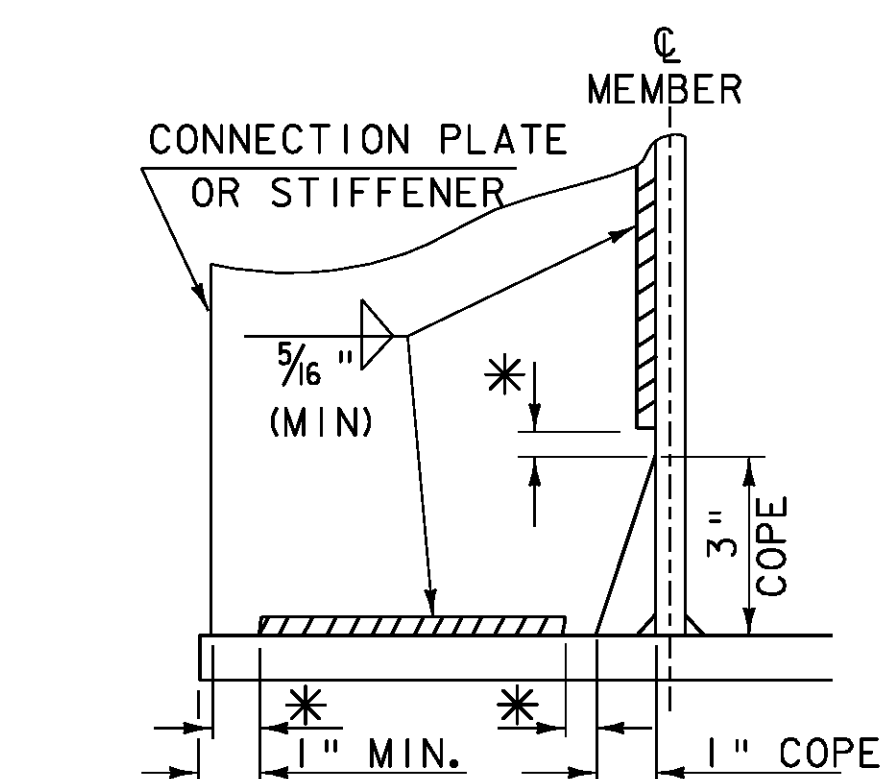
PAYMENT FOR THE P.V.C. WATERSTOP SHALL BE INCIDENTAL TO THE UNIT BID PRICE FOR THE ADJACENT CONCRETE.

OTHER CONFIGURATIONS OF WATERSTOP MAY BE USED UPON APPROVAL OF THE ENGINEER.



SCORE MARK DETAIL

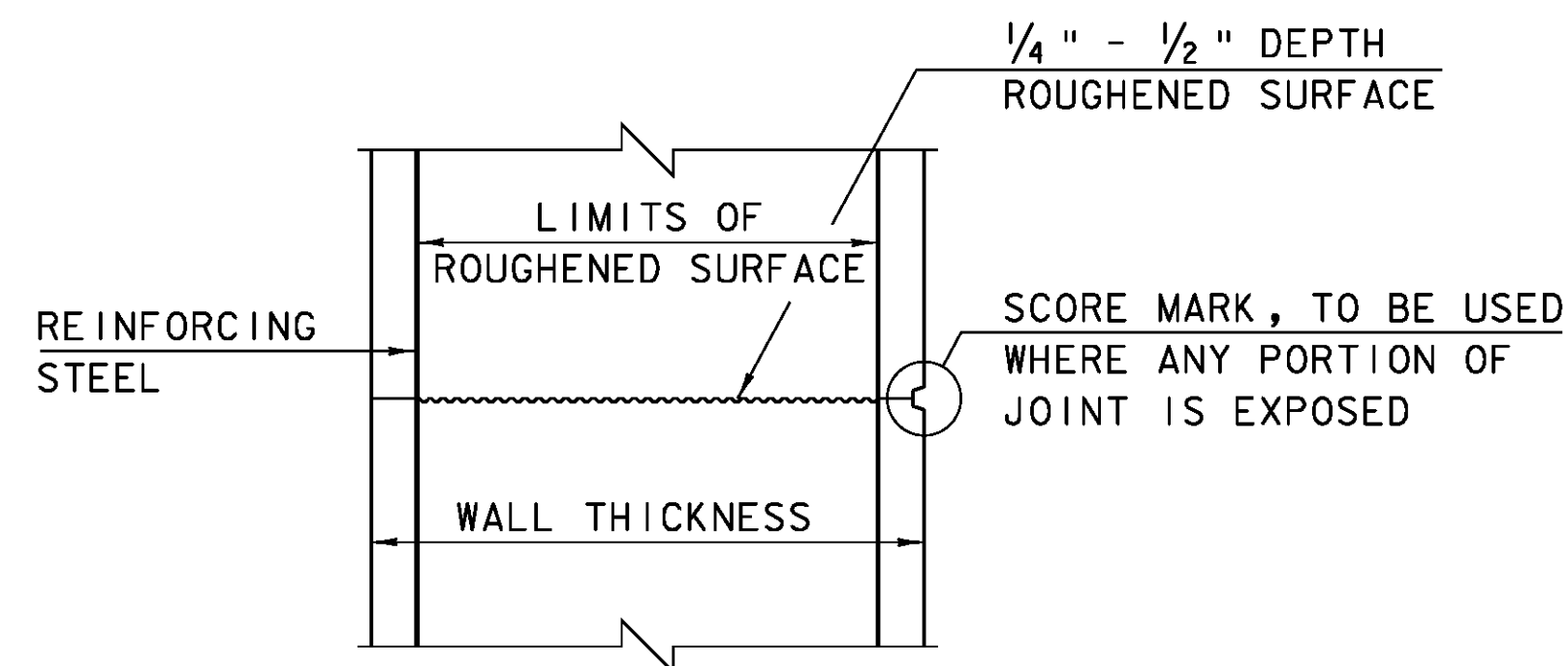
(NOT TO SCALE)



WELD TERMINATION AND COPING DETAILS FOR STEEL MEMBERS

(NOT TO SCALE)

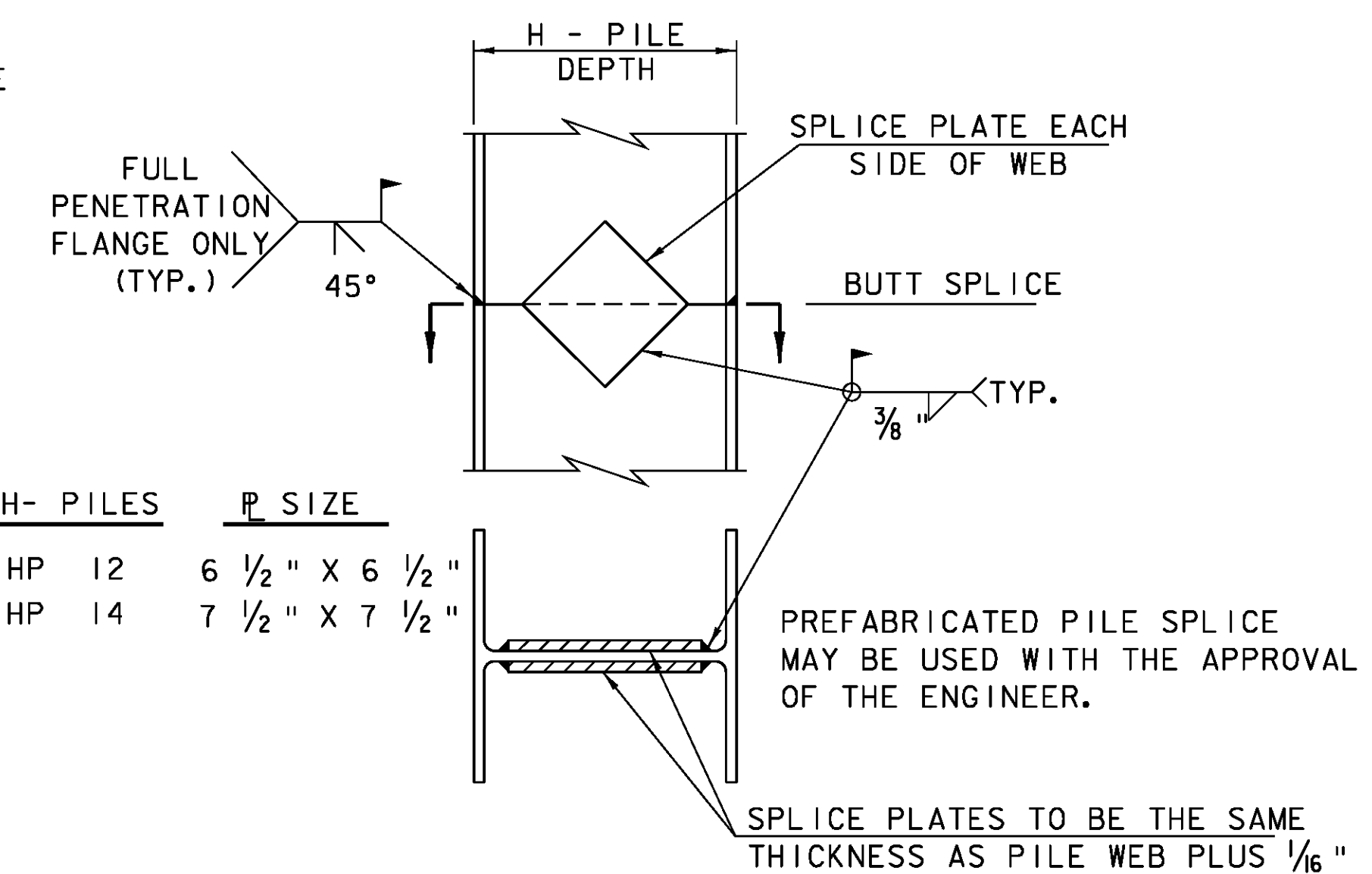
*NO WELD FOR 3/8" MIN. 7/8" MAX. (EXCEPT MUST MAINTAIN 1" MINIMUM FROM EDGE OF FLANGE)



TYPICAL HORIZONTAL CONSTRUCTION JOINT

(NOT TO SCALE)

1. THE SURFACE OF THE CONCRETE CONSTRUCTION JOINTS SHALL BE CLEANED AND FREE OF LAITANCE.
2. IMMEDIATELY BEFORE NEW CONCRETE IS PLACED, ALL CONSTRUCTION JOINTS SHALL BE WETTED AND STANDING WATER REMOVED.



DETAIL OF PILE SPLICE

(NOT TO SCALE)

PROJECT NAME: JAMAICA
PROJECT NUMBER: BRO 1442(27)

FILE NAME: s96j068det.dgn
PROJECT LEADER: K. HIGGINS
DESIGNED BY: J. LACROIX
MISCELLANEOUS DETAILS

PLOT DATE: 19-OCT-2009
DRAWN BY: K. PATTERSON
CHECKED BY: J. LACROIX
SHEET 18 OF 44