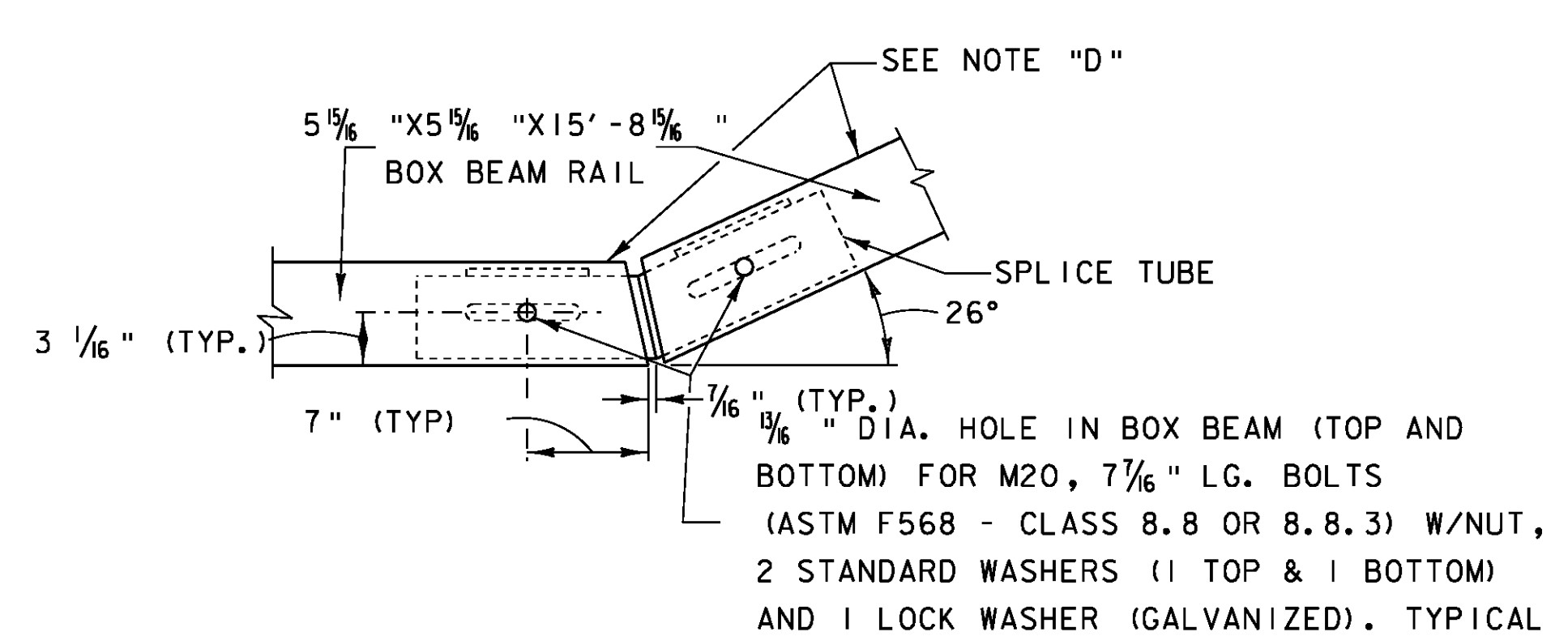


HEAVY POST DETAIL

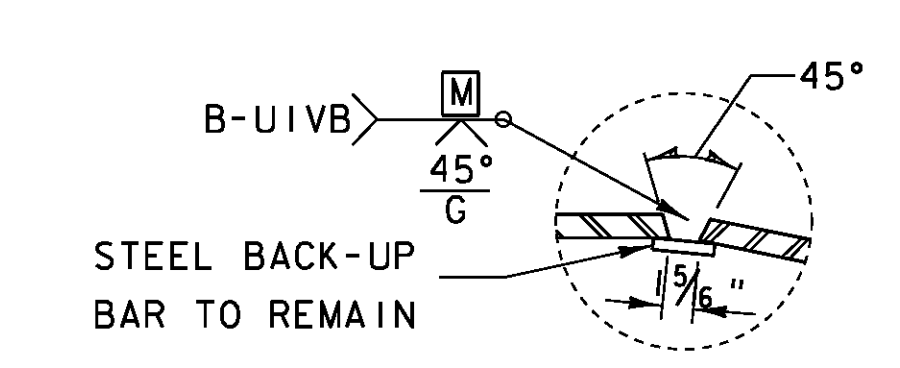
TRANSITION POST DETAIL

PERMISSABLE TO CUT ALONG THIS LINE FOR DRIVING (TYPICAL ON ALL GUIDE RAIL POSTS)



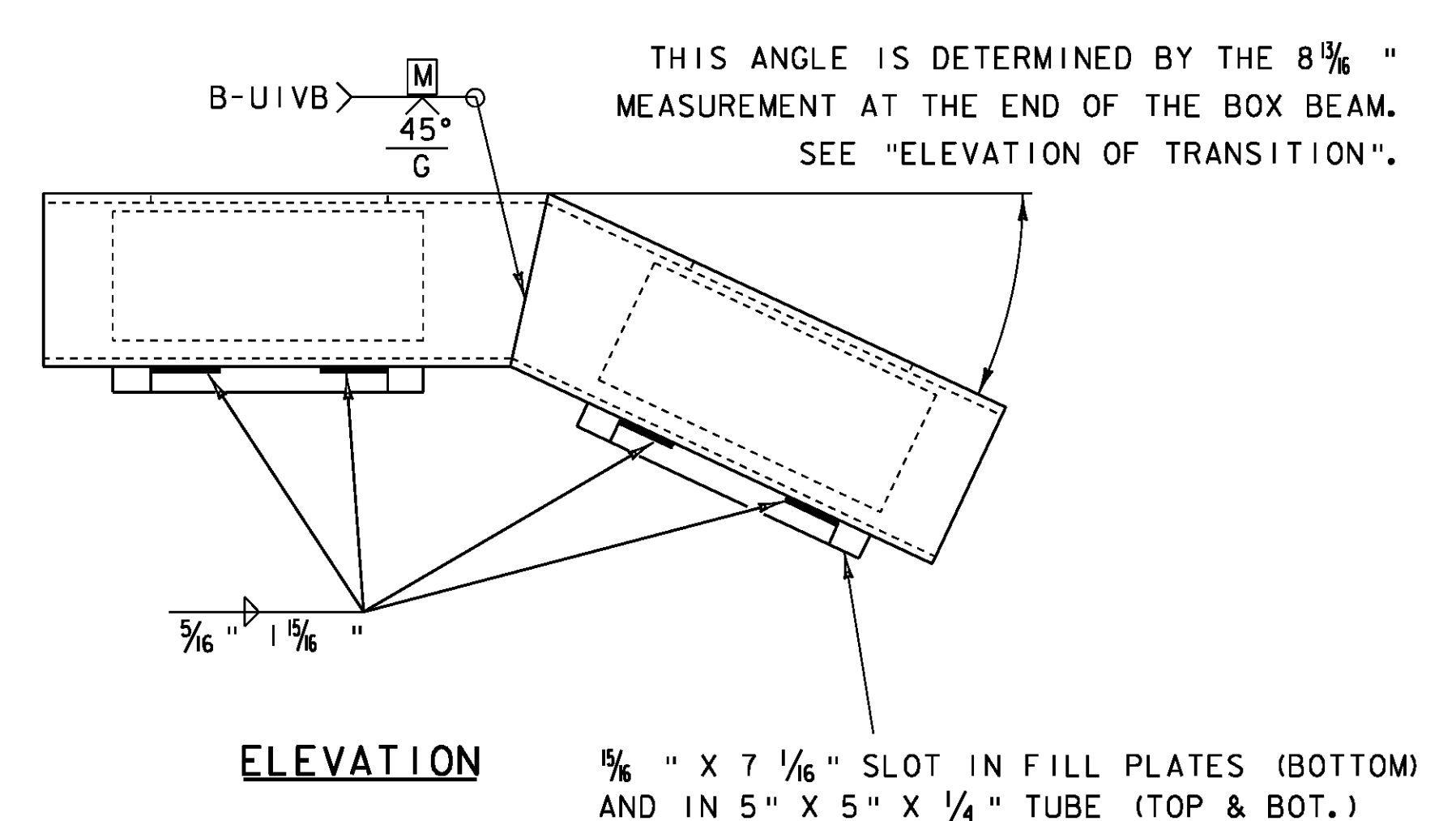
SPLICE DETAIL AT TURN BACK IN LOWER TRANSITION GUIDE RAIL

NTS



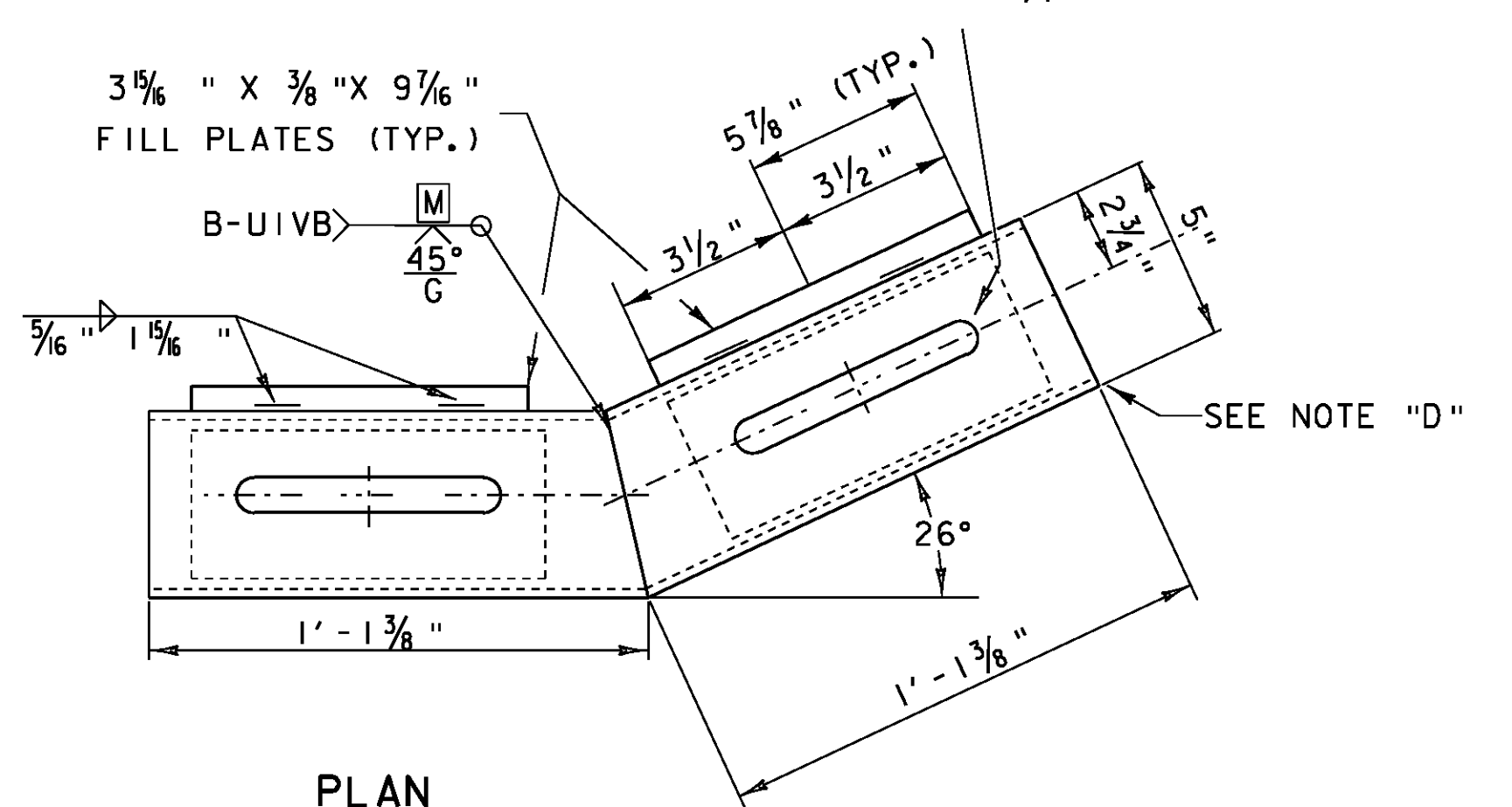
WELD DETAIL FOR SPLICE TUBE

NTS



ELEVATION

THIS ANGLE IS DETERMINED BY THE 8 1/4 " MEASUREMENT AT THE END OF THE BOX BEAM. SEE "ELEVATION OF TRANSITION".



PLAN

SPLICE TUBE DETAIL FOR TURN BACK

NTS

NOTES:
 NOTE "D"
 PROTRUSIONS CAUSED BY WELDING OR GALVANIZING ARE NOT PERMITTED ON THE ADJOINING SURFACES OF THE BOX BEAM RAILS, SPLICE TUBES AND FILL PLATES.
 NOTE "E":
 HOLES IN THE POST FOR THE LOWER RAIL MAY BE LOCATED AND DRILLED IN THE FIELD. IF SO, THE GALVANIZING SHALL BE REPAIRED IN ACCORDANCE WITH SECTION 525.
 ALL DIMENSIONS ARE SHOWN IN FEET & INCHES UNLESS OTHERWISE NOTED.

PROJECT NAME:	JAMAICA
PROJECT NUMBER:	BRO 1442(27)
FILE NAME:	s96j068rclldet.dgn
PROJECT LEADER:	K. HIGGINS
DESIGNED BY:	VTRANS
CHECKED BY:	VTRANS
BRIDGE RAILING DETAIL SHEET #4	
PLOT DATE:	17-DEC-2009
DRAWN BY:	VTRANS
CHECKED BY:	VTRANS
SHEET 4	OF 4