

GPS CONTROL POINTS

HVCTRL #1

T 127 AZ MK  
 NORTH = 209820.66  
 EAST = 1578913.51  
 ELEV. = 553.80

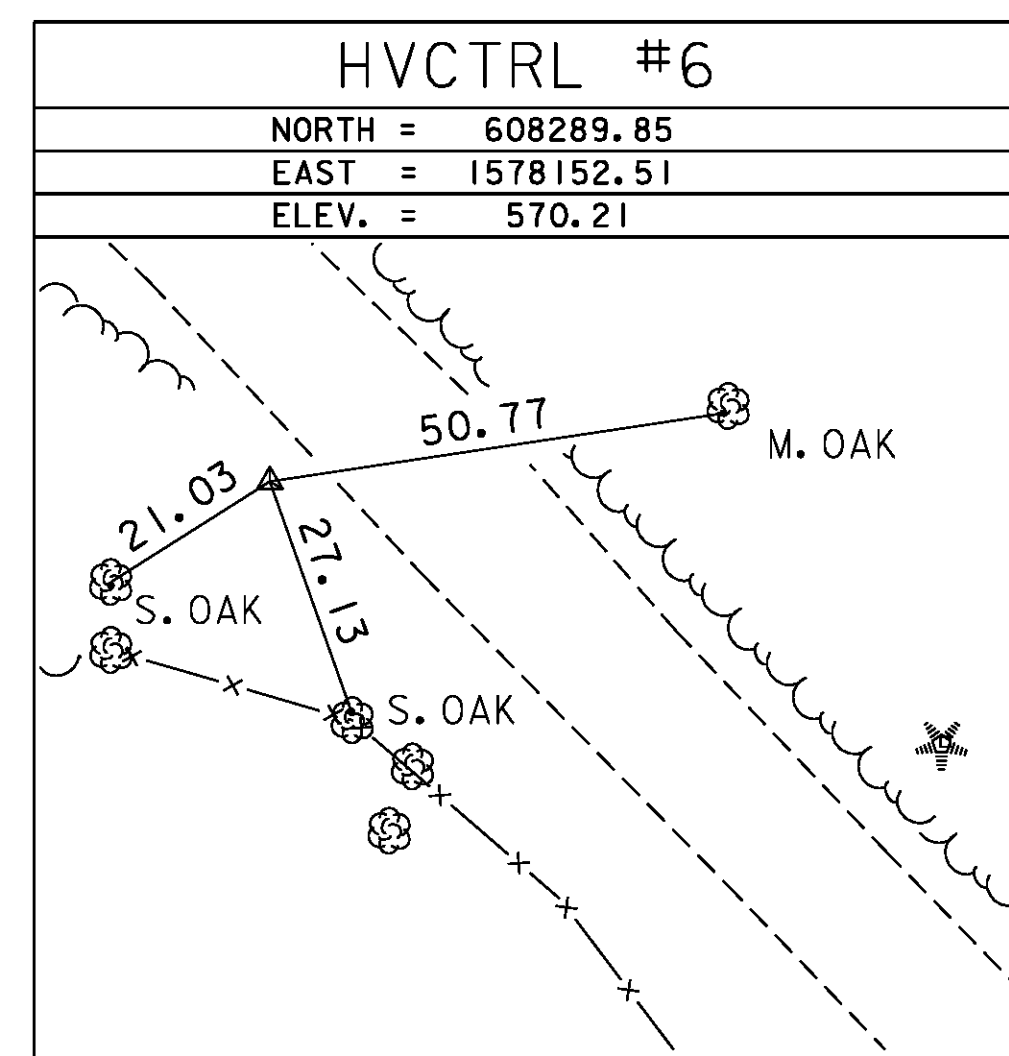
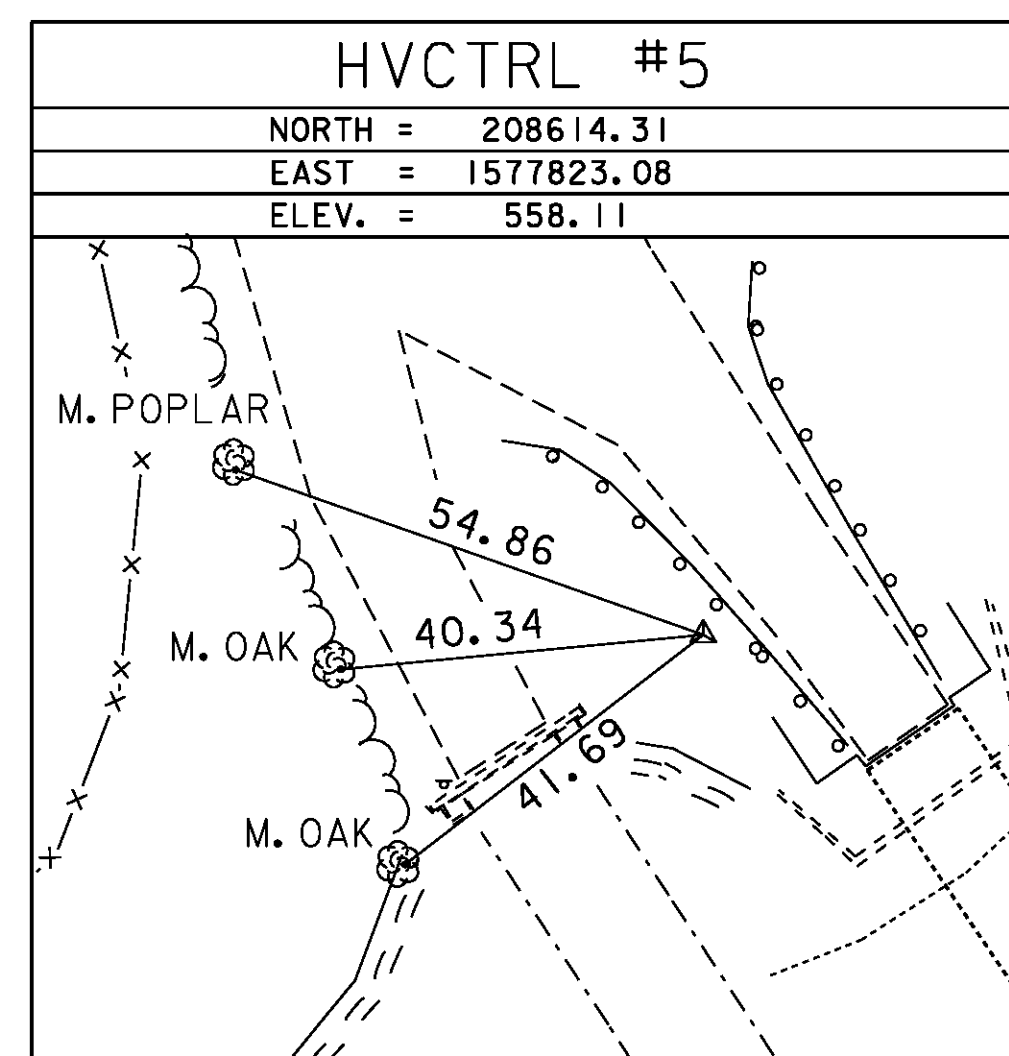
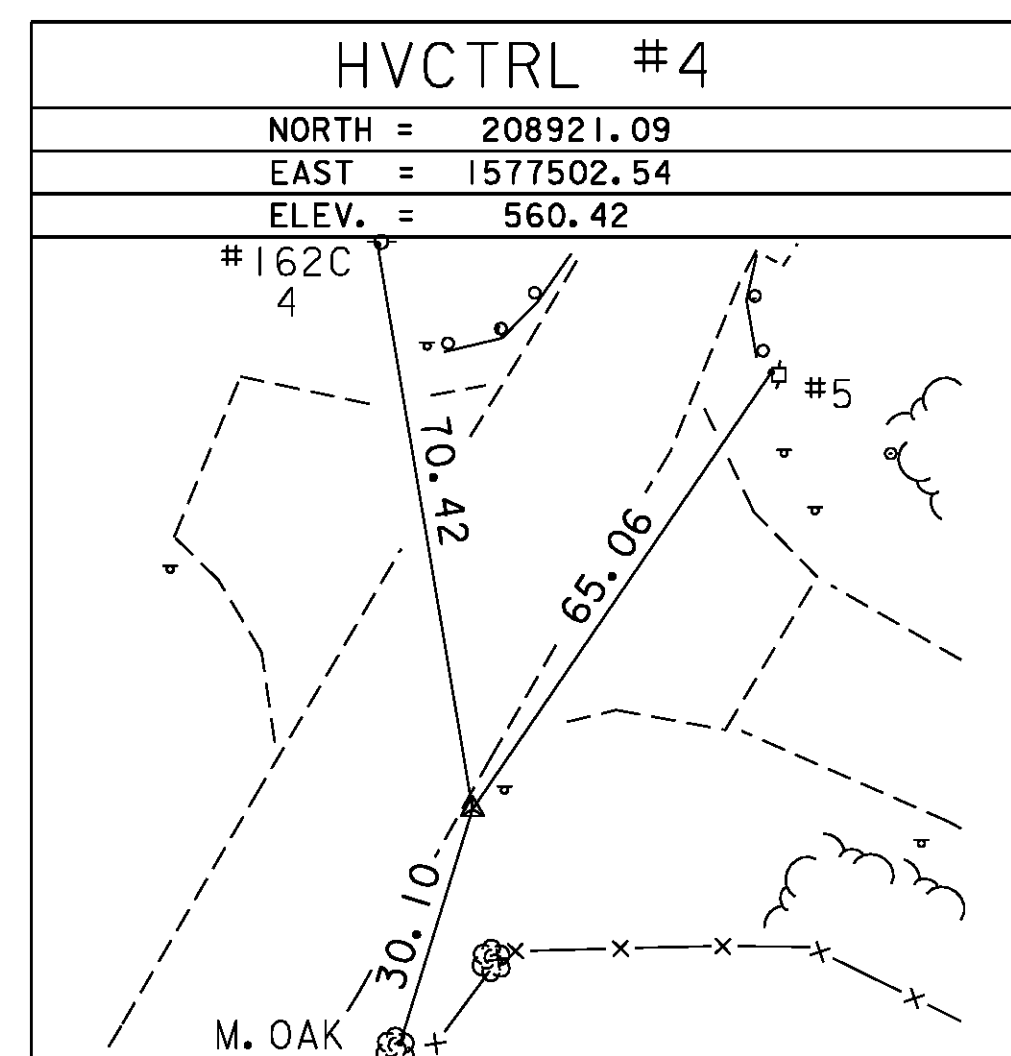
GENERAL LOCATION, JAMAICA, VT. TO REACH FROM THE MOST SOUTHERLY INTERSECTION OF VT ROUTES 100 AND 30 IN EAST JAMAICA GO EAST ALONG VT ROUTE 30 FOR 0.2 MI (0.3 KM) TO THE MARK ON THE RIGHT OPPOSITE A LEDGE CUT. THE MARK IS SET IN THE TOP OF A FENO TYPE MONUMENT FLUSH WITH GROUND SURFACE. IT IS 1.9 M (6.2 FT) SOUTH OF AND ABOUT LEVEL WITH THE SOUTH EDGE OF PAVEMENT OF VT ROUTE 30, 5.0 M (16.4 FT) WEST NORTHWEST OF POLE NO. 594/514, 21.0 M (68.9 FT) NORTHWEST OF A 60 CM PINE, AND 0.3 NORTH OF A FIBERGLASS WITNESS POST

HVCTRL #2

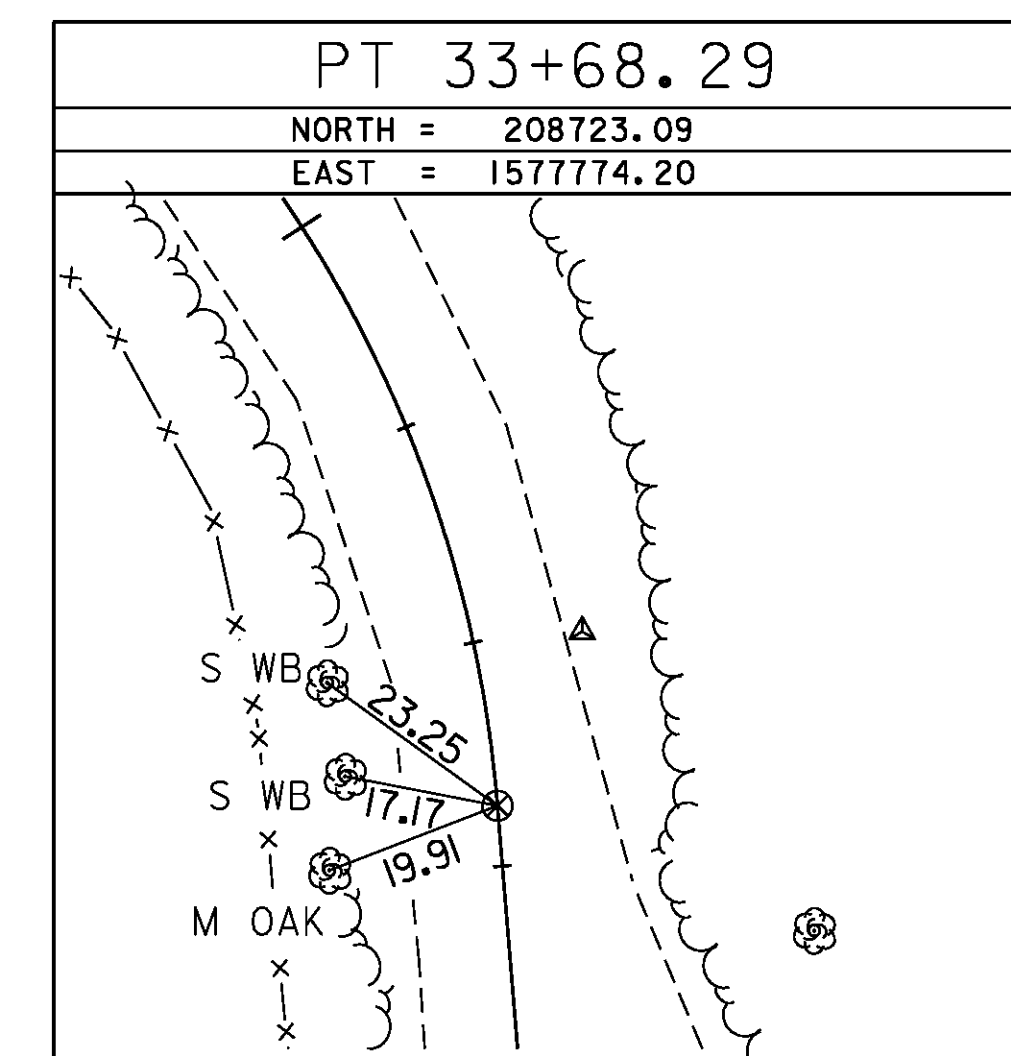
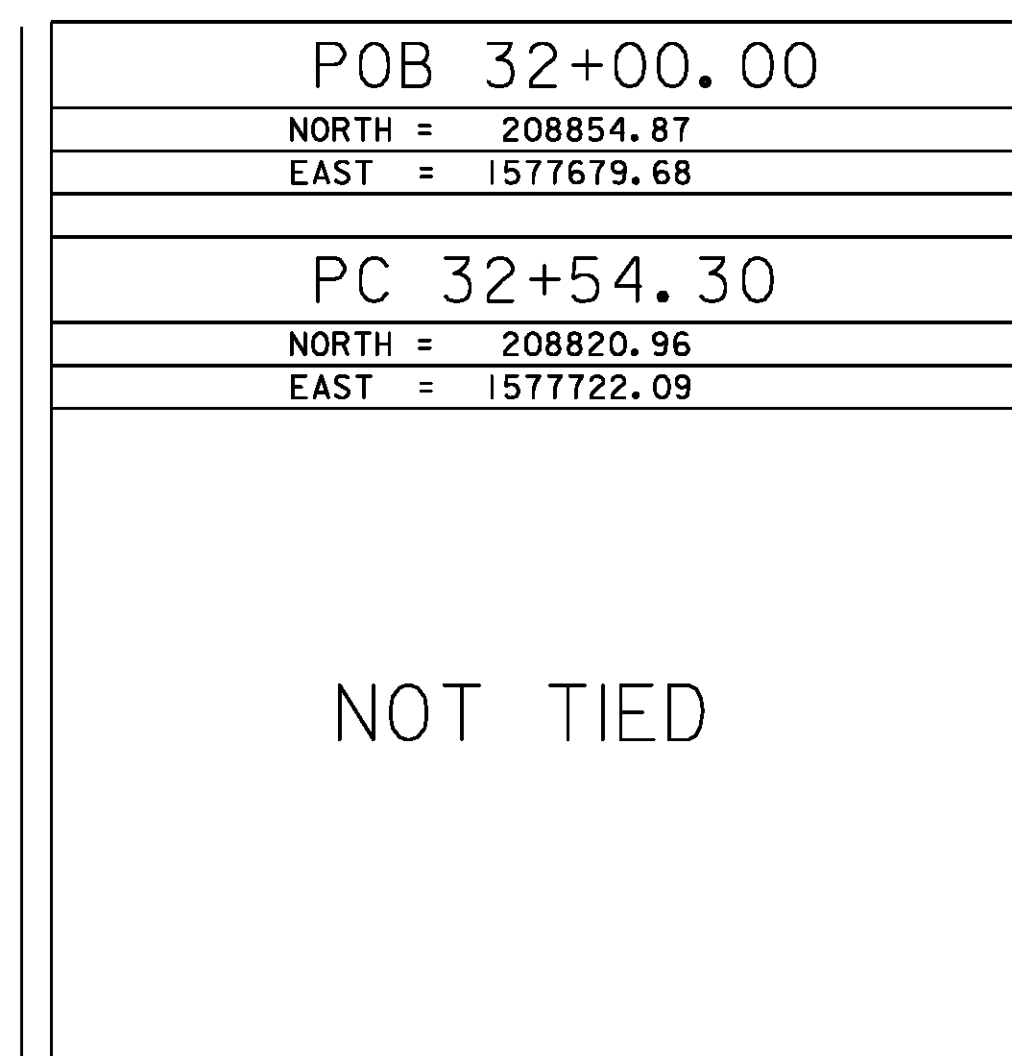
T 127  
 NORTH = 209918.56  
 EAST = 1577682.96  
 ELEV. = 553.80

GENERAL LOCATION, JAMAICA, VT. TO REACH FROM THE MOST SOUTHERLY INTERSECTION OF VT ROUTES 100 AND 30 IN EAST JAMAICA GO WEST ALONG VT ROUTE 100 AND 30 FOR ABOUT 65 M (213.3 FT) TO THE INTERSECTION OF A GRAVEL ROAD RIGHT AND THE MARK ON THE RIGHT IN THE SOUTHWEST CORNER OF THE STEPHEN BALLANTINE MEMORIAL ATHLETIC FIELD COMPLEX. THE MARK IS SET FLUSH WITH GROUND SURFACE IN THE TOP OF A CAST ALUMINUM MONUMENT. IT IS 10.7 M (35.1 FT) NORTH OF AND ABOUT 2 M (6.6 FT) LOWER THAN THE NORTH EDGE OF PAVEMENT OF VT ROUTE 100 AND 30, 9.5 M (31.2 FT) EAST OF THE CENTERLINE OF THE GRAVEL ROAD, 18.2 M (59.7 FT) NORTHWEST OF POLE NO. 599/5/505, AND 0.1 SOUTH OF A FIBERGLASS WITNESS POST.

TRAVERSE TIES

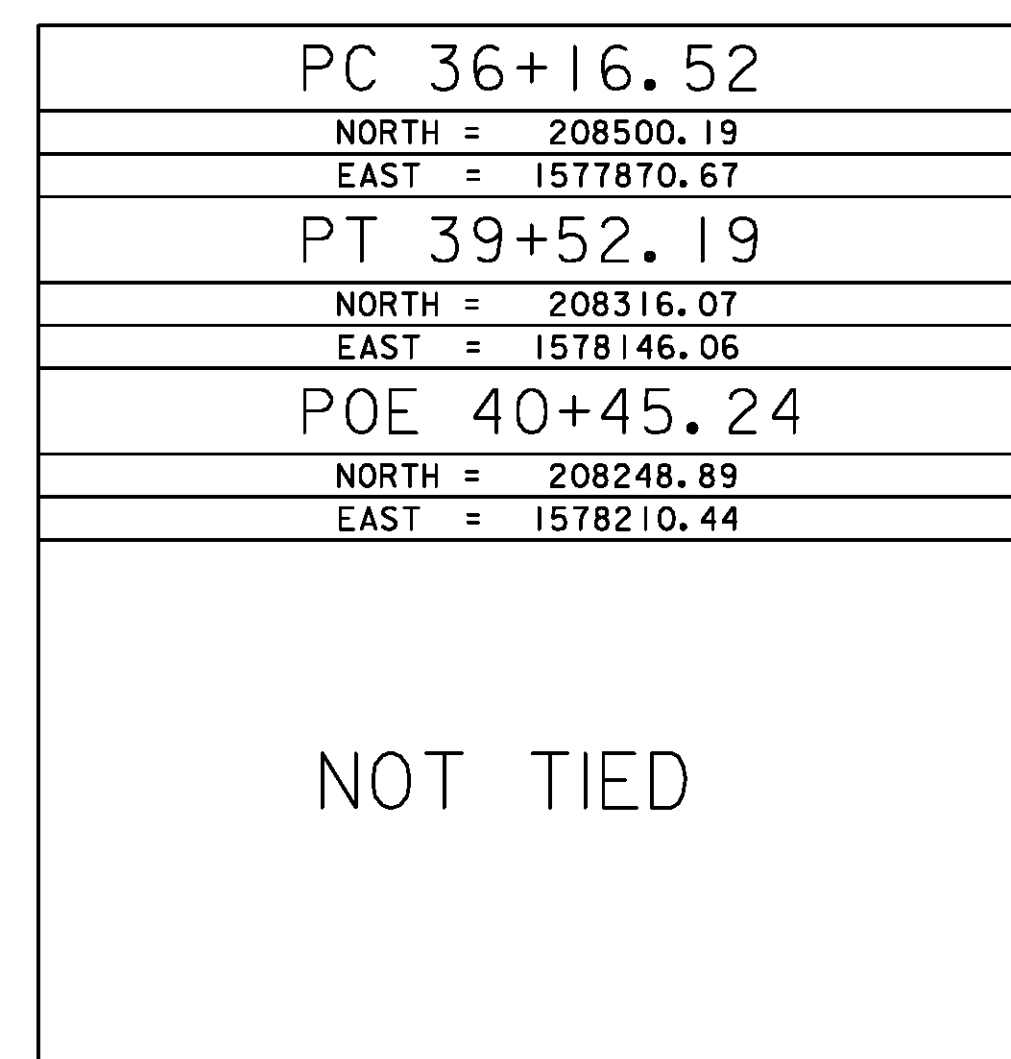
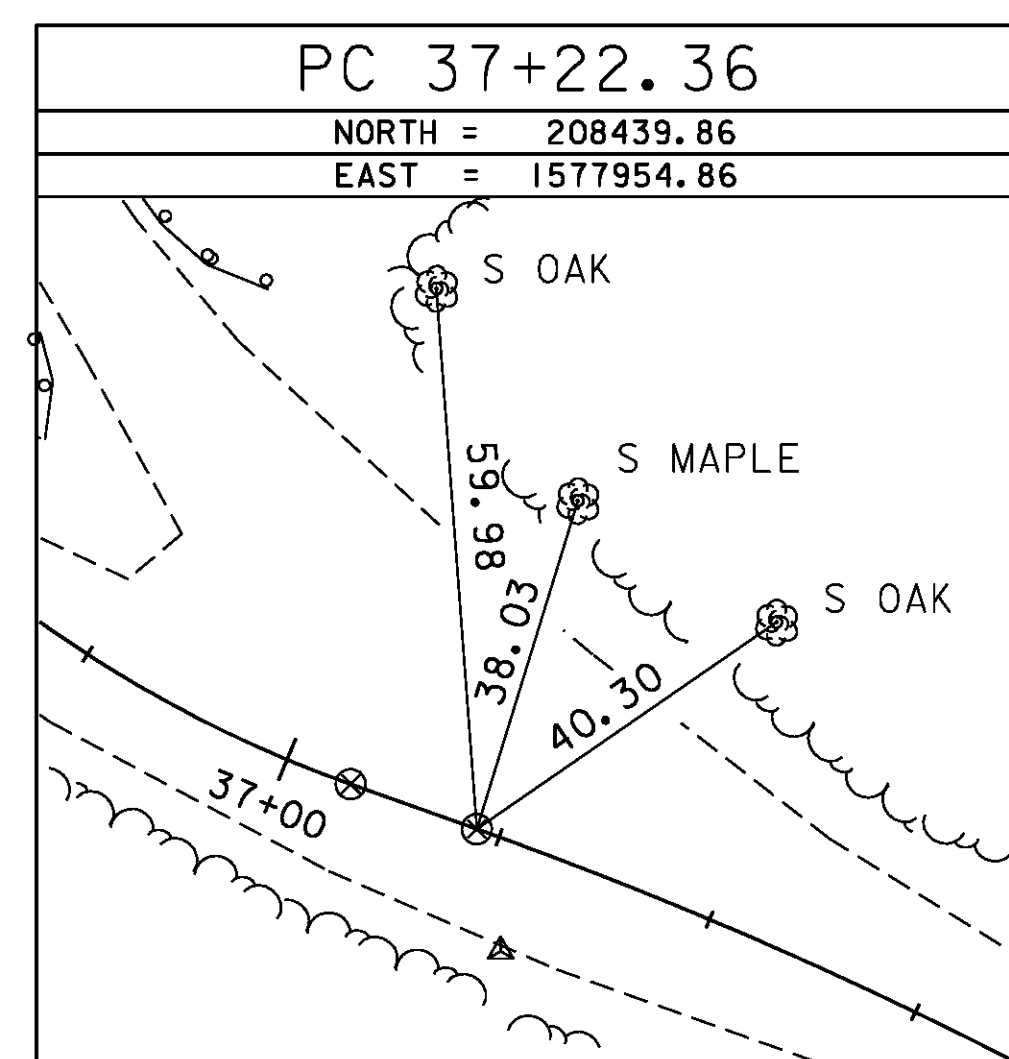
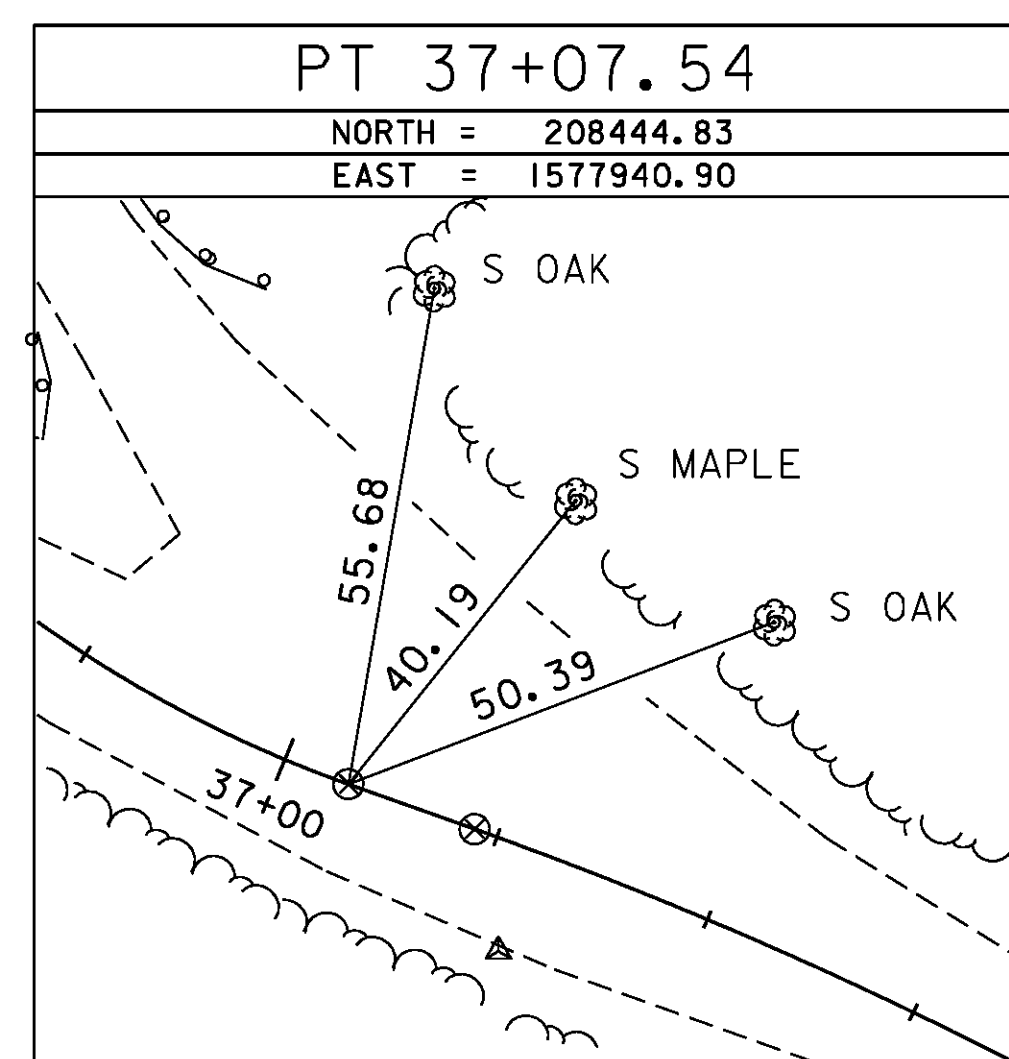
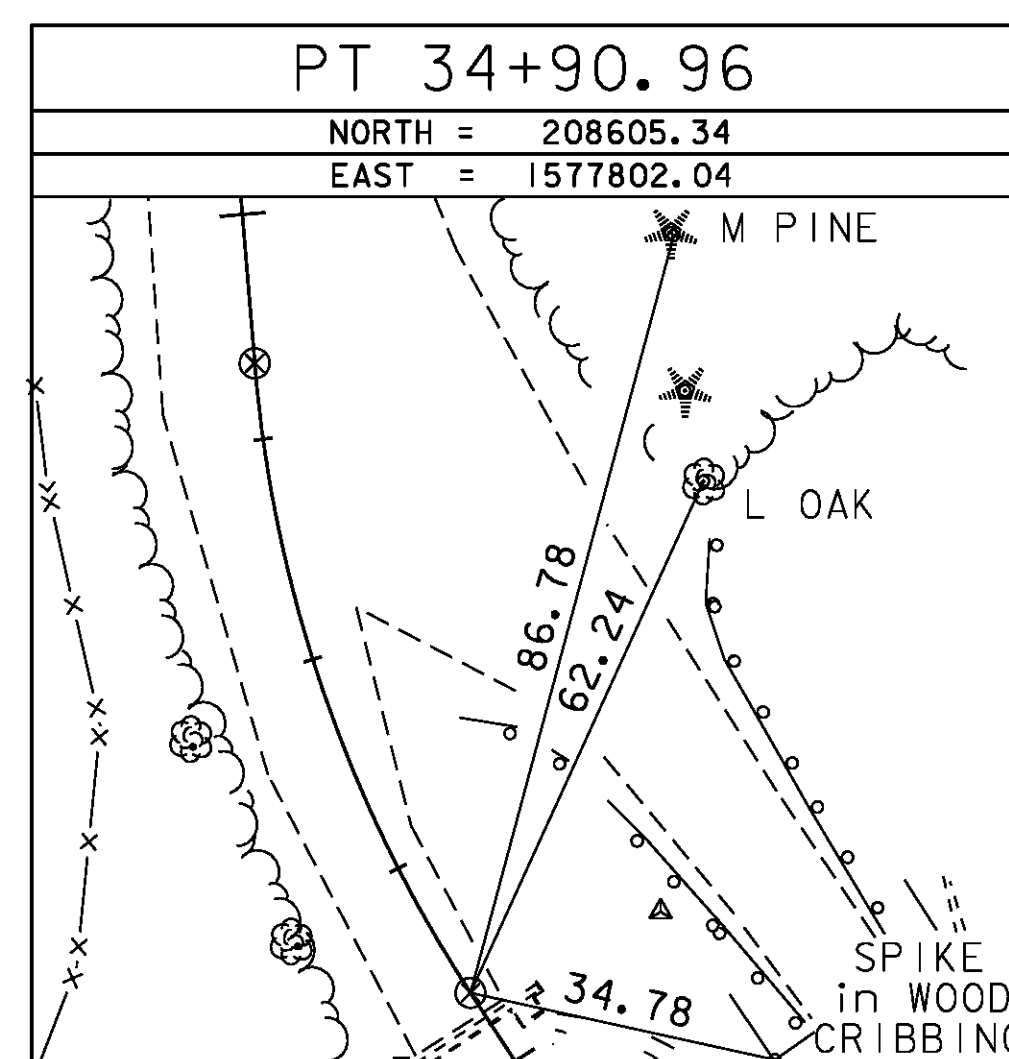
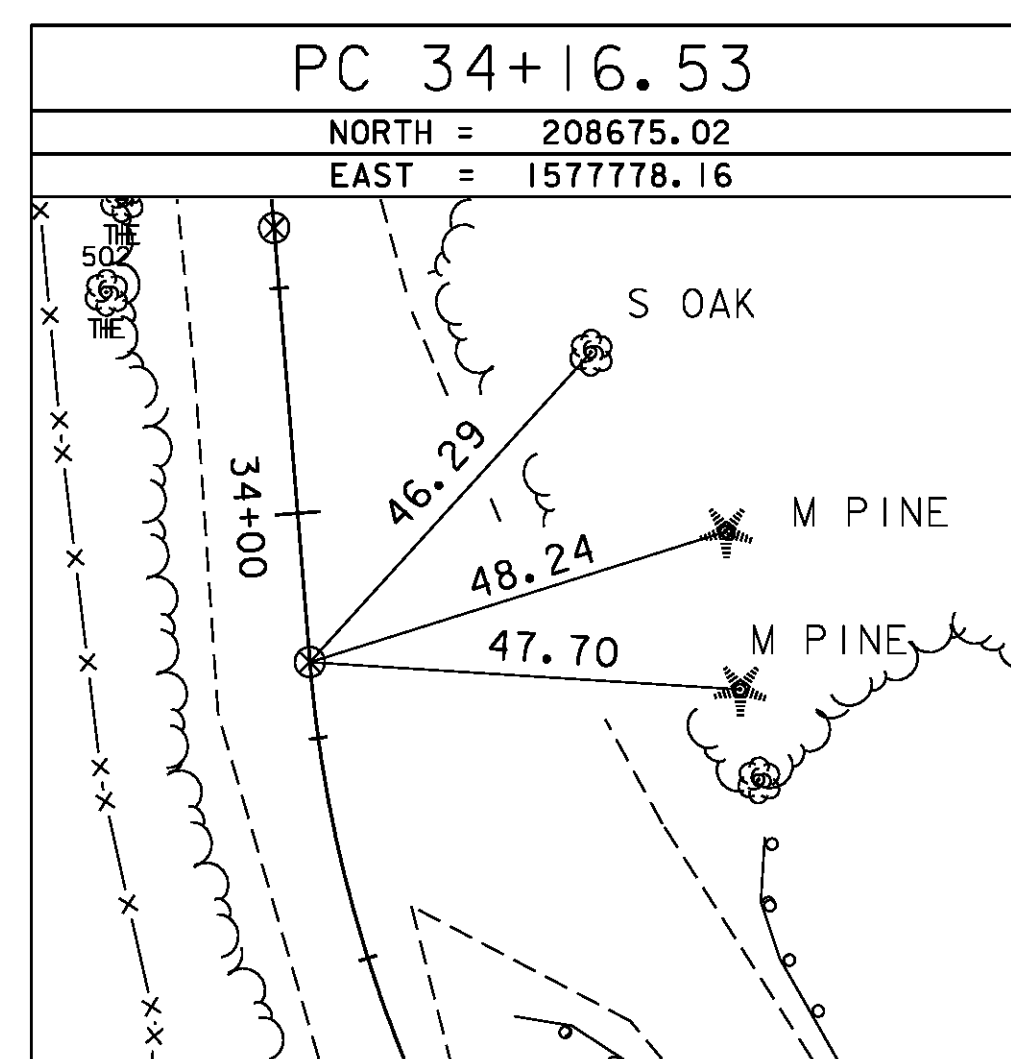


ALIGNMENT TIES



\* Main Traverse Completed 04/21/98 by R. Gilman P.C. & T. Companion

ALIGNMENT TIES



\* Alignment Staked 3/22/07 by R. Gilman P.C. & R. Bullock & P. Winters

DATUM	
VERTICAL	NAVD 88
HORIZONTAL	NAD 83 (92)
ADJUSTMENT	COMPASS

PROJECT NAME:	Jamaica
PROJECT NUMBER:	BRO 1442 (27)
FILE NAME:	96J068\survey\96J068+1.dgn
PROJECT LEADER:	K. HIGGINS
DESIGNED BY:	SURVEY
TIE SHEET	
PLOT DATE:	19-OCT-2009
DRAWN BY:	R. bullock
CHECKED BY:	SURVEY
SHEET	7 OF 44