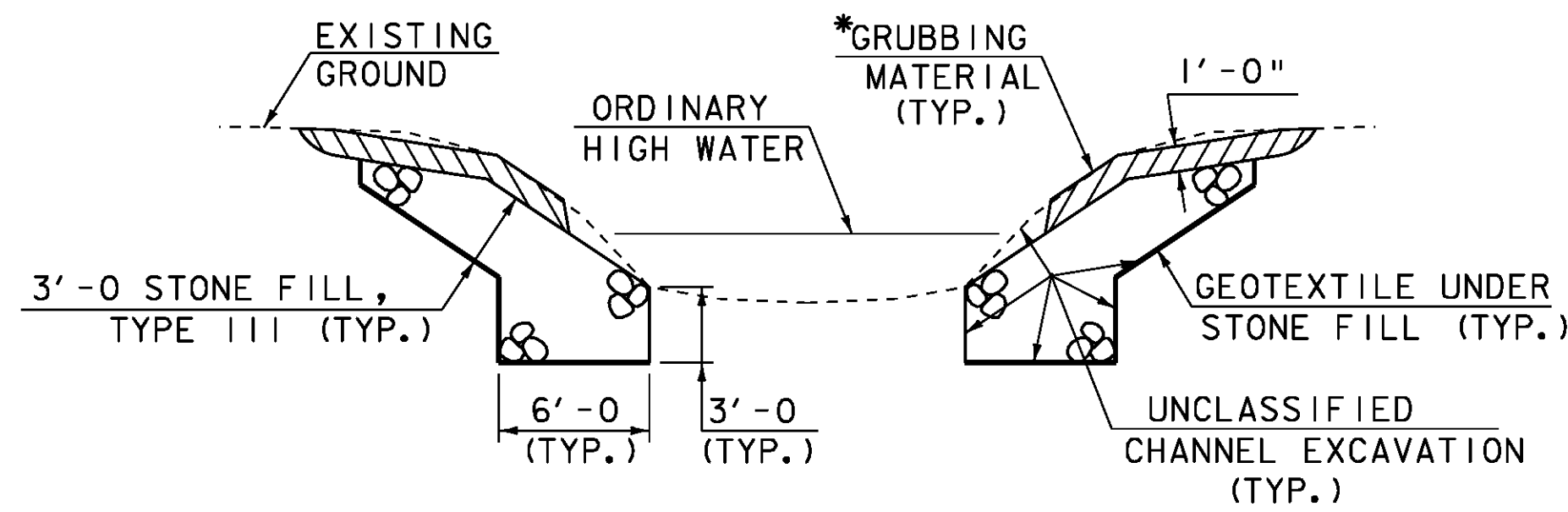


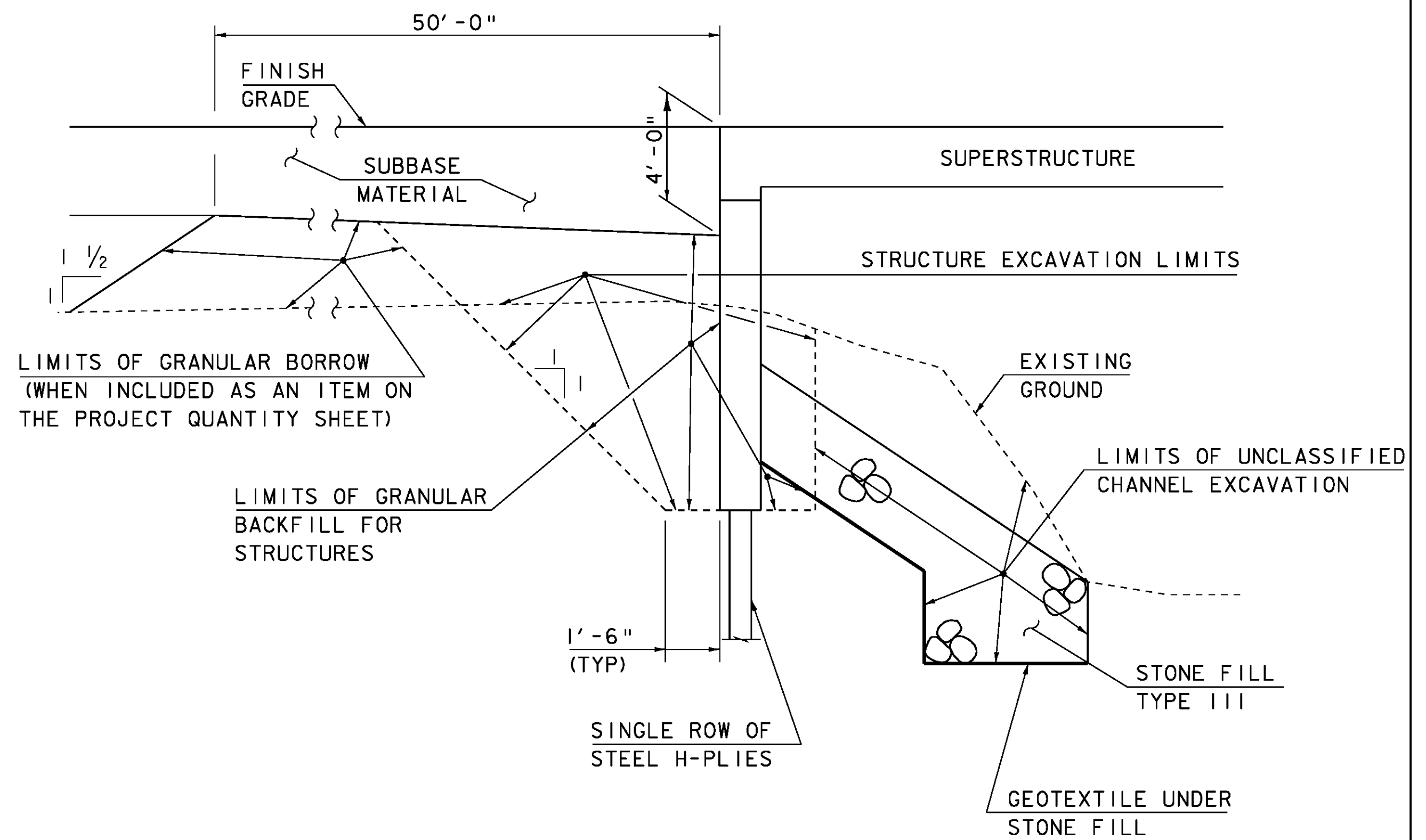
MATERIAL ITEM	TOLERANCE
AGGREGATE SURFACE COURSE	± 1/2"
SUBBASE	± 1"



TYPICAL CHANNEL SECTION

(NOT TO SCALE)

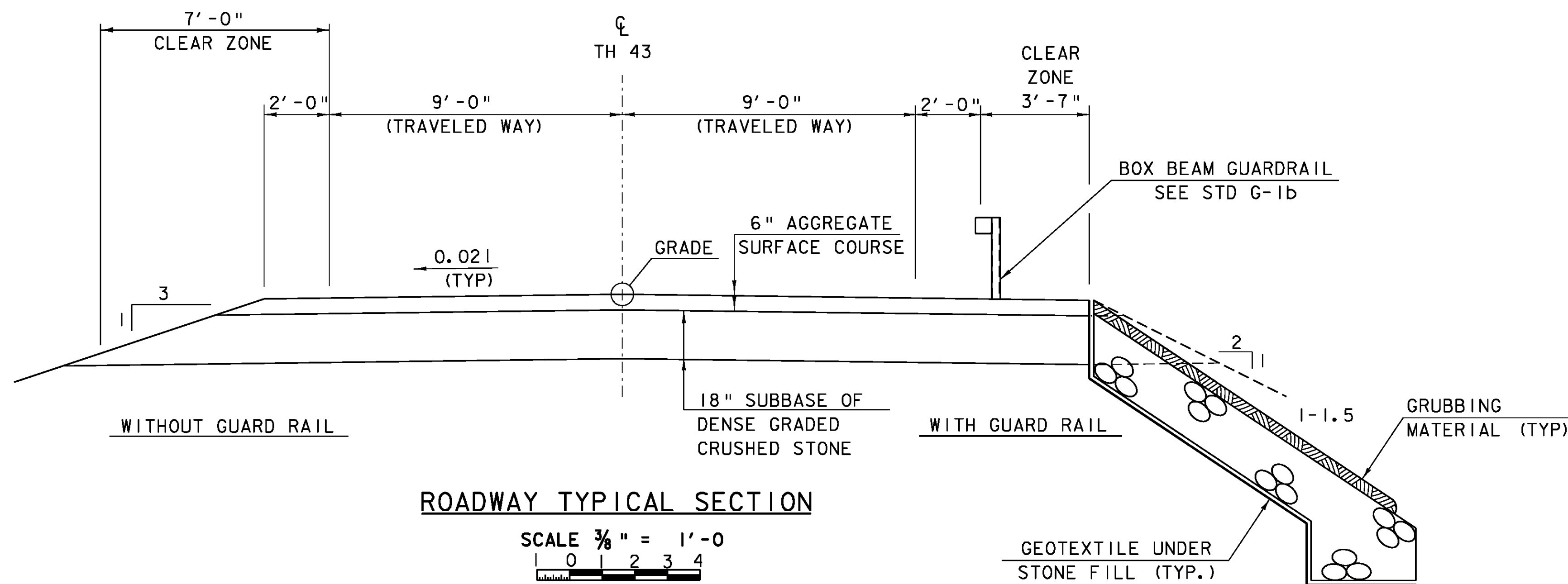
* GRUBBING MATERIAL SHALL NOT BE PLACED ON THE STONE FILL IN THE AREA UNDER THE BRIDGE. WHENEVER CHANNEL SLOPE INTERSECTS ROADWAY SUBBASE, GRUBBING MATERIAL SHALL BEGIN AT THE BOTTOM OF SUBBASE.



TYPICAL INTEGRAL ABUTMENT SECTION

(NOT TO SCALE)

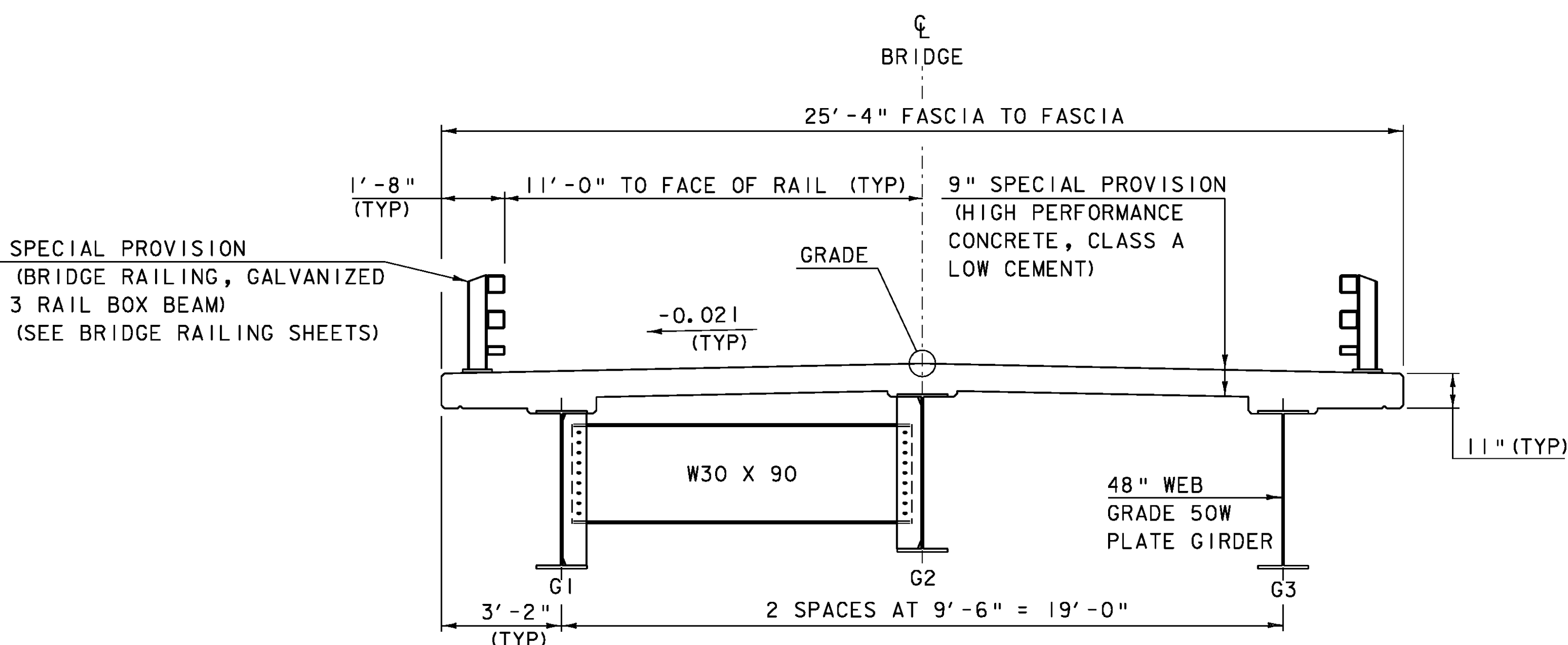
ACTUAL LIMITS OF STRUCTURE EXCAVATION SHALL BE DETERMINED BY THE CONTRACTOR. HOWEVER, ONLY THE EXCAVATION BETWEEN THE LIMITS SHOWN WILL BE PAID FOR UNDER ITEM 204.25 "STRUCTURE EXCAVATION". EXCAVATION BY THE CONTRACTOR OUTSIDE OF THESE LIMITS WILL BE AT THE EXPENSE OF THE CONTRACTOR.



ROADWAY TYPICAL SECTION

SCALE 3/8" = 1'-0"
 0 1 2 3 4

NOTE:
 ALL SLOPES STEEPER THAN 1-2 SHALL HAVE A 2' BLANKET OF STONE FILL, TYPE II. THE STONE FILL BLANKET SHALL BE COVERED WITH A 1' LAYER OF GRUBBING MATERIAL, FERTILIZED, LIMESTONED, SEEDED AND MULCHED.



BRIDGE TYPICAL SECTION

SCALE 3/8" = 1'-0"
 0 1 2 3 4

PROJECT NAME: JAMAICA	PLOT DATE: 19-OCT-2009
PROJECT NUMBER: BRO 1442(27)	DRAWN BY: R. PELLETT
FILE NAME: s961068typ.dgn	CHECKED BY: J. LACROIX
PROJECT LEADER: K. HIGGINS	SHEET 4 OF 44
DESIGNED BY: J. LACROIX	
TYPICAL SECTIONS	