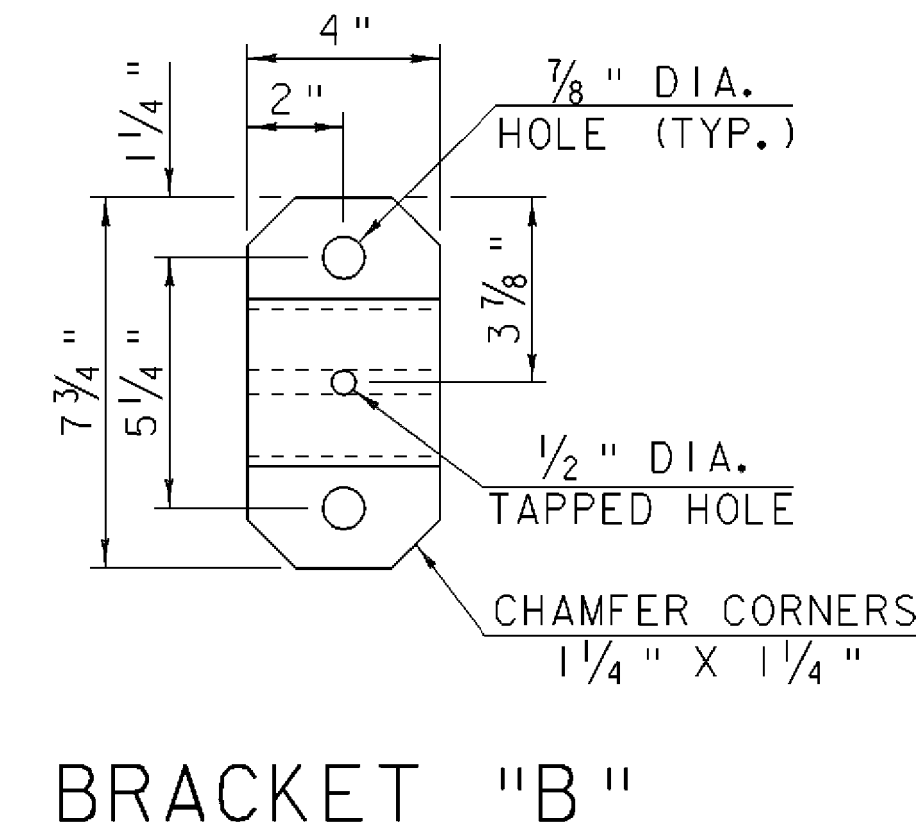
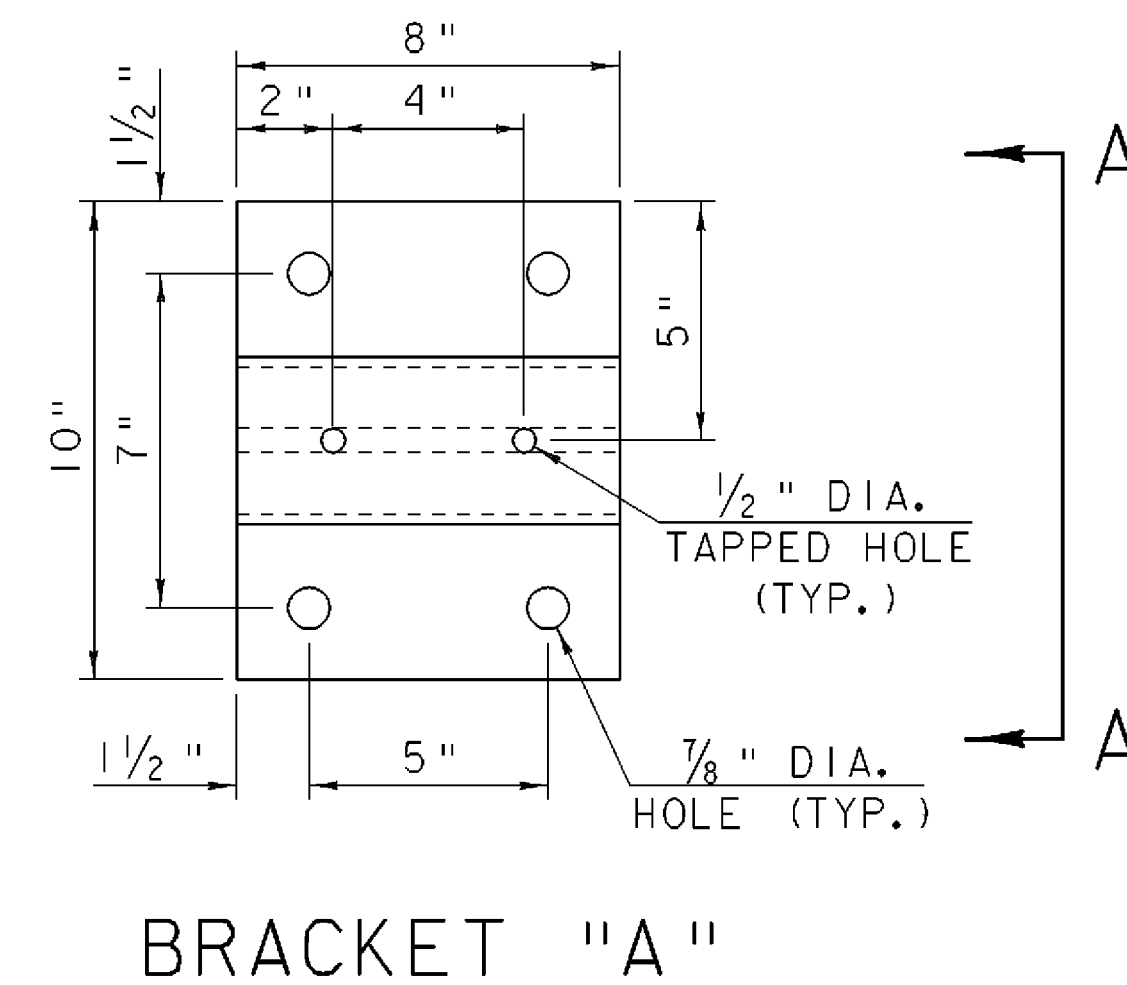
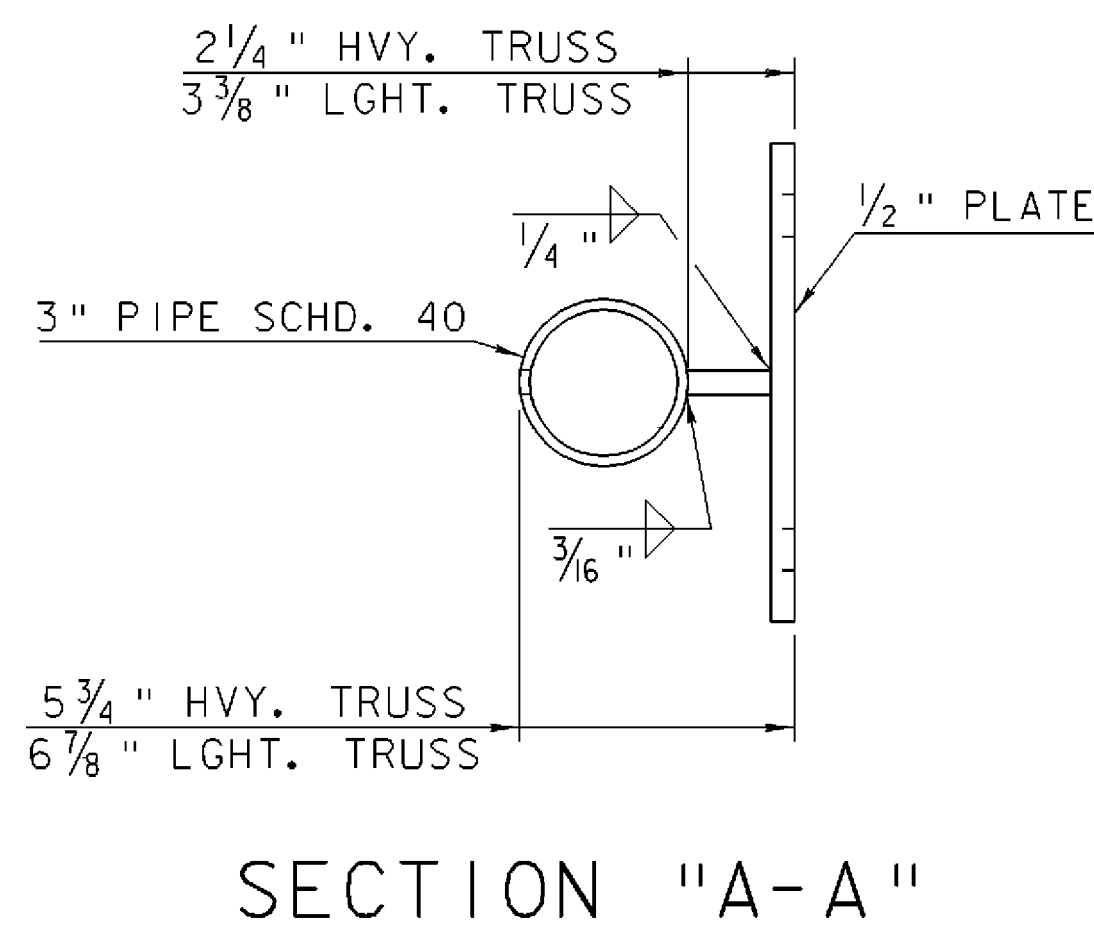
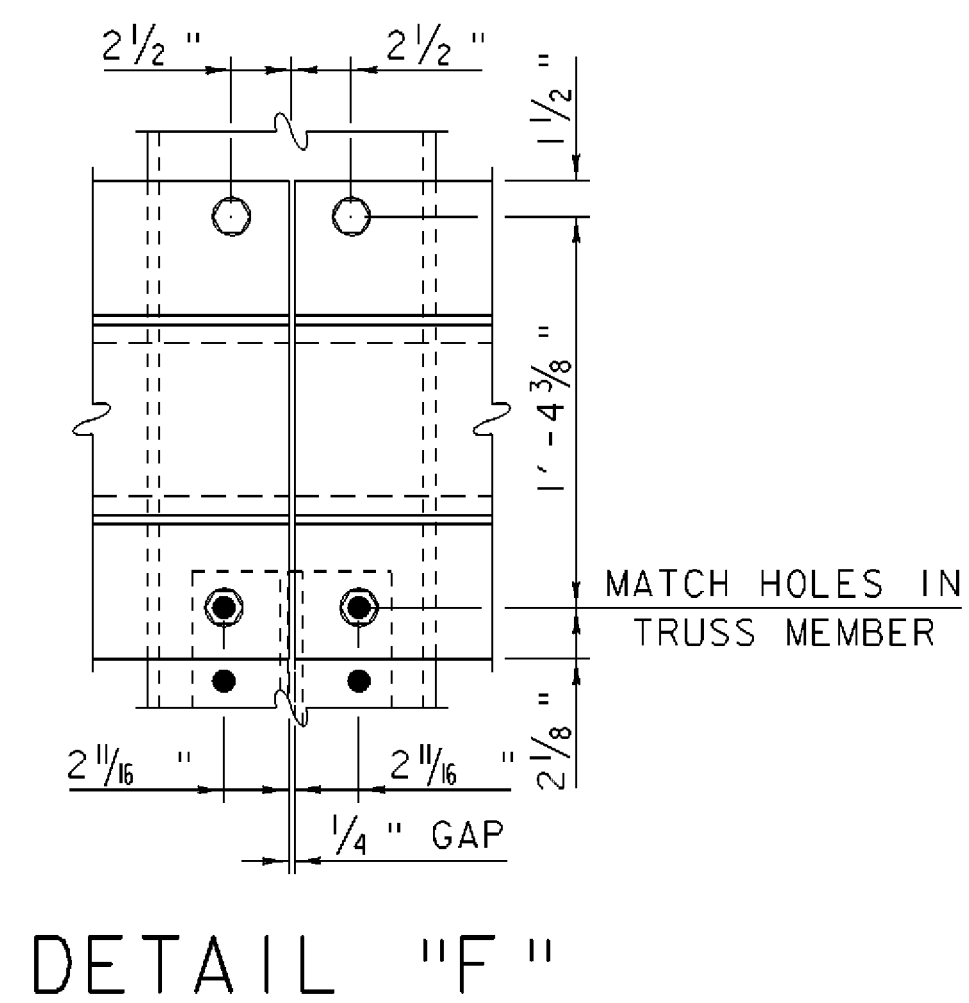
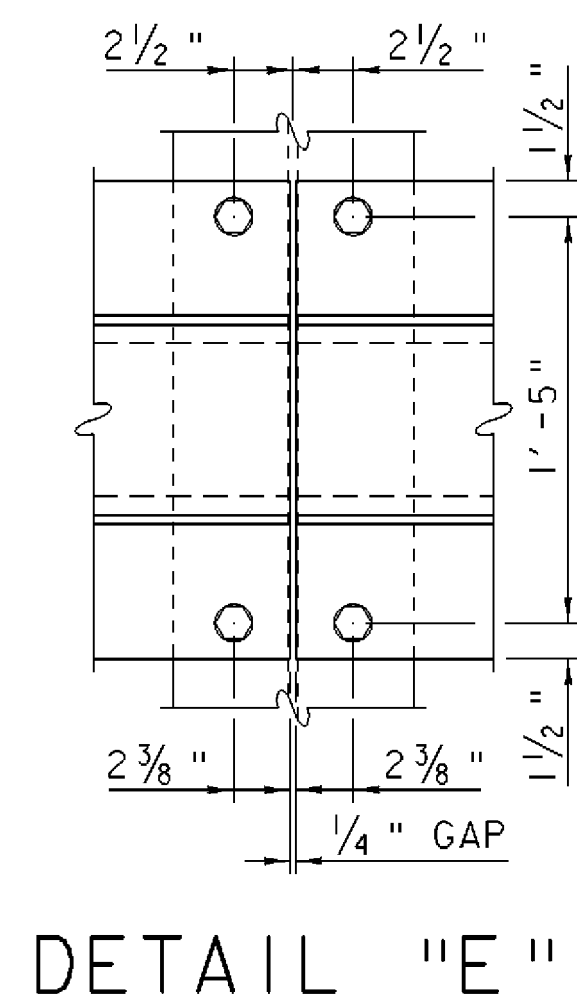
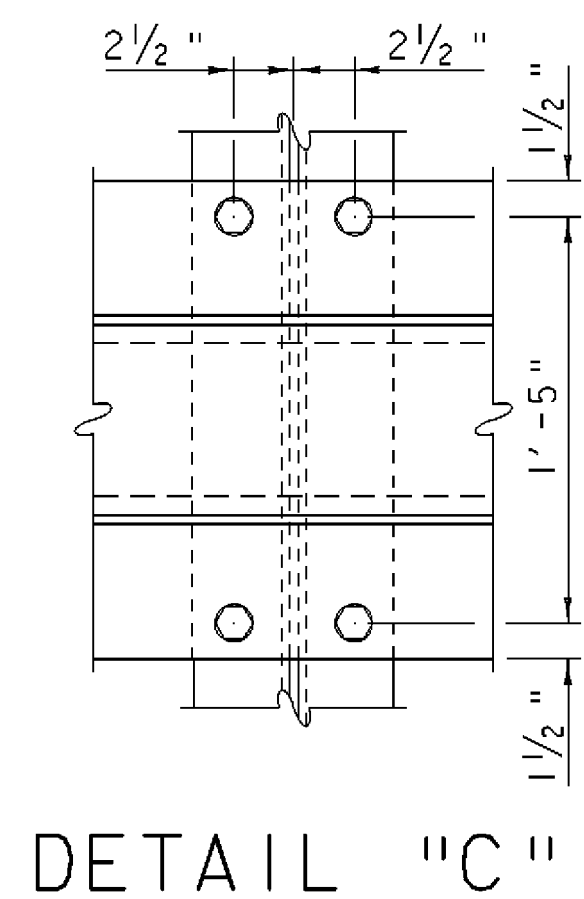
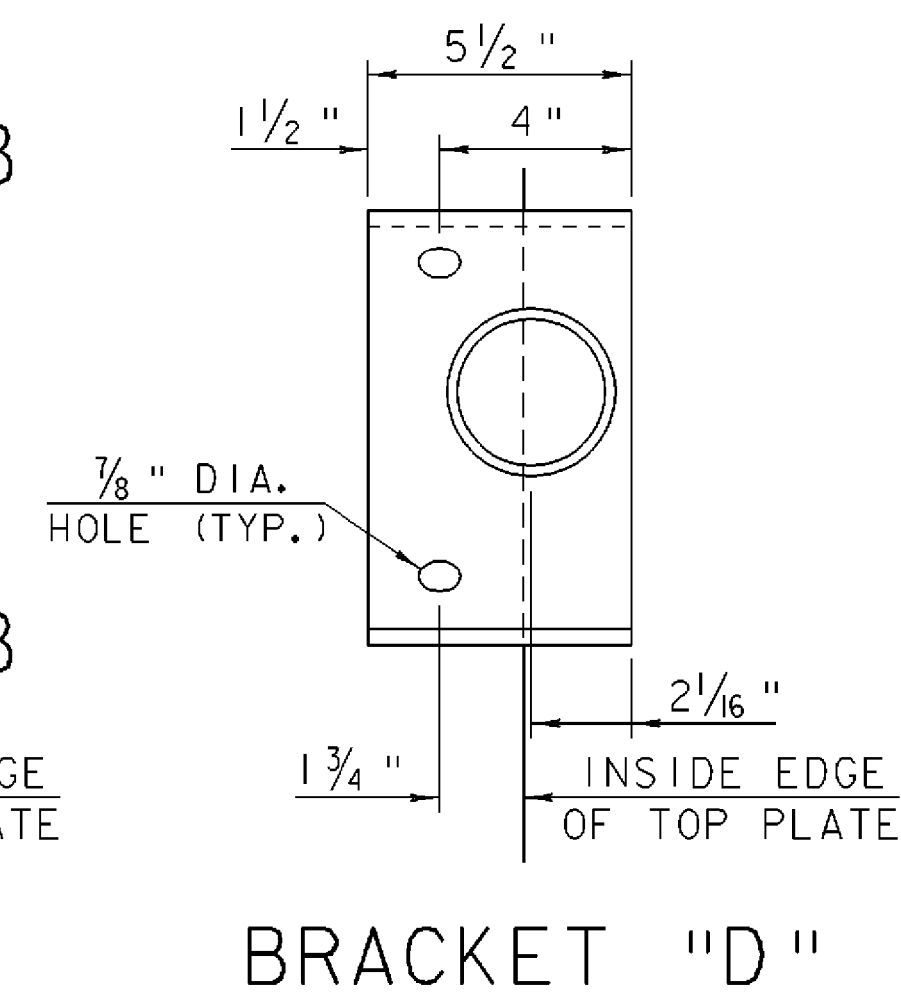
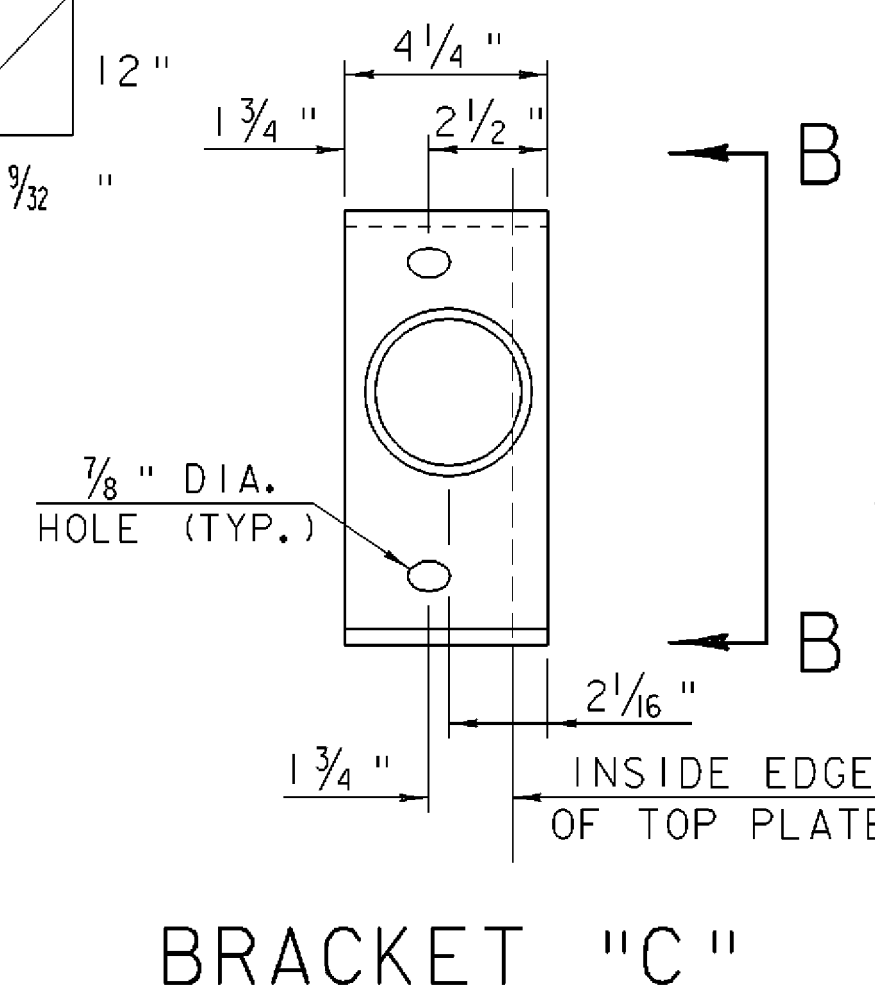
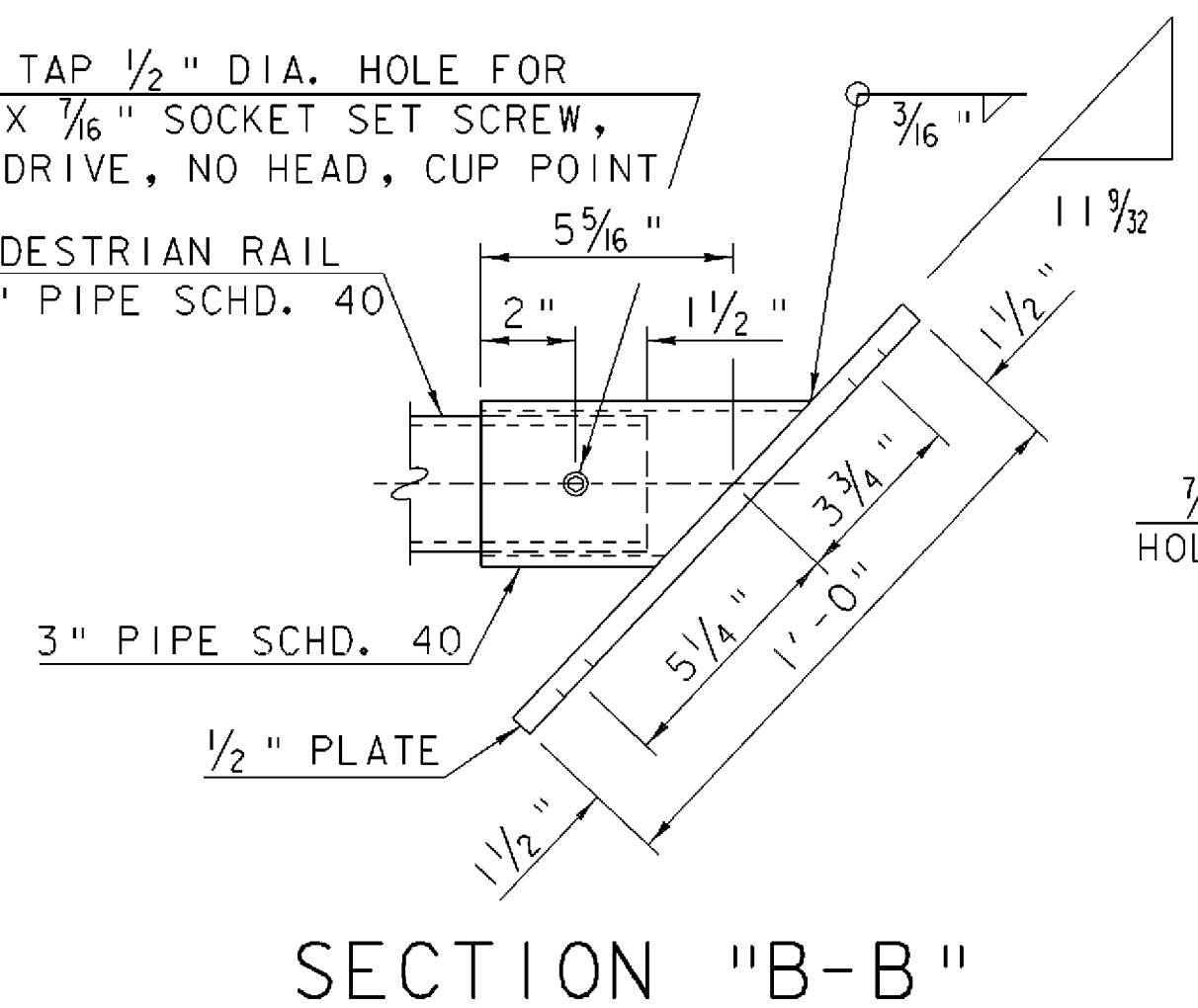
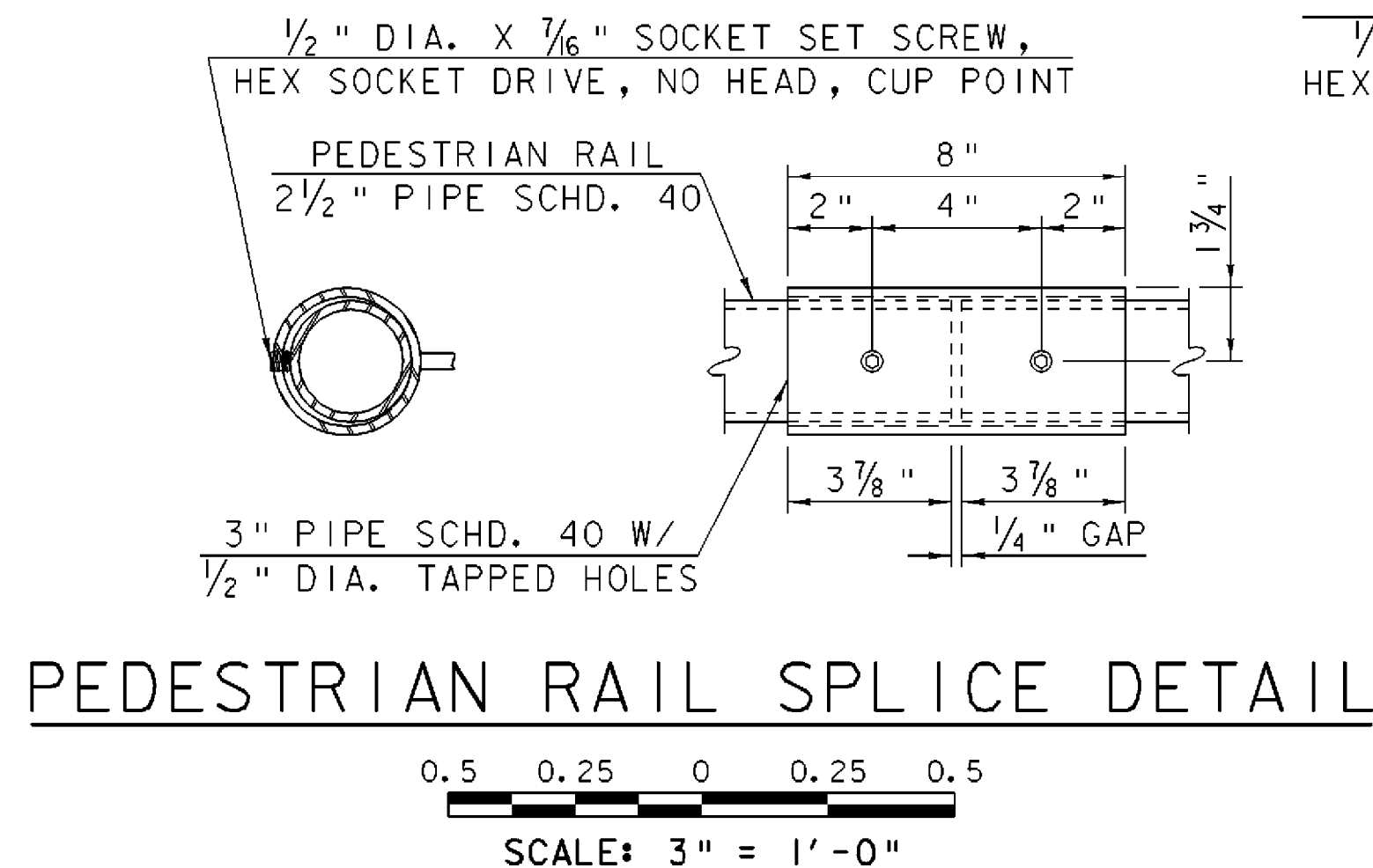
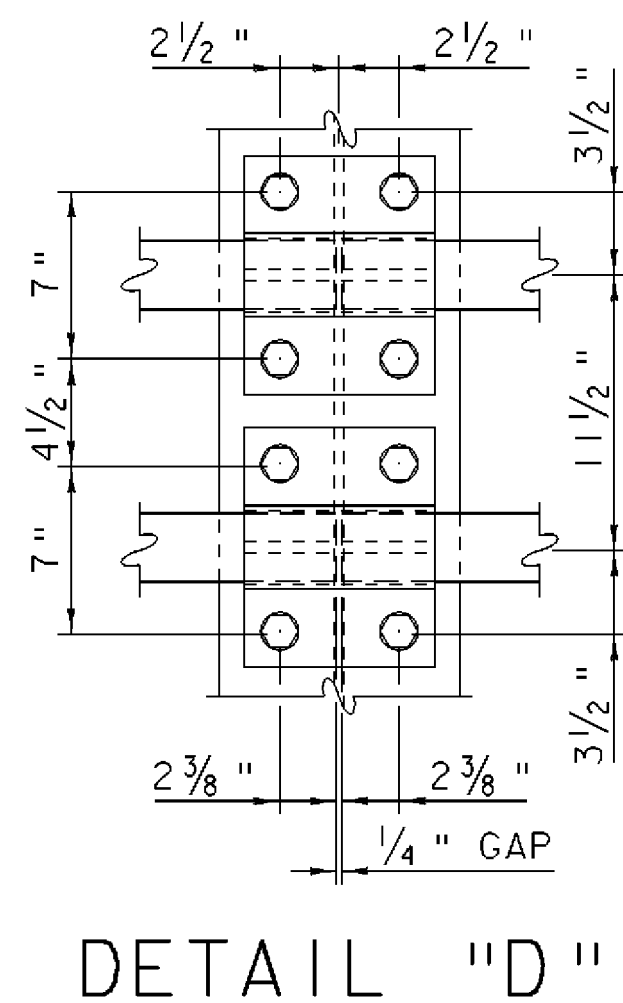
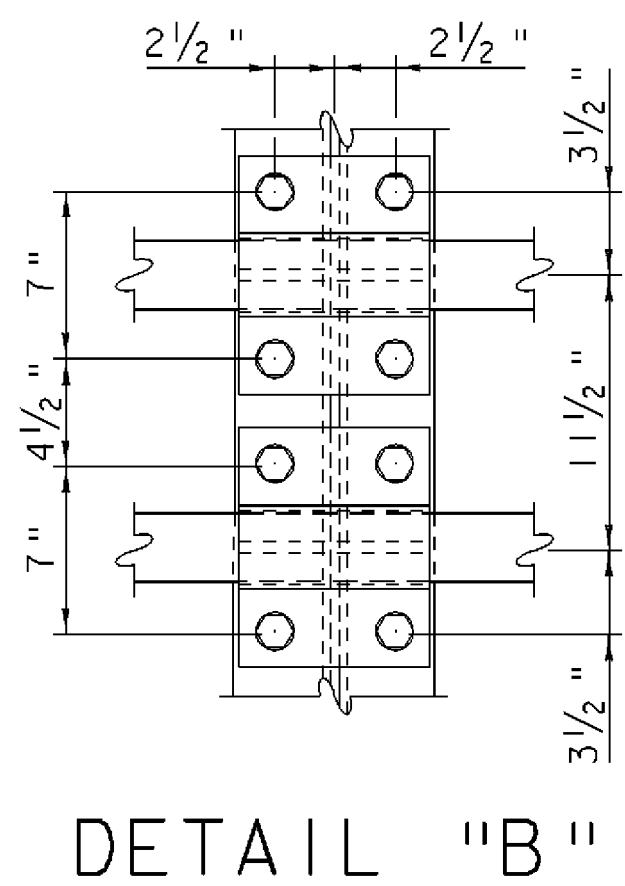
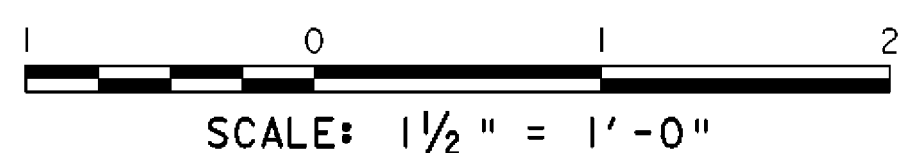


NOTES

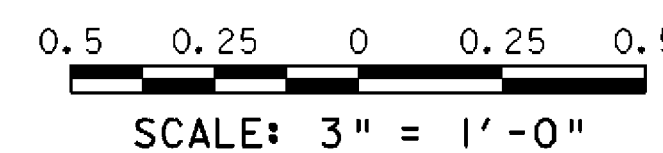
1. TRUSS RAILING SHALL BE FURNISHED IN EQUAL LENGTH SEGMENTS NOT TO EXCEED FIVE SEGMENTS PER TRUSS LINE.
2. TRUSS VEHICULAR RAIL, PEDESTRIAN RAIL AND BRACKETS SHALL BE PAID FOR AS ITEM 506.60, "STRUCTURAL STEEL".
3. ALL RAIL COMPONENTS SHALL BE FABRICATED FROM AASHTO M 270M/M 270 GRADE 36 STRUCTURAL STEEL.
4. TRUSS RAILING SHALL BE PAINTED **BLACK GREEN** PER ITEM 513.25, "STRUCTURAL PAINTING, SHOP APPLIED."
5. MOUNTING BRACKETS SHALL BE MADE FROM 3" PIPE SCHD. 40 AND 1/2" PLATE.



TRUSS RAILING ATTACHMENT DETAILS



MOUNTING BRACKET DETAILS



TRUSS RAILING DETAILS (2)

| | | | |
|-----------------|----------------------------|-------------|-------------|
| PROJECT NAME: | SPRINGFIELD | PLOT DATE: | 27-DEC-2007 |
| PROJECT NUMBER: | BHO 1442(30) | DRAWN BY: | L. BULLOCK |
| FILE NAME: | 96J348/str/s96J348rail.dgn | CHECKED BY: | C. CARLSON |
| PROJECT LEADER: | R. WHITCOMB | SHEET | 37D OF 85 |
| DESIGNED BY: | C. CARLSON | | |