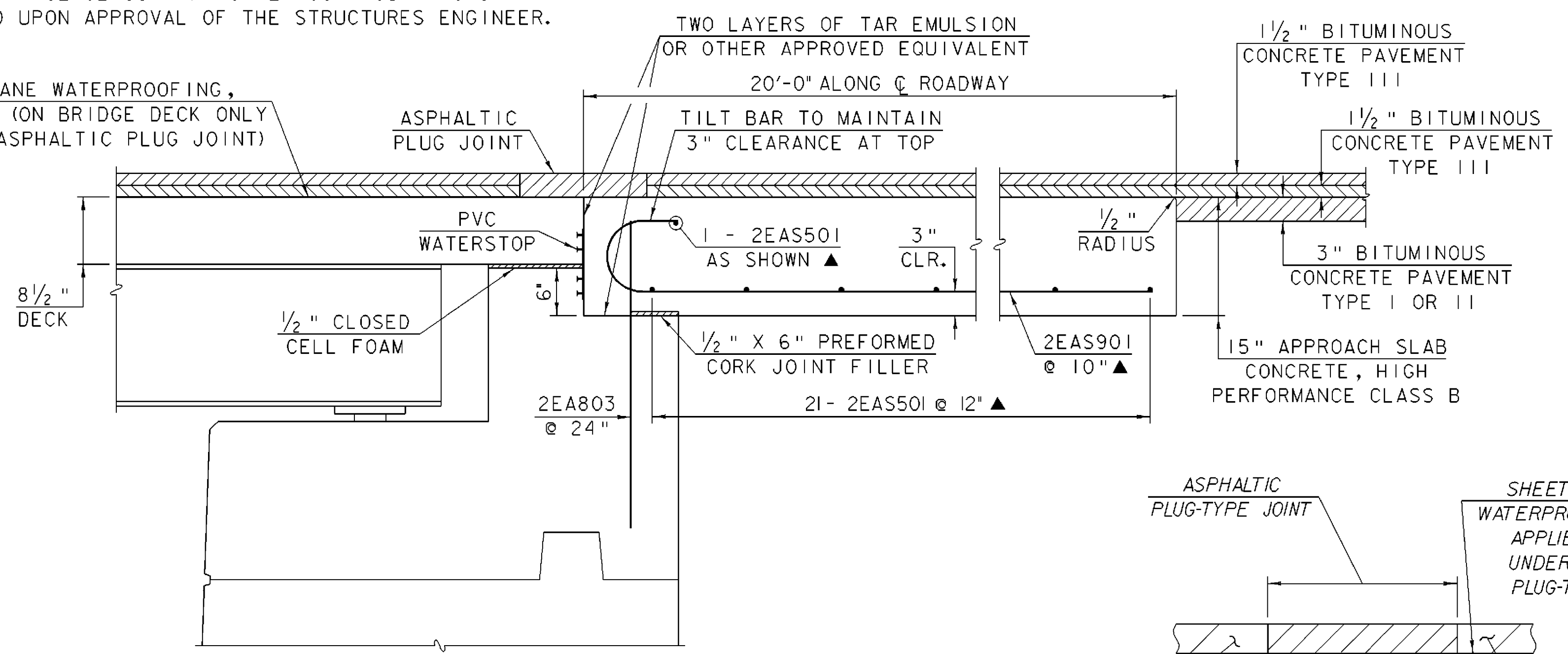
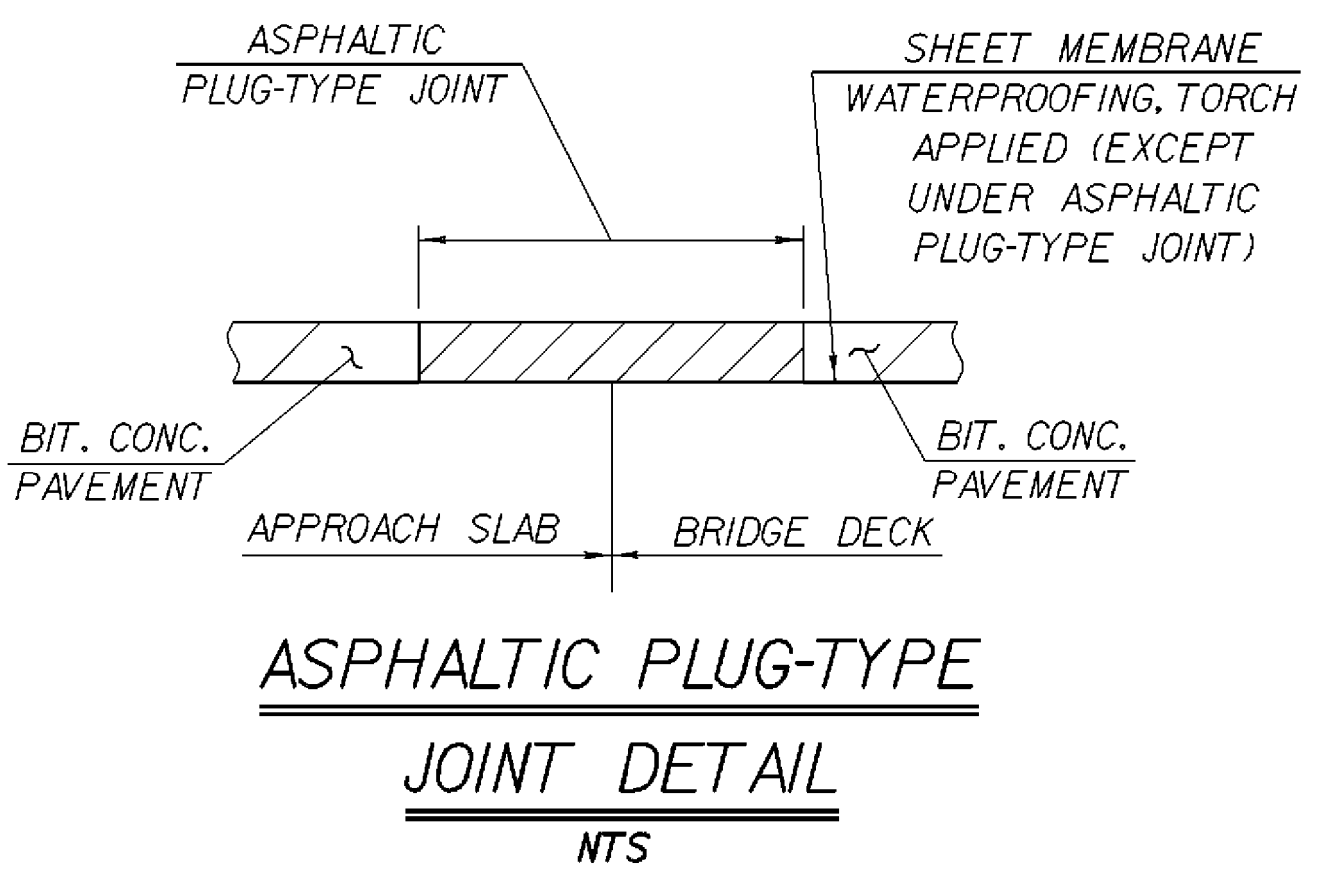


THE COSTS FOR PVC WATERSTOP SHALL BE INCLUDED IN THE UNIT BID PRICE FOR ITEM 501.33, "CONCRETE, HIGH PERFORMANCE CLASS A". OTHER CONFIGURATIONS MAY BE USED UPON APPROVAL OF THE STRUCTURES ENGINEER.

SHEET MEMBRANE WATERPROOFING, TORCH APPLIED (ON BRIDGE DECK ONLY EXCEPT UNDER ASPHALTIC PLUG JOINT)



APPROACH SLAB NO. 2 DETAIL
SCALE: 1" = 1'-0"
(APPROACH NO. 1 SIMILAR EXCEPT NO ASPHALTIC PLUG JOINT)



ASPHALTIC PLUG-TYPE JOINT DETAIL
NTS

ASHPALTIC PLUG BRIDGE JOINT NOTES:

1. INSTALLATION
 - A. THE JOINT SHALL BE LOCATED CENTRALLY OVER THE DECK AND FIXED JOINT MARKED OUT TO THE MANUFACTURER'S RECOMMENDED WIDTH.
 - B. THE JOINT SHALL BE EXCAVATED AS SHOWN ON THE PLANS BY USE OF SAWS AND PNEUMATIC HAMMER OR A HAMMER AND CHISEL.
 - C. THE JOINT AREA SHALL BE BLAST CLEANED OF DEBRIS AND ASPHALT. THE JOINT AREA SHALL BE THOROUGHLY DRIED USING HOT COMPRESSED AIR PRIOR TO APPLYING BINDER MATERIAL.
 - D. SPALLED AND DEFECTIVE CONCRETE SHALL BE REPAIRED WITH AN APPROVED MATERIAL AS AGREED UPON BY THE ENGINEER.
 - E. THE BINDER MATERIAL SHALL BE HEATED AND PLACED AS RECOMMENDED BY THE MANUFACTURER.
 - F. THE BINDER MATERIAL AND AGGREGATE SHALL BE HEATED AND MIXED AS RECOMMENDED BY THE MANUFACTURER.
 - G. THE INSTALLATION OF MATERIAL, COMPACTION, AND TOP COATING SHALL BE AS RECOMMENDED BY THE MANUFACTURER.
 - H. IMMEDIATELY AFTER TOP COATING, AN ANTI-SKID MATERIAL SHALL BE CAST OVER THE JOINT TO REDUCE THE RISK OF TRACKING.
 - I. JOINT SHALL BE PROTECTED FROM TRAFFIC UNTIL THE MATERIAL HAS COOLED TO 125 DEG. F +/-.
2. WEATHER LIMITATIONS. BINDER MATERIAL SHALL BE APPLIED ONLY WHEN THE FOLLOWING CONDITIONS PREVAIL:
 - A. THE AMBIENT AIR TEMPERATURE IS AT LEAST 50 DEG F AND RISING.
 - B. THE ROAD SURFACE IS SUFFICIENTLY DRY.
 - C. WEATHER CONDITIONS OR OTHER CONDITIONS ARE FAVORABLE AND ARE EXPECTED TO REMAIN SO FOR THE PERFORMANCE OF SATISFACTORY WORK.

APPROACH SLAB DETAILS

PROJECT NAME:	SPRINGFIELD	PLOT DATE:	27-DEC-2007
PROJECT NUMBER:	BHO 1442(30)	DRAWN BY:	J. PERRIGO
FILE NAME:	96j348/str/s96j348sup.dgn	CHECKED BY:	C. CARLSON
PROJECT MANAGER:	R. R. WHITCOMB	SHEET	36 OF 85
DESIGNED BY:	J. PERRIGO		