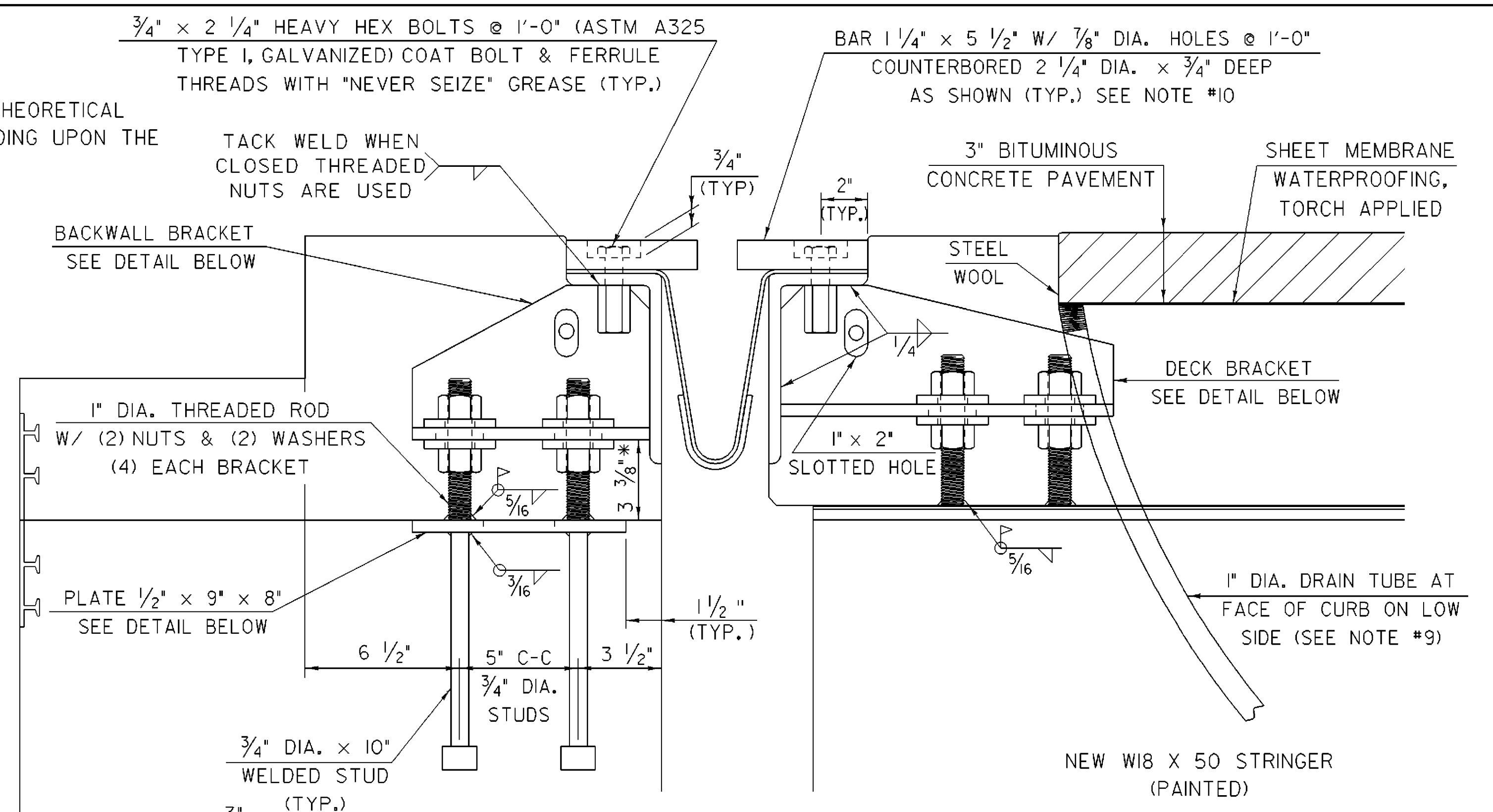


TEMP	"A" DIST	"B" DIST
0	1 5/8"	1 1/4"
15	1 1/2"	1 1/8"
30	1 3/8"	1"
45	1 1/4"	7/8"
60	1 1/8"	3/4"
75	1"	5/8"
90	7/8"	1/2"

"A" IS THE SETTING BEFORE DEAD LOADS (DECK, PAVEMENT, ETC.) ARE IN PLACE.
 "B" IS THE SETTING AFTER THE DEAD LOADS ARE IN PLACE.



WASHER FOR BRACKET SCALE: 3" = 1'-0"

TYPICAL SECTION AT BRACKETS SCALE: 3" = 1'-0" (NORMAL TO C BEARING)

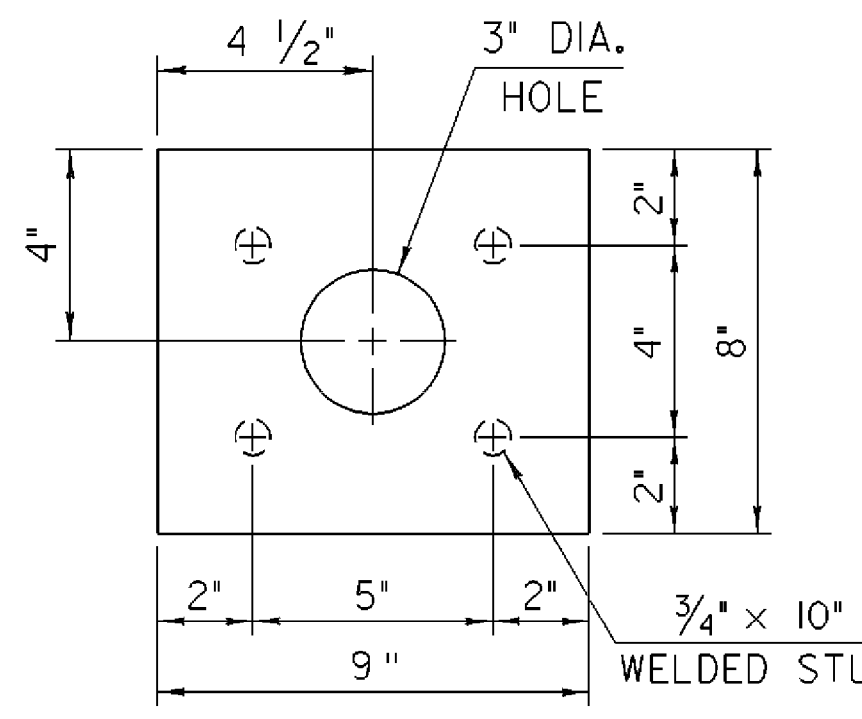


PLATE PLAN SCALE: 3" = 1'-0"

TYPICAL SECTION BETWEEN BRACKETS SCALE: 3" = 1'-0" (NORMAL TO C BEARING)

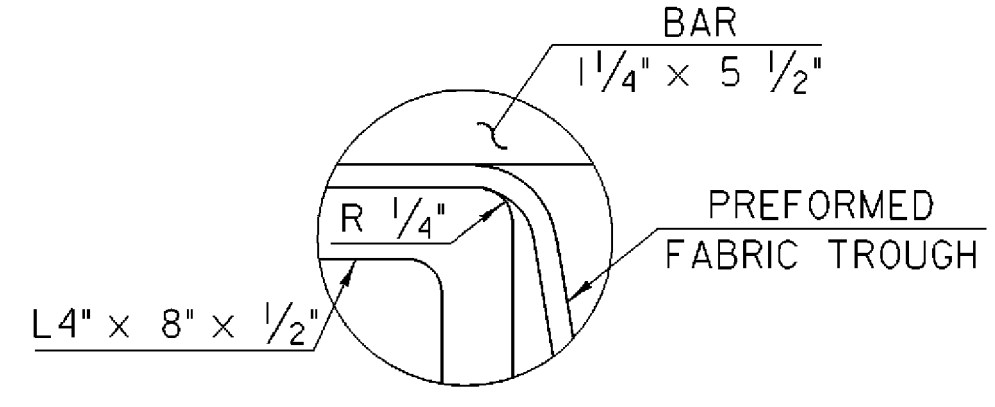
EXPANSION JOINT NOTES

1. DETAILS ON THIS SHEET ARE FOR ITEM 516.11 BRIDGE EXPANSION JOINT, VERMONT.
2. PREFORMED FABRIC MATERIAL SHALL BE CONTINUOUS AND SHALL CONFORM TO SUBSECTION 707.07.
3. BUTYL RUBBER TAPE SHALL CONFORM TO SUBSECTION 707.12.
4. THE FINAL FINISH OF THE EXPANSION DEVICE SHALL BE COVERED DURING THE PLACING OF BRIDGE DECK.
5. ALL STEEL COMPONENTS SHALL BE AASHTO M 270M/M 270, GRADE 36 GALVANIZED OR METALIZED AS PER SUBSECTION 506.15 (a) OR (b) UNLESS OTHERWISE SPECIFIED.
6. THE ITEM "BRIDGE EXPANSION JOINT, VERMONT" SHALL INCLUDE THE FABRICATION AND ERECTION OF THE COMPLETE JOINT ASSEMBLY INCLUDING ALL STEEL PLATES, BRACKETS, ANGLES, WELDED STUDS OR RODS, PREFORMED FABRIC DRAIN TROUGH MATERIAL AND PLASTIC DRAIN TUBES, BUTYL RUBBER TAPE AND ANY OTHER MISCELLANEOUS MATERIAL NECESSARY TO INSTALL JOINT.
7. THE 4" X 8" X 1/2" ANGLES SHALL BE FURNISHED AS ONE CONTINUOUS PIECE. THE 1 1/4" X 5 1/2" BARS EACH SIDE OF THE JOINT SHALL BE PROVIDED IN TWO EQUAL LENGTHS.
8. COAT CONCRETE CONTACT SURFACES WITH EPOXY BONDING COMPOUND MEETING THE REQUIREMENTS OF SUBSECTION 719.02. PAYMENT SHALL BE INCLUDED IN THE UNIT PRICE BID FOR ITEM 516.11 BRIDGE EXPANSION JOINT, VERMONT.
9. A 1" DIAMETER PLASTIC DRAIN TUBE SHALL BE INSTALLED AS SHOWN AT THE FACE OF CURB. THE UPPER END IS TO BE PLUGGED WITH STEEL WOOL AND THE LOWER END IS TO EXTEND BELOW THE BOTTOM OF THE FLOOR BEAM. THE DRAIN TUBES SHALL BE FASTENED TO THE FLOOR BEAM USING A METHOD APPROVED BY THE ENGINEER.
10. FILL COUNTERBORED HOLES WITH HOT POURED JOINT SEALER AFTER BOLT INSTALLATION. PAYMENT FOR THE WORK SHALL BE INCIDENTAL TO ITEM 516.11.

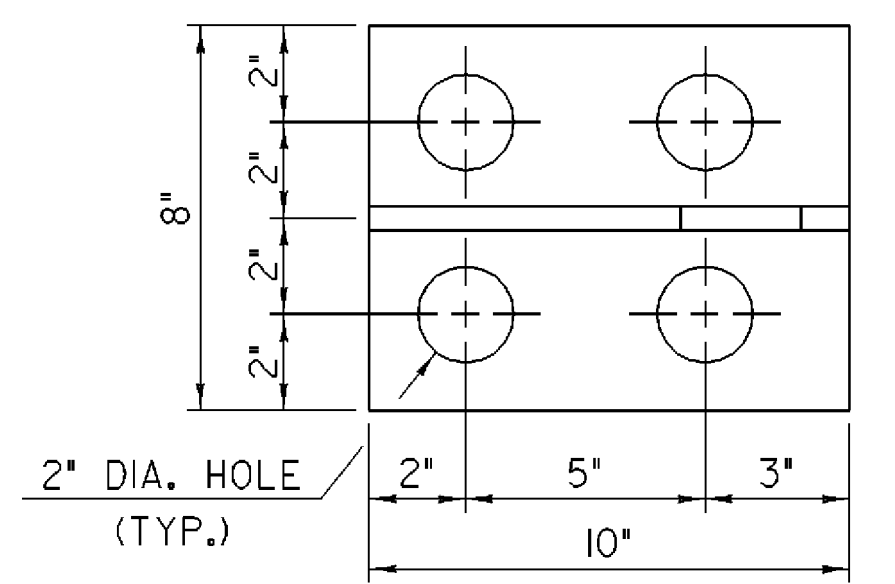
11. PAYMENT FOR WATERSTOP SHALL BE INCIDENTAL TO "CONCRETE, HIGH PERFORMANCE CLASS A". SEE SHEET 36 FOR WATERSTOP DETAILS.
12. A 1/4" DRIP BEAD OF PREFORMED MATERIAL SHALL BE CEMENTED TO THE BOTTOM OF THE FABRIC TROUGH USING AN ADHESIVE APPROVED BY THE MANUFACTURER. THE DRIP BEAD SHALL BE APPLIED 1" FROM THE EDGE OF THE CUT HOLE IN THE TROUGH.
13. FABRIC TROUGH SHALL BE THOROUGHLY CLEANED AND FLUSHED AFTER PAVING OPERATION.
14. THE EXPANSION JOINT SHALL BE SHOP ASSEMBLED AND SHIPPED AS ONE UNIT.
15. ALL BOLTS, STUDS AND RELATED HARDWARE EXCEPT AS NOTED SHALL CONFORM TO SUBSECTION 714.04 AND SHALL BE GALVANIZED IN ACCORDANCE WITH SUBSECTION 516.02

EXPANSION JOINT DETAILS

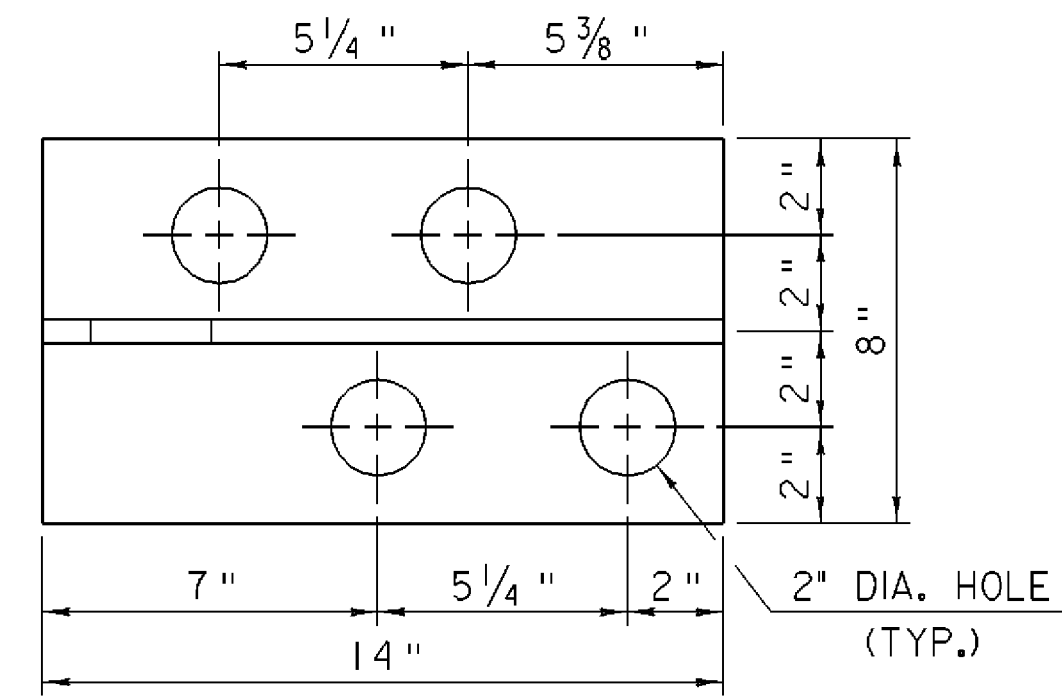
PROJECT NAME: SPRINGFIELD	PLOT DATE: 27-DEC-2007
PROJECT NUMBER: BHO 1442(30)	DRAWN BY: D. PETERSON
FILE NAME: 96j348/str/s96j348sup.dgn	CHECKED BY: C. CARLSON
PROJECT MANAGER: R. R. WHITCOMB	SHEET 34 OF 85
DESIGNED BY: J. PERRIGO	



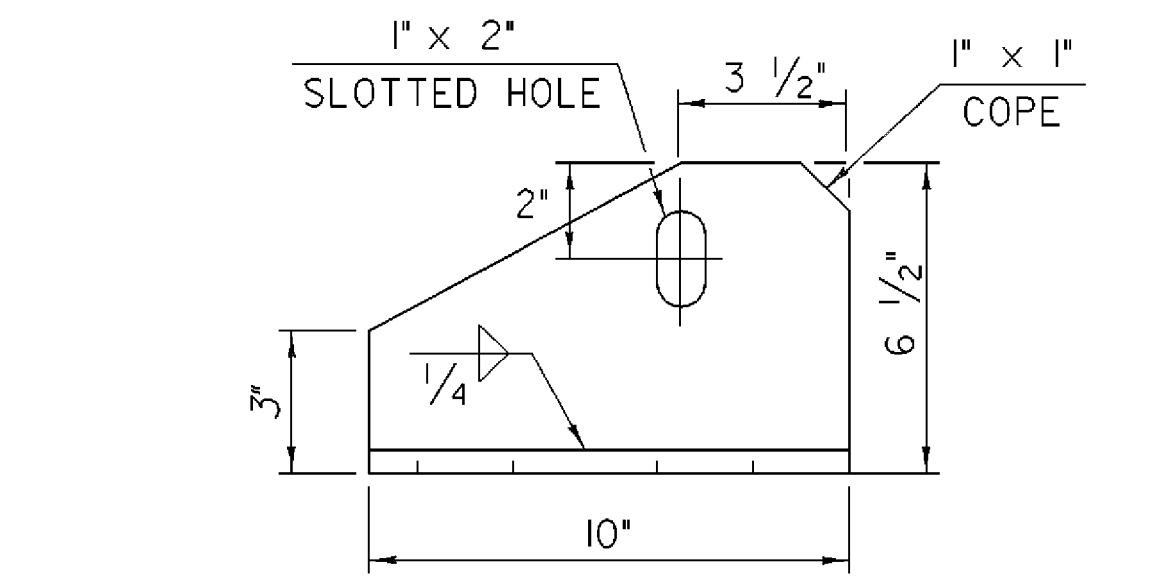
DETAIL "A" NOT TO SCALE



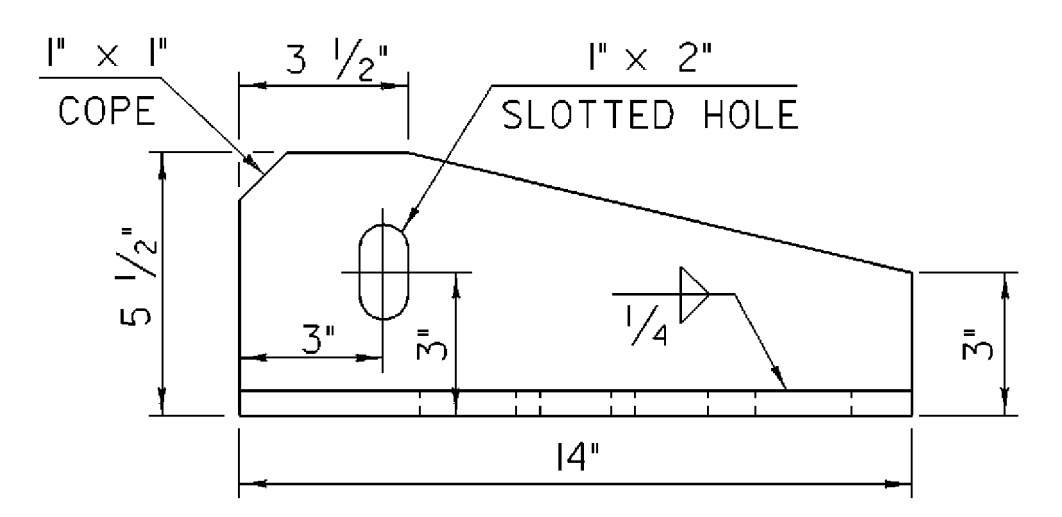
BACKWALL BRACKET PLAN SCALE: 3" = 1'-0"



DECK BRACKET PLAN SCALE: 3" = 1'-0"



BACKWALL BRACKET ELEVATION SCALE: 3" = 1'-0"



DECK BRACKET ELEVATION SCALE: 3" = 1'-0"

ALL PLATES 1/2"