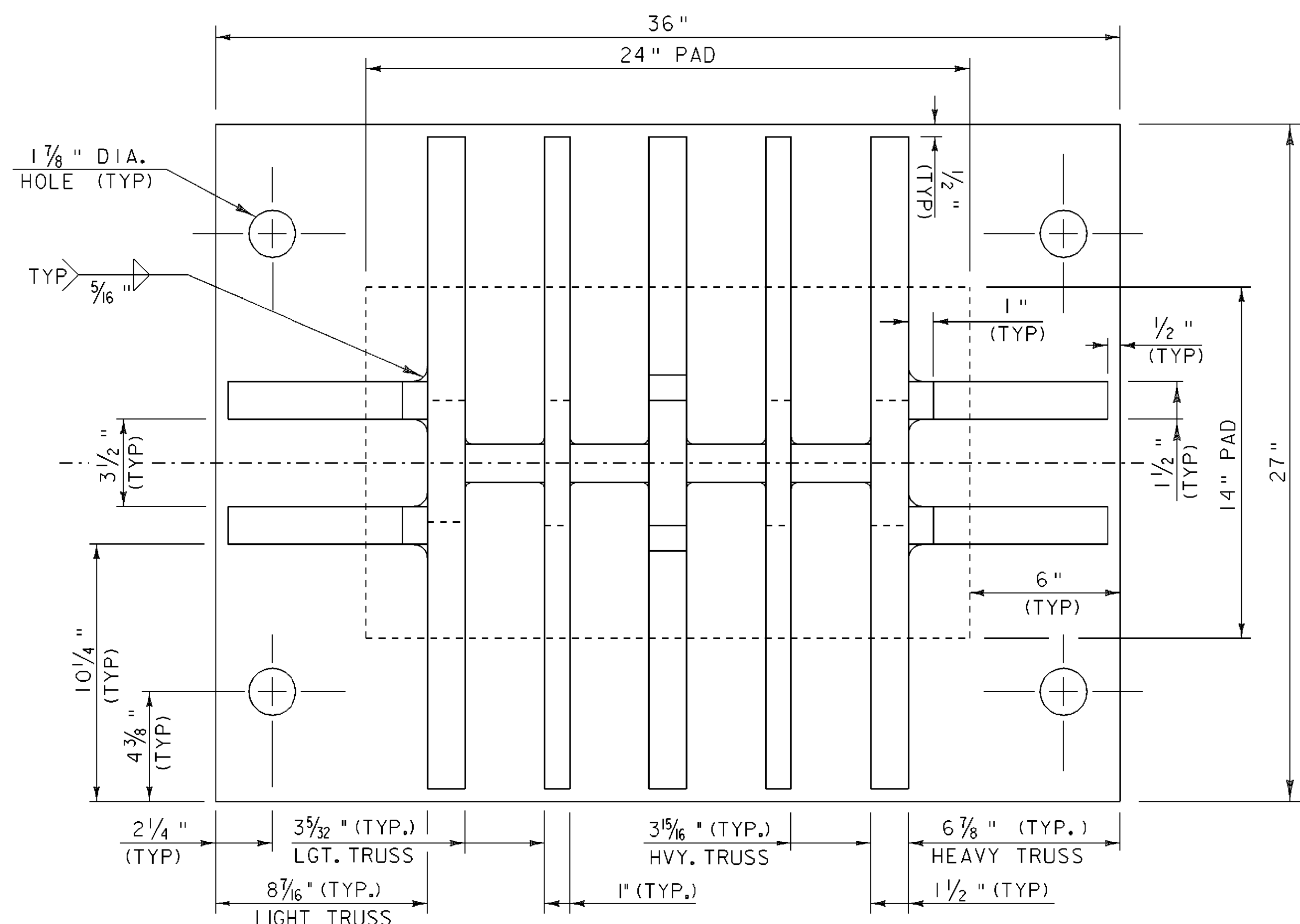


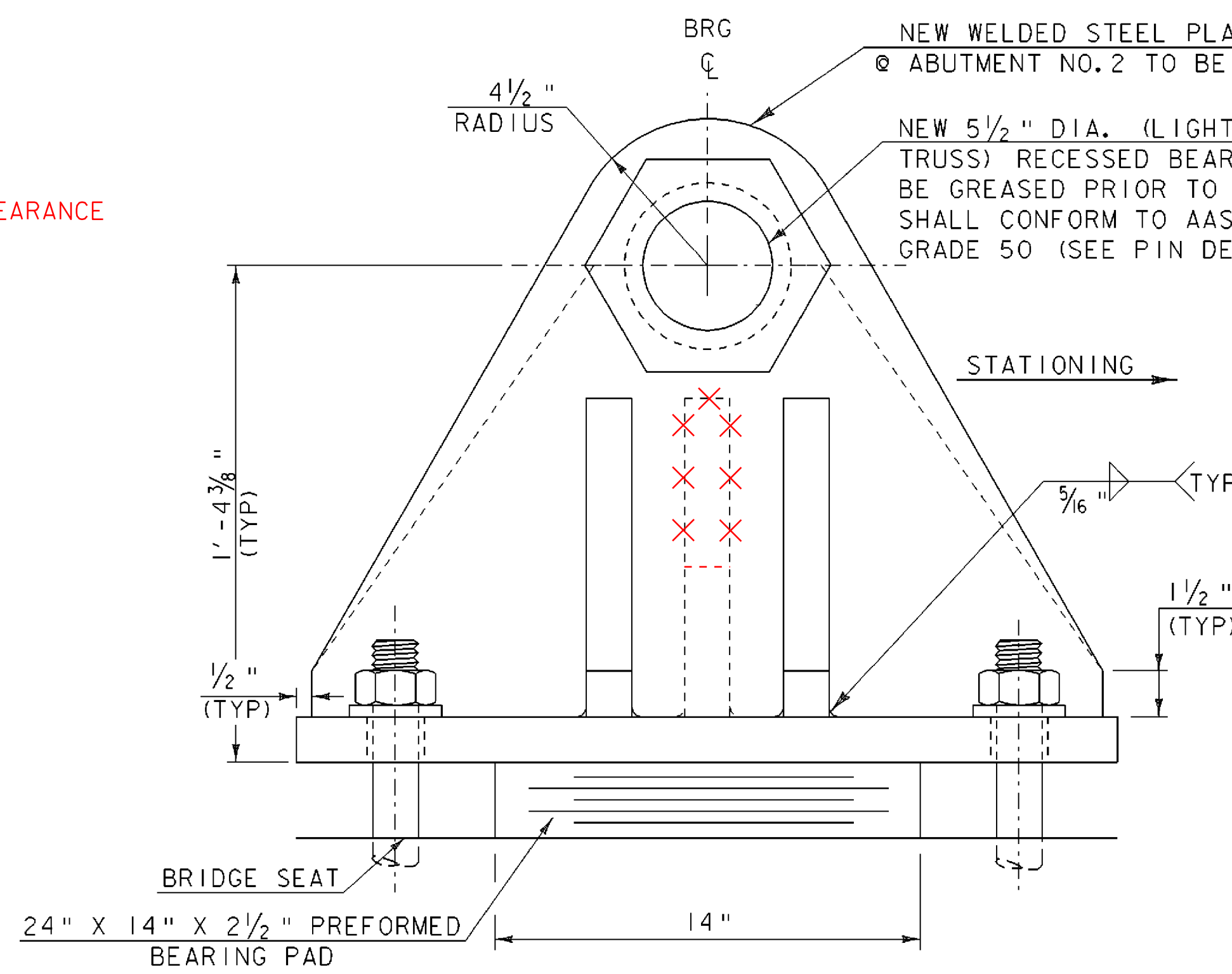
FRONT ELEVATION FIXED END BEARING

SCALE: 3" = 1'-0"



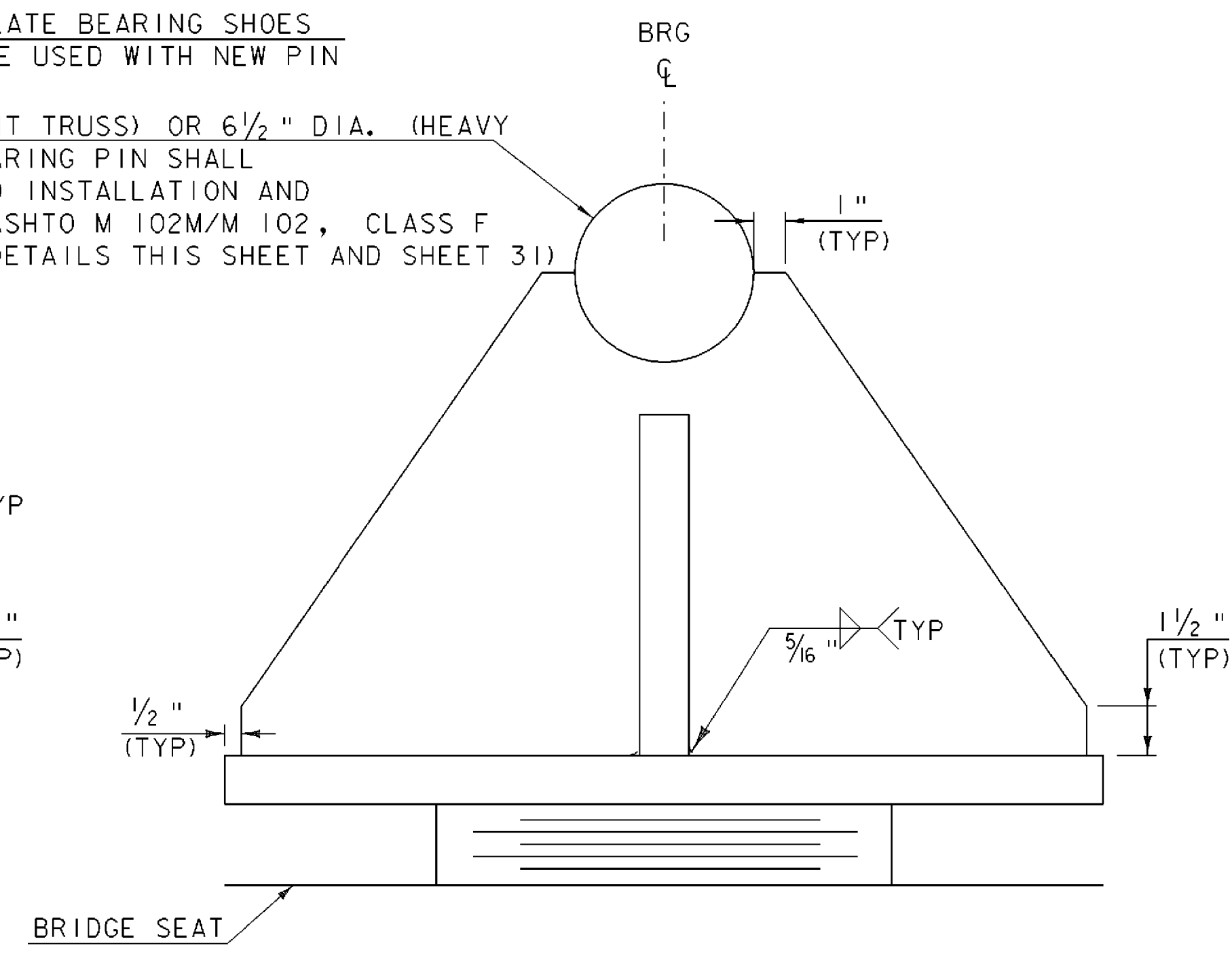
PLAN VIEW OF NEW BEARING SHOE

SCALE: 3" = 1'-0"



SIDE ELEVATION FIXED END BEARING

SCALE: 3" = 1'-0"

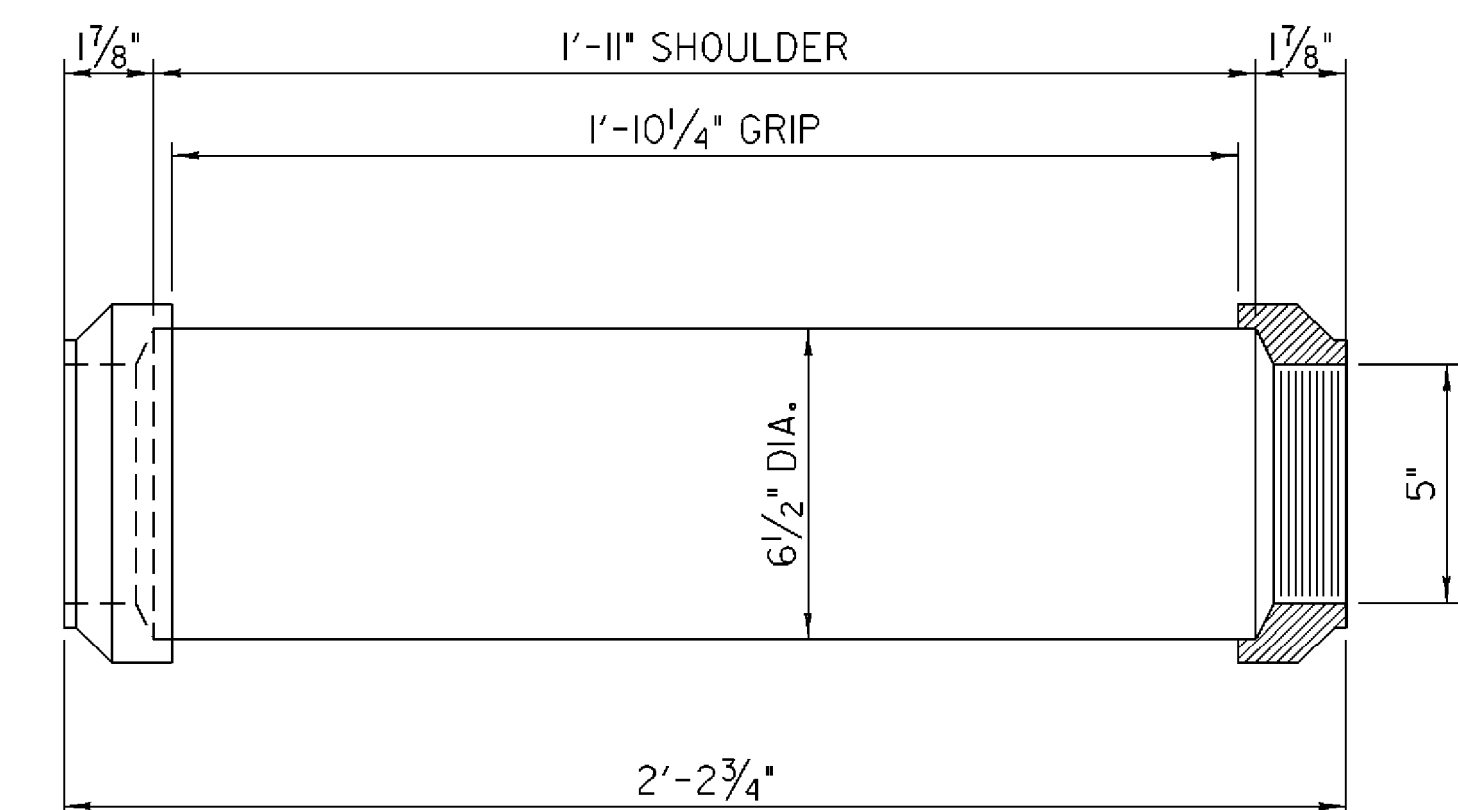


SECTION A-A

SCALE: 3" = 1'-0"

TRUSS BEARING NOTES CONTINUED

- 7) EXISTING ANCHOR BOLTS SHALL BE CUT AT CUT LINE ELEVATION SHOWN ON SHEET 39 OR PULLED OUT IF THIS CAN BE DONE WITHOUT DAMAGE TO EXISTING CONCRETE. THIS WORK WILL BE INCIDENTAL TO ITEM 529.20 "PARTIAL REMOVAL OF STRUCTURE".
- 8) REMOVAL OF EXISTING TRUSS BEARINGS SHALL BE PAID FOR AS PART OF ITEM 529.20, "PARTIAL REMOVAL OF STRUCTURE".
- 9) DESIGN CRITERIA:
 - A: PAD TO CONCRETE DESIGN PRESSURE = 1000 PSI
 - B: MINIMUM ALLOWABLE DESIGN ROTATION = 0.015 RADIAN
 - C: HORIZONTAL CAPACITY SHALL BE MINIMUM OF 10% VERTICAL CAPACITY.
 - D: DESIGN LOAD PER TRUSS BEARING = 323 KIPS
 - RDL = 221 KIPS
 - RLL = 102 KIPS
- 10) SHOP DRAWINGS CONFORMING TO SUBSECTION 531.03 SHALL BE SUBMITTED TO INCLUDE WELDING AND BONDING PROCEDURES.
- 11) THE FABRICATOR SHALL METALIZE THE BEARINGS IN ACCORDANCE WITH SUBSECTION 506.15 (b) AFTER FABRICATION AND SHOP APPLY A PAINT SYSTEM MEETING SPECIFICATION 513 TO THE OUTSIDE OF THE BEARINGS. THE FINAL COLOR SHALL BE GREEN COLOR CHIP #14062. THE COST OF ANY METALIZING OR SHOP APPROVED PAINT WILL BE CONSIDERED INCIDENTAL TO ITEM 531.13 "BEARING DEVICE ASSEMBLY, STEEL".
- 12) ITEM 531.13, "BEARING DEVICE ASSEMBLY, STEEL" SHALL INCLUDE THE FABRIC BEARING PADS, ANCHOR BOLTS, WASHERS, STAINLESS STEEL, SOLE PLATES, NEW STEEL PLATES THAT MAKE UP BEARING, PINS, ANCHOR BOLTS, WASHERS, NUTS, WELDING, INSTALLATION AND OTHER INCIDENTALS REQUIRED TO CONSTRUCT THE TRUSS BEARINGS.



PIN DETAIL HEAVY TRUSS

SCALE: 3" = 1'-0"

TRUSS
FIXED BEARING DETAILS

PROJECT NAME: SPRINGFIELD	PLOT DATE: 27-DEC-2007
PROJECT NUMBER: BHO 1442(30)	DRAWN BY: D. PETERSON
FILE NAME: 96J348\str\s96j348brg.dgn	DESIGNED BY: C. CARLSON
PROJECT MANAGER: R. R. WHITCOMB	CHECKED BY: C. CARLSON
DESIGNED BY: C. CARLSON	SHEET 32 OF 85