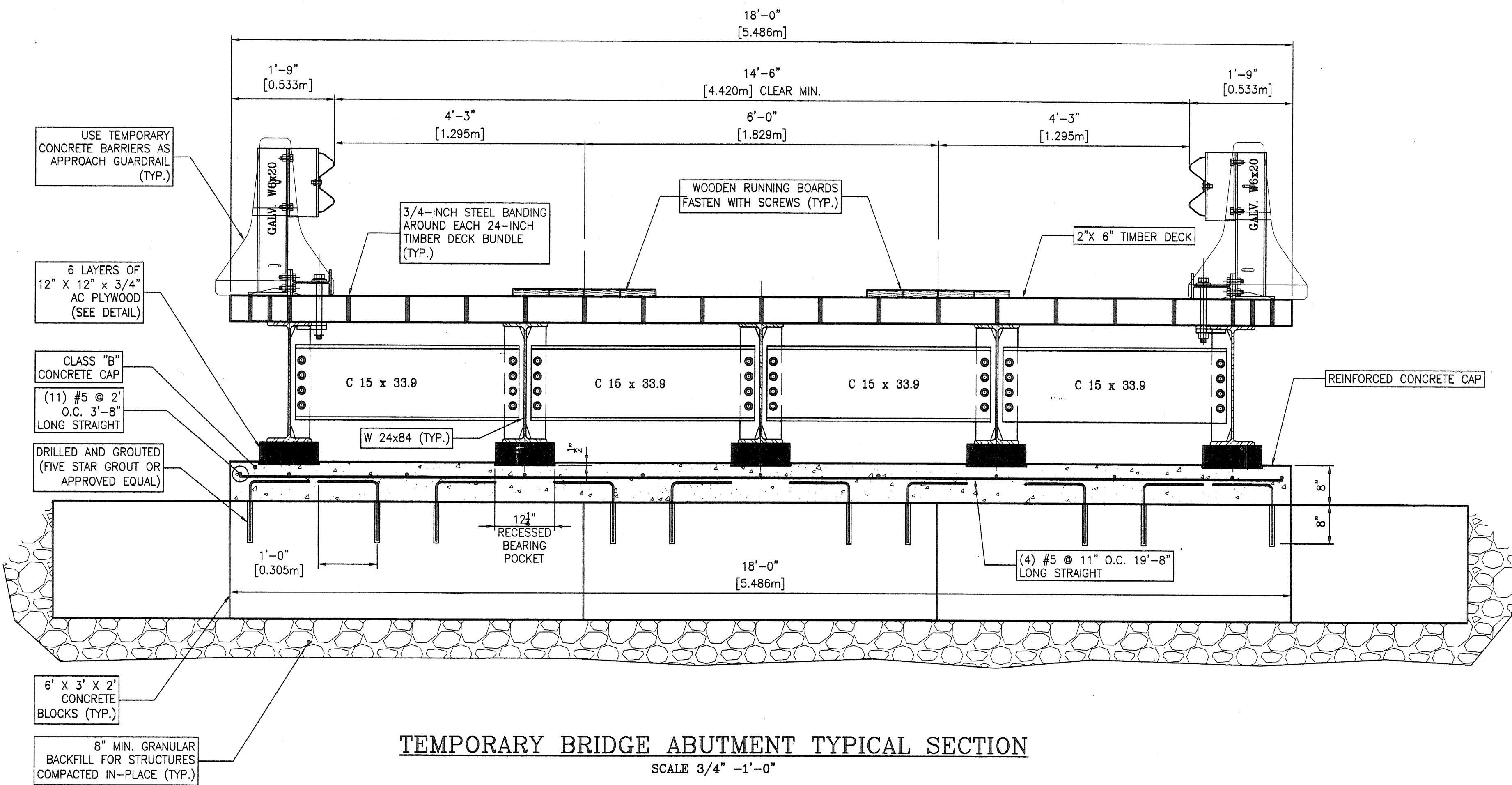
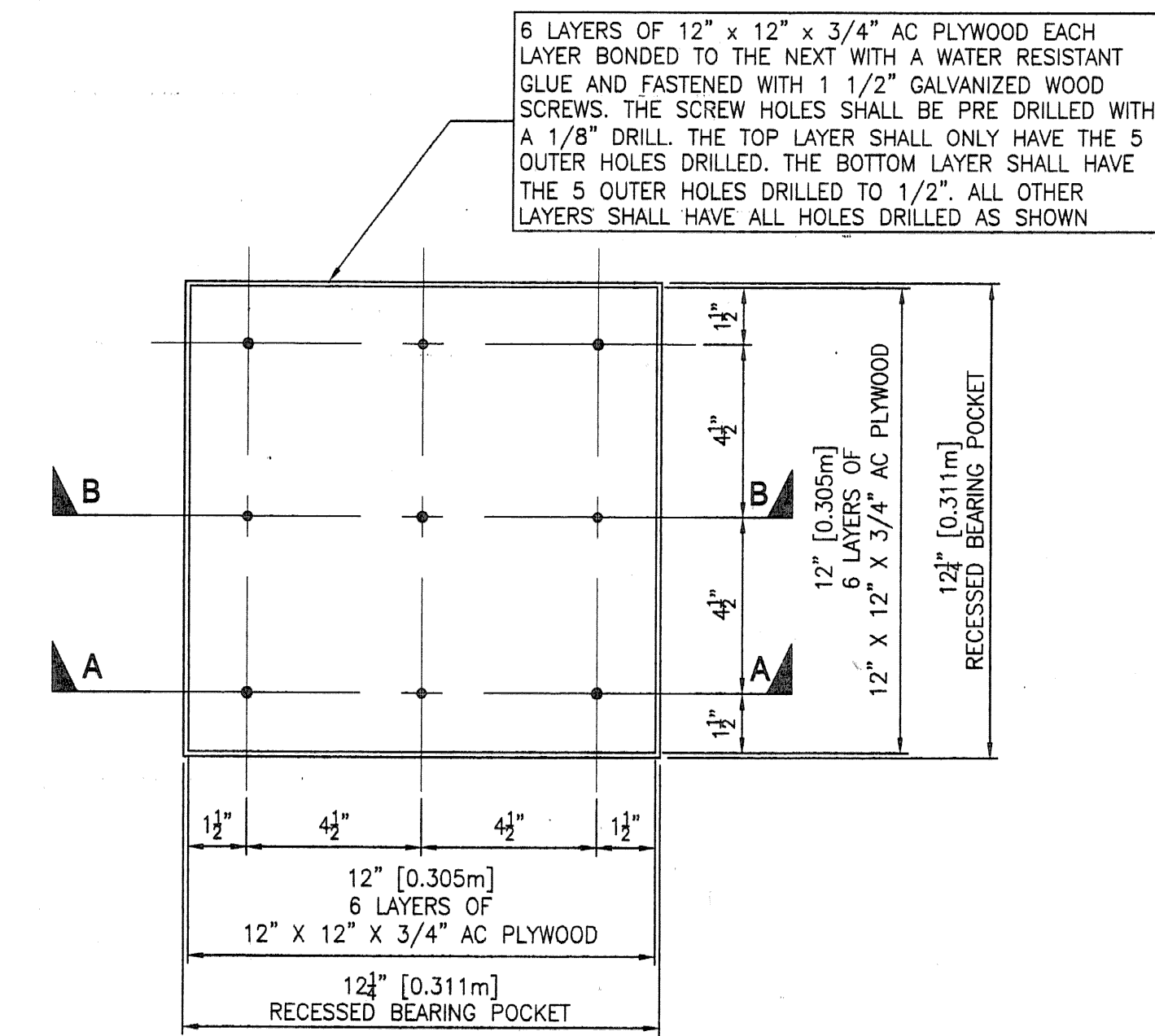


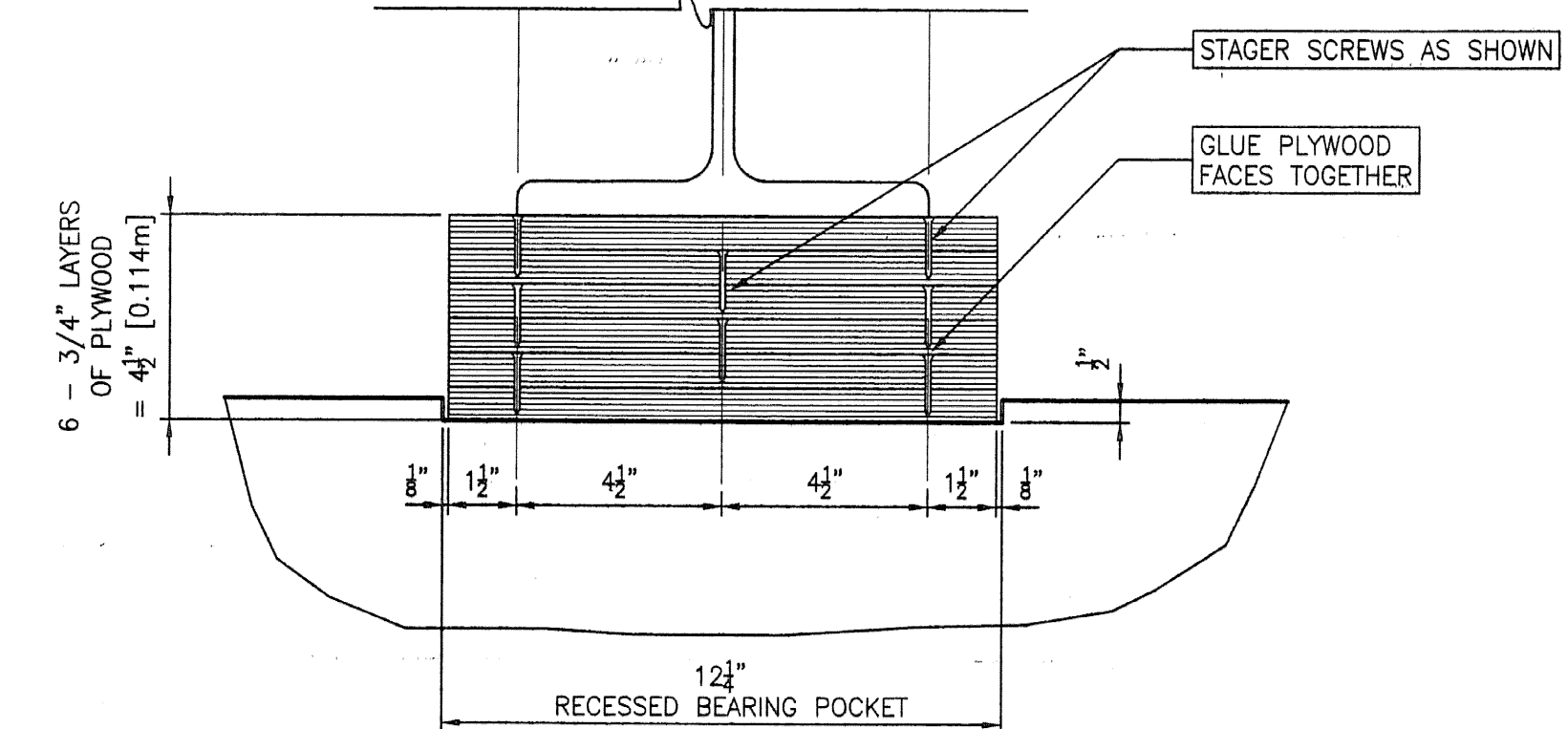
TEMPORARY BRIDGE TYPICAL SECTION
SCALE 3/4" = 1'-0"



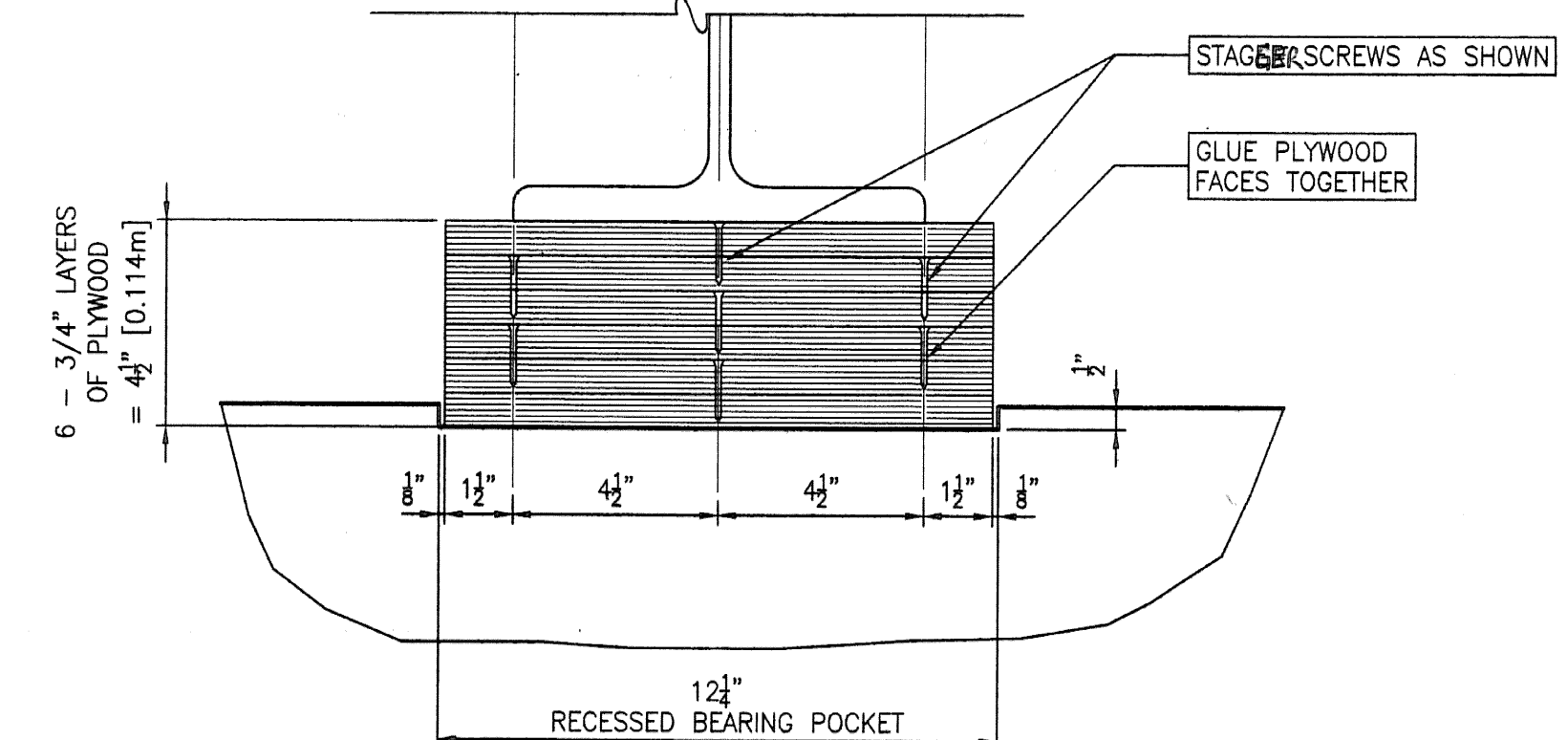
TEMPORARY BRIDGE ABUTMENT TYPICAL SECTION
SCALE 3/4" = 1'-0"



PLAN



SECTION A-A



SECTION B-B

NOTES:

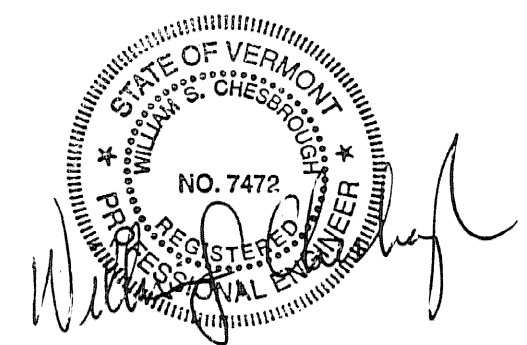
1. THE PLYWOOD MUST BE RECEIVED DRY AND MOISTURE FREE. CONSEQUENTLY STORED IN DRY PLACE PRIOR TO FABRICATION.
2. THERE WILL BE ± 1/32" TOLERANCE ON ANY MEASUREMENT SHOWN ON THIS SHEET.
3. THE BEARING SHALL BE CONSTRUCTED WITH THE SMOOTH SIDE OF THE PLYWOOD FACING OUTWARD FOR THE TOP AND BOTTOM LAYERS.

BEARING ASSEMBLY DETAIL

SCALE 3" = 1'-0"

NOTES:

1. DESIGN LOADING IS HS-20-44.
2. STRUCTURAL STEEL TO BE GRADE 36 (FY = 36 KSI).
3. TIMBER DECKING TO BE SPRUCE-PINE FIR NO. 2 (SPF 2) GRADE OR HIGHER.



THE DRAWINGS FOR THIS PROJECT SHALL NOT BE COPIED, REUSED, REVISED OR ALTERED IN ANY WAY WITHOUT THE EXPRESS WRITTEN APPROVAL AND AUTHORITY OF CHESBROUGH CONSULTING, P.C.			
CHESBROUGH CONSULTING, P.C.			
P.O. BOX 8822 Burlington, Vermont 05402		Tel: (802) 658-7600 Fax: (802) 658-7613 ccandcc@verizon.net	
PROJECT NAME:	PROPOSED IMPROVEMENT TEMPORARY BRIDGE PROJECT CABOT, VERMONT	DESIGN NOTE ADDITION	NO DATE
TITLE:	TYPICAL SECTION BEARING ASSEMBLY DETAILS	REVISIONS	
DRAWN BY:	GEW	CHECKED BY:	WSC
PROJECT NO.:	081301	DATE:	APRIL 17, 2008
SHEET:	1	OF 3	

FILE: P:\Project Files\2008\081301 - Tremonty Key Structure\Details\081301 Bridge Details.dwg, Mon, 15, 2008, 11:27am