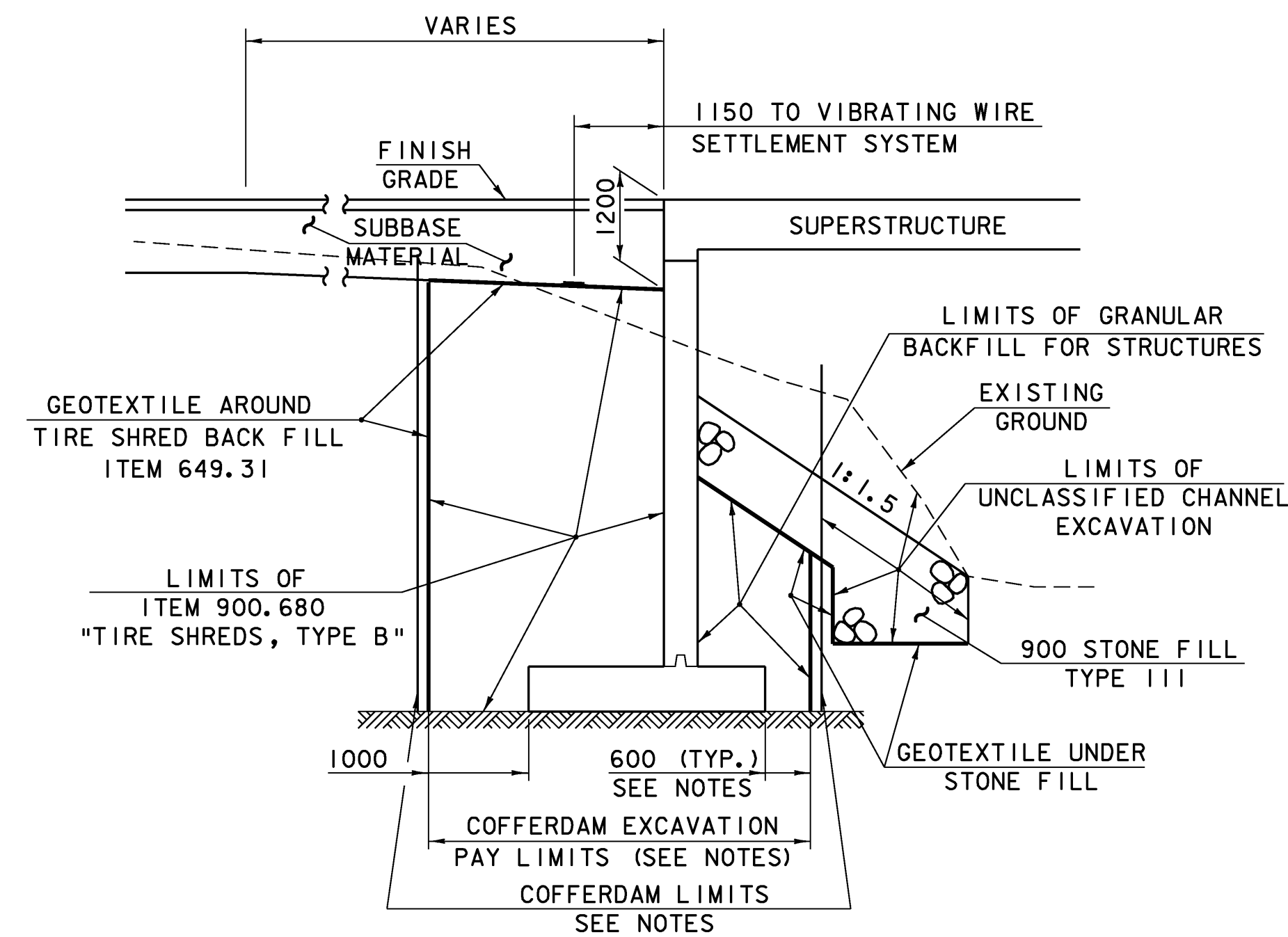


TYPICAL BRIDGE SECTION

SCALE = 1:40

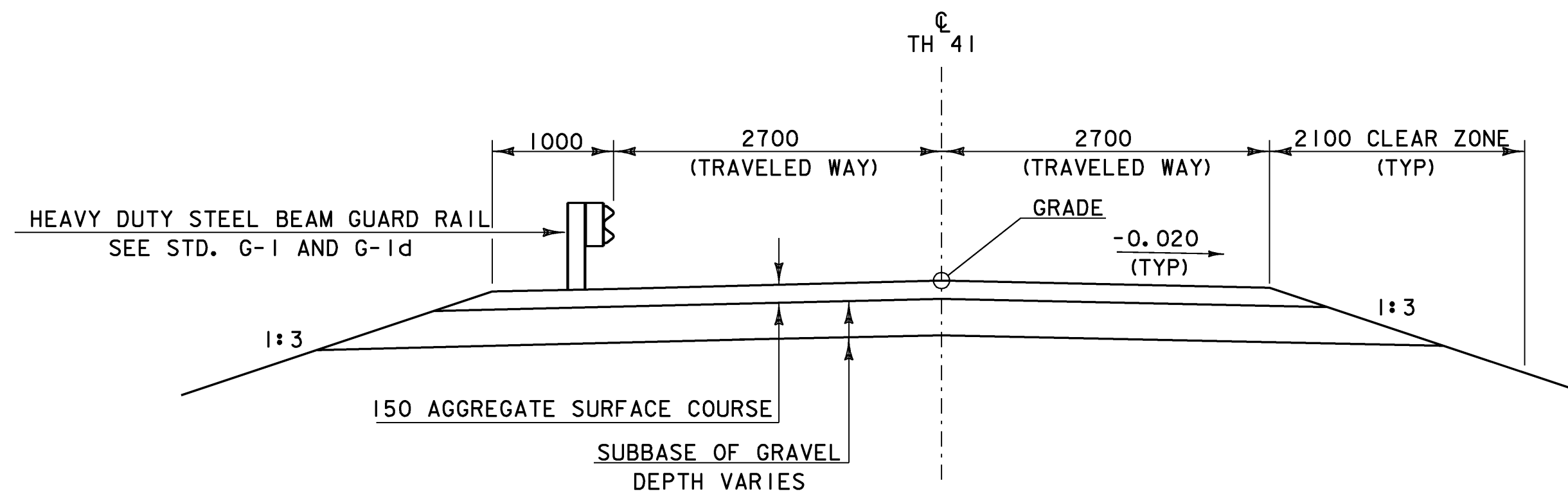


TYPICAL ABUTMENT SECTION

(NOT TO SCALE)

NOTES

1. COFFERDAM LIMITS TO BE DETERMINED BY THE CONTRACTOR
2. THE PAY LIMITS OF "COFFERDAM EXCAVATION, EARTH" AND "COFFERDAM EXCAVATION, ROCK" SHALL BE 1000 mm FROM THE HEEL OF THE FOOTING, AND 600 mm OUTSIDE THE REST OF THE PERIMETER OF THE FOOTING, UNLESS OTHERWISE SHOWN ON THE PLANS, UP TO EXISTING GROUND OR BOTTOM OF SUBBASE, WHICHEVER IS LOWER.
3. IF A COFFERDAM IS CONSTRUCTED WHICH IS LARGER THAN THE INDICATED COFFERDAM EXCAVATION PAY LIMITS, PAYMENT FOR ALL UNCLASSIFIED CHANNEL EXCAVATION, INCLUDING THAT PORTION WHICH IS INSIDE THE COFFERDAM BUT OUTSIDE THE COFFERDAM EXCAVATION LIMITS, WILL BE MADE AT THE CONTRACT UNIT PRICE FOR UNCLASSIFIED CHANNEL EXCAVATION.
4. SEE SHEETS 17 AND 20-21 FOR GEOTECHNICAL INSTRUMENTATION DETAILS.

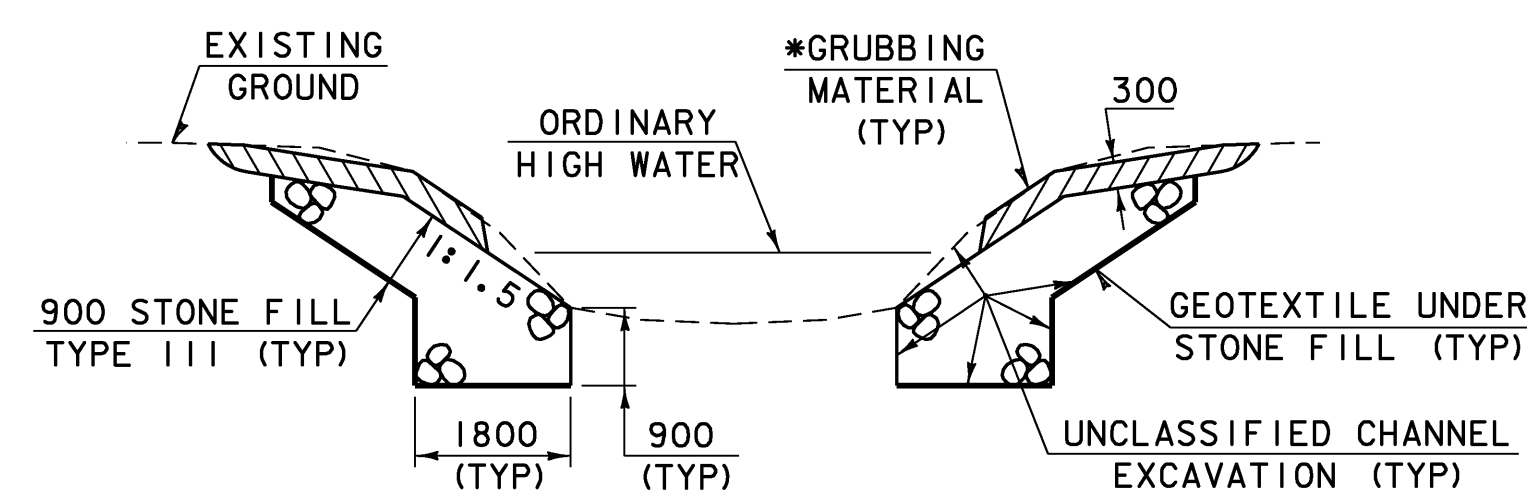


TYPICAL WITH GUARD RAIL

TYPICAL WITHOUT GUARD RAIL

TYPICAL ROAD SECTION

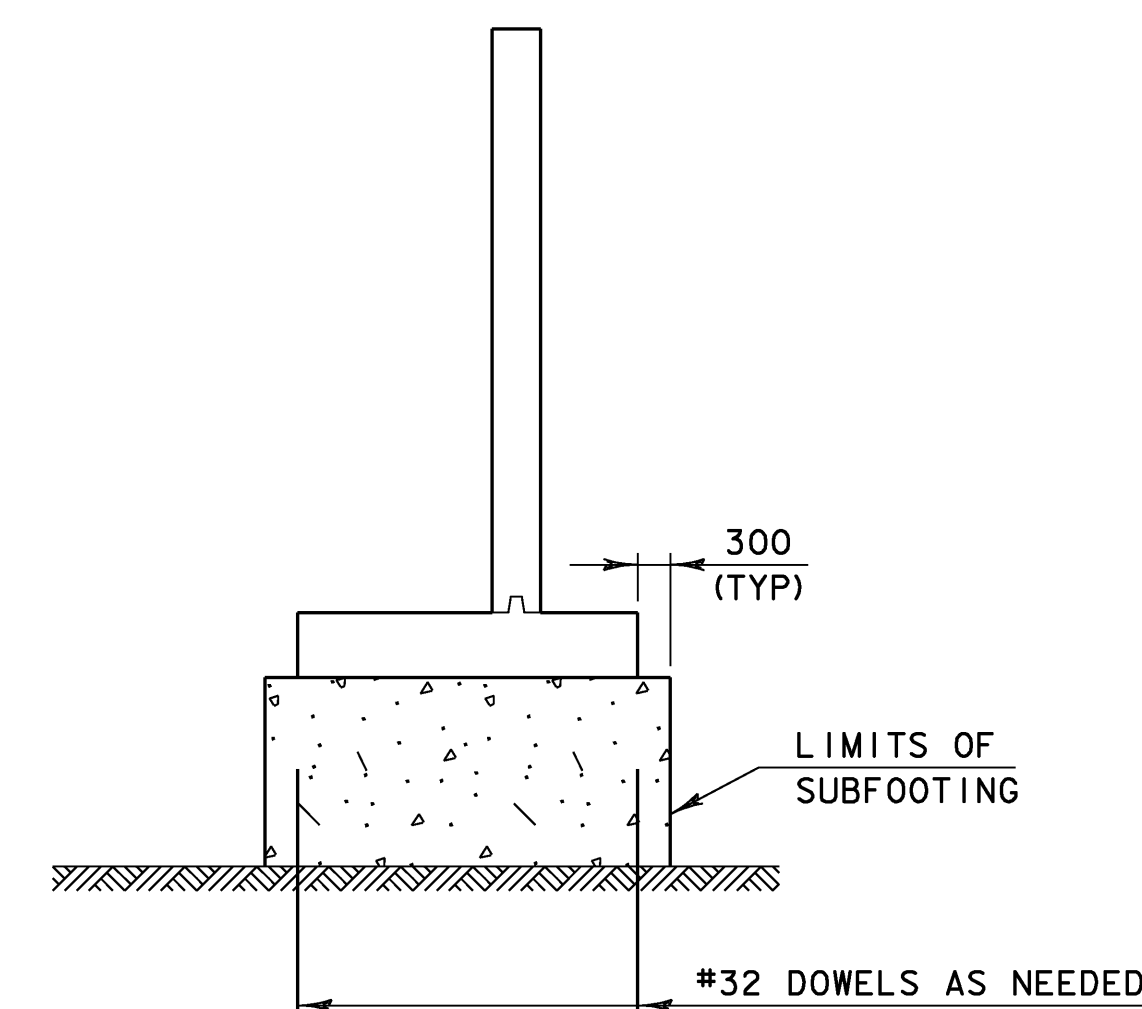
SCALE = 1:40



TYPICAL CHANNEL SECTION

(NOT TO SCALE)

*GRUBBING MATERIAL SHALL NOT BE PLACED ON THE STONE FILL IN THE AREA UNDER THE BRIDGE. WHENEVER CHANNEL SLOPE INTERSECTS ROADWAY SUBBASE, GRUBBING MATERIAL SHALL BEGIN AT THE BOTTOM OF SUBBASE. GRUBBING MATERIAL SHALL NOT BE PLACED BELOW ORDINARY HIGH WATER (OHW).

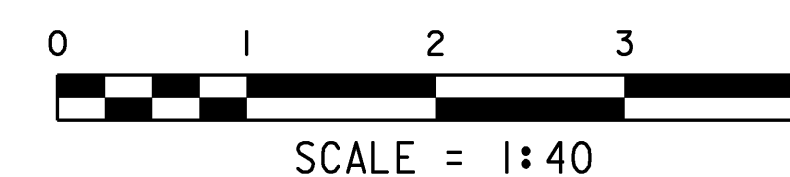


SUBFOOTING DETAILS

(NOT TO SCALE)

(SEE GENERAL NOTES, SHEET 17, FOR ADDITIONAL DETAILS)

MATERIAL ITEM	TOLERANCE
AGGREGATE SURFACE COURSE	± 10 mm
SUBBASE	± 30 mm



PROJECT: CABOT	PROJECT NO.: BRO 1446 (27)
DESIGN FILE NAME: 96j270\Structures\sj270typ.dgn	PLOT DATE: 07-DEC-2007
IPARM FILE NAME: sj270typ.i	DRAWN BY: P.G. JARVIS
DESIGNED BY: K.M. HIGGINS	CHECKED BY: K.M. HIGGINS
SQUAD LEADER: C.P. WILLIAMS	SHEET: 5 OF 42
TYPICAL SECTIONS SHEET	