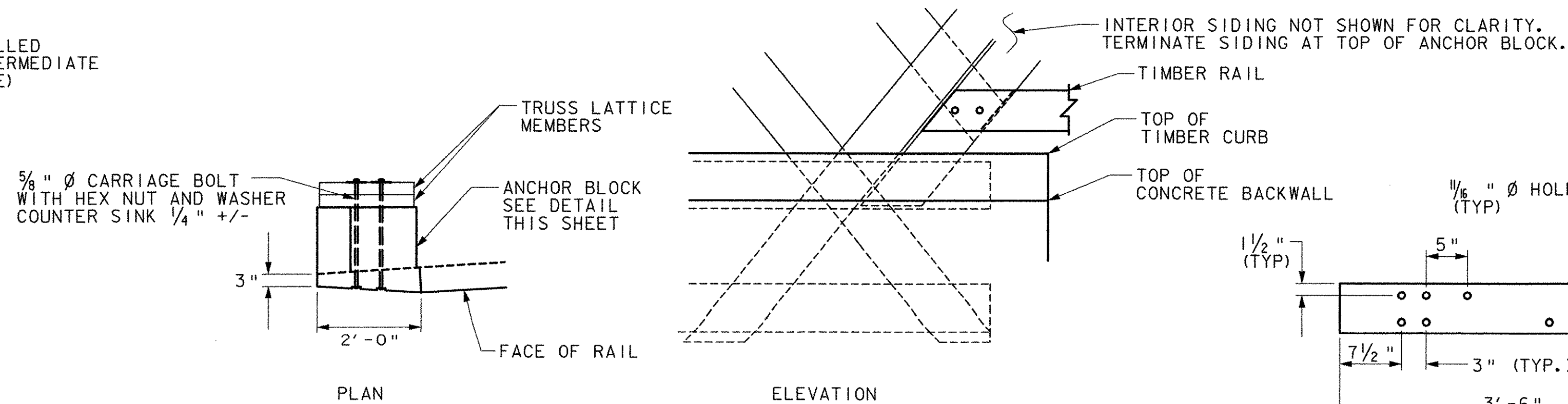


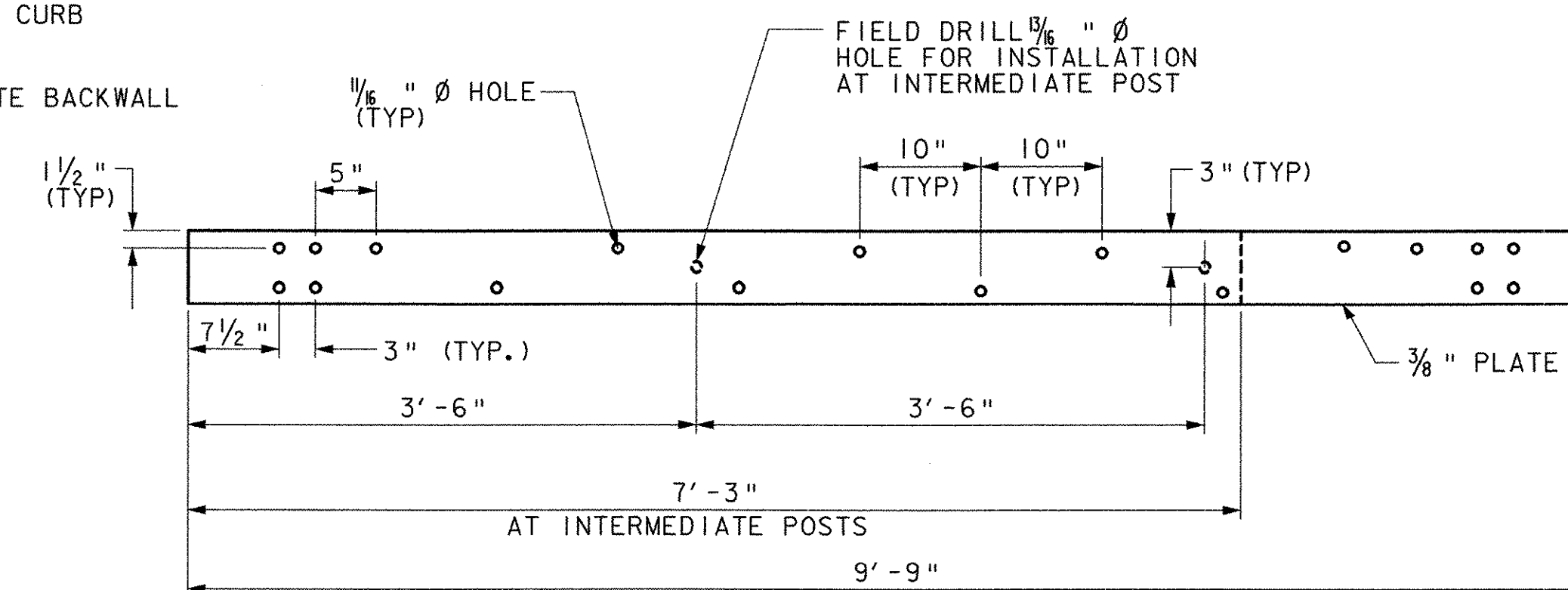
**PLAN VIEW AT RAIL POST**

SCALE: 1/2" = 1'-0"



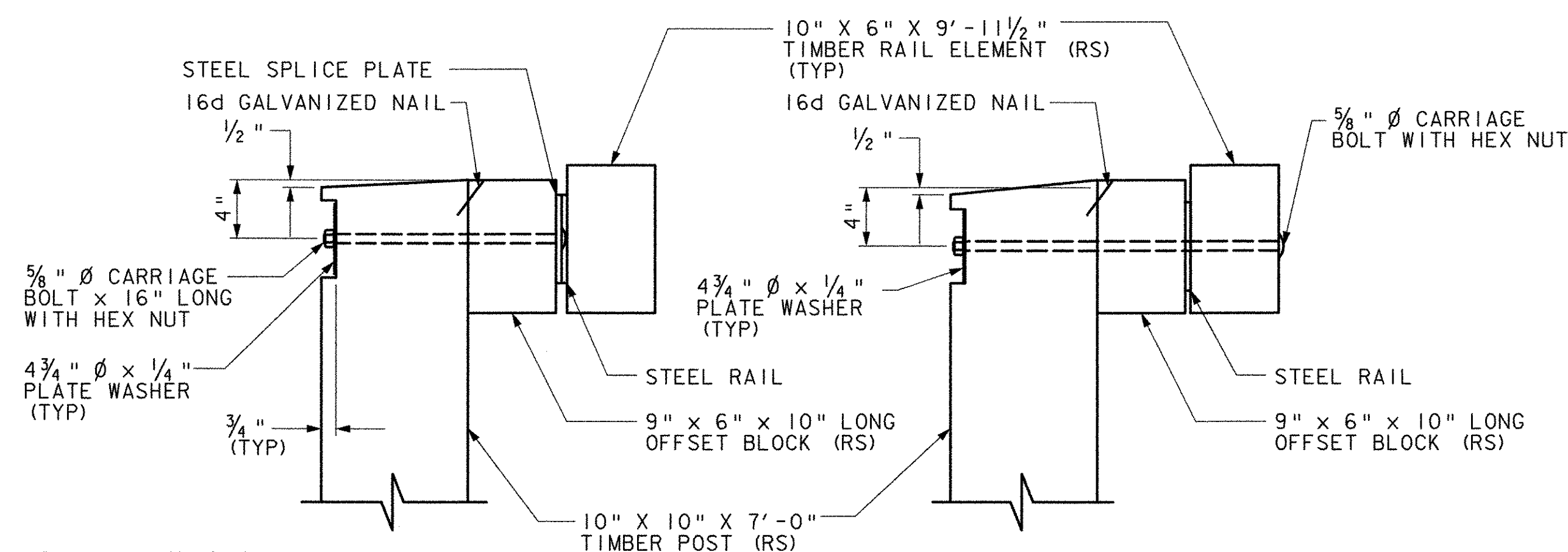
**TIMBER RAIL ATTACHMENT DETAILS**

SCALE: 1/2" = 1'-0"



**STEEL RAIL DETAIL**

SCALE: 1" = 1'-0"

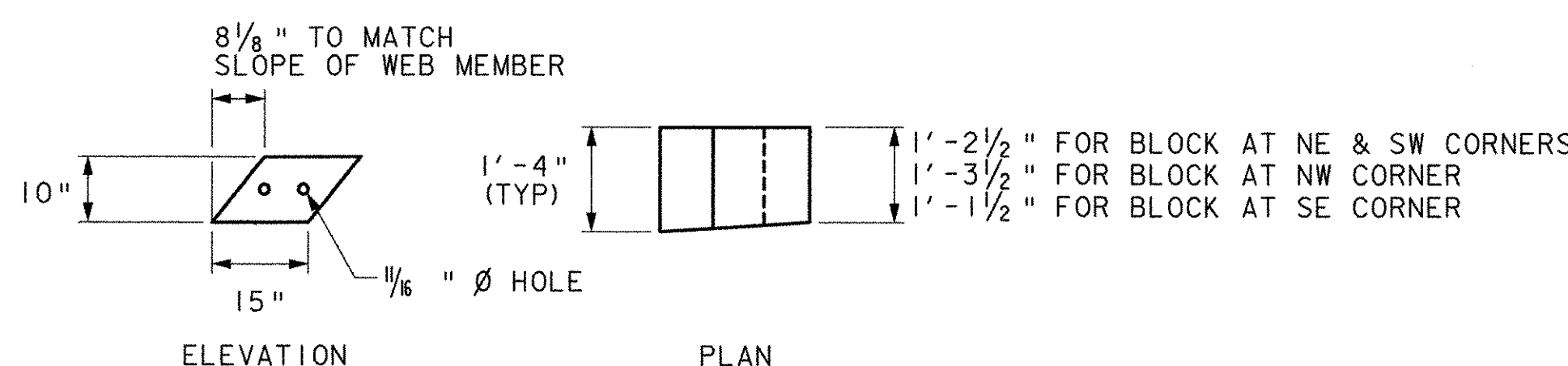


**RAIL POST**

SCALE: 1/2" = 1'-0"

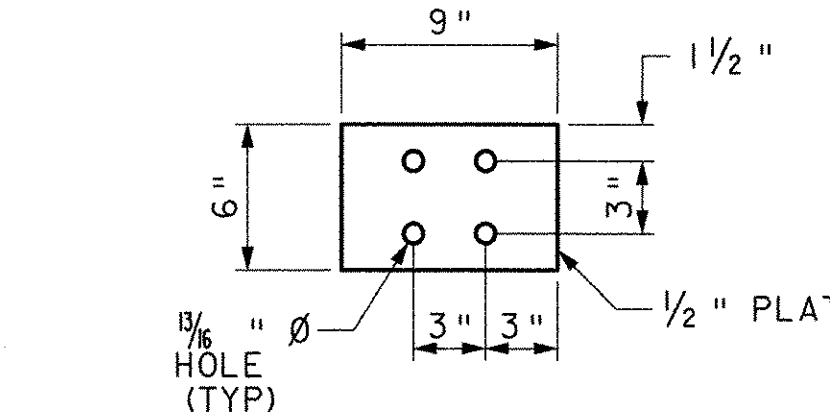
**INTERMEDIATE RAIL POST**

SCALE: 1/2" = 1'-0"



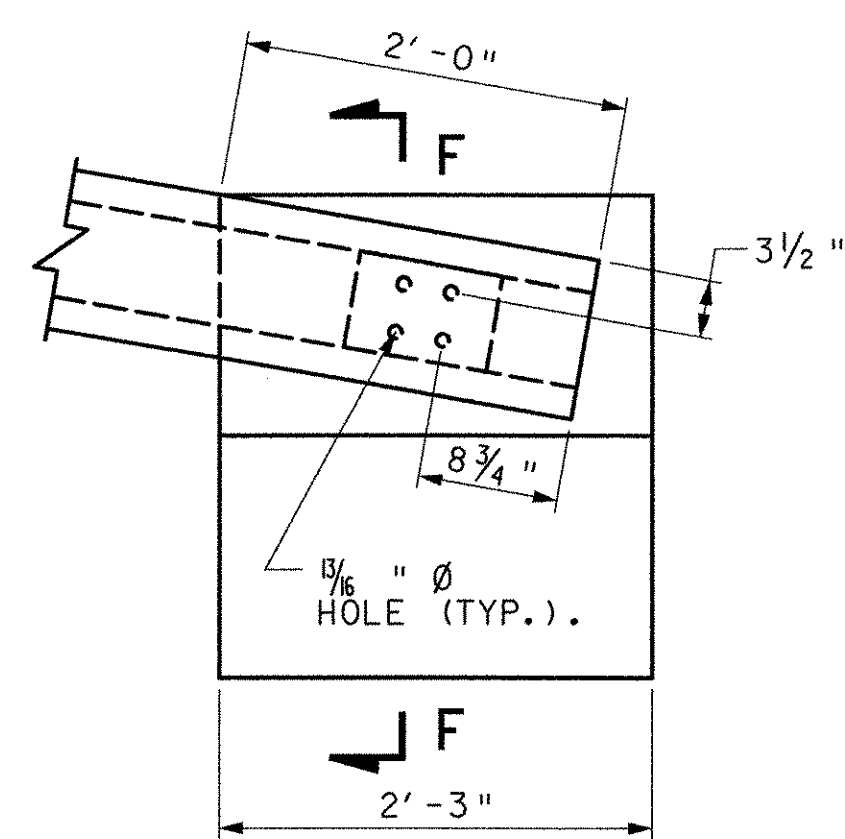
**ANCHOR BLOCK DETAILS**

SCALE: 1/2" = 1'-0"



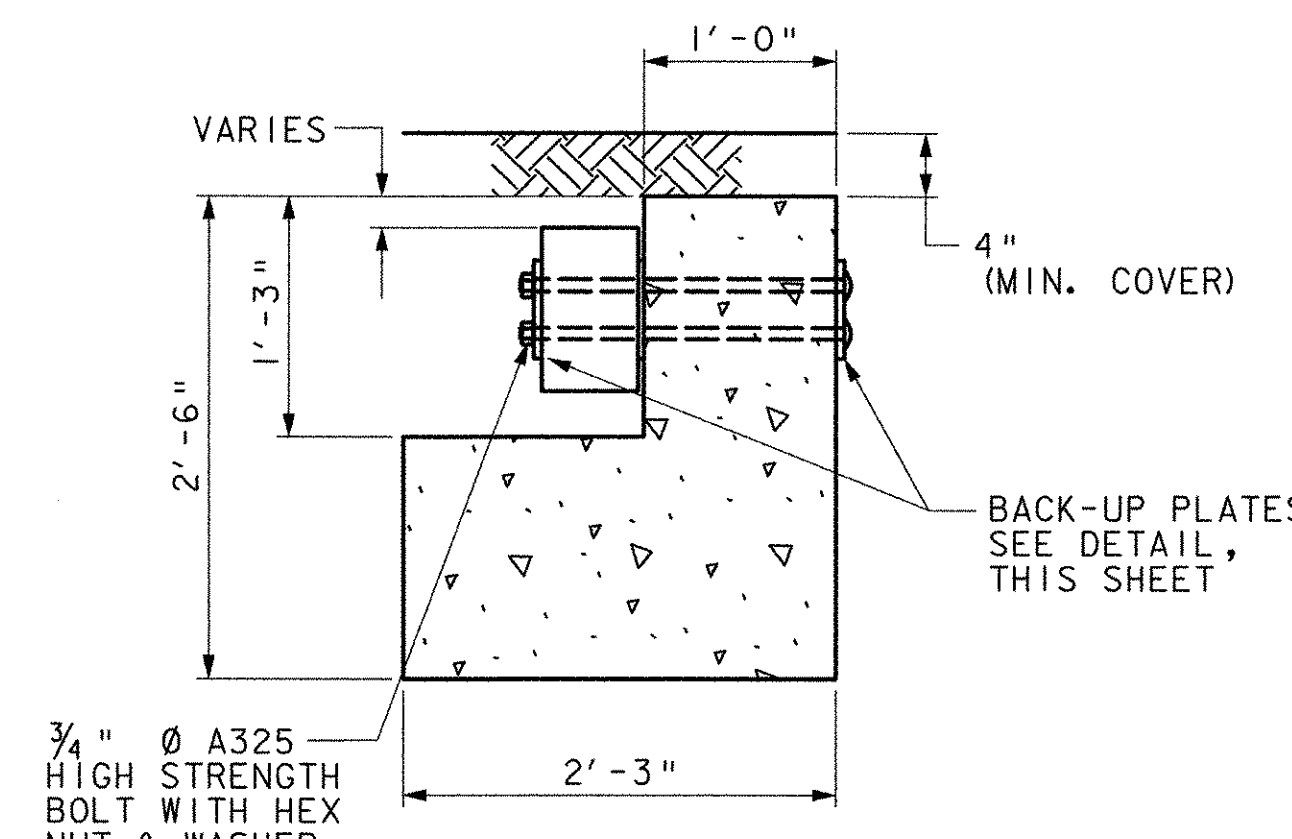
**BACK-UP PLATE DETAIL**

SCALE: 1/2" = 1'-0"



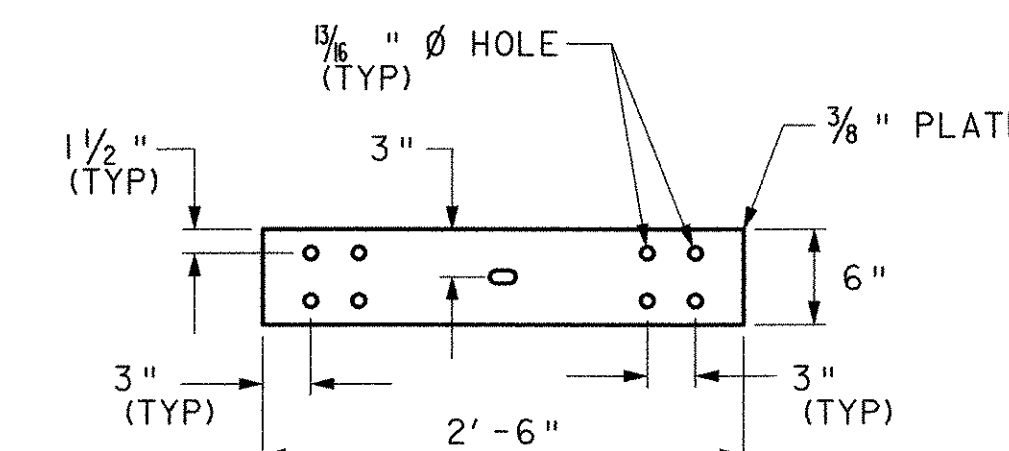
**DETAIL F**

SCALE: 1" = 1'-0"



**SECTION F-F**

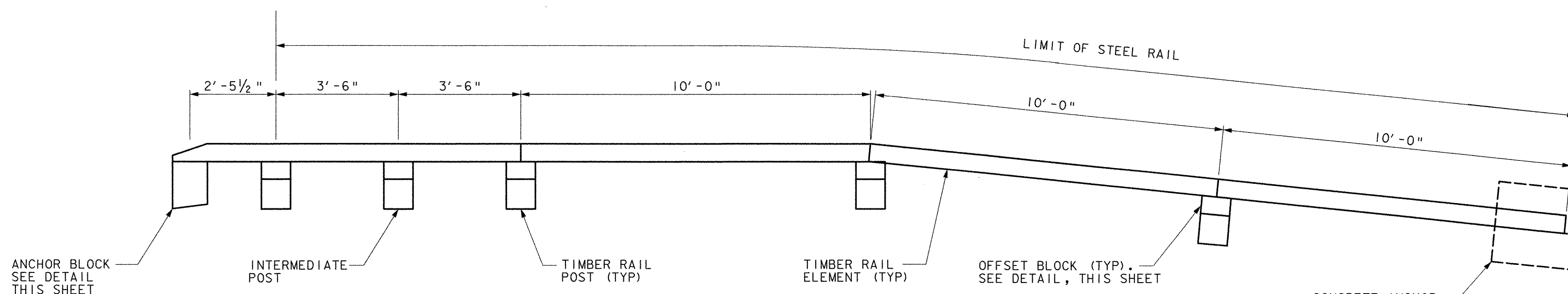
SCALE: 1" = 1'-0"



**STEEL SPLICE PLATE DETAIL**

SCALE: 1" = 1'-0"

- RAILING NOTES:**
1. ALL HARDWARE AND STEEL PLATES SHALL BE AASHTO M270 GRADE 36 AND SHALL BE GALVANIZED IN ACCORDANCE WITH ASTM A123 OR A153.
  2. ALL MATERIAL FOR POST AND TIMBER RAIL ELEMENT SHALL CONFORM TO SECTION 728 OF VTRANS STANDARD SPECIFICATIONS.
  3. ALL WORK AND MATERIALS (INCLUDING TIMBER RAIL AND POSTS, STEEL RAIL AND PLATES, BOLTS, NUTS, WASHERS, AND CONCRETE ANCHOR) TO INSTALL THE RAILING SHALL BE PAID UNDER ITEM 621.15 "PLANK RAIL (MOD)".



**TYPICAL APPROACH GUIDE RAIL**

SCALE: 1/2" = 1'-0"

**STATE OF VERMONT  
AGENCY OF TRANSPORTATION**

Town Of	PITTSFORD, VT	Bridge No.	31
Highway No.	ELM STREET (TH13)	Log Sta.	
		Surv. Sta.	

COOLEY COVERED BRIDGE REHABILITATION

**APPROACH RAIL DETAILS**

Designed By	J. MESSIER	Drawn By	J. MESSIER
Checked By	Date	Bridge Design Supervisor	Date
E. ALLEN RANDALL	01/03/03		

PROJECT	PITTSFORD	PROJECT NO.	BHO 1443 (36)
---------	-----------	-------------	---------------

I.G.C. Info.		Bridge Sheet No.	Sheet 13 of 15
--------------	--	------------------	----------------



03 JAN 2003 pt:2014:Cooley Bridge Veech:egm:Coord:rdgn