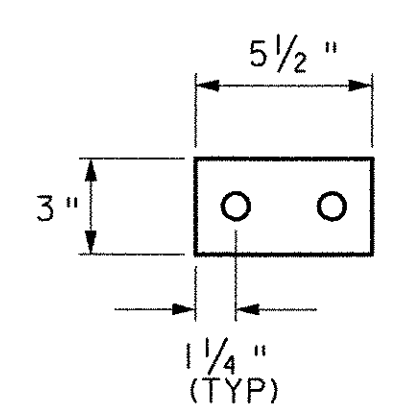
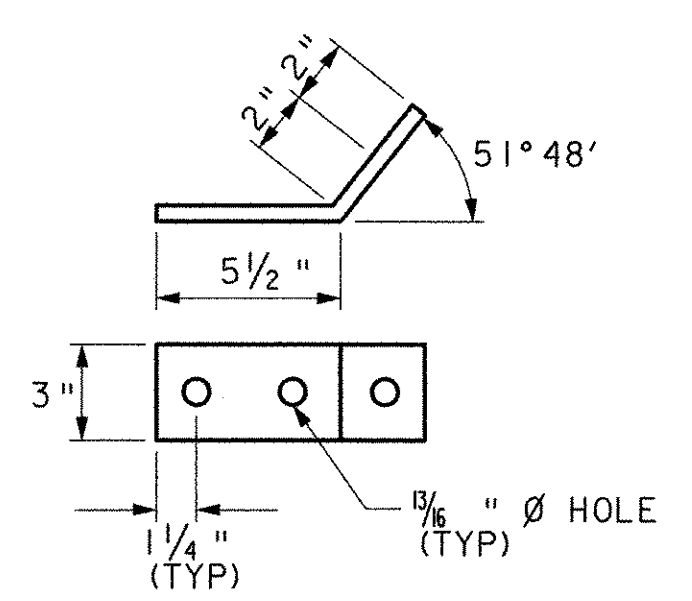


**FLOORBEAM DETAILS**  
SCALE: 1" = 1'

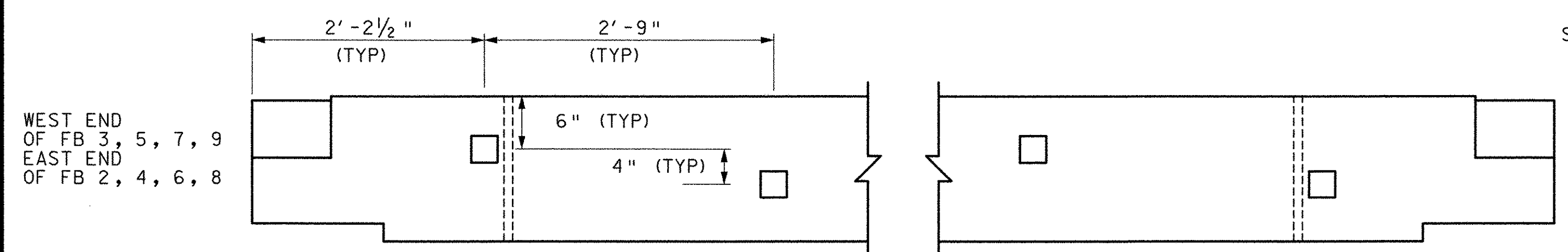
- FLOORBEAM REPLACEMENT:**  
(AFTER DECK AND SIDING HAVE BEEN REMOVED)
1. REMOVE AND DISPOSE EXISTING DISTRIBUTION BEAMS
  2. REMOVE AND DISPOSE EXISTING FLOORBEAMS, RETAIN 5" X 5" (+/-) X-BRACING
  3. REMOVE LOWER MEMBERS OF BOTTOM CHORD OF ONE TRUSS, DISPOSE OF DETERIORATED SECTIONS
  4. INSTALL NEW FLOORBEAMS, INSTALL X-BRACING AS FLOORBEAMS ARE INSTALLED (SEE TENON DETAIL BELOW)
  5. REPAIR AND REINSTALL LOWER MEMBERS OF BOTTOM CHORD



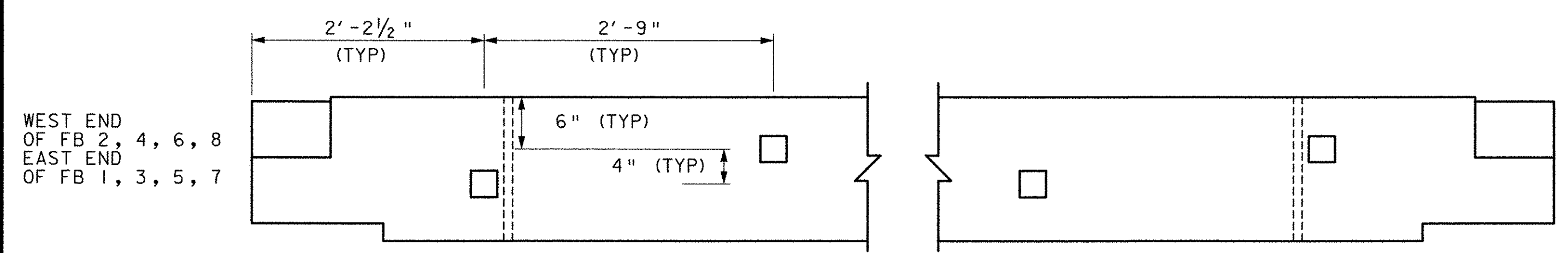
**BACK UP PLATE**  
SCALE: 1/2" = 1'



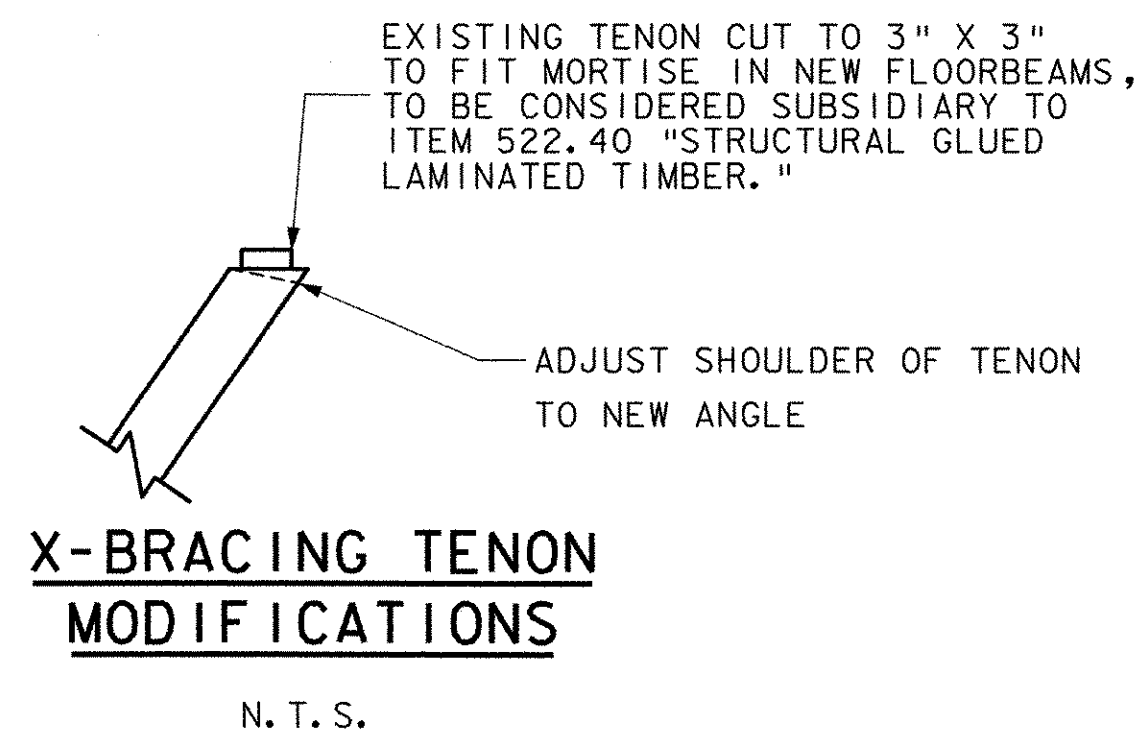
**BENT PLATE**  
SCALE: 1/2" = 1'



SOUTH ELEVATION OF FLOORBEAMS 3, 5, 7, 9  
NORTH ELEVATION OF FLOORBEAMS 2, 4, 6, 8

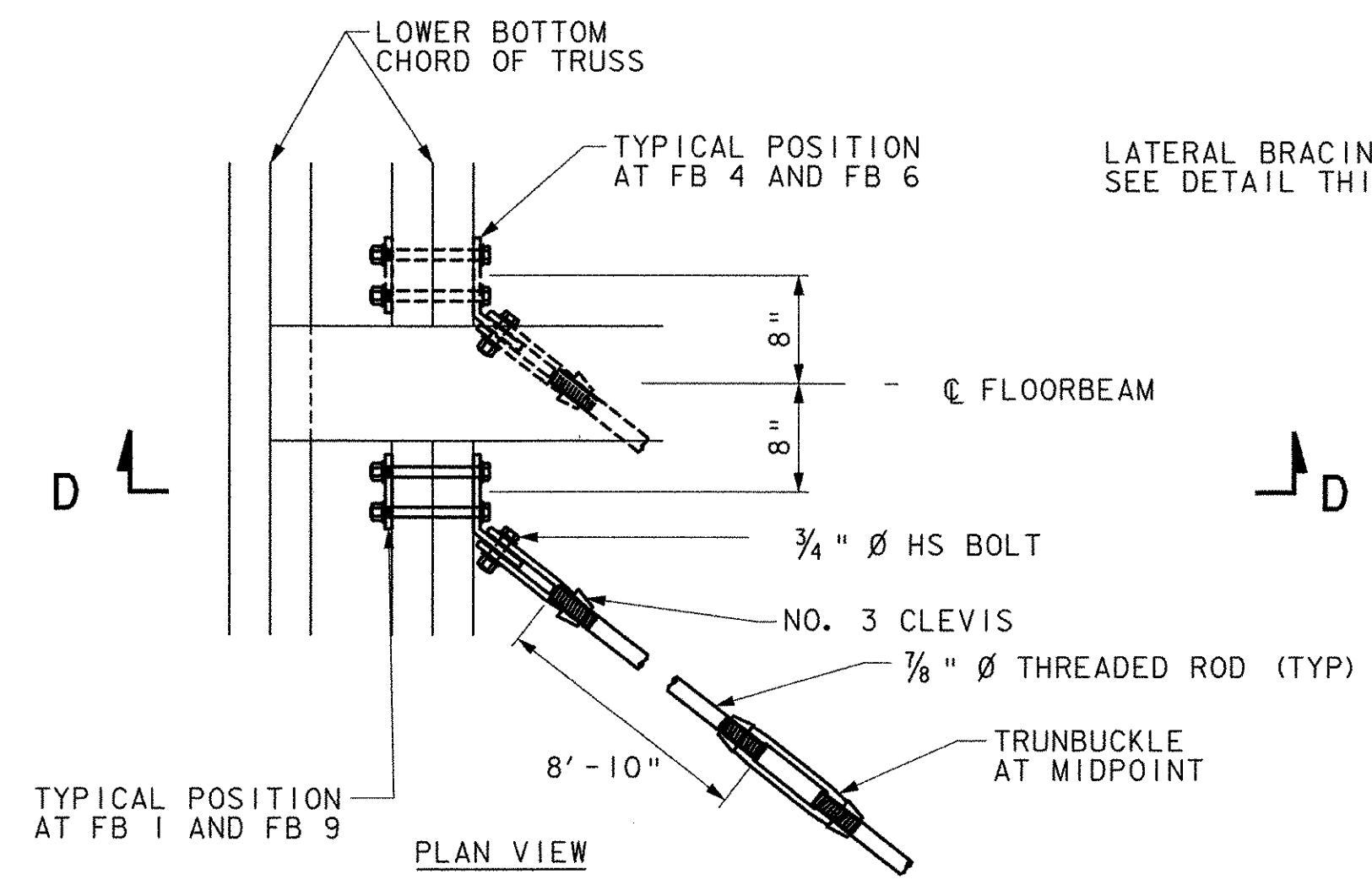


SOUTH ELEVATION OF FLOORBEAMS 2, 4, 6, 8  
NORTH ELEVATION OF FLOORBEAMS 1, 3, 5, 7

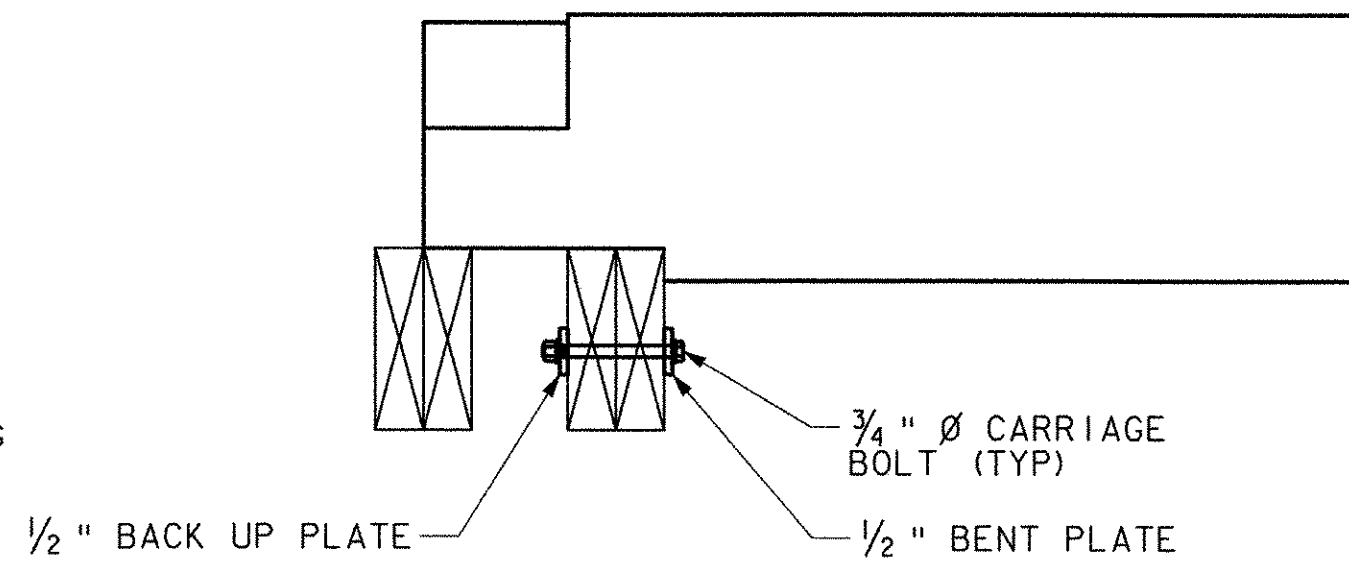


**X-BRACING TENON MODIFICATIONS**  
N. T. S.

- NOTES:**
1. ALL BOLTS SHALL COMPLY WITH THE REQUIREMENTS OF ANSI/ASME B18.2.1-1981 GRADE 2. (EXCEPT AS NOTED)
  2. STEEL PLATES SHALL BE ASTM A36, THE THREADED ROD FOR THE SWAY BRACING SHALL BE AASHTO M270M/M270 GRADE 36
  3. ALL THE WORK AND MATERIALS TO INSTALL THE LOWER LATERAL BRACING SHALL BE PAID FOR UNDER ITEM 506.75 "STRUCTURAL STEEL (LS)"
  4. ALL STEEL COMPONENTS AND FASTENERS SHALL BE GALVANIZED IN ACCORDANCE WITH ASTM A123 OR A153
  5. ALL HOLES, NOTCHES, MORTISES ETC IN GLULAM MEMBERS TO BE MADE PRIOR TO PRESERVATIVE AND FIRE RETARDANT TREATMENTS. ALL MODIFICATIONS MADE IN THE FIELD SHALL BE RETREATED PRIOR TO INSTALLATION
  6. ALL MODIFICATIONS TO EXISTING OR NEW TIMBER MEMBERS MADE IN THE FIELD SHALL BE APPROVED BY THE ENGINEER PRIOR TO BEING MADE. ALL MODIFICATIONS WILL BE TREATED WITH PRESERVATIVE AND FIRE RETARDANT AT TIME OF INSTALLATION



TYPICAL POSITION AT FB 1 AND FB 9  
**PLAN VIEW**



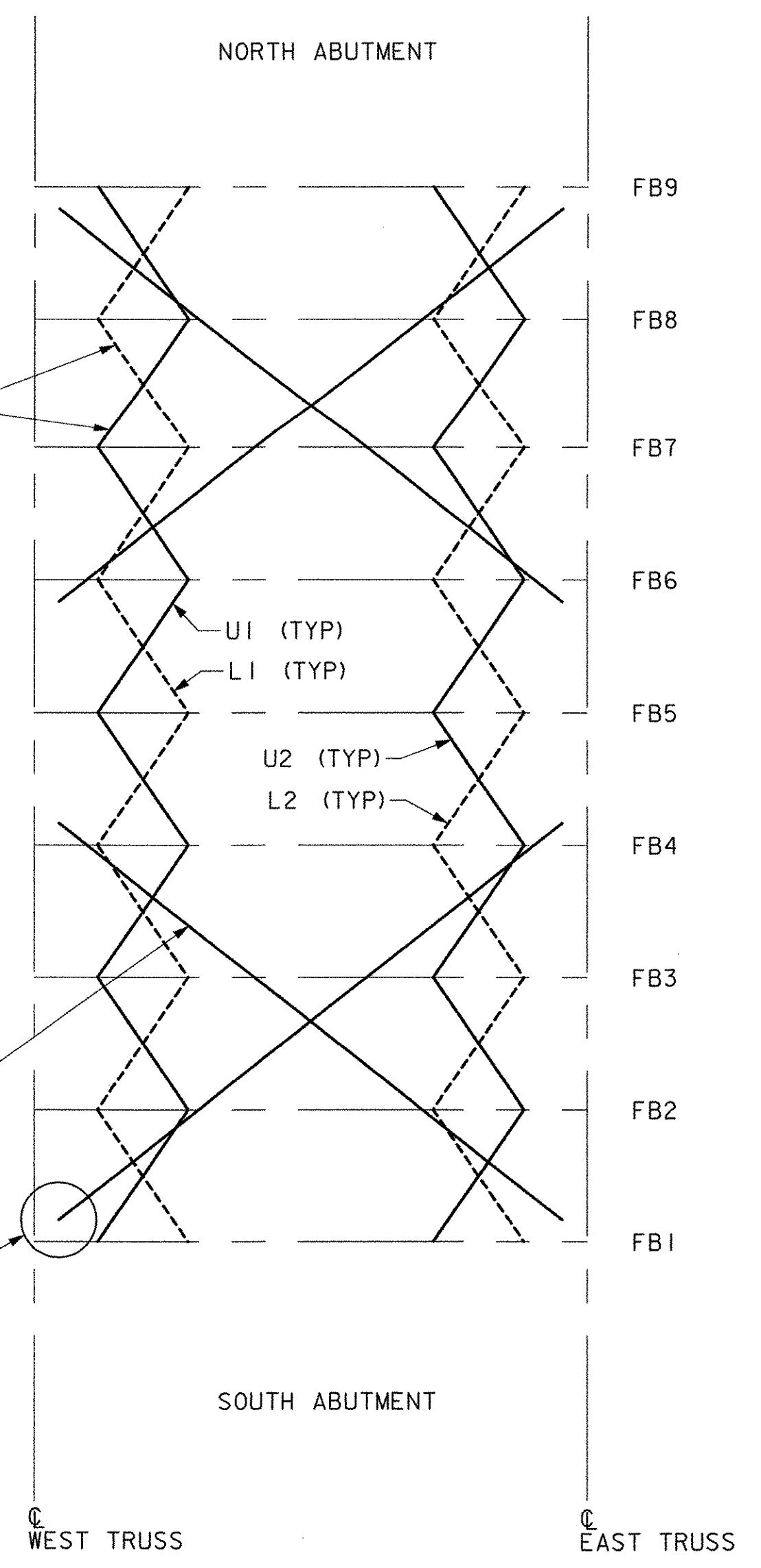
**SECTION D-D LOWER LATERAL BRACING CONNECTION**  
SCALE: 1" = 1'

- UI = UPPER X-BRACE 1
- U2 = UPPER X-BRACE 2
- L1 = LOWER X-BRACE 1
- L2 = LOWER X-BRACE 2

REINSTALL X-BRACING AT DIFFERENT ANGLE THAN EXISTING. MODIFY TENONS AT EACH END TO FIT MORTISE IN NEW FLOORBEAM (TYP)

INSTALL NEW 7/8" Ø THREADED ROD LATERAL BRACING (TYP)

LATERAL BRACING CONNECTION SEE DETAIL THIS SHEET



**LOWER LATERAL BRACING AND 'X-BRACING'**  
SCALE: 1" = 10'

**STATE OF VERMONT AGENCY OF TRANSPORTATION**

Town Of	PITTSFORD, VT	Bridge No.	31
Highway No.	ELM STREET (TH13)	Log Sta.	
		Surv. Sta.	
COOLEY COVERED BRIDGE REHABILITATION			
FLOORBEAM AND BRACING DETAILS			
Designed By	J. MESSIER	Drawn By	J. MESSIER
Checked By	Date	Bridge Design Supervisor	Date
E. ALLEN RANDALL	01/03/03		
PROJECT	PITTSFORD	PROJECT NO.	BHO 1443 (36)
I.G.C. Info.			
Bridge Sheet No.		Sheet	10 of 15

