

EXISTING BRIDGE 20 DATA
 SUPERSTRUCTURE: STEEL ROLLED BEAMS/WOOD PLANK DECK
 SUBSTRUCTURE: LAID UP STONE/RETRO STEEL BEAM ABUTMENTS
 BRIDGE WIDTH: 3.1 METERS (10 FEET)
 ROADWAY WIDTH: 3.1 METERS (10 FEET)
 BRIDGE LENGTH: 4.6 METERS (15 FEET)
 CLEAR SPAN: 3.4 METERS (11 FEET)
 CLEAR HEIGHT: 1.1 METERS (3.5 FEET)

HD STEEL BEAM GUARDRAIL, GALVANIZED
 STA I+206.623 LT - STA I+217.378 LT
 STA I+207.435 RT - STA I+219.316 RT
 STA I+228.273 LT - STA I+235.393 LT
 STA I+231.294 RT - STA I+239.249 RT

BRIDGE RAILING, GALVANIZED
 HD STEEL BEAM/FASCIA MOUNTED
 STA I+217.378 LT - STA I+228.273 LT
 STA I+219.316 RT - STA I+231.294 RT

PIPE OPTION
 STA I+243.203 LT - STA I+254.175 LT
 STA I+241.203 LT

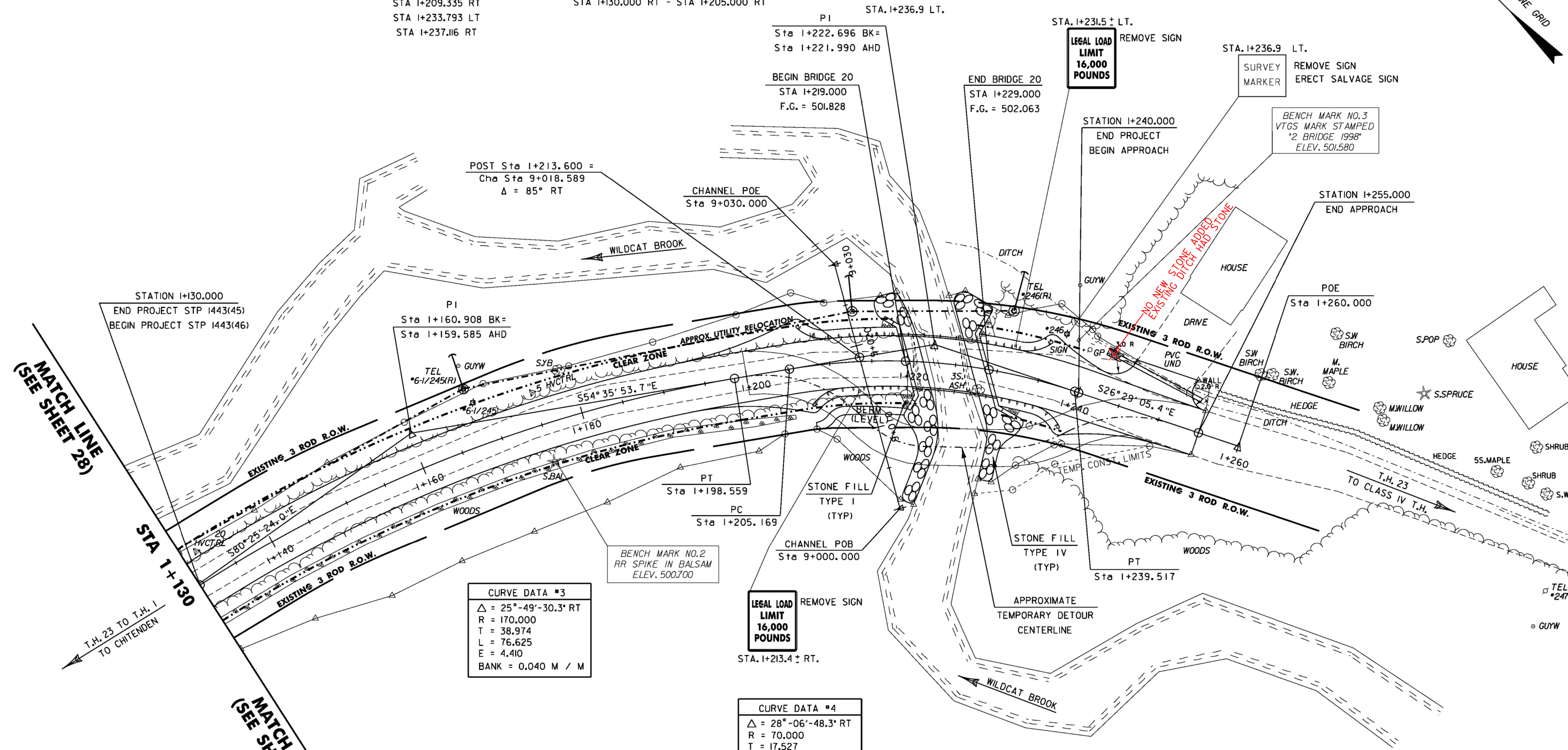
CONSTRUCT BERM
 STA I+207.400 (+/-) RT - STA I+219.300 RT

ERECTING SALVAGED SIGNS
 STA. I+236.9 LT.

ANCHOR FOR STEEL BEAM RAIL
 STA I+208.340 LT
 STA I+209.335 RT
 STA I+233.793 LT
 STA I+237.116 RT

CONSTRUCT DITCH
 (STONE FILL TYPE I)
 STA I+30.000 RT - STA I+205.000 RT

REMOVING SIGNS
 STA. I+213.4 ± RT.
 STA. I+231.5 ± LT.
 STA. I+236.9 LT.



MATCH LINE
 (SEE SHEET 28)

MATCH LINE
 (SEE SHEET 28)

CURVE DATA #3
 $\Delta = 25^\circ - 49' - 30.3''$ RT
 R = 170.000
 T = 38.974
 L = 76.625
 E = 4.410
 BANK = 0.040 M / M

CURVE DATA #4
 $\Delta = 28^\circ - 06' - 48.3''$ RT
 R = 70.000
 T = 17.527
 L = 34.347
 E = 2.161
 BANK = 0.040 M / M

LEGAL LOAD LIMIT
 16,000 POUNDS

LEGAL LOAD LIMIT
 16,000 POUNDS

NOTES
 1.) RELOCATED TELEPHONE POLES ARE DENOTED BY AN (R)
 2.) SEE SHEET 9 FOR DRAINAGE DETAILS

BRIDGE 20 LAYOUT SHEET

PROJECT NAME: CHITTENDEN
 PROJECT NUMBER: STP 1443(46)
 FILE NAME: /96J236/str/sj236bdr.dgn
 PLOT DATE: 14-AUG-2009
 PROJECT MANAGER: C. CARLSON
 DRAWN BY: STR
 DESIGNED BY: K. UPMAL
 CHECKED BY: C. CARLSON
 SHEET 59 OF 81

