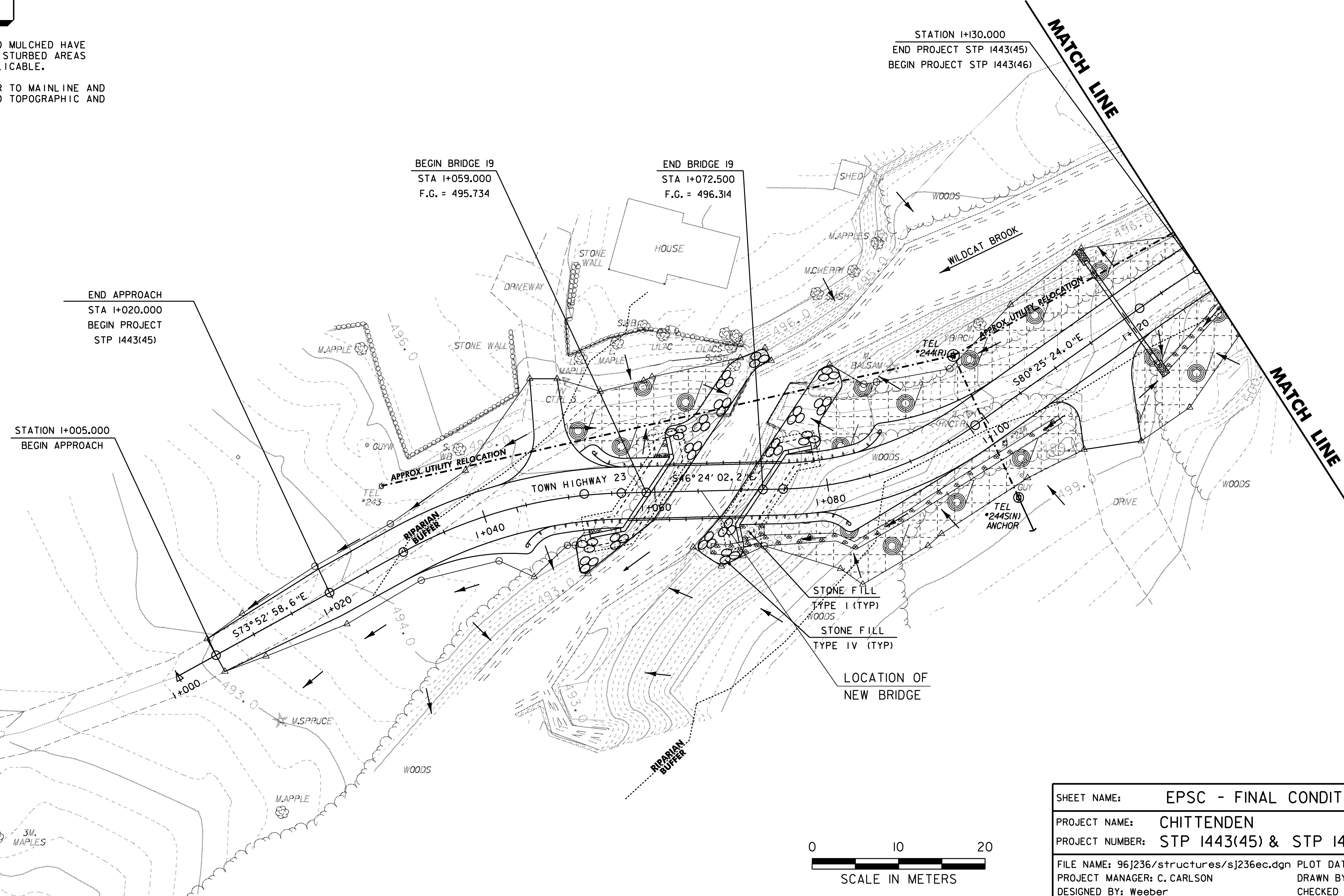


| LEGEND | |
|--------|------------------------------|
| | EDGE OF EXISTING ROAD |
| | WOODED AREA |
| | STONE WALL |
| | EDGE OF WATER |
| | SURFACE WATER FLOW DIRECTION |
| | CONTOUR LINES |
| | TEMPORARY EROSION MATTING |
| | STONE FILL TYPE IV |

FOR CLARITY, AREAS TO BE SEEDED AND MULCHED HAVE NOT BEEN INDICATED, HOWEVER, ALL DISTURBED AREAS SHALL BE SEEDED AND MULCHED AS APPLICABLE.

EXISTING CONTOURS ARE SHOWN. REFER TO MAINLINE AND CHANNEL CROSS SECTIONS FOR PROPOSED TOPOGRAPHIC AND DRAINAGE INFORMATION.



END APPROACH
STA 1+020.000
BEGIN PROJECT
STP 1443(45)

STATION 1+005.000
BEGIN APPROACH

BEGIN BRIDGE 19
STA 1+059.000
F.G. = 495.734

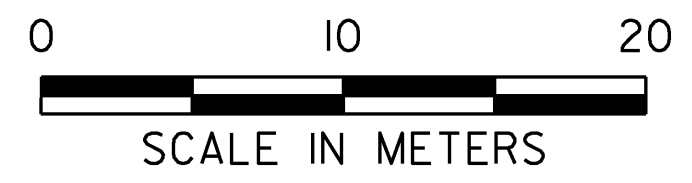
END BRIDGE 19
STA 1+072.500
F.G. = 496.314

STATION 1+130.000
END PROJECT STP 1443(45)
BEGIN PROJECT STP 1443(46)

STONE FILL
TYPE I (TYP)
WOODS

STONE FILL
TYPE IV (TYP)

LOCATION OF
NEW BRIDGE



| | |
|------------------|-------------------------------|
| SHEET NAME: | EPSC - FINAL CONDITIONS I |
| PROJECT NAME: | CHITTENDEN |
| PROJECT NUMBER: | STP 1443(45) & STP 1443(46) |
| FILE NAME: | 96J236/structures/sj236ec.dgn |
| PROJECT MANAGER: | C. CARLSON |
| DESIGNED BY: | Weeber |
| PLOT DATE: | 24-AUG-2009 |
| DRAWN BY: | W. LAMMER |
| CHECKED BY: | C. CARLSON |
| SHEET 15 | OF 81 |