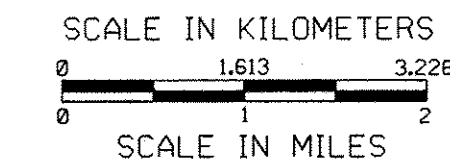
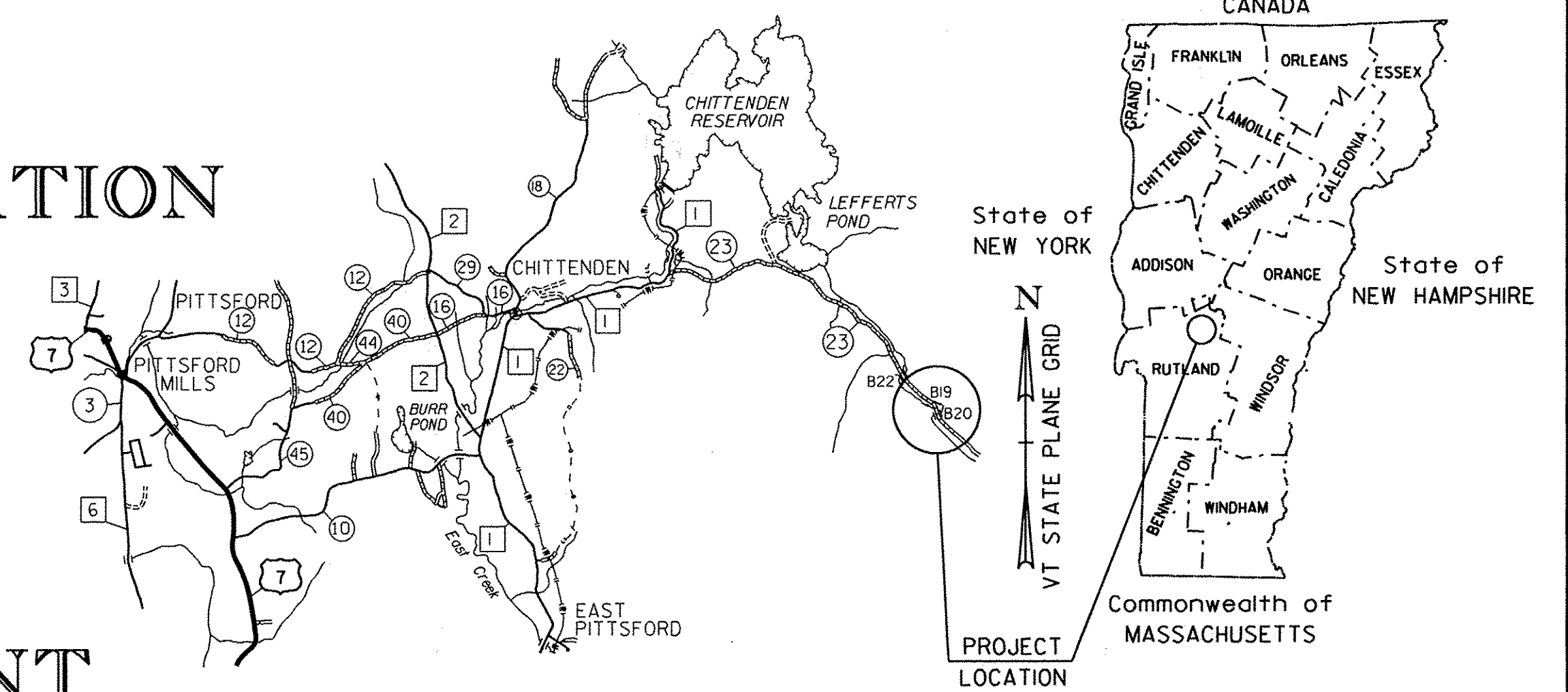


INDEX OF SHEETS  
SEE SHEET 2 FOR INDEX  
OF SHEETS AND LIST OF  
STANDARDS

# STATE OF VERMONT AGENCY OF TRANSPORTATION



### RECORD PLANS

CONTRACTOR: TREMBLAY CONSTRUCTION, LLC- WASHINGTON, VT

RESIDENT ENGINEER: NATHAN COVEY

CONSTRUCTION BEGAN: APRIL 14, 2010

CONSTRUCTION COMPLETE: OCTOBER 25, 2010

RECORD PLANS BY: NATHAN COVEY & AMOS KEMPTON

I HEREBY CERTIFY THAT ALL THE CONSTRUCTION REQUIRED BY THIS SET OF DRAWINGS HAS BEEN ACCOMPLISHED AS INDICATED HEREIN.

BY *Nathan Covey* RESIDENT ENGINEER

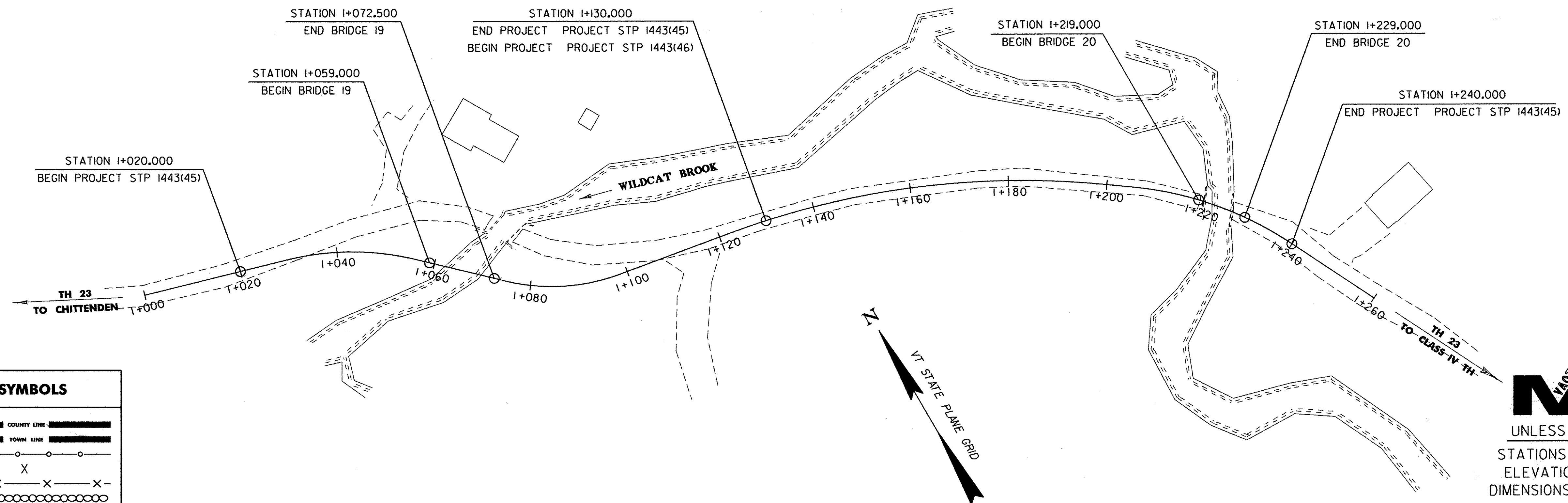
DATE 8/25/11

NOTE: Any further information concerning final quantities, amounts or other details relative to this project may be found at Central Files in the electronic archives.

## PROPOSED IMPROVEMENT BRIDGE PROJECT TOWN OF CHITTENDEN COUNTY OF RUTLAND

CHITTENDEN STP 1443(45)  
ROUTE NO:T.H. 23 (LOCAL) BRIDGE 19  
SEE SHEET 22 FOR PROJECT LOCATION AND DESCRIPTION

CHITTENDEN STP 1443(46)  
ROUTE NO:T.H. 23 (LOCAL) BRIDGE 20  
SEE SHEET 53 FOR PROJECT LOCATION AND DESCRIPTION



### CONVENTIONAL SYMBOLS

COUNTY LINE	
TOWN LINE	
LIMITS OF ACCESS	
POINT OF ACCESS	
FENCE LINE	
STONE WALL	
TRAVELED WAY	
GUARD RAIL	
RAILROAD	
SURVEY LINE	
CULVERT	
POWER POLE	
TELEPHONE POLE	
TREES	
CONTROL OF ACCESS	
PROPERTY LINE	
R.O.W. TAKING LINE	
SLOPE RIGHTS	
TOP OF CUT	
TOE OF SLOPE	

SURVEYED BY : L. ORVIS  
SURVEYED DATE : AUGUST 1998

DATUM  
VERTICAL NAVD 88  
HORIZONTAL NAD 83/92



THESE PLANS ARE SUBJECT TO SUCH ENGINEERING CHANGES AS MAY BE REQUIRED BY THE FEDERAL HIGHWAY ADMINISTRATION OR THE DIRECTOR OF PROGRAM DEVELOPMENT.

CONSTRUCTION IS TO BE CARRIED ON IN ACCORDANCE WITH THESE PLANS AND THE STANDARD SPECIFICATIONS FOR CONSTRUCTION DATED 2006, AS APPROVED BY THE FEDERAL HIGHWAY ADMINISTRATION ON JUNE 15, 2006 FOR USE ON THIS PROJECT, INCLUDING ALL SUBSEQUENT REVISIONS AND SUCH REVISED SPECIFICATIONS AND SPECIAL PROVISIONS AS ARE INCORPORATED IN THESE PLANS.

/str1/96j236/sj236bdr.dgn sj236.tli PLOTTED:13-AUG-2009



UNLESS NOTED OTHERWISE  
STATIONS ARE IN KILOMETERS  
ELEVATIONS ARE IN METERS  
DIMENSIONS ARE IN MILLIMETERS

DIRECTOR OF PROGRAM DEVELOPMENT

APPROVED *[Signature]* DATE 8/14/09

PROJECT MANAGER : C. CARLSON

PROJECT NAME : CHITTENDEN

PROJECT NUMBER : STP1443 (45)

STP1443 (46)

SHEET 1 OF 81 SHEETS