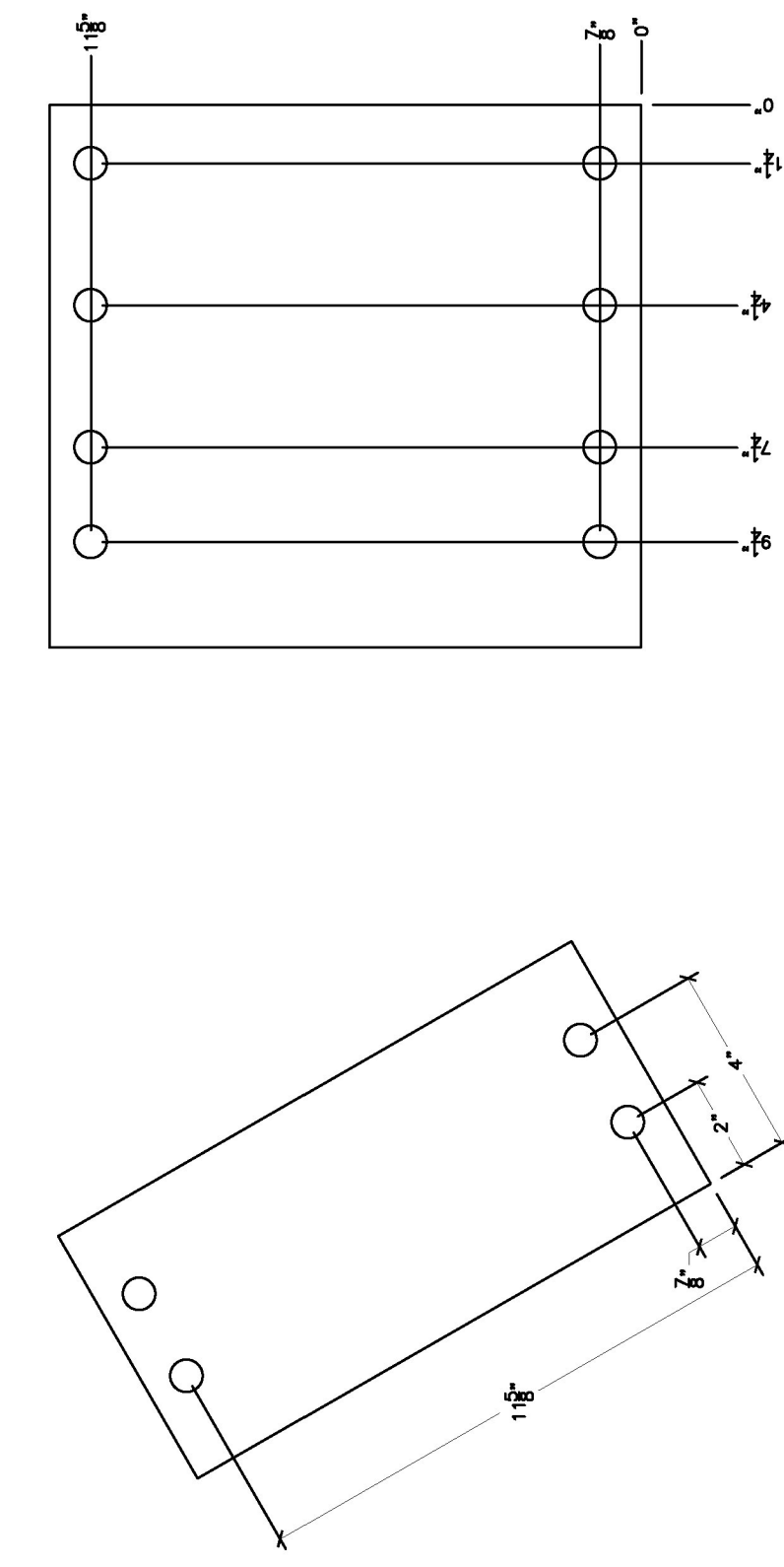
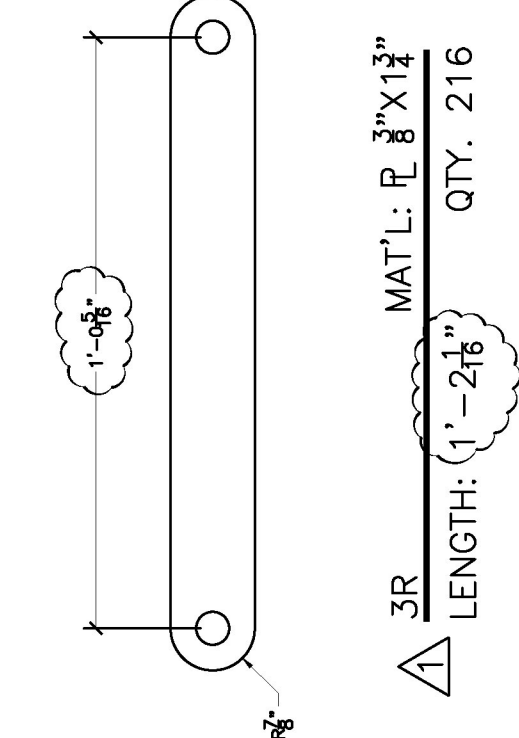


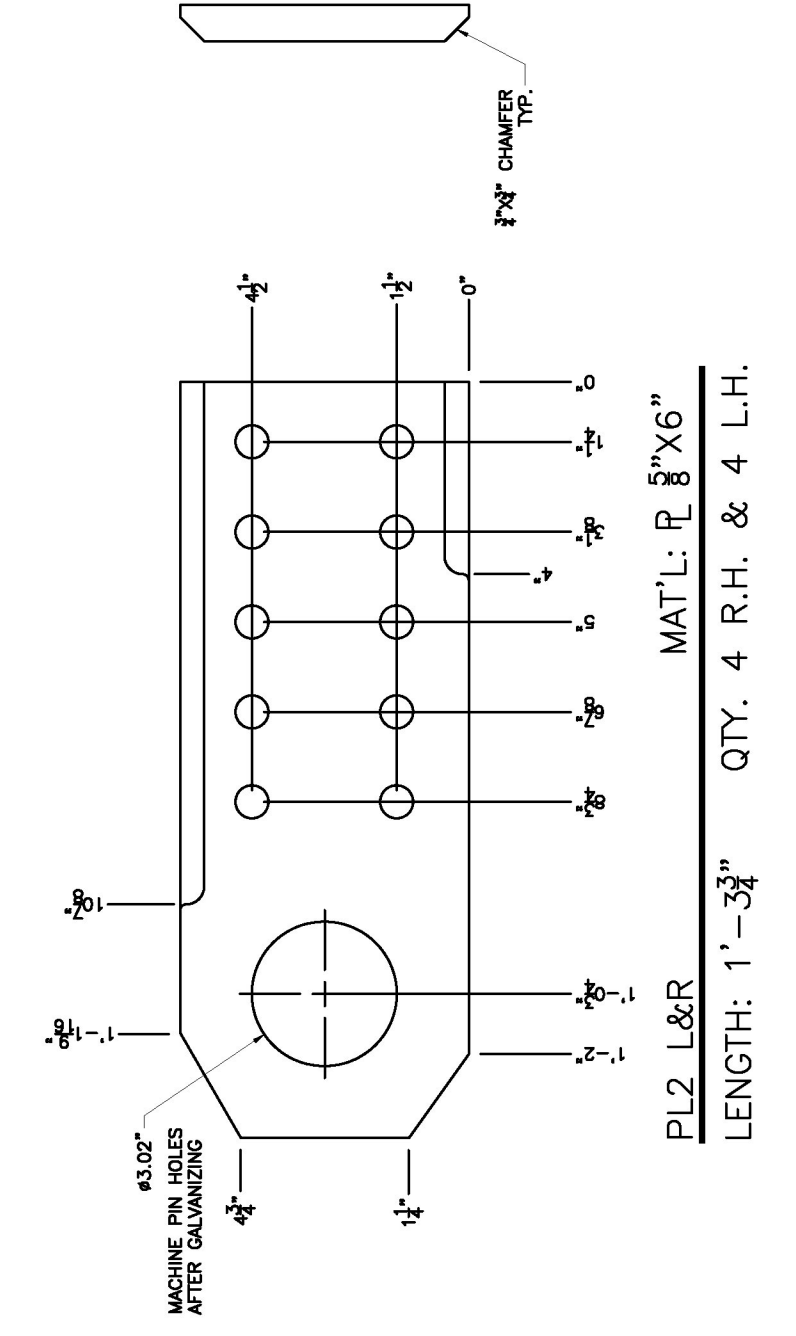
EC2
 LENGTH: 20'-4 1/8"
 MAT'L CBX11.5
 QTY. 4



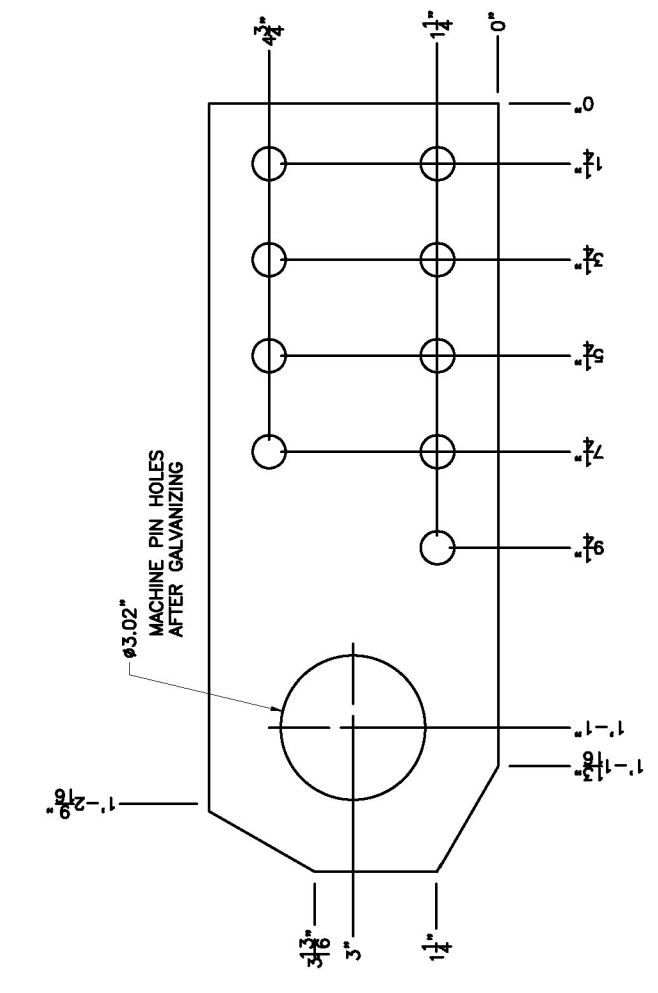
PL1
 LENGTH: 1'-5 5/8"
 MAT'L: PL 8"X1'-0 1/2"
 QTY. 4



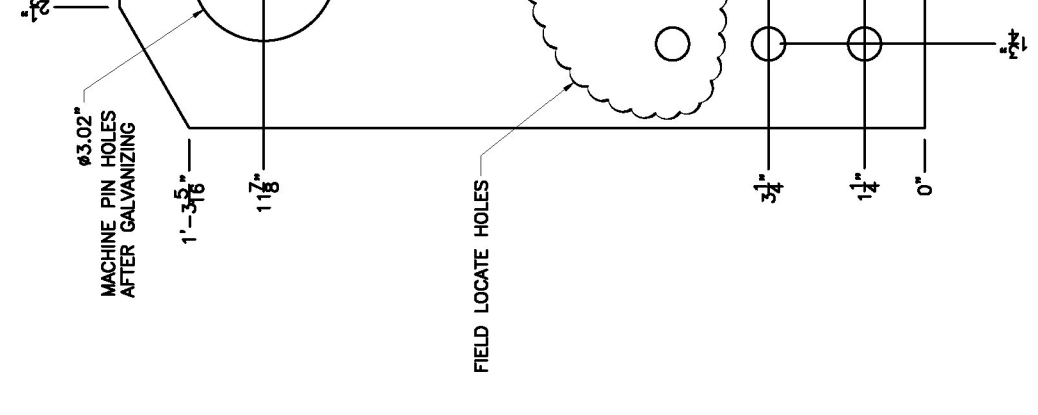
3R
 LENGTH: 1'-2 1/8"
 MAT'L: PL 8"X1 1/2"
 QTY. 216



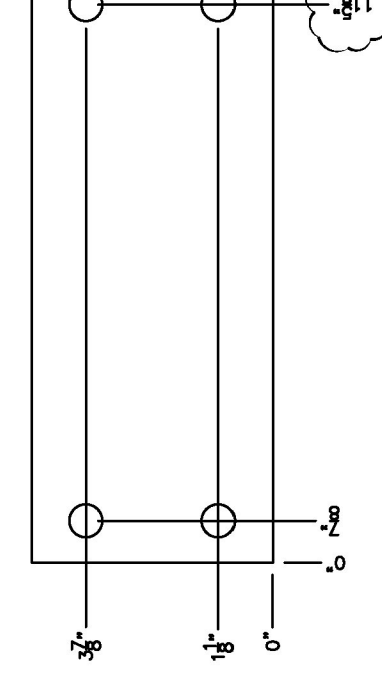
PL2 L&R
 LENGTH: 1'-3 3/4"
 QTY. 4 R.H. & 4 L.H.
 MAT'L: PL 8"X6"



PL4
 LENGTH: 1'-4"
 MAT'L: PL 8"X6"
 QTY. 8



PL3 (FCM)
 LENGTH: 1'-4 1/2"



M1
 LENGTH: 1'-0 1/2"
 MAT'L: PL 8"X5"
 QTY. 28

Vermont Agency of Transportation

RECEIVED

CK'D BY TCF OK'D BY KMH
 October 5, 2012

RESUBMIT BY KMH APPROVED X
 DATE 10/5/2012

REV. NO.	DATE:
Δ	10/3/2012

R.B.