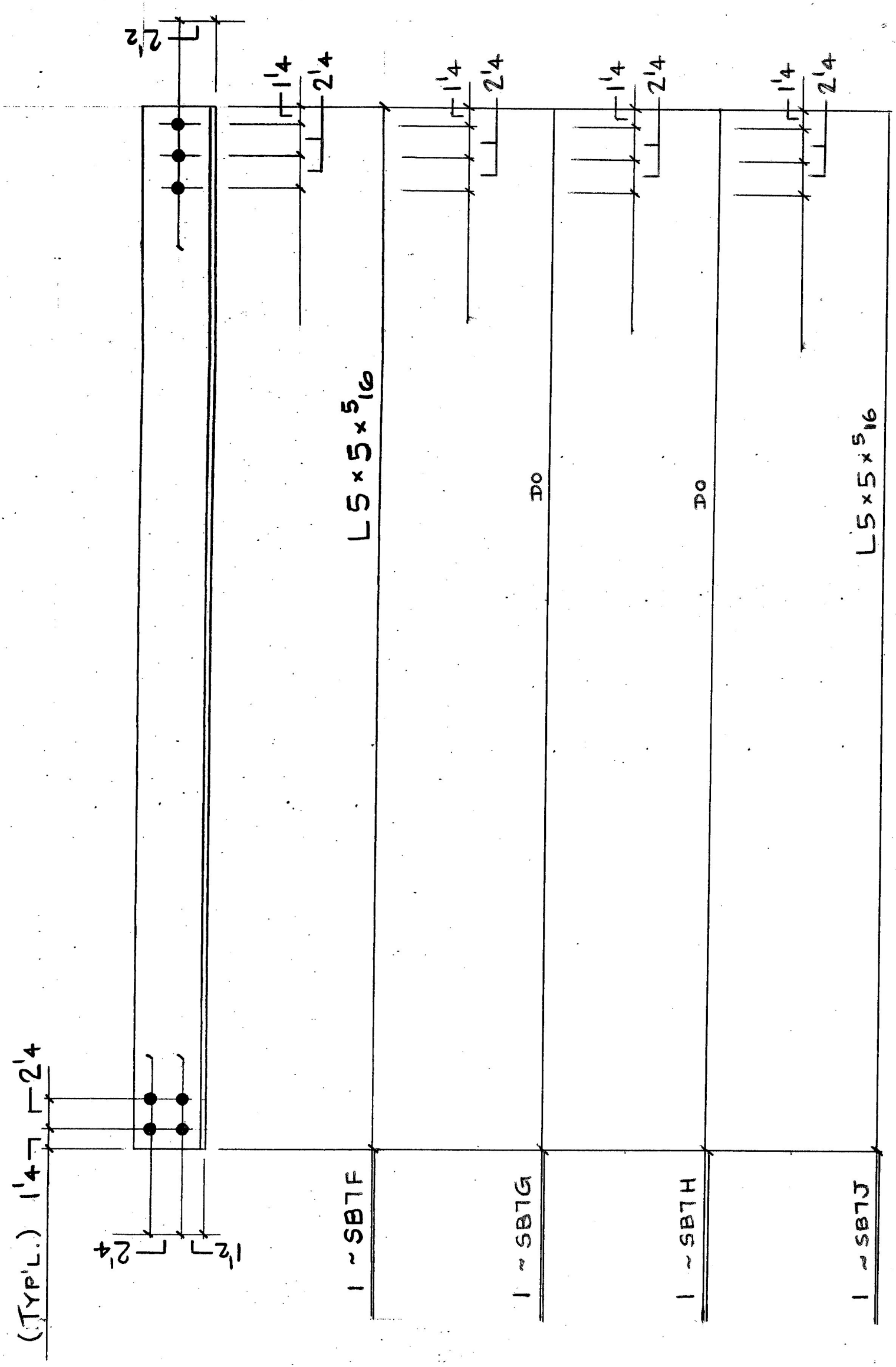
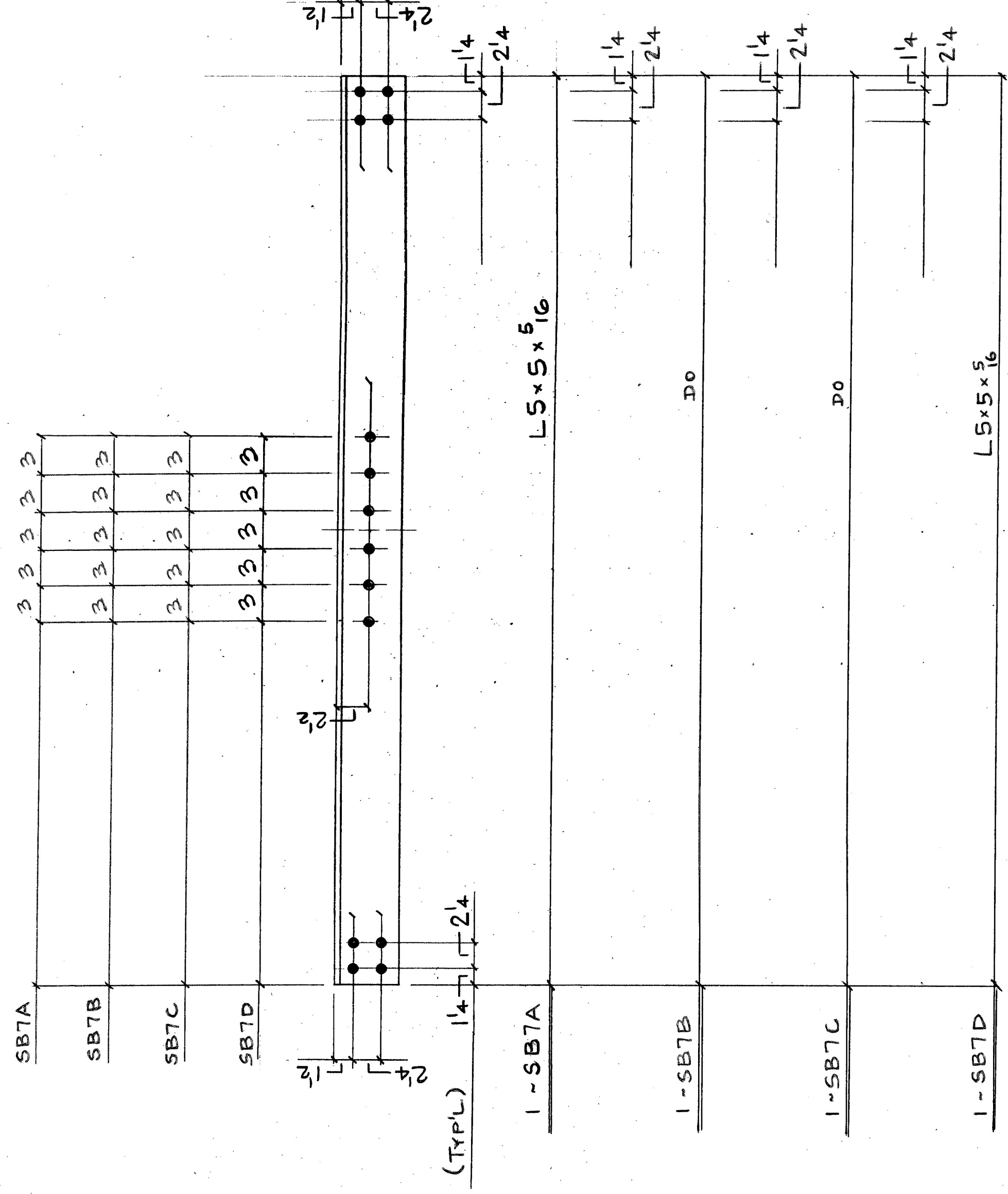


The replacement of members EPI, U1-U2, U2-U1', and EPI' necessitates different details than shown on this sheet. See Sheets 10-13 (1/4-4/4) for modifications.



FIELD LOCATE MISSING HOLE DIMENSIONS HOLES TO BE SHOP DRILLED. FIELD TO SUPPLY CUT LENGTHS FOR ANGLES. BAYS DIFFER SLIGHTLY

Note - The original shipment of pieces will not include the angles before the pieces are assembled, without these pieces, angles. Deck bracing connection plates and dimensions shall be angles.

