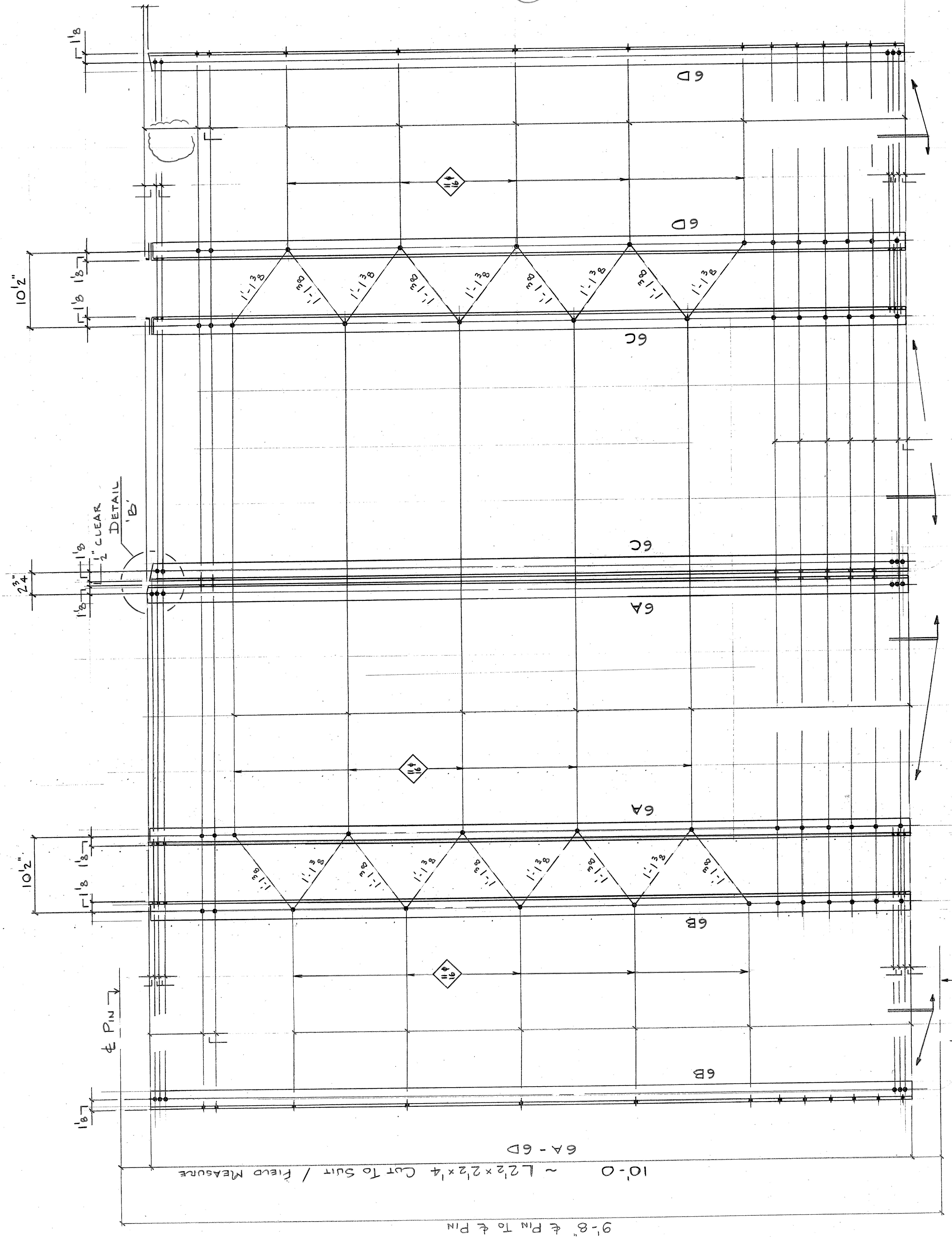


The replacement of members EPI, U1-U2, U2-U1', and EPI' necessitates different details than shown on this sheet. See Sheets 10-13 (1/4-4/4) for modifications.



Vermont Agency of Transportation

RECEIVED

CK'D BY TCF OK'D BY KMH

November 9, 2011

RESUBMIT BY KMH

APPROVED As Noted

DATE 9/10/2012

UPRIGHT VERTICAL ASSEMBLY 2 REG. e L 3U3 TRUSS A + L1U1 TRUSS B

2 ~ 6A L 2 1/2 x 2 1/4 x 1/4 x 10'-0

2 ~ 6B L 2 1/2 x 2 1/4 x 1/4 x 10'-0

2 ~ 6C L 2 1/2 x 2 1/4 x 1/4 x 10'-0

2 ~ 6D L 2 1/2 x 2 1/4 x 1/4 x 10'-0