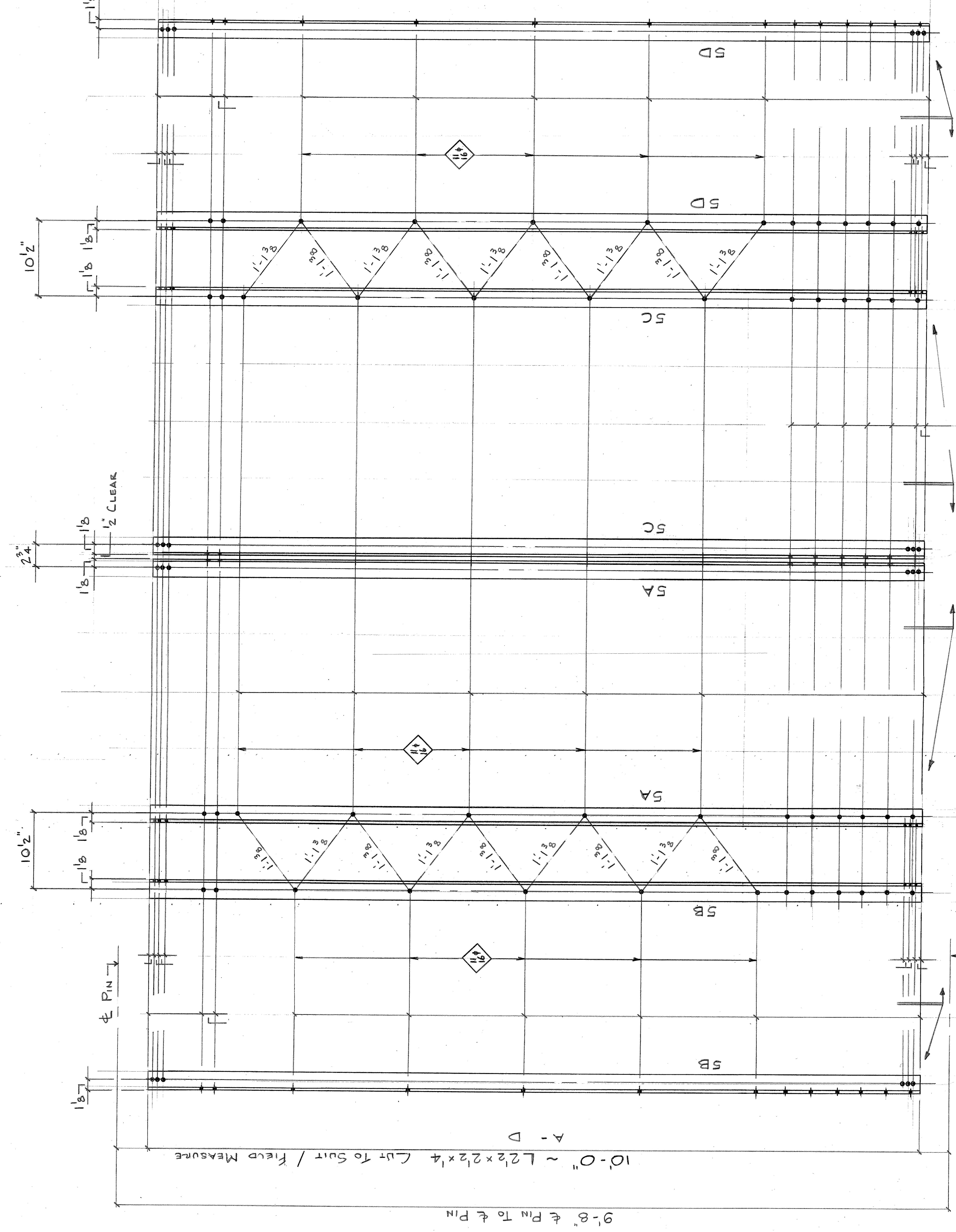


The replacement of members EPI, U1-U2, U2-U1, and EPI necessitates different details than shown on this sheet. See Sheets 10-13 (1/4-4/4) for modifications.



UPRIGHT VERTICAL ASSEMBLY 2 REQ'D & L2U2 TRUSS A + B

2 ~ SA	L 2 1/2 x 2 1/2 x 1/4 x 10'-0
2 ~ SB	L 2 1/2 x 2 1/2 x 1/4 x 10'-0
2 ~ SC	L 2 1/2 x 2 1/2 x 1/4 x 10'-0
2 ~ SD	L 2 1/2 x 2 1/2 x 1/4 x 10'-0

Vermont Agency of Transportation
RECEIVED

CK'D BY TCF OK'D BY KMH
November 9, 2011

RESUBMIT APPROVED As Noted
BY KMH DATE 9/10/2012