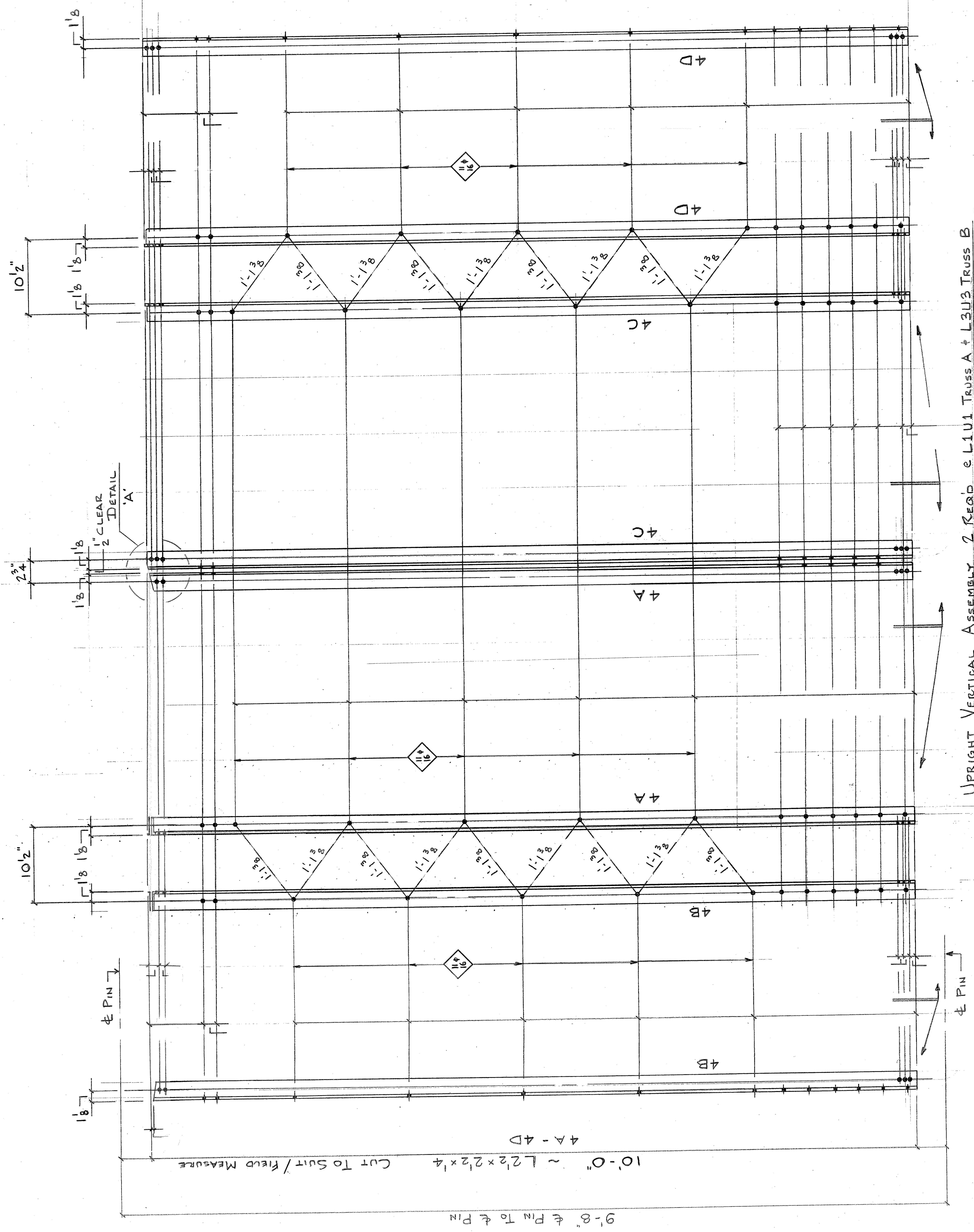


The replacement of members BP1, U1-U2, U2-U1', and BP1' necessitates different details than shown on this sheet. See Sheets 10-13 (1/4-4/4) for modifications.



UPRIGHT VERTICAL ASSEMBLY 2 REQ'D @ L1U1 TRUSS A + L3U3 TRUSS B

- 2 ~ 4A L 2 1/2 x 2 1/2 x 1/4 x 10'-0
- 2 ~ 4B L 2 1/2 x 2 1/2 x 1/4 x 10'-0
- 2 ~ 4C L 2 1/2 x 2 1/2 x 1/4 x 10'-0
- 2 ~ 4D L 2 1/2 x 2 1/2 x 1/4 x 10'-0

Vermont Agency of Transportation
RECEIVED

CK'D BY TCF OK'D BY KMH
November 9, 2011
RESUBMIT APPROVED As Noted
BY KMH DATE 9/10/2012

Minimum end and edge
Minimum end and edge