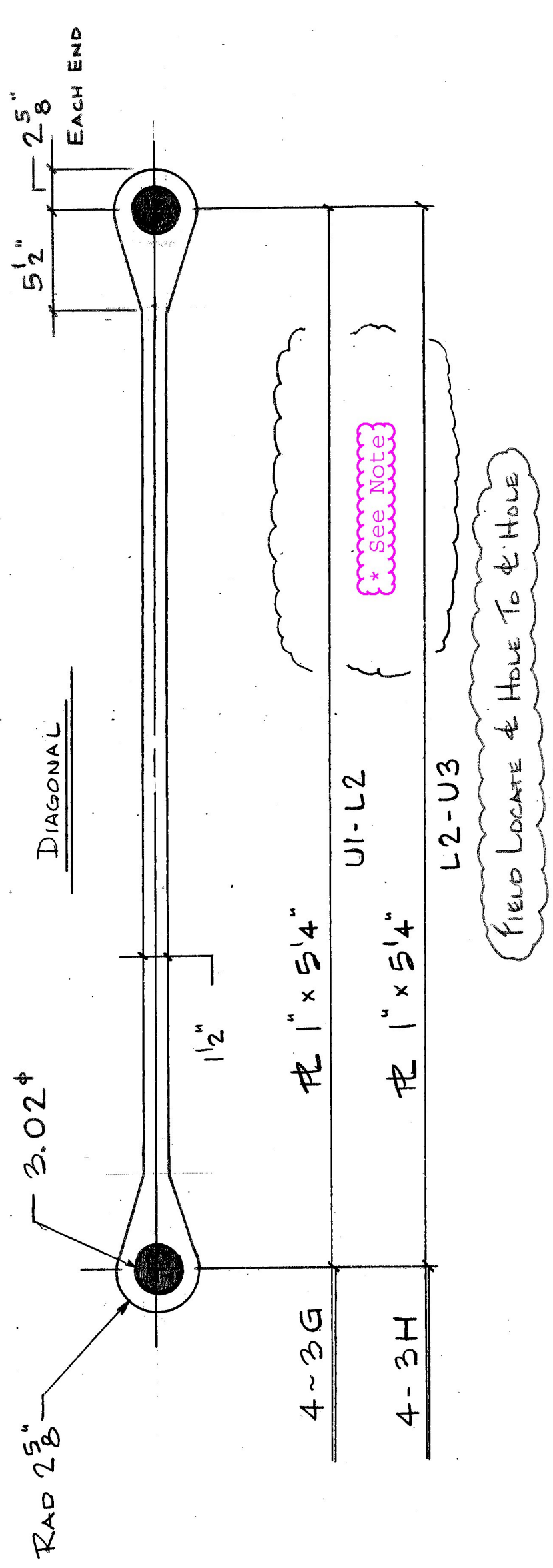
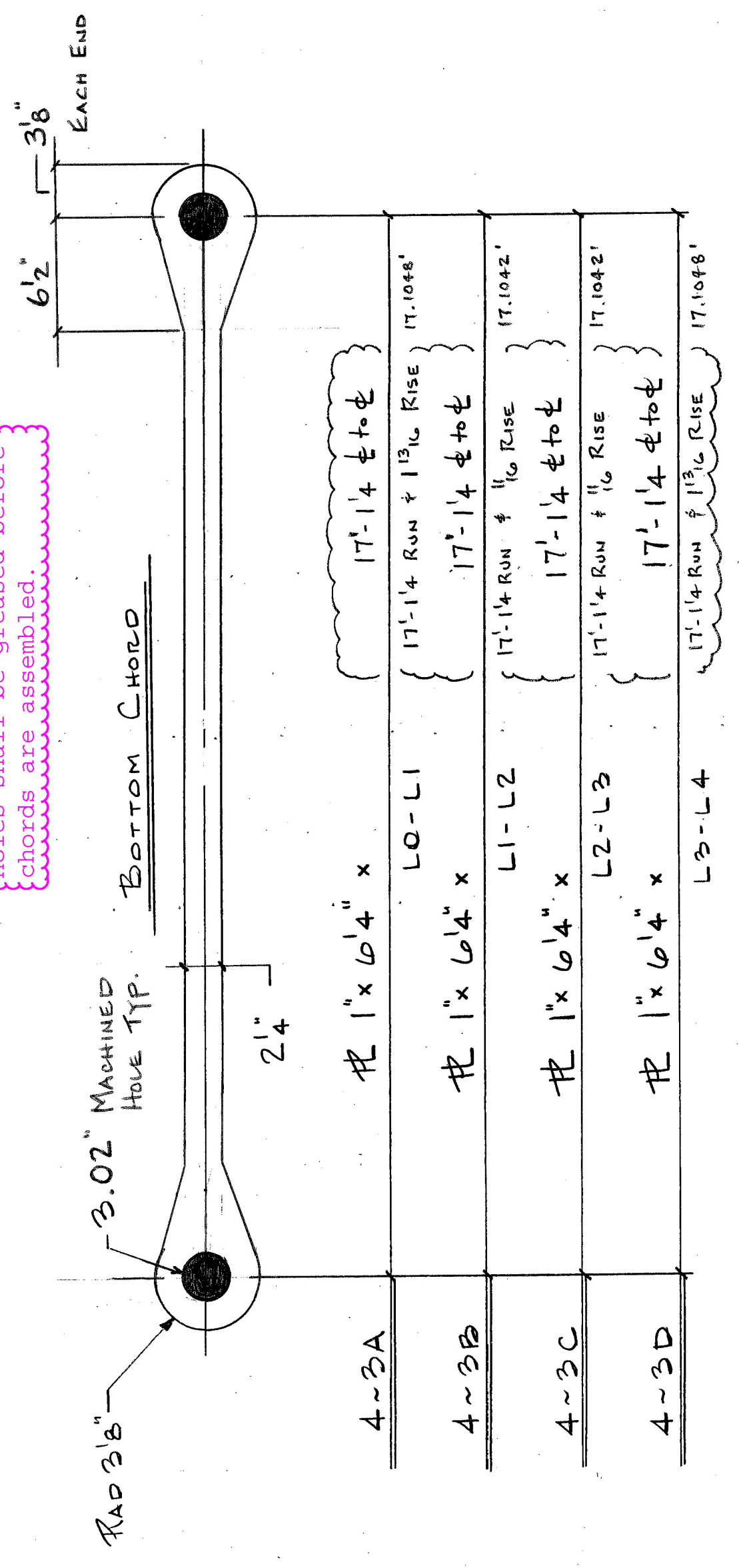
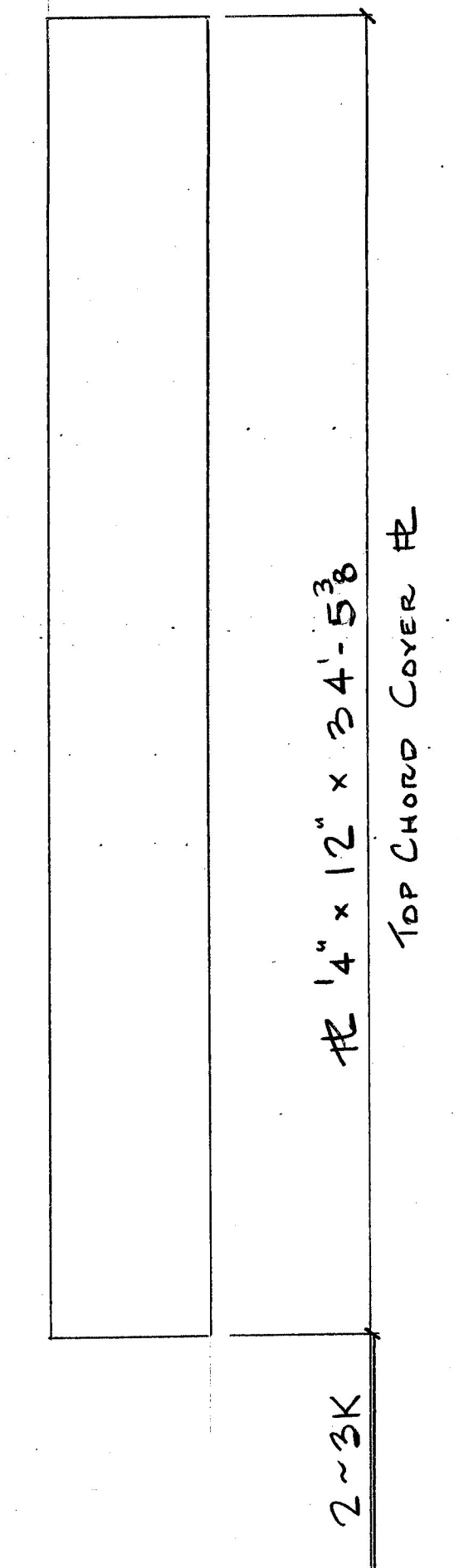


Holes shall be machined after galvanizing.  
Holes shall be greased before chords are assembled

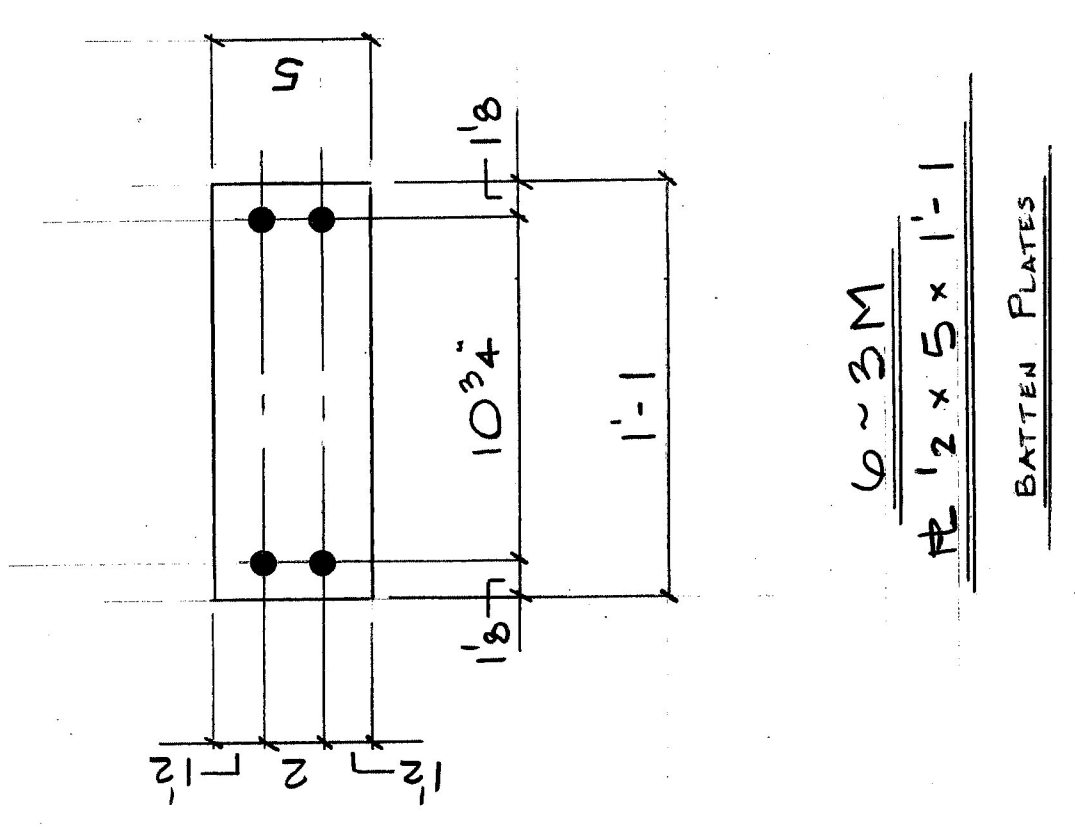


\* Note - Original shipment of pieces will not include 3G and 3H pieces. The truss shall be assembled, without these pieces, and the diagonal lengths determined before the pieces are fabricated.

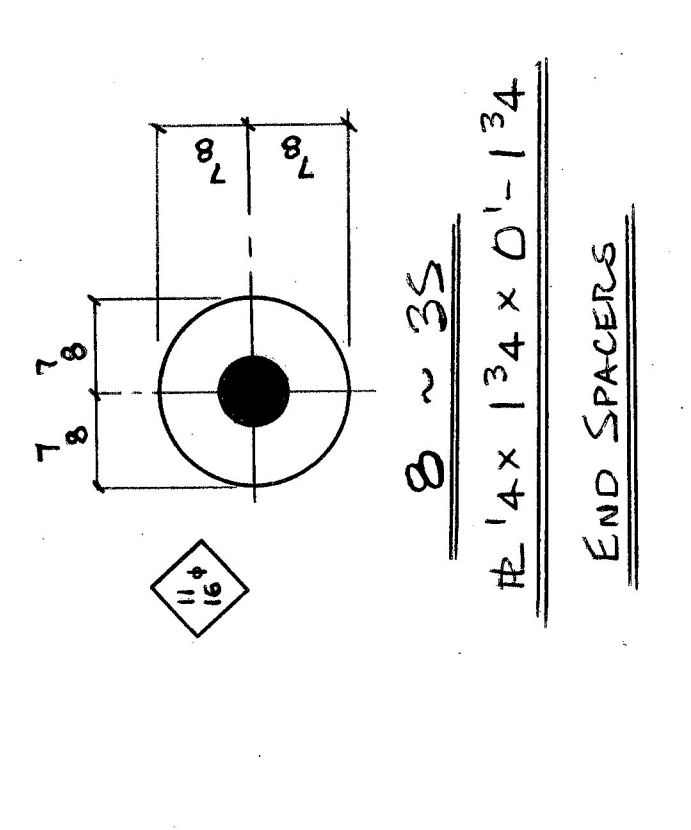
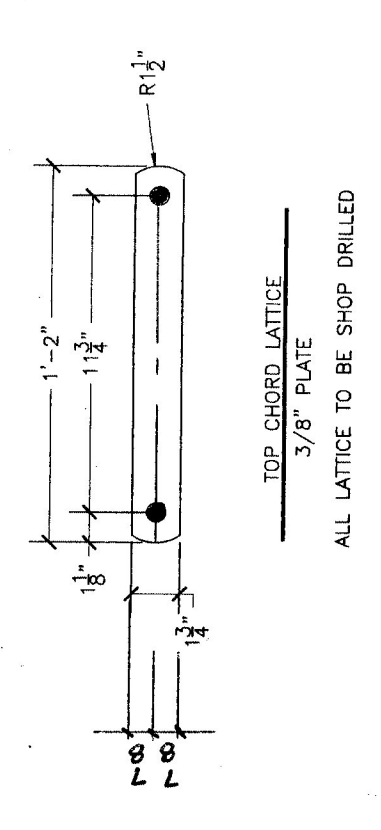
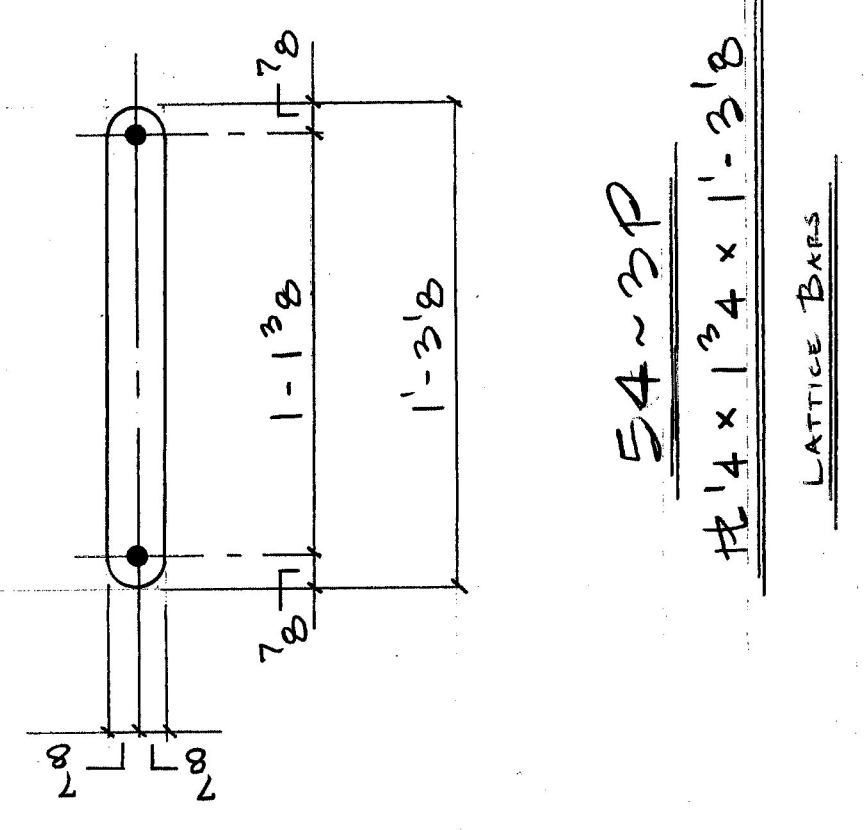
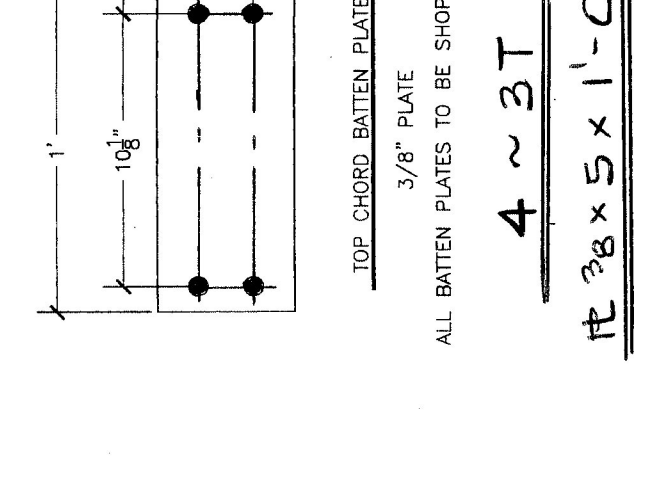
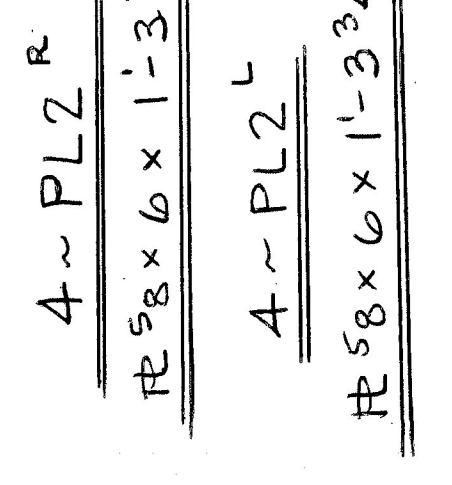


The replacement of members EPI, U1-U2, U2-U1, and EPI necessitates different details than shown on this sheet. See Sheets 10-13 (1/4-4/4) for modifications.

MACHINED PIN HOLE AFTER GALVANIZING



PL2  
QTY: 4 AS SHOWN (QTY 4 OPP. HAND)  
HOLE FOR 1" PIN TO BE SHOP DRILLED  
11/16" BOLT HOLES TO BE MATCH DRILLED IN PIN



PAINT NOTE:  
Steel will be Hot Dipped  
Intermediate Coat: Carboline 133  
Topcoat: Carboline 133  
All faying surfaces shall be hand wire brushed p

No post treatments c  
accelerate cooling w