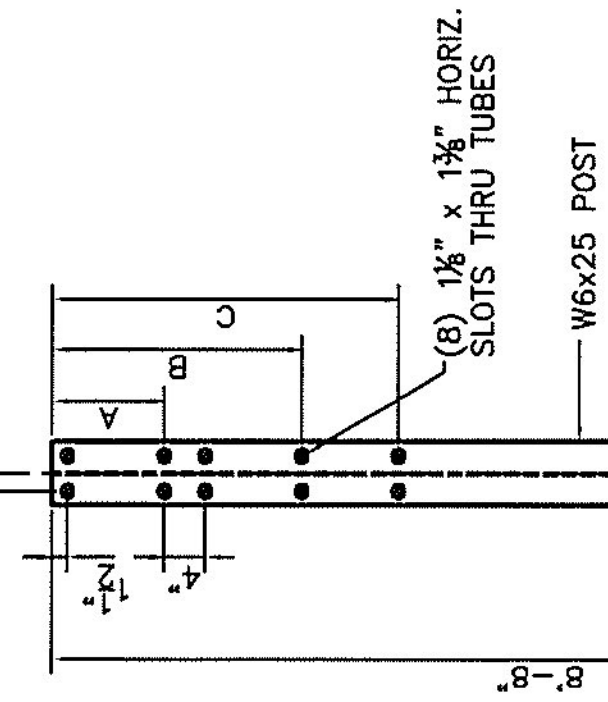


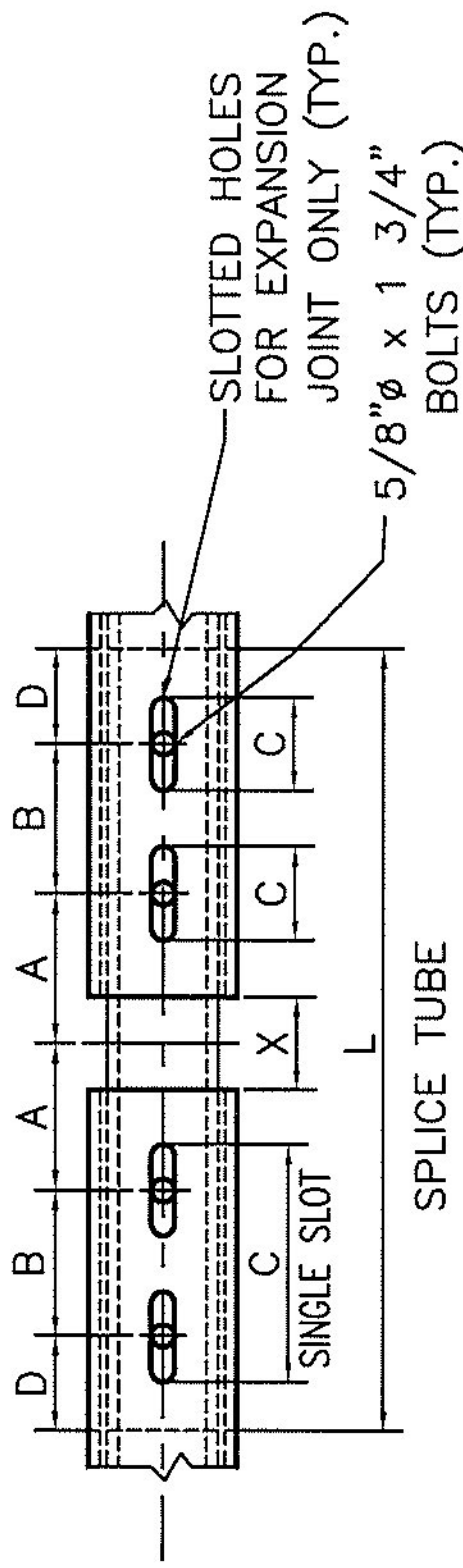
1/4" (typ.)



STEEL POST CHART

No.	A	B	C
#11	11.188"	2'-0.500"	2'-9.813"
#12	10.563"	1'-11.500"	2'-8.500"
#13	9.938"	1'-10.500"	2'-7.125"
#14	9.250"	1'-9.500"	2'-5.75"
#15	8.625"	1'-8.438"	2'-4.438"
#16	7.938"	1'-7.438"	2'-2.563"
#17	6.875"	1'-5.875"	2'-0.563"

STEEL POST

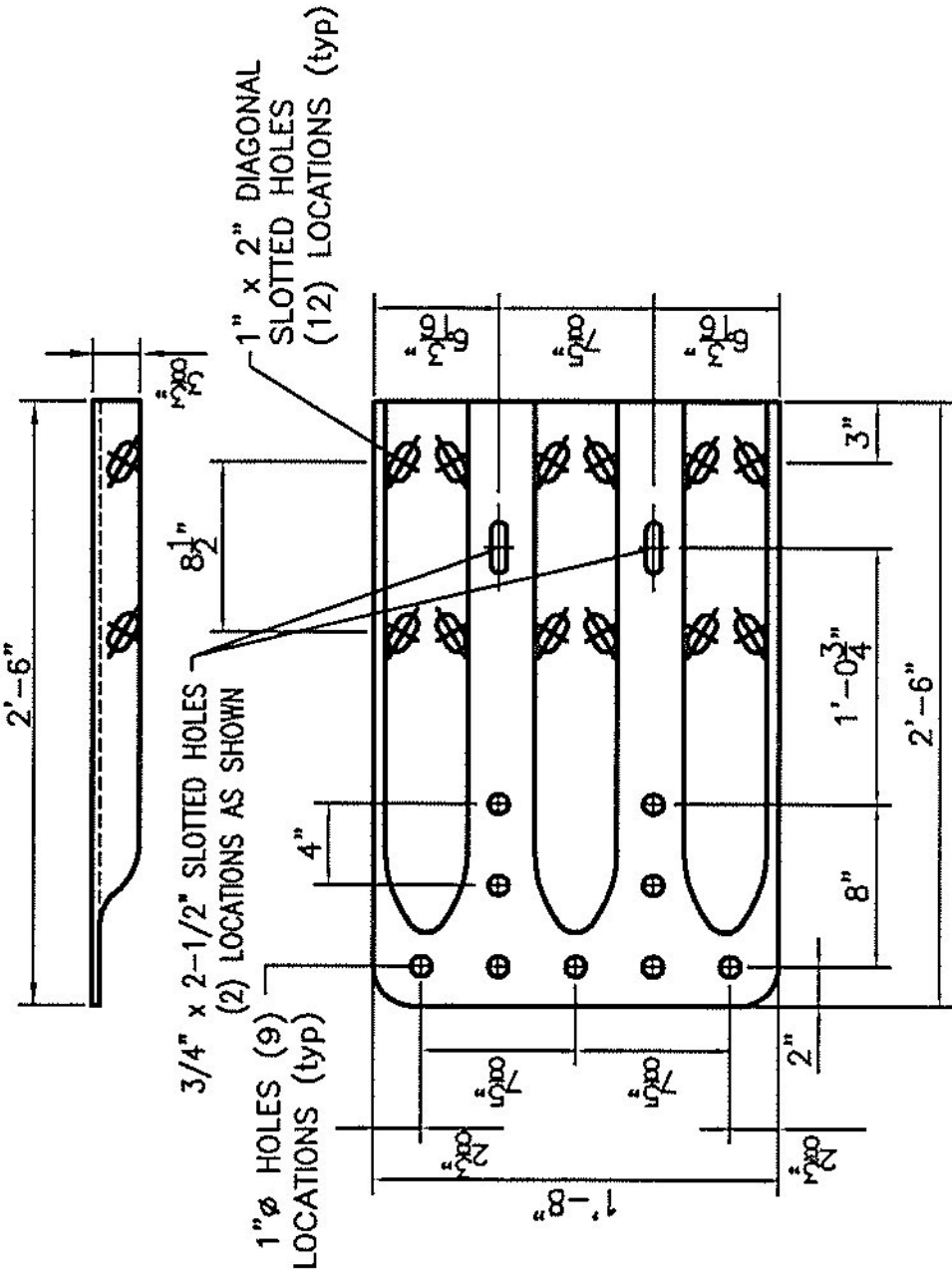


RAIL TUBE SPLICE AND RAIL EXPANSION JOINT DETAIL

SPLICE JOINT TABLE

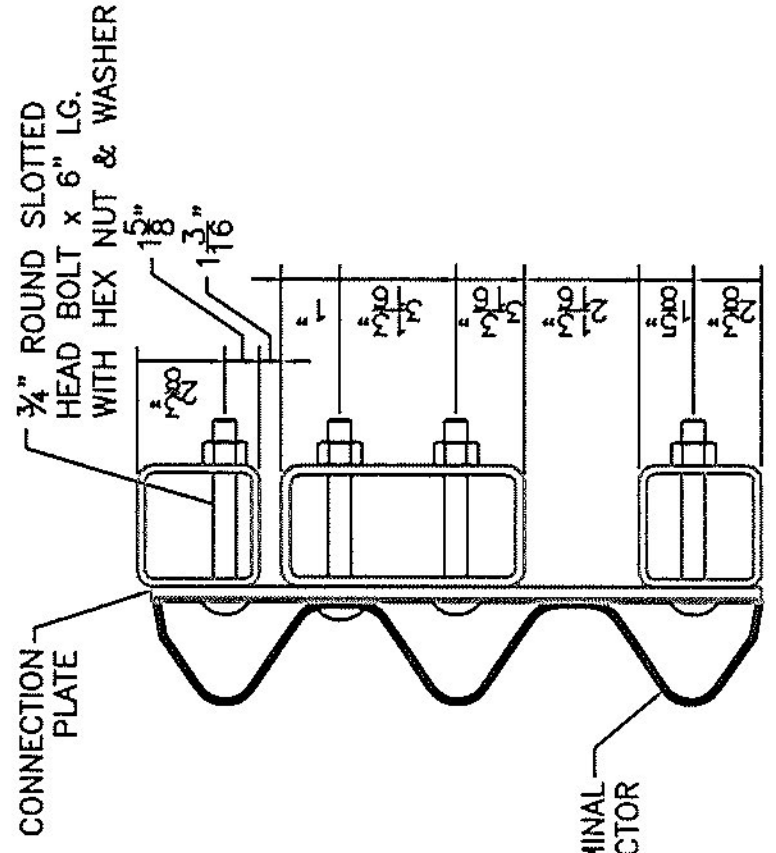
T	A	B	C	D	X	L
INTERIOR	4"	4"	2.5"	2"	.75"	1'-8"
≤3.25"	4"	4"	2.5"	2"	2.50"	1'-8"

T = TOTAL MOVEMENT

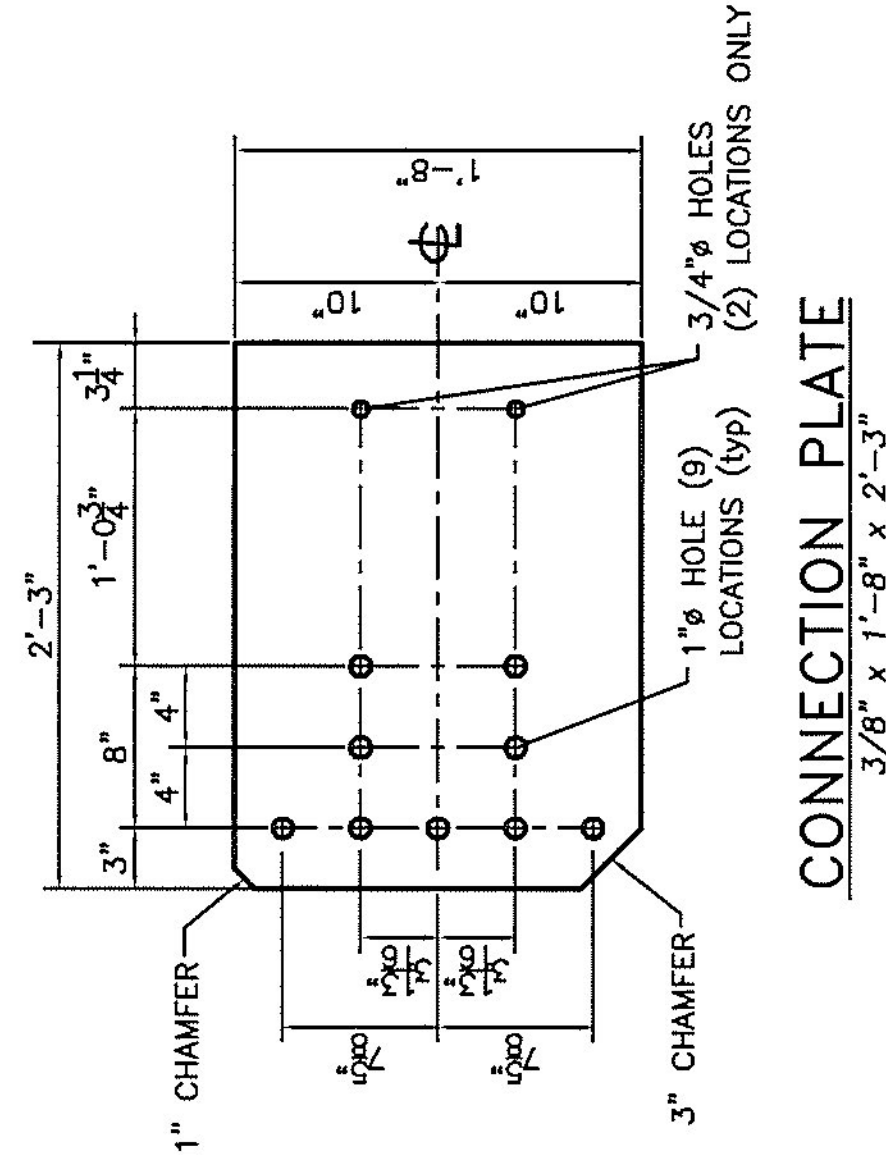


TERMINAL CONNECTOR

10 GAUGE (ASHITO M180 B2)

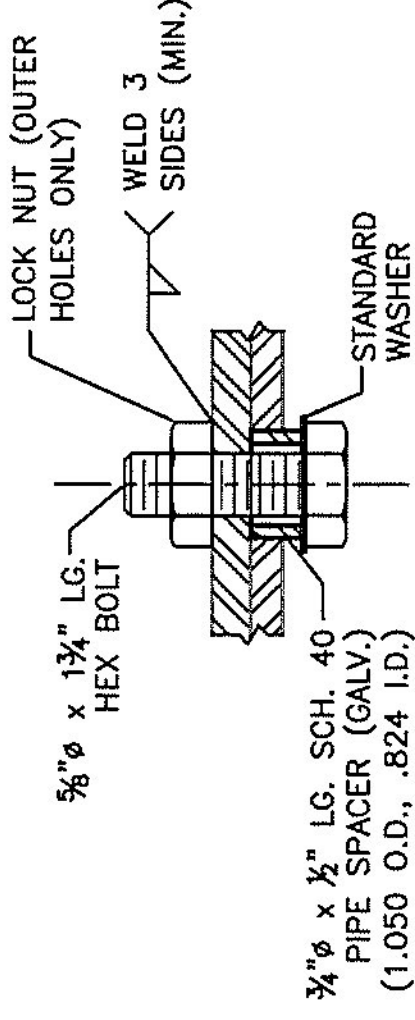


SECTION A-A

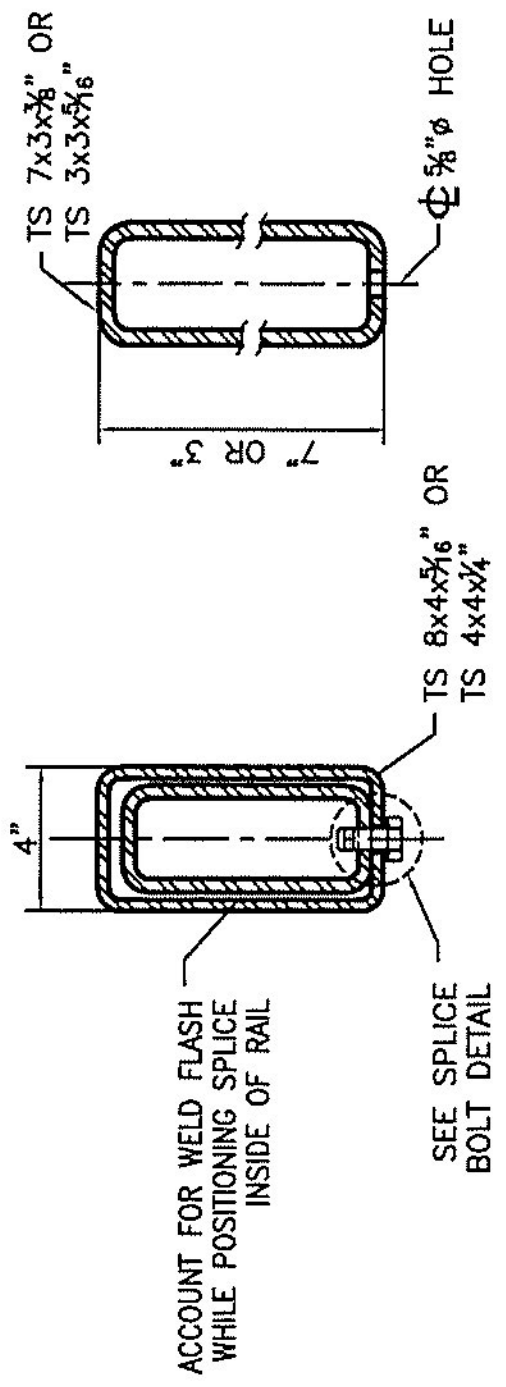


CONNECTION PLATE

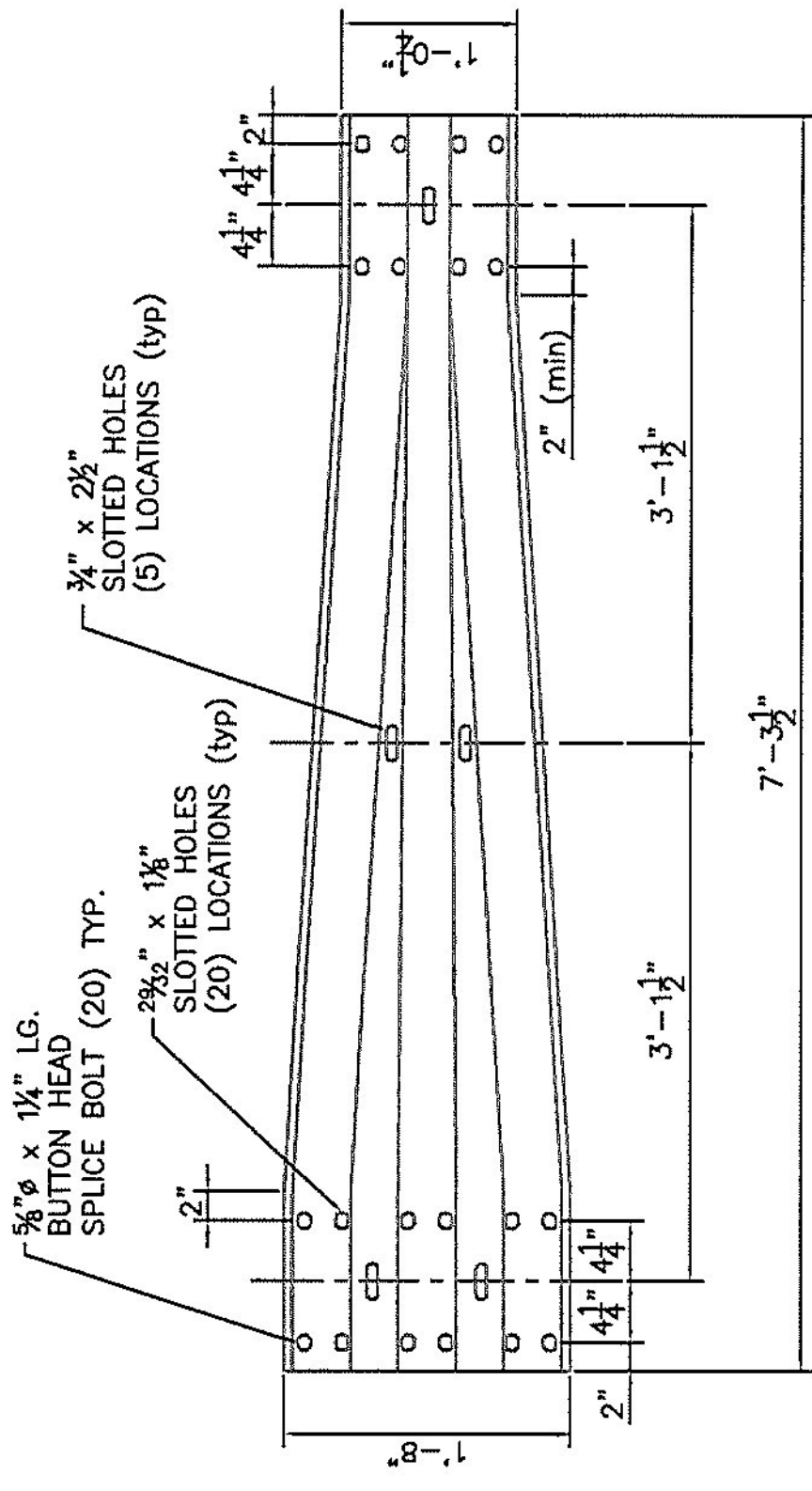
3/8" x 1'-8" x 2'-3"



SPLICE BOLT DETAIL



RAIL SPLICE SECTION



THREE TRANSITION PANEL

12 GAUGE (ASHITO M180 A2)

No.	Per reviewer	Date
1	Initial submittal	06-10-11
0	Initial submittal	12-15-10

REVISIONS

Vermont Agency
RECORDED
 CK'D BY GML
 9:00 a.m.
 RESUBMIT BY TCF

(WW4) POSTS 1 AND ALL POSTS