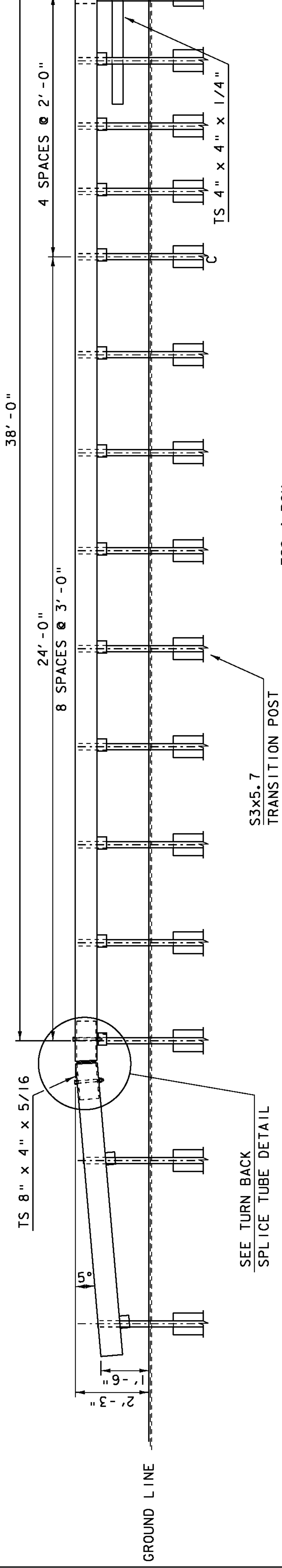


PAY LIMITS SPECIAL PROVISION (GUARDRAIL APPROACH SECTION, GALVANIZED BOX BEAM)

PLAN - VIEW - APPROACH RAIL

6" S3x5.7 TRANSITION POST TO BEGIN BOTTOM RAIL FLARE BACK

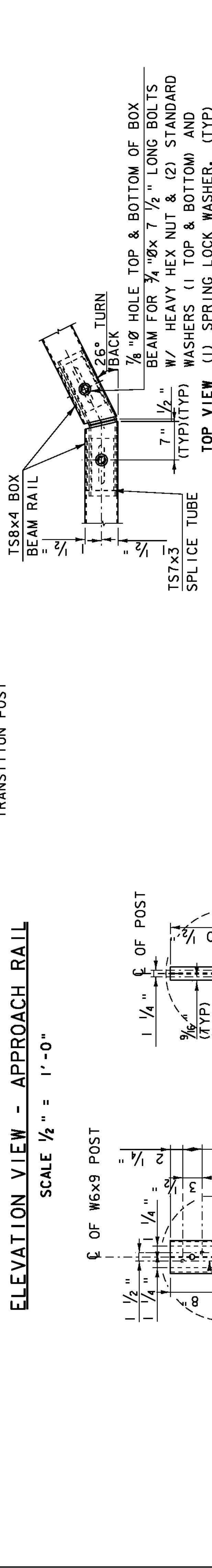


SEE TURN BACK SPLICE TUBE DETAIL

ELEVATION VIEW - APPROACH RAIL

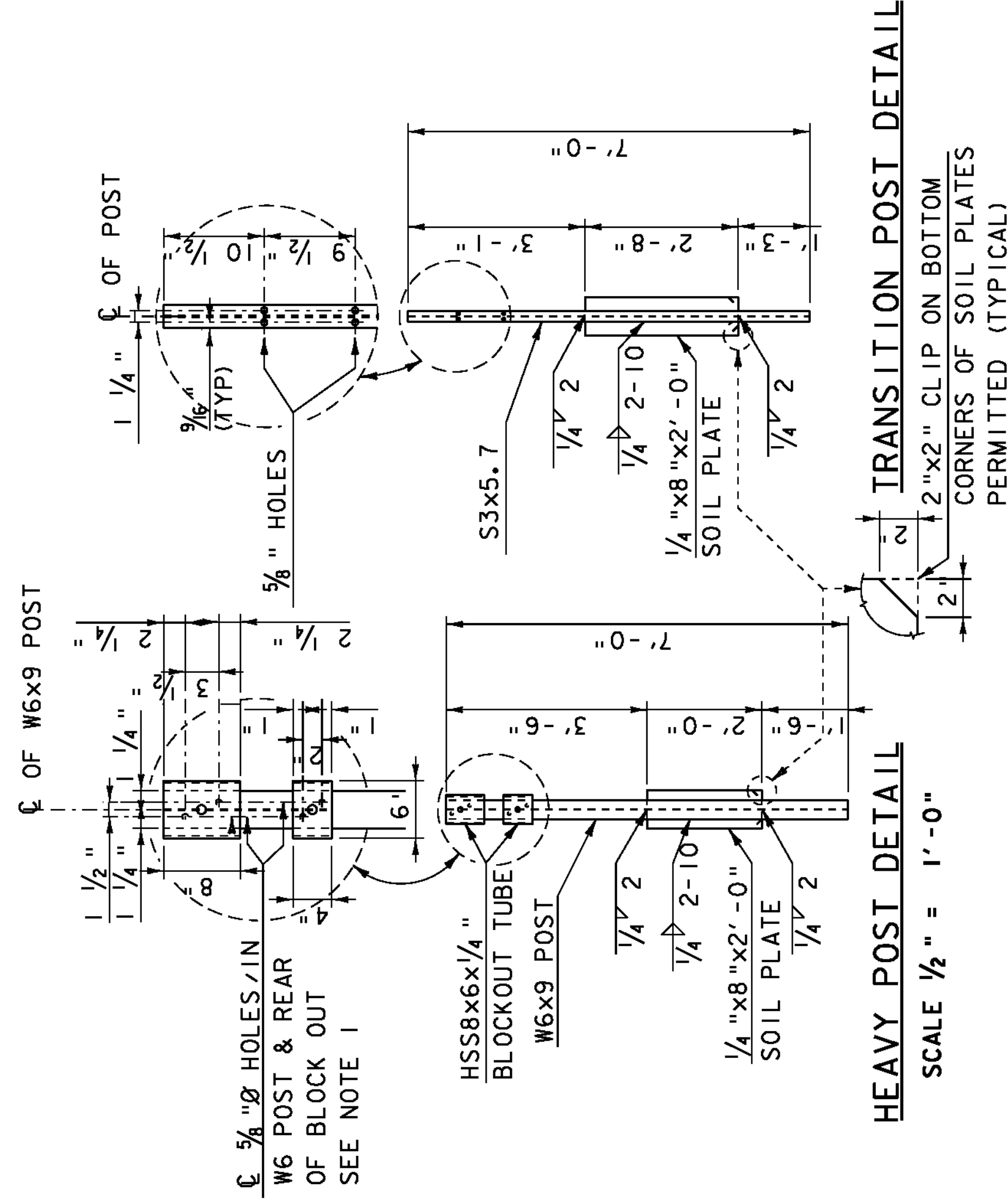
SCALE 1/2" = 1'-0"

S3x5.7 TRANSITION POST



TURN BACK SPLICE TUBE ASSEMBLY

9/16" D.I. FOR 3/4"



HEAVY POST DETAIL

SCALE 1/2" = 1'-0"

TRANSITION POST DETAIL

2" x 2" CLIP ON BOTTOM CORNERS OF SOIL PLATES PERMITTED (TYPICAL)

NOTE:

1. HOLES IN THE POST FOR THE LOWER RAIL MAY BE LOCATED AND DRILLED IN THE FIELD. IF SO, THE GALVANIZING SHALL BE REPAIRED IN ACCORDANCE WITH SPECIFICATION SECTION 525.

TURN BACK SPLICE TUBE DETAIL

TURN BACK & TURN DOWN TUBE JOINT

SCALE 1" = 1'-0"