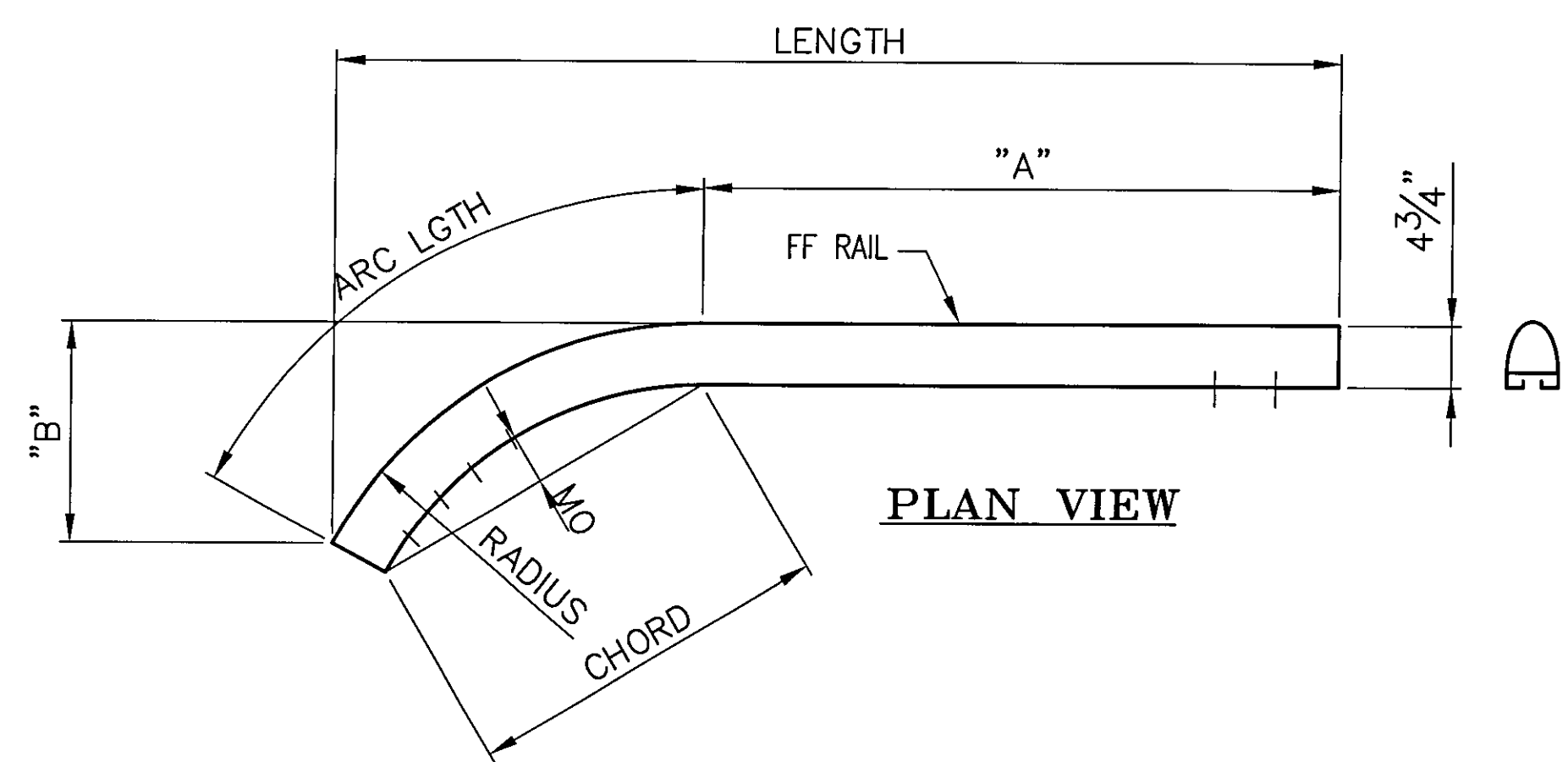
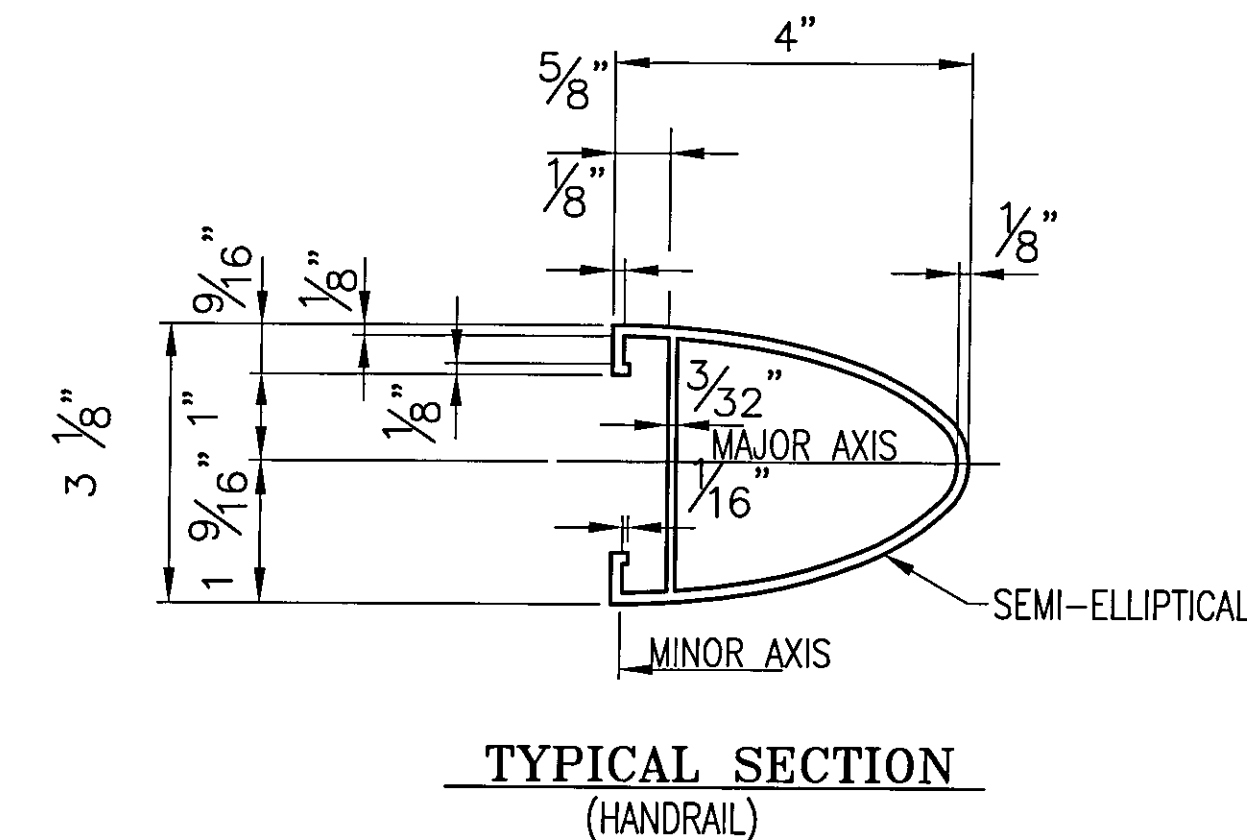
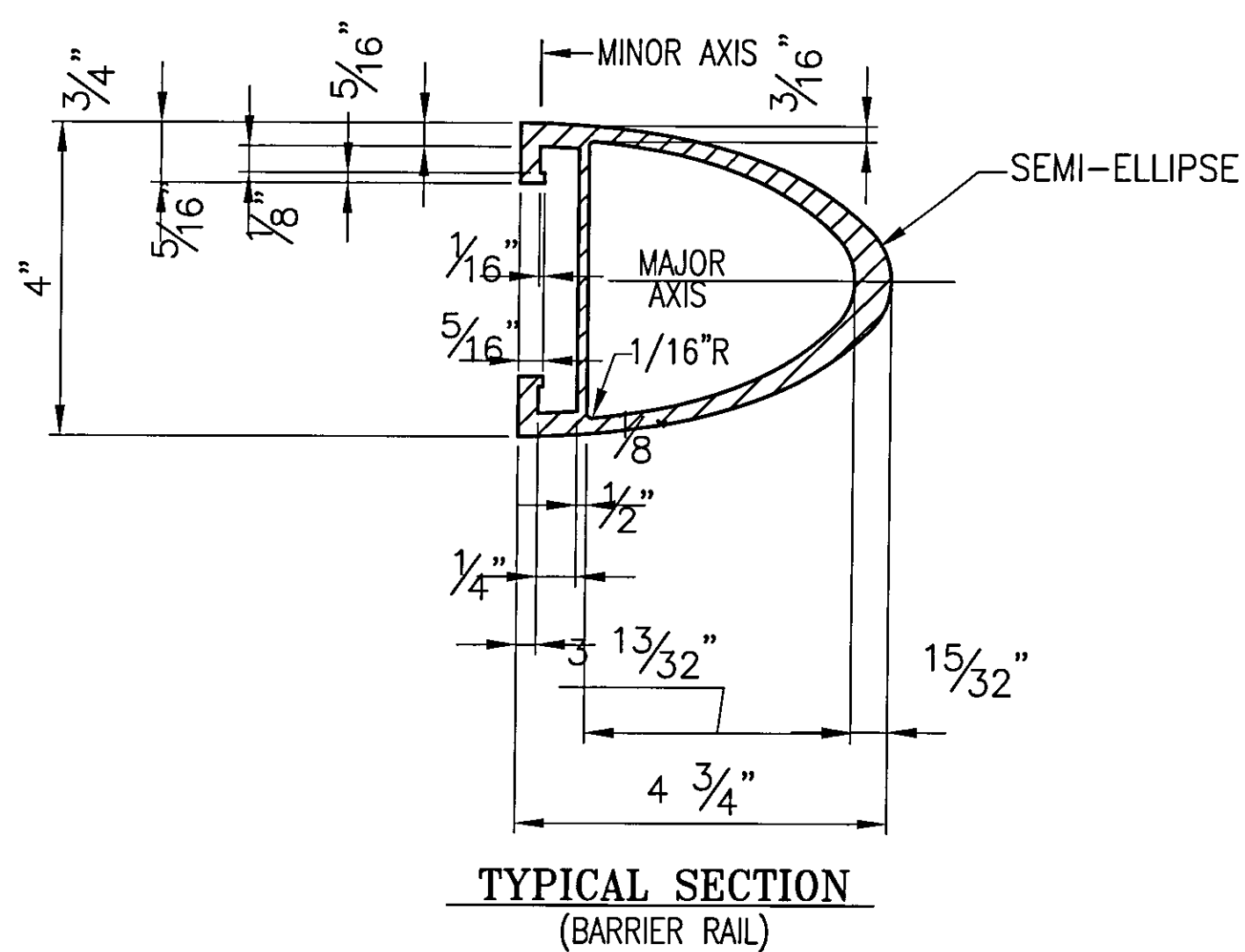
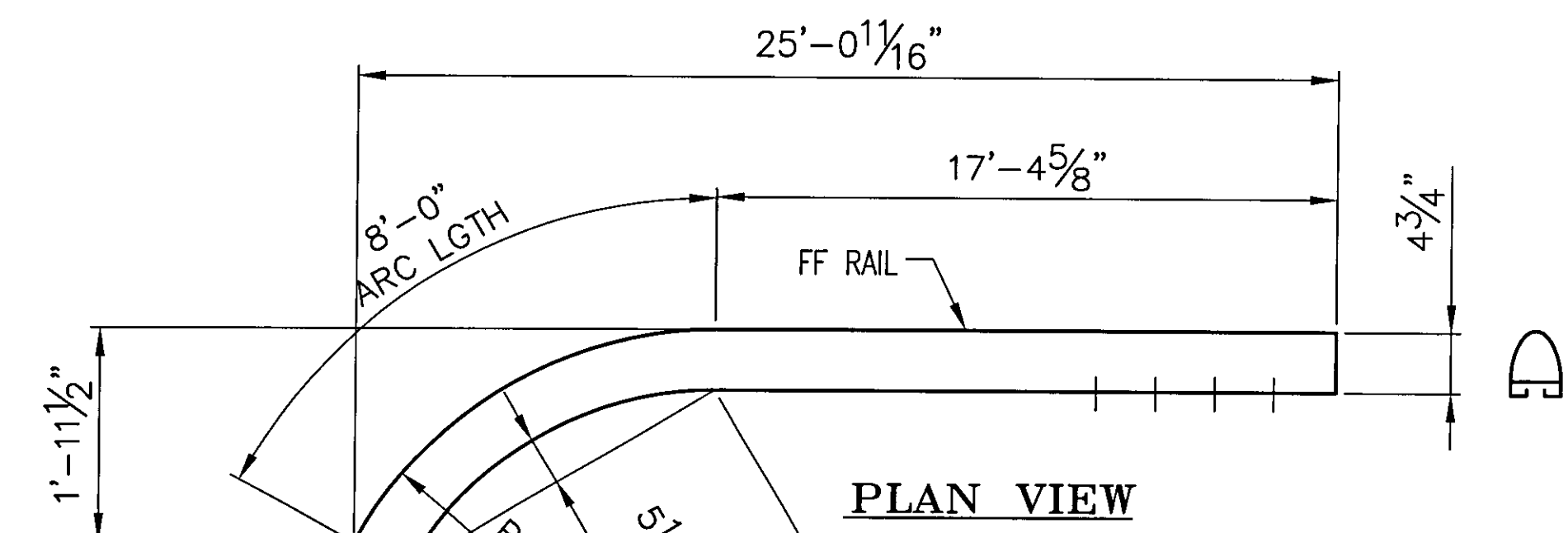


① ONE REQ'D - HANDRAIL 'TR1'  
(REAR ELEVATION VIEW)

11'-8 11/16" LGTH ALONG FF RAIL (+2'-6" FOR SHOP BENDING = 14'-2 11/16")



ONE REQ'D - HANDRAIL 'TR2'  
(FRONT ELEVATION VIEW)

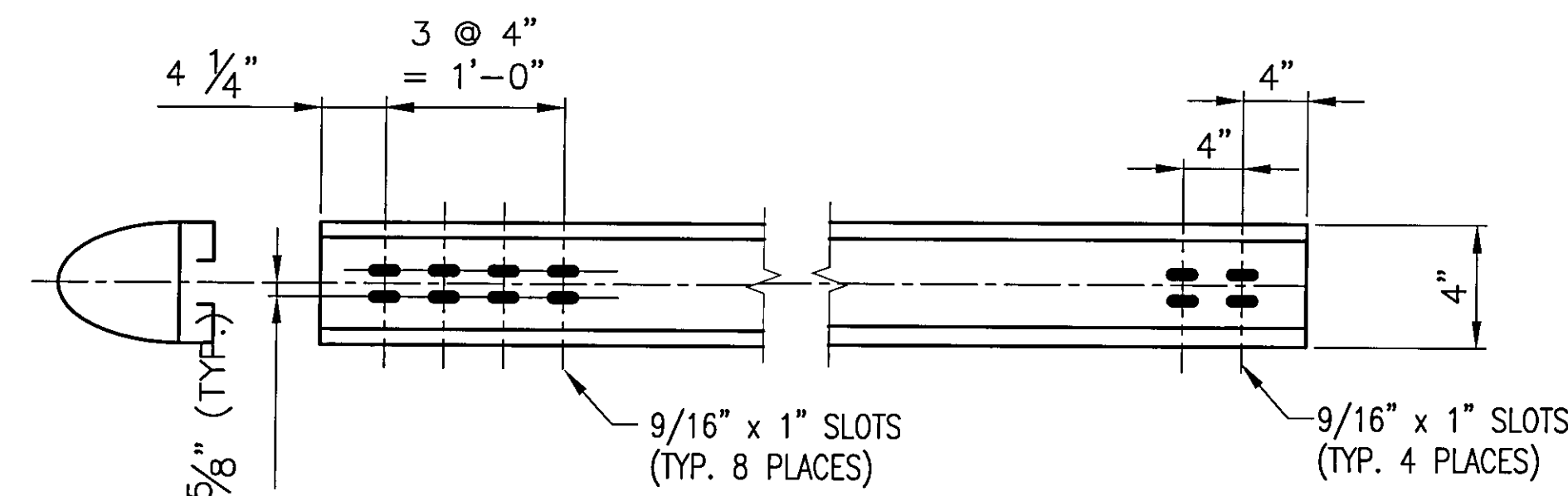


ONE REQ'D - HANDRAIL 'MR2'  
(REAR ELEVATION VIEW)

25'-4 5/8" LGTH ALONG FF RAIL (+2'-6" FOR SHOP BENDING = 27'-10 5/8")

ONE REQ'D - HANDRAIL 'BR2'  
(REAR ELEVATION VIEW)

25'-4 5/8" LGTH ALONG FF RAIL (+2'-6" FOR SHOP BENDING = 27'-10 5/8")



Accepted	
Accepted as Noted	
Accepted/Noted Resubmit	
Rejected/Revise Resubmit	
Rejected - Unacceptable	
Checking is only for conformance with the design concept of the Project and compliance with the information given in the Contract Documents. The Engineer assumes no liability for errors or omissions that may be contained herein. The Contractor, by approving and submitting these documents, verifies their accuracy as stipulated on the Contractor's Shop Drawing Stamp.	
Date: 9/25/09	DuBOIS AND KING By: EPD

BENT TOP RAILS										MATL FOR BENDING
MK.	QTY	OAL (ALONG FF RAIL)	LENGTH	ARC LGTH	"A"	"B"	MO	CHORD	RADIUS	
① MR1	1	24'-10 5/8"	24'-10 5/16"	6'-7 5/8"	18'-3"	5 9/16"	1 5/8"	6'-6 3/4"	40'-0"	+2'-6"
① BR1	1	24'-10 9/16"	24'-10 1/4"	6'-7 5/8"	18'-2 15/16"	5 9/16"	1 5/8"	6'-6 3/4"	40'-0"	+2'-6"

**ANODIZED**  
(SEE NOTES ON LB1)

①	REVISED PER APPROVAL MARKUP	CMS	09/13/09
REV	DESCRIPTION	BY	DATE

BRIDGE No 7  
PROJECT No. BHF 6000 (15) S  
ITEM No: 900.640

APPROVED: \_\_\_\_\_ REC'D APPROVAL \_\_\_\_\_  
DRAWING \_\_\_\_\_

**L.B. FOSTER COMPANY**  
1016 GREENTREE ROAD  
PITTSBURGH, PENNSYLVANIA 15220

FOR: F. R. LAFAYETTE, INCORPORATED  
VERMONT AGENCY OF TRANSPORTATION  
CITY OF BARRE, COUNTY OF WASHINGTON  
APPROACH RAILING FOR PROSPECT ST. OVER STEVENS BRANCH  
3L ALUMINUM APPROACH RAIL - RAIL DETAILS

MADE CMS DATE 08/11/09 JOB No ARO569 CUST No \_\_\_\_\_  
CHECK BLJ DATE 08/18/09 DRAWING LB35 REV. No. ONE