

**OFFSET BLOCK CHART FOR NW APPROACH
POSTS P2 - P5**

POST No	OFFSET BLOCK	QTY.	OFFSET BLOCK ~ POST MTG. DIMENSIONS							BEV
			A	B	C	D	E	F (O.C.)	G	
P2	OB2	1	2'-7 1/16"	2'-2"	1'-1 3/8"	1 7/8"	5/8"	2'-6 3/4"	1 1/4"	1 1/16"
P3	OB3	1	2'-4 7/8"	1'-11 7/8"	11 7/8"	1 7/8"	5/8"	2'-4 1/2"	1 1/4"	1 1/16"
P4	OB4	1	2'-2 11/16"	1'-9 11/16"	10 3/8"	1 7/8"	5/8"	2'-2 3/8"	1 1/4"	1 1/16"
P5	OB5	1	2'-0 9/16"	1'-7 9/16"	8 15/16"	1 7/8"	5/8"	2'-0 1/4"	1 1/4"	1 1/16"

OFFSET BLOCK ~ RAIL MTG. DIMENSIONS

POST No.	OFFSET BLOCK	H	J	K	L	M	N
P2	OB2	1 1/16"	1'-0 5/8"	2'-1 5/16"	7/8"	1'-0 1/4"	2'-0 13/16"
P3	OB3	1 1/16"	11 1/8"	1'-11 3/16"	7/8"	10 3/4"	1'-10 11/16"
P4	OB4	1 1/16"	9 5/8"	1'-9"	7/8"	9 1/4"	1'-8 1/2"
P5	OB5	1 1/16"	8 3/16"	1'-6 7/8"	7/8"	7 3/4"	1'-6 3/8"

**OFFSET BLOCK CHART FOR SW APPROACH
POST P12**

POST No	OFFSET BLOCK	QTY.	OFFSET BLOCK ~ POST MTG. DIMENSIONS							BEV
			A	B	C	D	E	F (O.C.)	G	
P12	OB12	1	1'-11 7/8"	1'-6 13/16"	7 15/16"	1 13/16"	9/16"	1'-11 9/16"	1 1/4"	15/16"

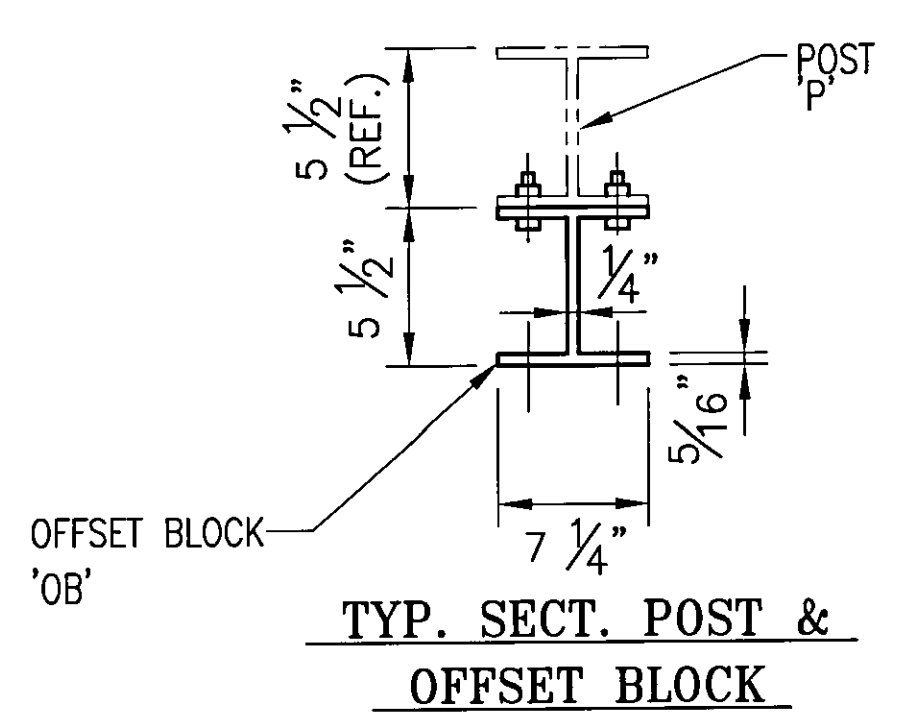
OFFSET BLOCK ~ RAIL MTG. DIMENSIONS

POST No.	OFFSET BLOCK	H	J	K	L	M	N
P12	OB12	1"	7"	1'-5 15/16"	7/8"	6 9/16"	1'-5 7/16"

NOTE:
 2 CLAMPING BARS CB-01-H (#28596) PER POSTS P2 - P5, P12
 4 CLAMPING BARS CB-03-A (#19447) PER POSTS P2 - P8
 w/ 1/2" -13 UNC S.S. BOLT x 1" LG. 'FB1', 1 1/16" O.D. x 17/32" I.D. x 3/32" THK. ALUM WASHER 'FW1' (#15280 & #19404) (16 PER POST)

NOTE:
 4 CLAMPING BARS CB-03-A (#19447) PER POST P12
 w/ 1/2" -13 UNC S.S. BOLT x 1" LG. 'FB1', 1 1/16" O.D. x 17/32" I.D. x 3/32" THK. ALUM WASHER 'FW1' (#15280 & #19404) (8 PER POST)

Accepted as Noted	Accepted as Resubmit	Rejected - Unacceptable
Checked by: <i>[Signature]</i>	Date: 9/25/09	DUBOIS AND KING By: ZPD



ANODIZED
(SEE NOTES ON LB5)

BRIDGE No. 7
 PROJECT No. BHF 6000 (15) S
 ITEM No: 900.640

APPROVED: _____	REC'D APPROVAL _____
DRAWING _____	
L.B. FOSTER COMPANY 1016 GREENTREE ROAD PITTSBURGH, PENNSYLVANIA 15220	
FOR: F. R. LAFAYETTE, INCORPORATED VERMONT AGENCY OF TRANSPORTATION CITY OF BARRE, COUNTY OF WASHINGTON APPROACH RAILING FOR PROSPECT ST. OVER STEVENS BRANCH OFFSET BOX DETAILS	
MADE CMS DATE 08/11/09 JOB No AR0569 CUST No.	CHECK: BLJ DATE 08/18/09 DRAWING LB33 REV. No. ONE

REV	DESCRIPTION	BY	DATE
1	REVISED ALL POST HIGHTS. PER APPROVER COMMENTS	CMS	09 13 09