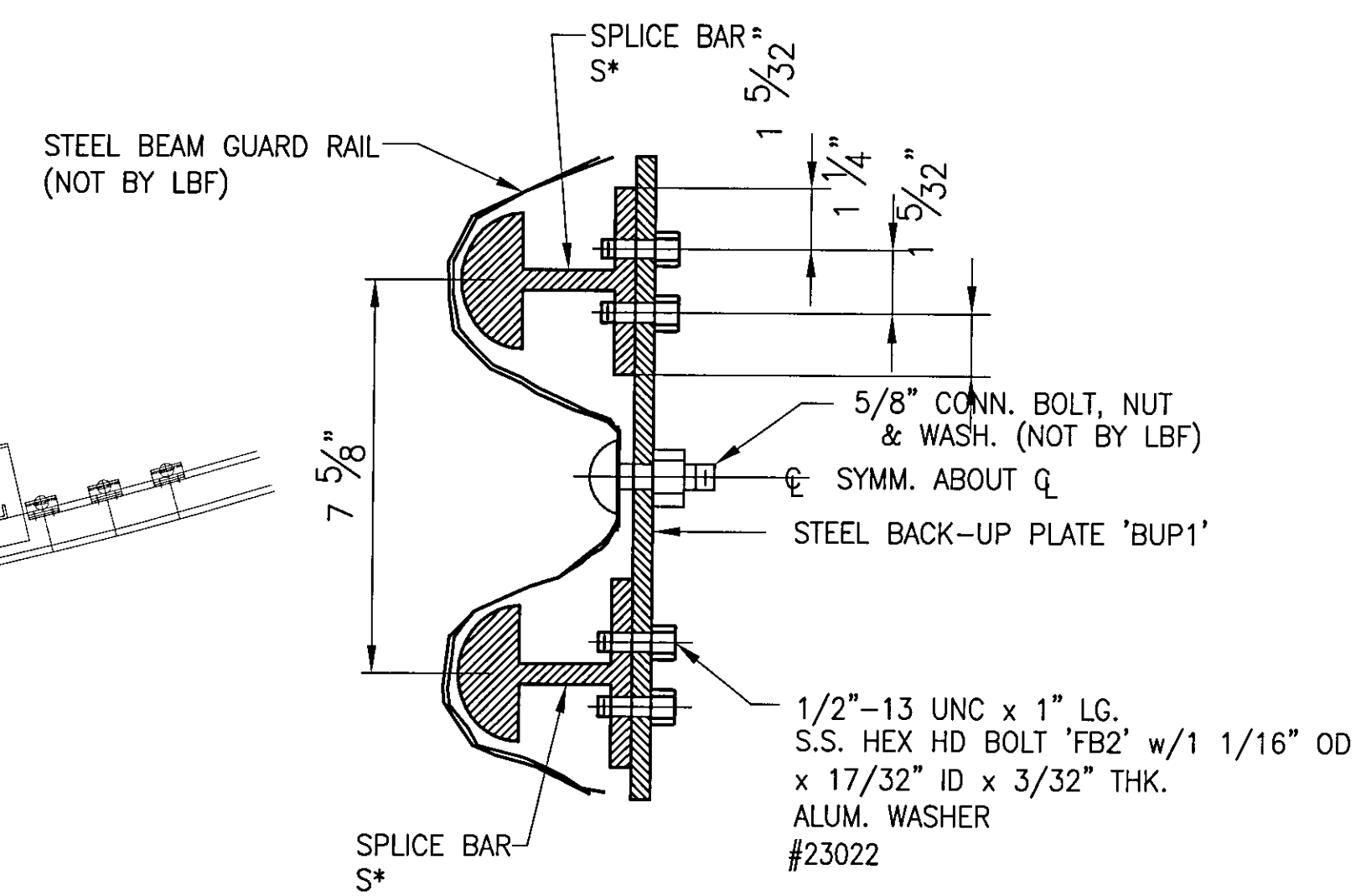
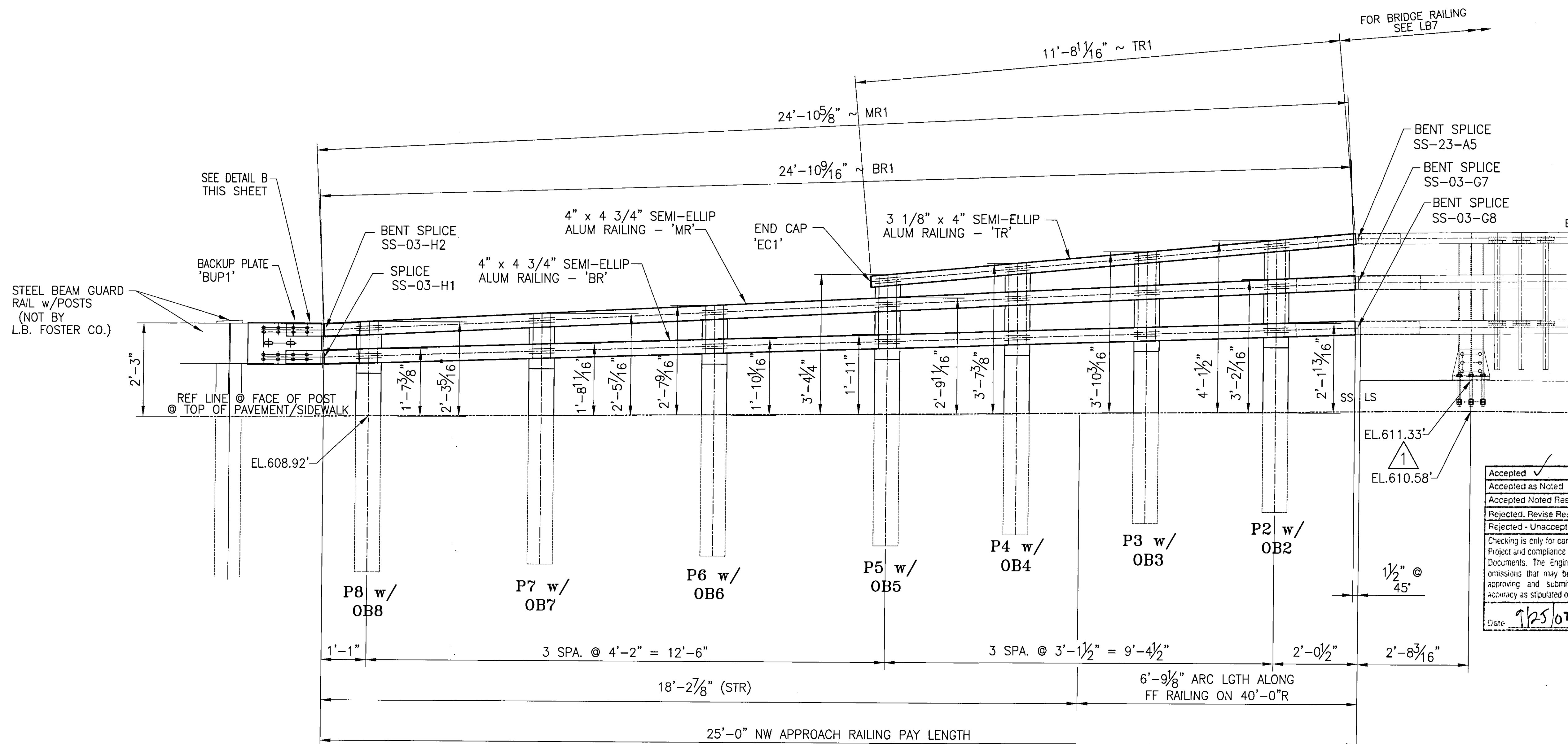


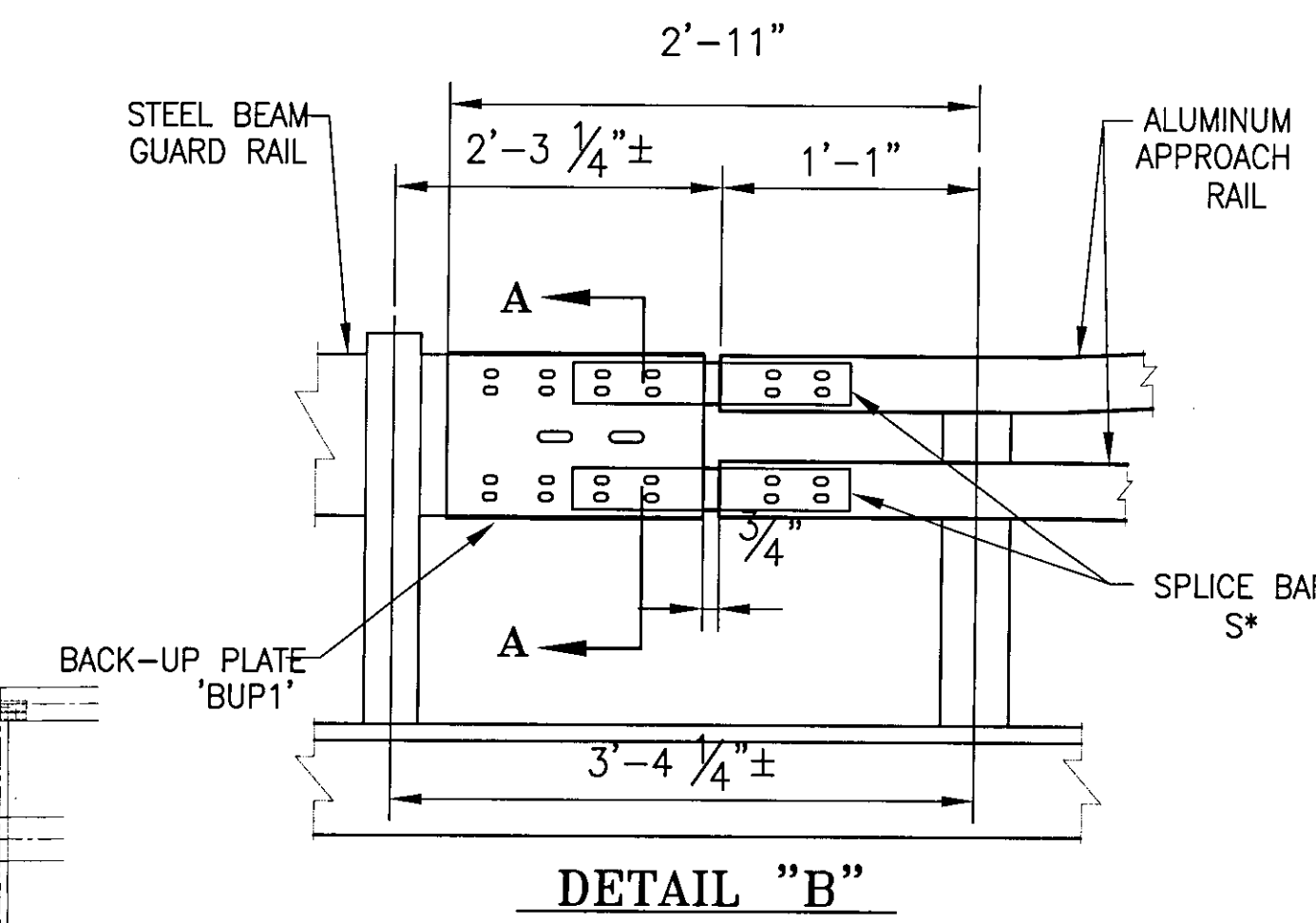
PLAN VIEW



SECTION A-A



INSIDE ELEVATION ~ NW APPROACH RAIL



DETAIL "B"

NOTE:
 • RAIL LENGTHS DO NOT INCLUDE END CAPS AND/OR GAPS.
 • LENGTH OF APPROACH RAILING ON THIS SHEET IS 25.0 LF PAY LENGTH ALONG FF OF RAILING.

| | |
|-------------------------|---------------------------|
| Accepted | Accepted as Noted |
| Accepted Noted Resubmit | Rejected, Revise Resubmit |
| Rejected - Unacceptable | Rejected - Unacceptable |

Checking is only for conformance with the design concept of the Project and compliance with the information given in the Contract Documents. The Engineer assumes no liability for errors or omissions that may be contained herein. The Contractor, by approving and submitting these documents, verifies their accuracy as stipulated on the Contractor's Shop Drawing Stamp.

Date: 9/25/07 By: JFD

ANODIZED
 (SEE LB5 FOR NOTES)

BRIDGE No. 7
 ITEM No: 900.640
 PROJECT No. BHF 6000 (15) S

| | |
|---|----------------|
| APPROVED: | REC'D APPROVAL |
| DRAWING | |
| L.B. FOSTER COMPANY | |
| 1016 GREENTREE ROAD PITTSBURGH, PENNSYLVANIA 15220 | |
| FOR: F. R. LAFAYETTE, INCORPORATED | |
| VERMONT AGENCY OF TRANSPORTATION | |
| CITY OF BARRE, COUNTY OF WASHINGTON | |
| BRIDGE RAILING FOR PROSPECT ST. OVER STEVENS BRANCH | |
| 3L ALUMINUM NW APPROACH RAIL ELEVATIONS | |

| | | | |
|------|-----------------------------------|-----|----------|
| 1 | GEN. REVISIONS PER APPROVAL PRINT | CMS | 09 13 09 |
| REV. | DESCRIPTION | BY | DATE |
| | | | |

| | | | | | | | |
|-------|-----|------|----------|---------|--------|-----------|-----|
| MADE | CMS | DATE | 06/30/09 | JOB No. | AR0569 | CUST. No. | |
| CHECK | BLJ | DATE | 08/18/09 | DRAWING | LB28 | REV. No. | ONE |