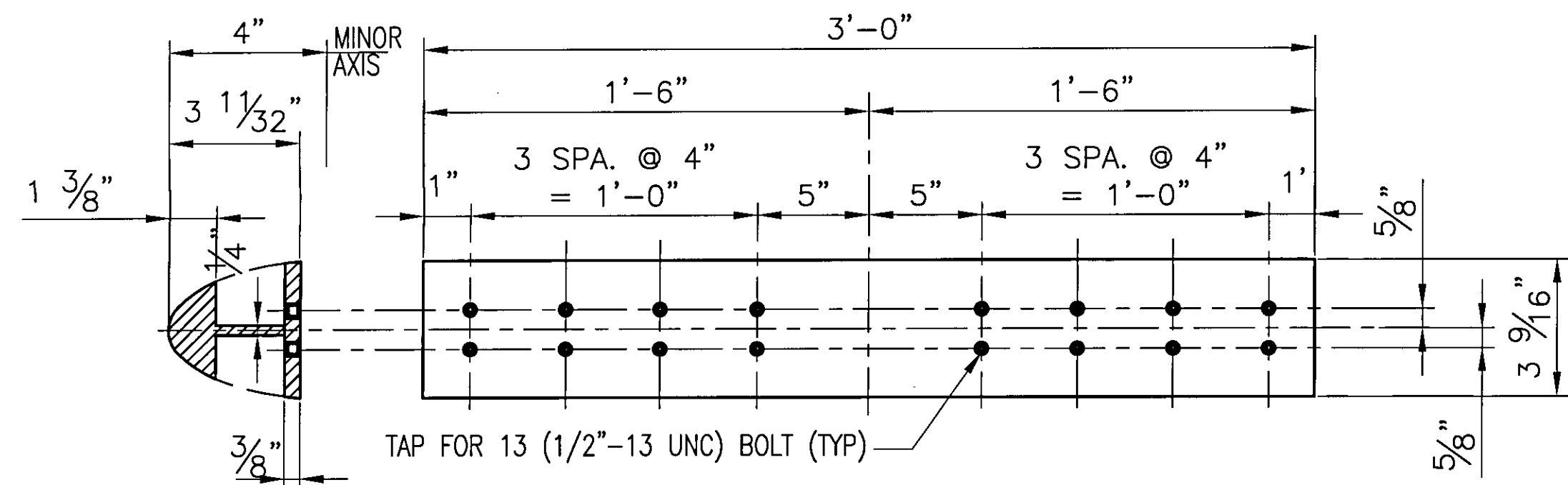
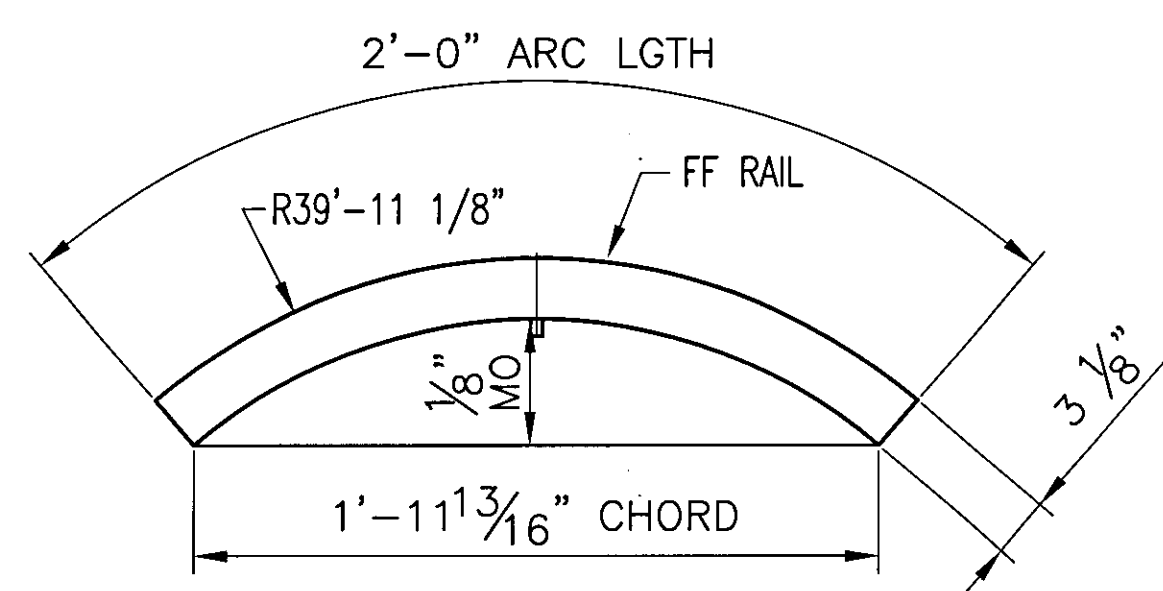


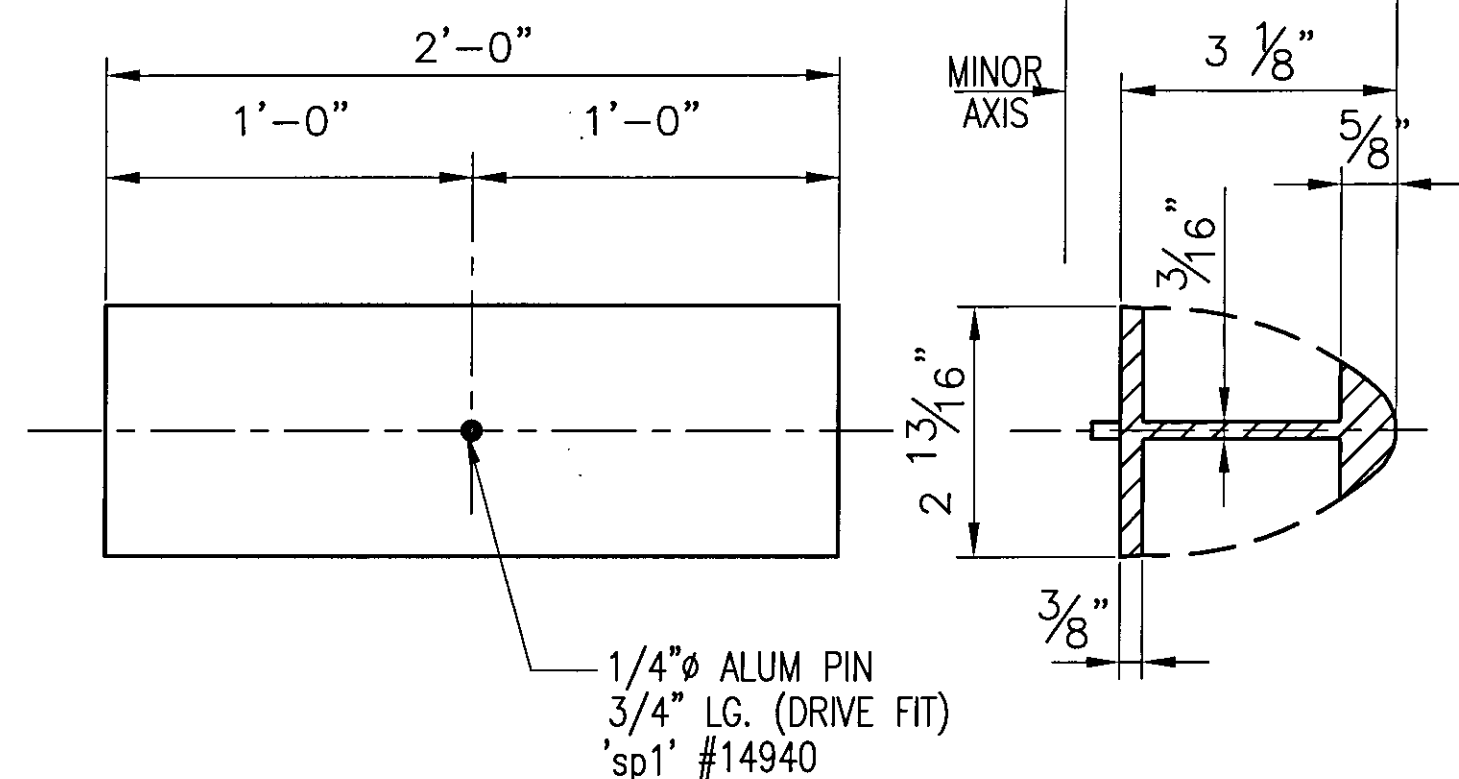
PLAN VIEW



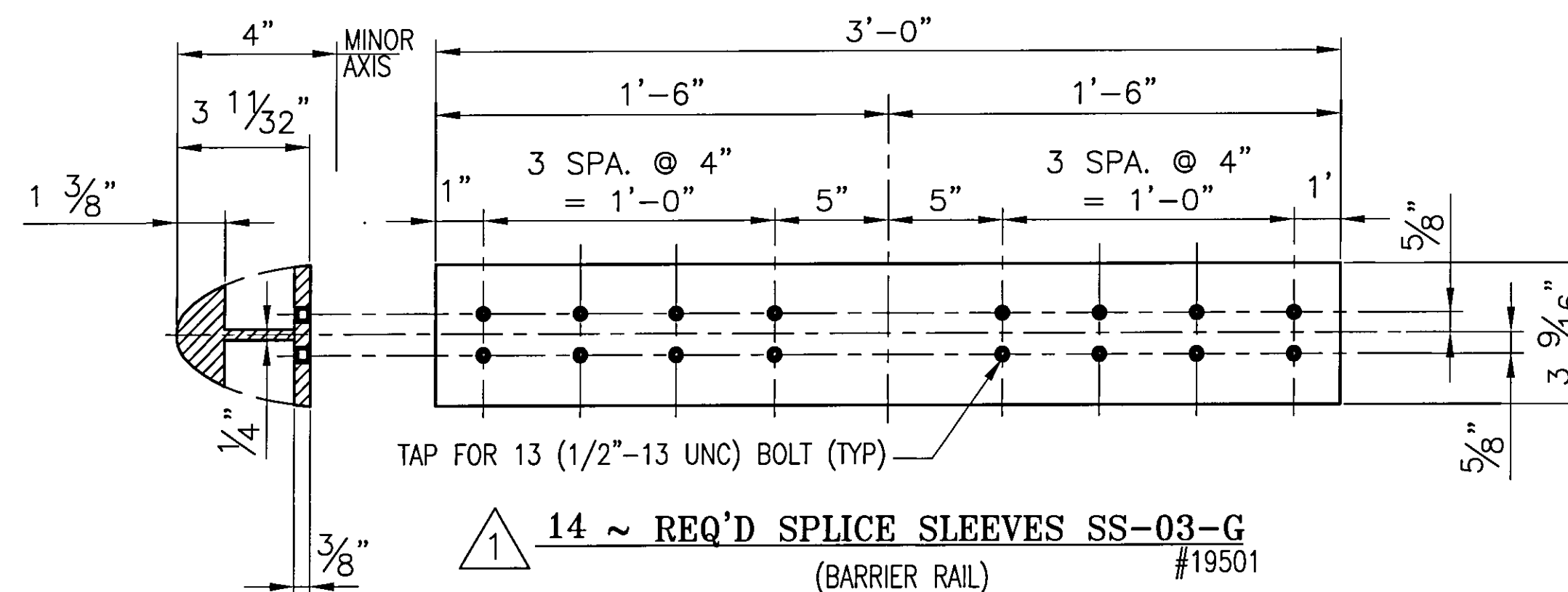
2 ~ REQ'D BENT SPlice SLEEVES SS-03-G1 (BARRIER RAIL) #19501



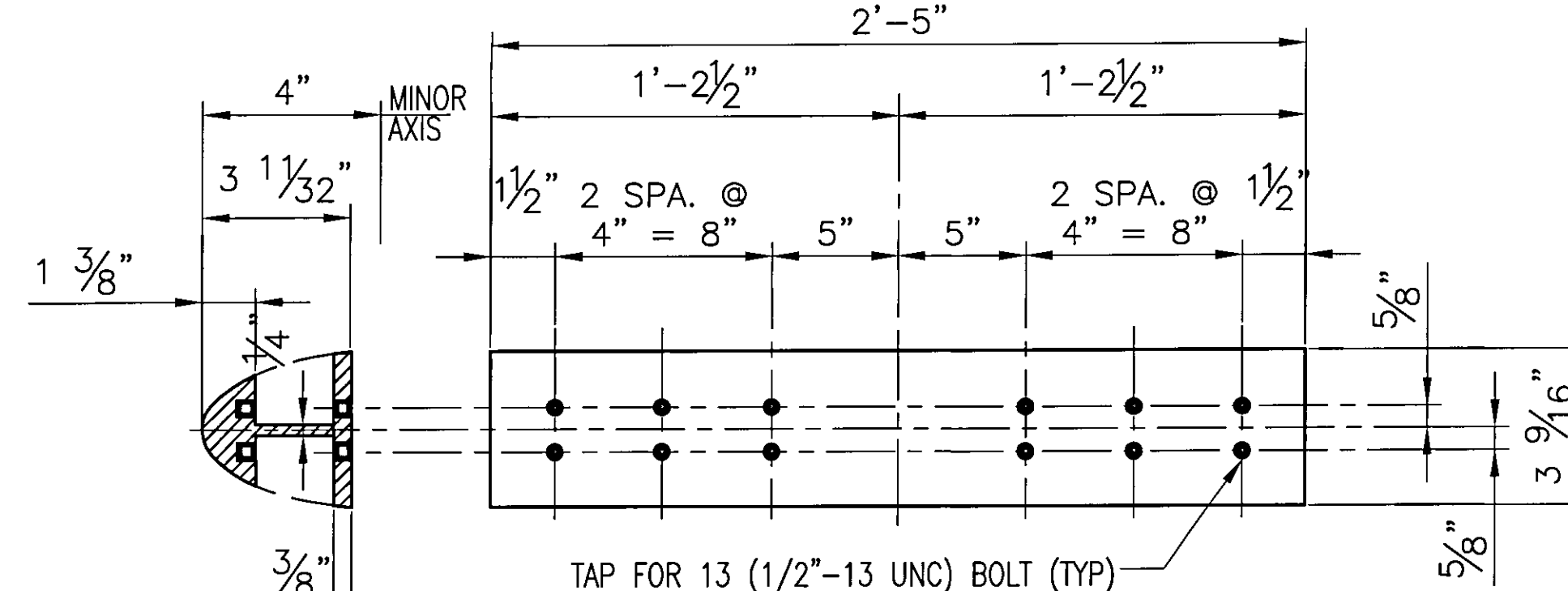
PLAN VIEW



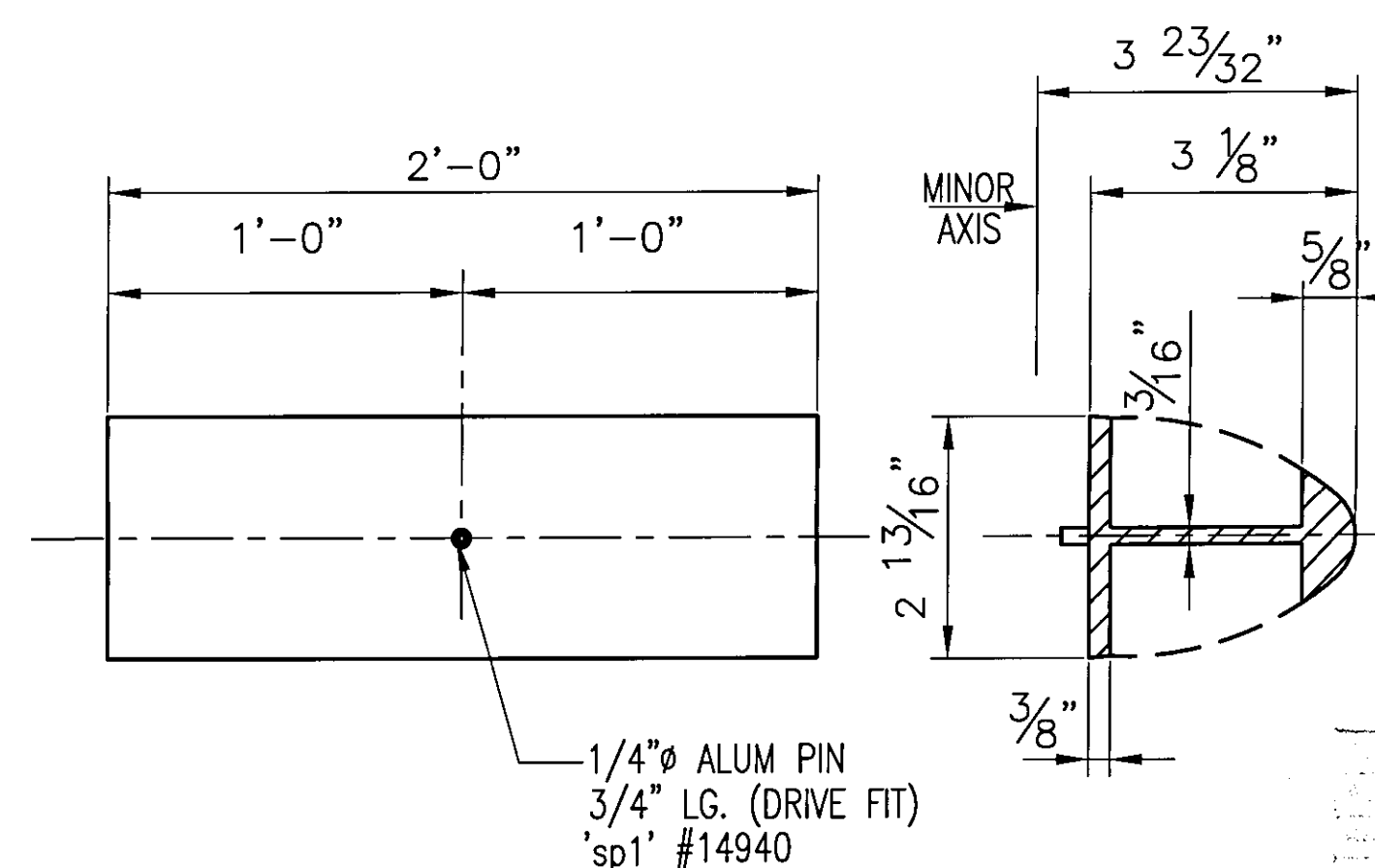
ONE ~ REQ'D BENT SPlice SLEEVES SS-23-A1 (REAR ELEVATION)(HANDRAIL) #20204



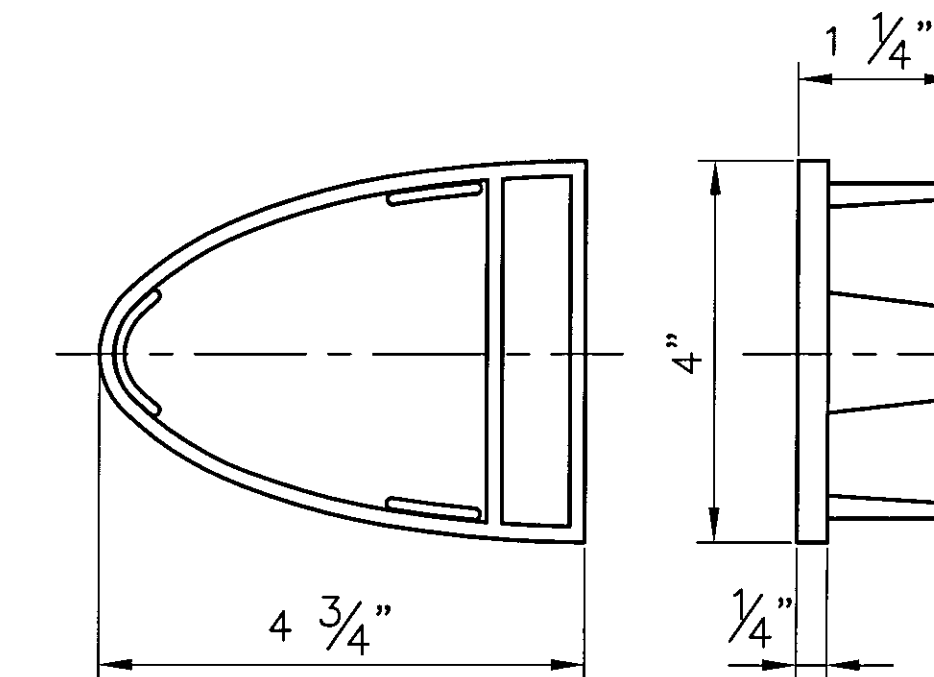
14 ~ REQ'D SPlice SLEEVES SS-03-G (BARRIER RAIL) #19501



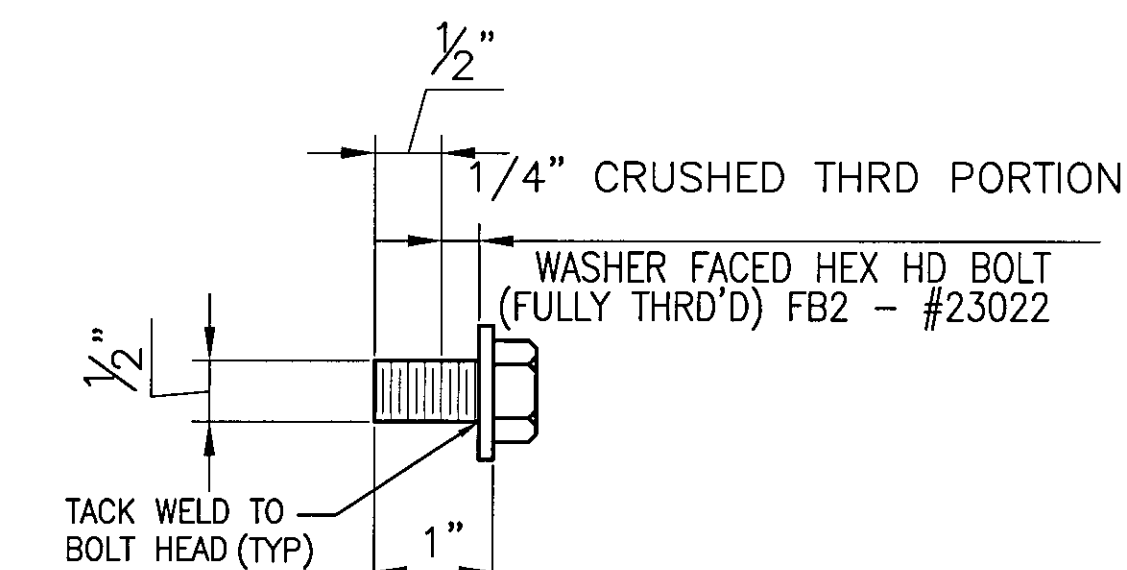
2 ~ REQ'D SPECIAL SPlice SLEEVES SS-03-G2 (BARRIER RAIL) #19501



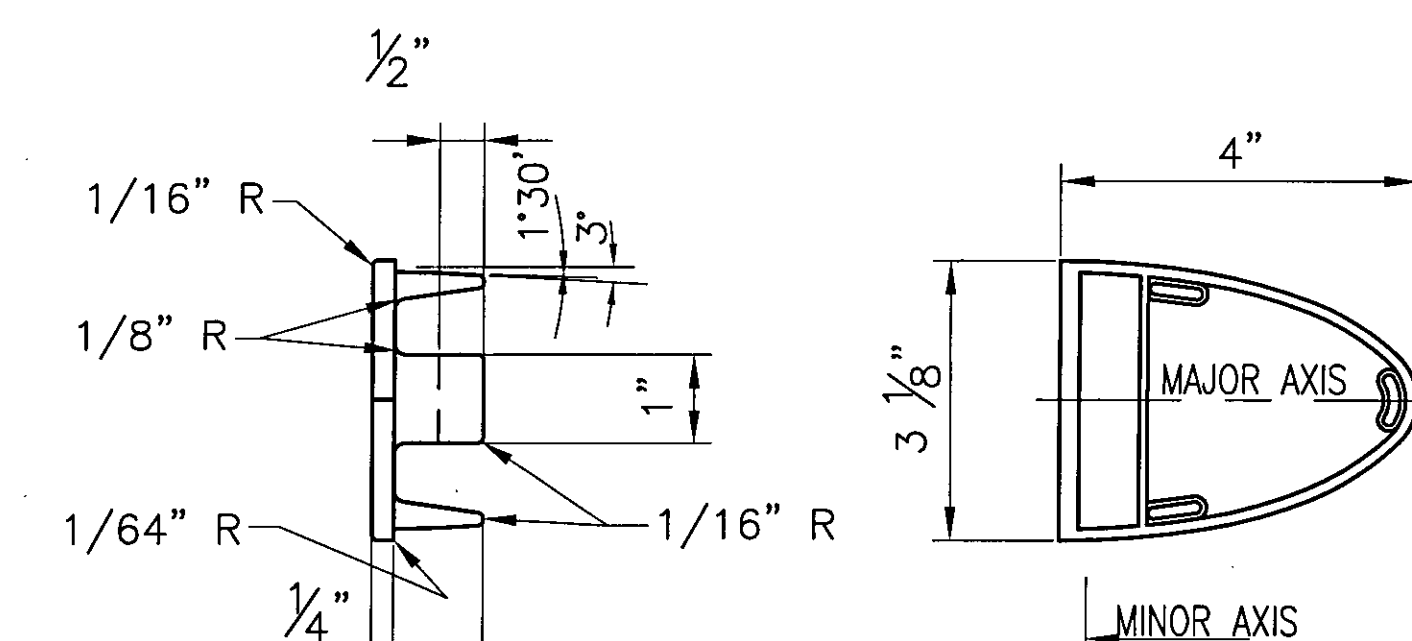
9 ~ REQ'D SPlice SLEEVES SS-23-A (REAR ELEVATION)(HANDRAIL) #20204



4 ~ REQ'D. ALUM END CAPS EC2 #19345



SPlice BOLT DETAILS



2 ~ REQ'D END CAPS 'EC1' HANDRAIL (DRIVE TYPE) #19344

APPROVED: _____
 Date 9/25/09 By ZPD
 DuBOIS AND KING

BRIDGE No. 7
 PROJECT No. BHF 6000 (15) S ITEM No: 900.640
 APPROVED: _____ REC'D APPROVAL _____
 DRAWING _____
L.B. FOSTER COMPANY
 1016 GREENTREE ROAD
 PITTSBURGH, PENNSYLVANIA 15220
 FOR: F. R. LAFAYETTE, INCORPORATED
 VERMONT AGENCY OF TRANSPORTATION
 CITY OF BARRE, COUNTY OF WASHINGTON
 APPROACH RAILING FOR PROSPECT ST. OVER STEVENS BRANCH
 3-LINE ALUM BRIDGE RAIL ~ SPlice DETAILS

REV.	DESCRIPTION	BY	DATE
1	REVISED DWG NO.	CMS	09/13/09
	MADE CMS DATE 08/10/09 JOB No. ARO569 CUST. No.		
	CHECK BLJ DATE 08/17/09 DRAWING LB26 REV. No. ONE		

ANODIZED
 (SEE NOTES ON LB5)