

GENERAL NOTES

ALL MATERIAL AND WORKMANSHIP SHALL BE IN ACCORDANCE WITH VERMONT AGENCY OF TRANSPORTATION STANDARD SPECIFICATIONS FOR CONSTRUCTION DATED 2006 AND ITS LATEST REVISIONS.

DESCRIPTION	ASTM	ALLOY/GR.	REMARKS
RAILS, POSTS, BASES, SPLICES, CLAMP BARS, PINS,	B221	6061-T6 OR 6351-T5	MIN. YIELD STRENGTH F _y = 35,000 psi.
RIVETS	B316 F880	6061-T6 TYPE 303	BUTTON HD., CONE PT.
STAINLESS STEEL BOLTS	A193	GRADE B8	
ANCHOR RODS	A449		GALV. A153
STEEL HEX. NUTS	A563	GRADE DH	GALV. A153
STEEL WASHERS	F436		GALV. A153
ANCHOR PLATES	A569		COMMERCIAL QUALITY (PLAIN)
ALUMINUM WASHERS	B209	2024-T4	
END CAPS	B26		356-F
PREFORMED PADS			SECTION 731.01 OR 731.02
ELECTRODES FOR WELDING		AWS A5.10 ER5356	

POSTS TO BE NORMAL TO GRADE AND RAILS SHALL BE PARALLEL TO GRADE. RAILS TO BE ATTACHED TO A MINIMUM OF THREE POSTS WHEN POSSIBLE.

ALL RAILS AND WELDS TO BE FREE FROM ALL BURRS AND ROUGH EDGES. ENDS OF TUBE SECTIONS SHALL BE SAWED OR MILLED. GRIND ALL CUT EDGES SMOOTH.

ALL THREADS TO BE UNC CLASS 2A/2B.

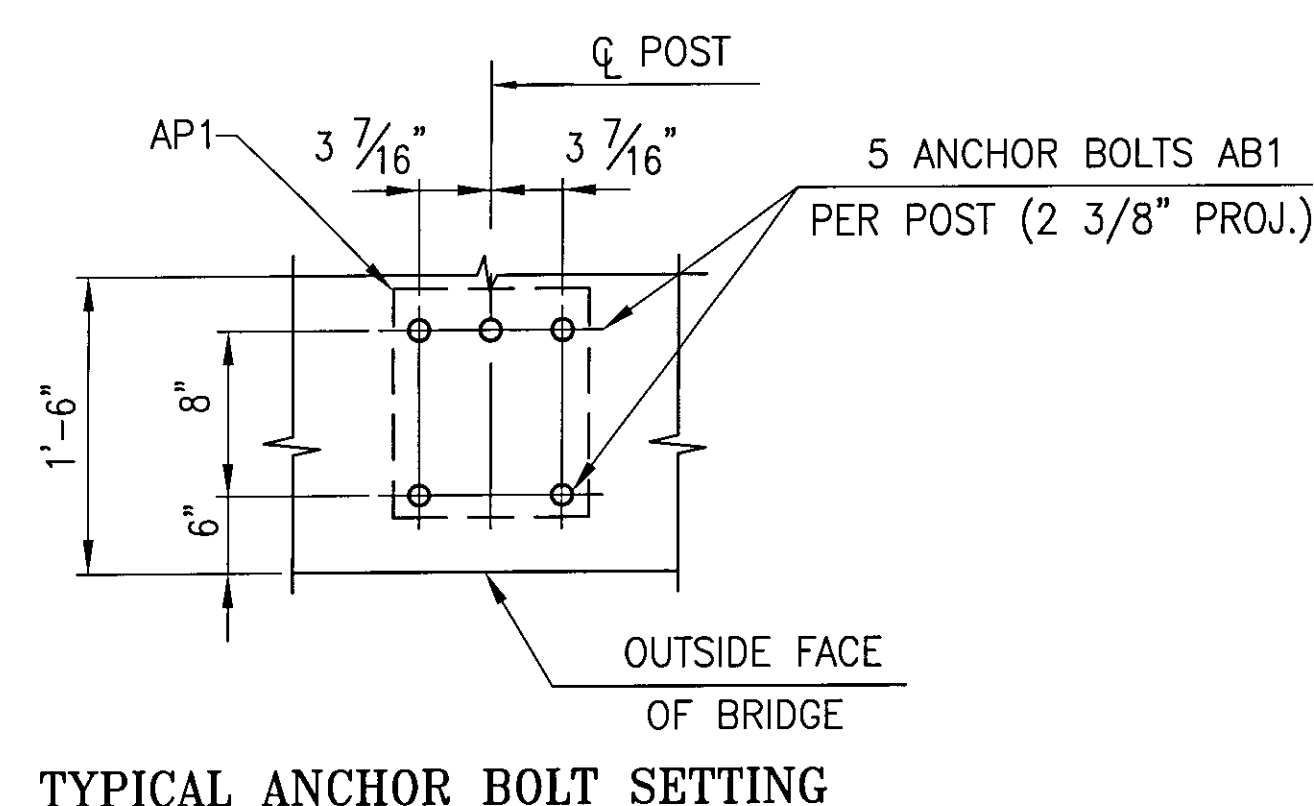
ALL EXTRUSION TOLERANCES NOT SHOWN SHALL BE IN ACCORDANCE WITH ASTM B221.

IF CUT THREADS ARE USED, BOLT DIAMETER SHALL NOT BE LESS THAN NOMINAL DIAMETER. IF ROLLED THREADS ARE USED, BOLT DIAMETER SHALL NOT BE LESS THAN THE ROOT DIAMETER OF THREADS

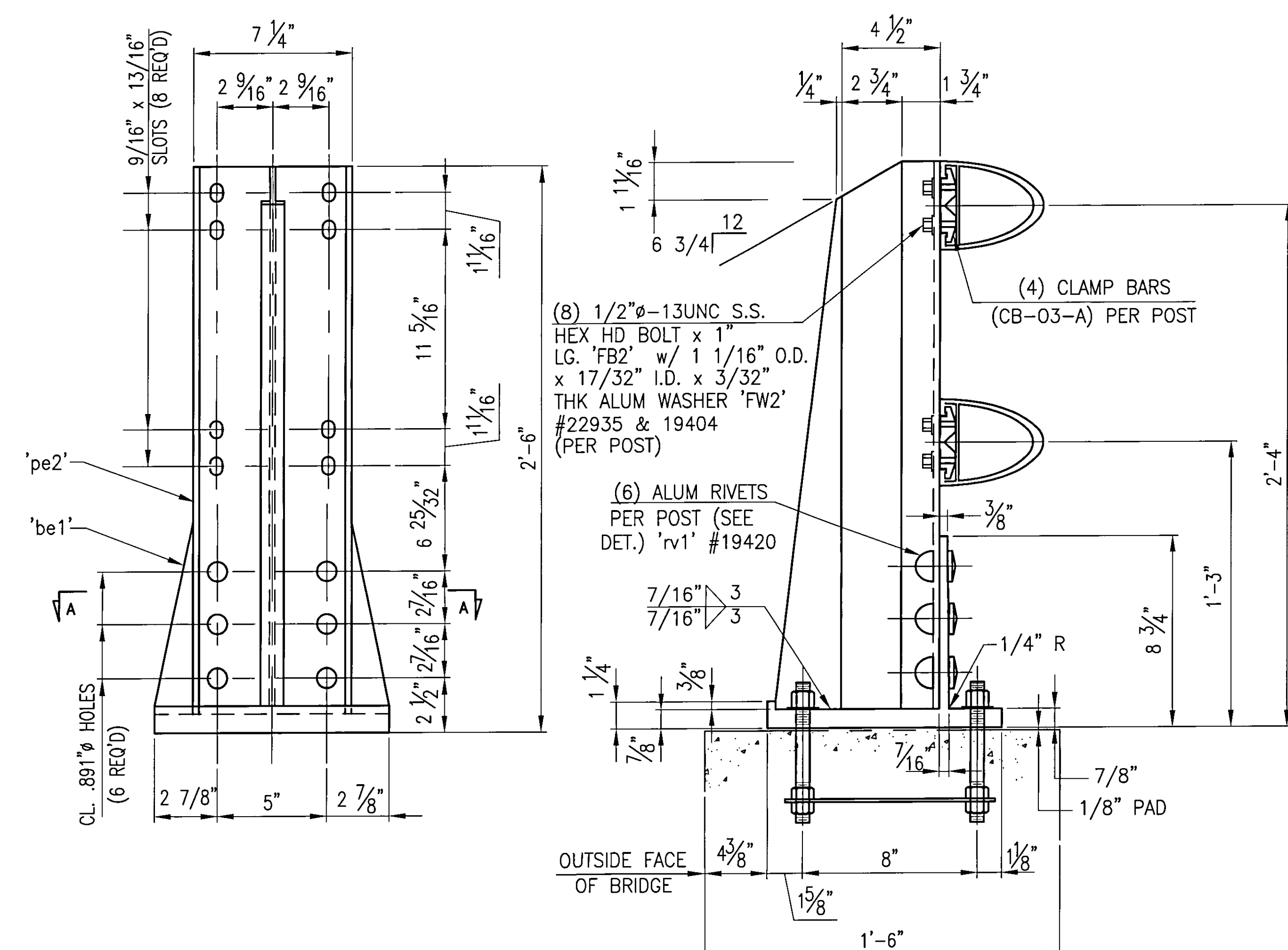
THE SPLICE BAR SHALL BE ATTACHED TO THE RAIL ELEMENT AS FOLLOWS:

THE RAIL SPLICE AT THE BRIDGE EXPANSION JOINT SHALL BE FASTENED ON BOTH SIDES OF THE RAIL SPLICE USING THE FULLY THREADED WASHER FACED BOLTS, TIGHTENED SECURELY TO THE END OF THREADS, AND LEAVING A 1/8" GAP, THIS ALLOWS EXPANSION ON BOTH SIDES OF THE JOINT.

ALL NUTS SHALL COMPLY WITH AMERICAN HEXAGON ANSI SPECIFICATIONS B18.2



TYPICAL ANCHOR BOLT SETTING



7 ~ REQ'D FABRICATED RAIL POSTS P-201-Spec (SIDEWALK)

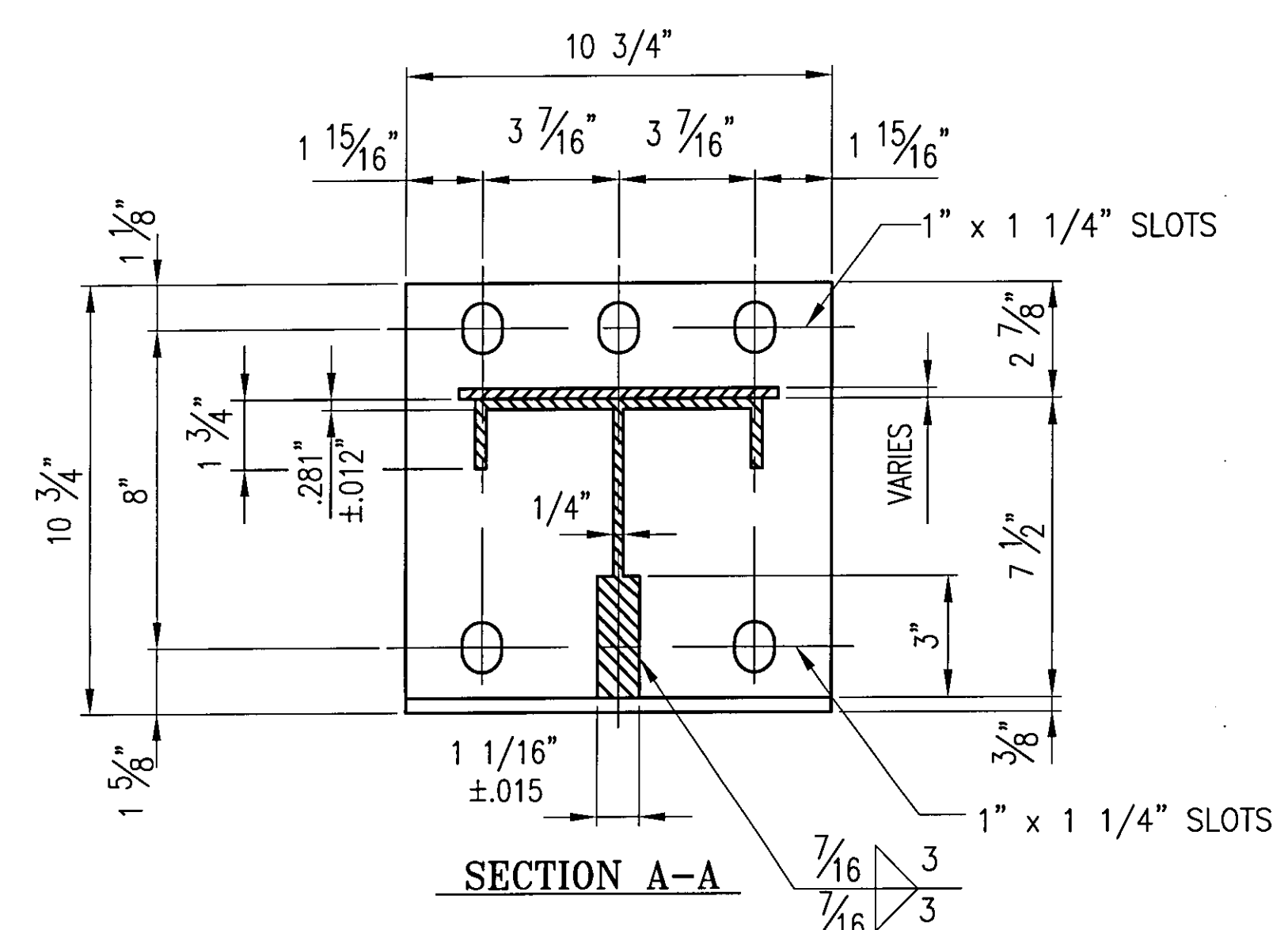
ANODIZED

- ALL ALUM. COMPONENTS SHALL BE ANODIZED TO A BLACK (HARD SATIN FINISH) COLOR, FED. STD. COLOR No. 27038. THE ANODIC COATING SHALL BE ARCHITECTURAL CLASS I WITH A MIN. THICKNESS OF 0.7 mils AND A MIN. WEIGHT OF 35 mg/sq in
- ALL VISIBLE STN. STL. HARDWARE SHALL BE FIELD PAINTED BLACK TO MATCH THE ANODIZED RAIL. TOUCH UP PAINT SHALL BE PROVIDED.
- SAMPLES SHALL BE SUBMITTED FOR THE ENGINEER'S APPROVAL.

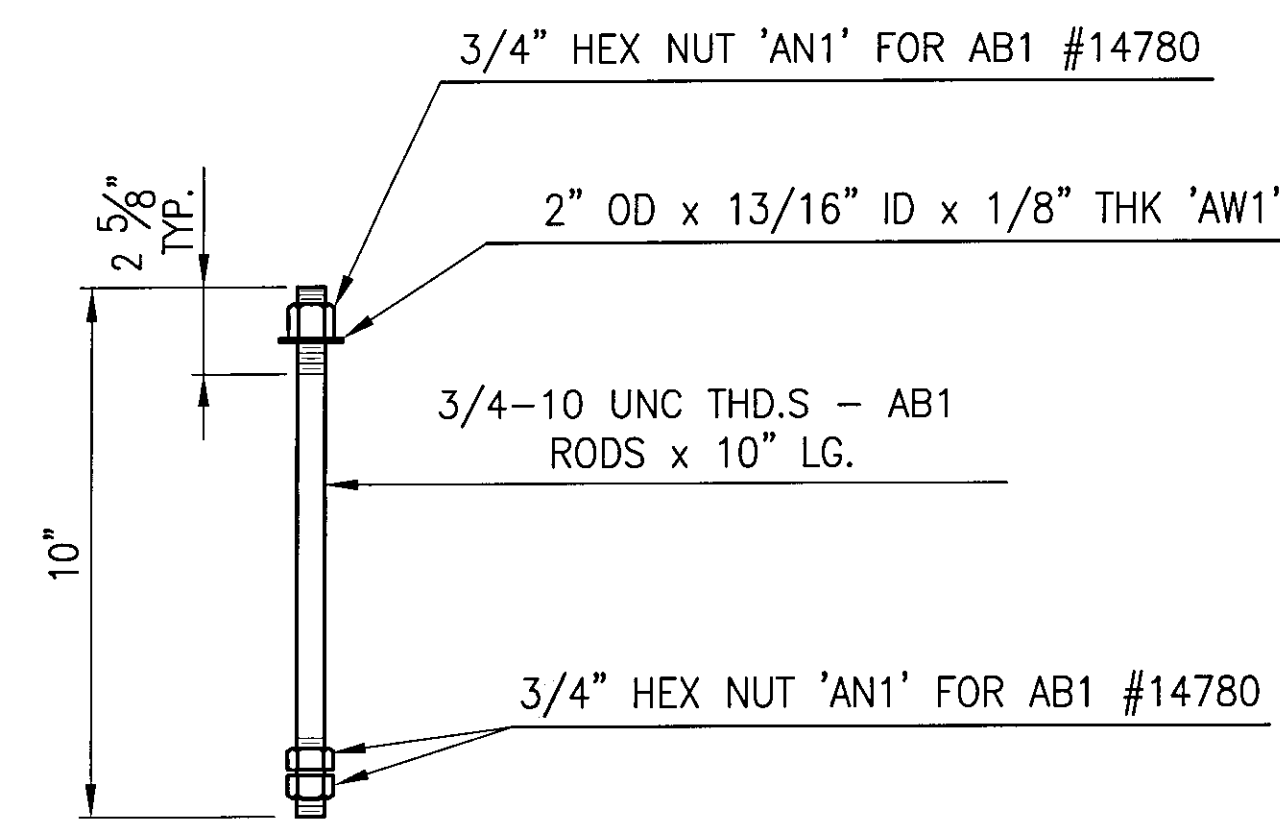
Accepted	Accepted as Noted
Accepted Noted Resubmit	Accepted Noted Resubmit
Rejected - Revise Resubmit	Rejected - Revise Resubmit
Rejected - Unacceptable	Rejected - Unacceptable

Checking is only for conformance with the design concept of the Project and compliance with the information given in the Contract Documents. The Engineer assumes no liability for errors or omissions that may be contained herein. The Contractor, by approving and submitting these documents, verifies their accuracy as stipulated on the Contractor's Shop Drawing Stamp.

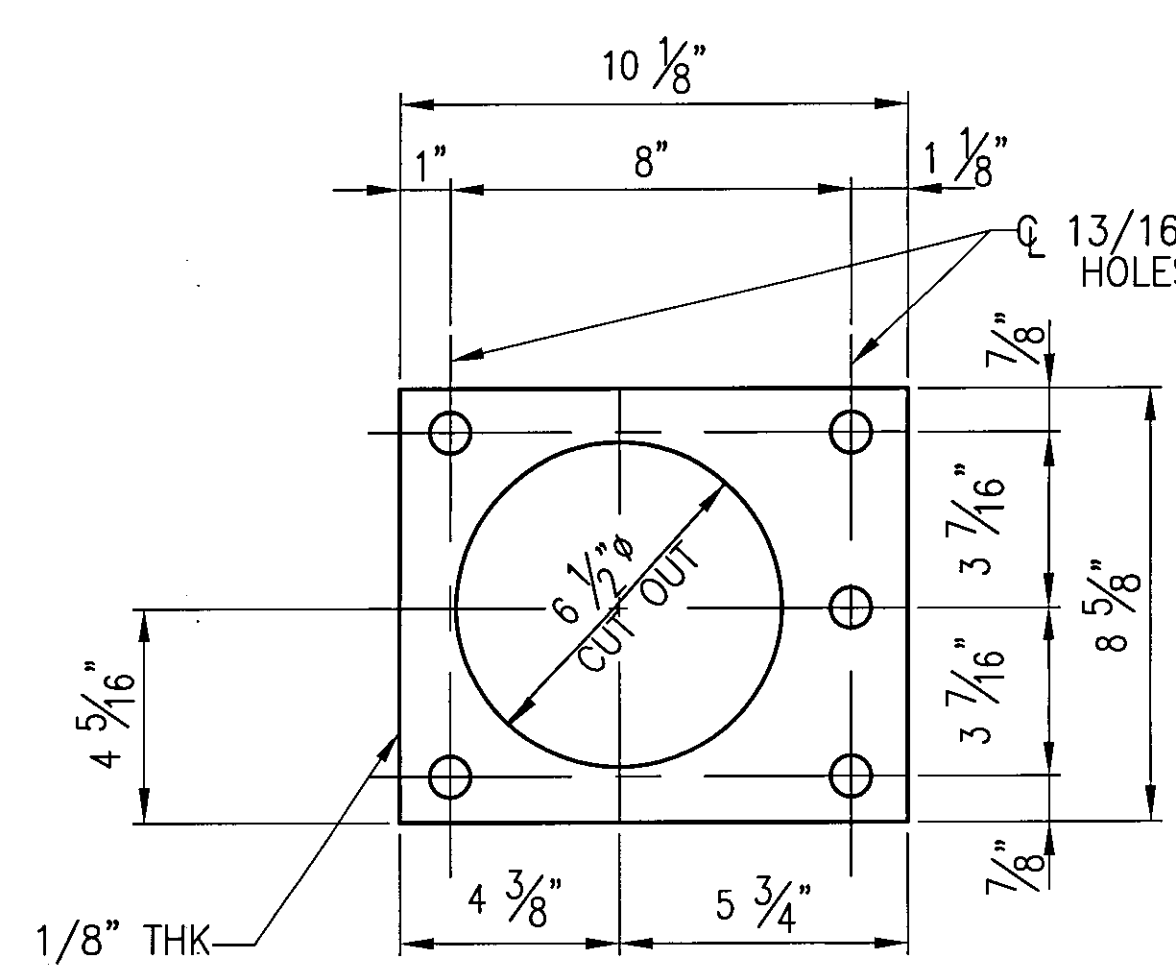
Date: 9/25/09 By: DuBOIS AND KING / EPD



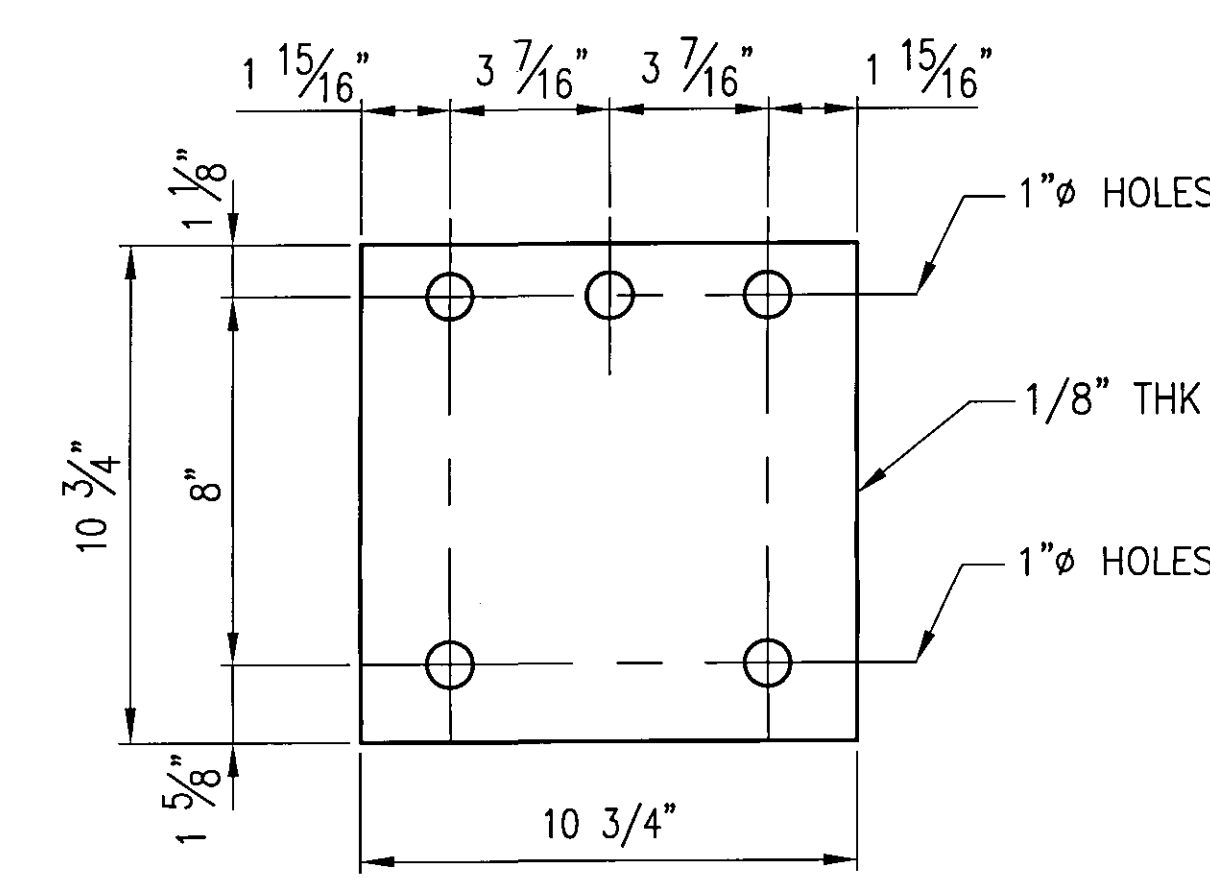
SECTION A-A



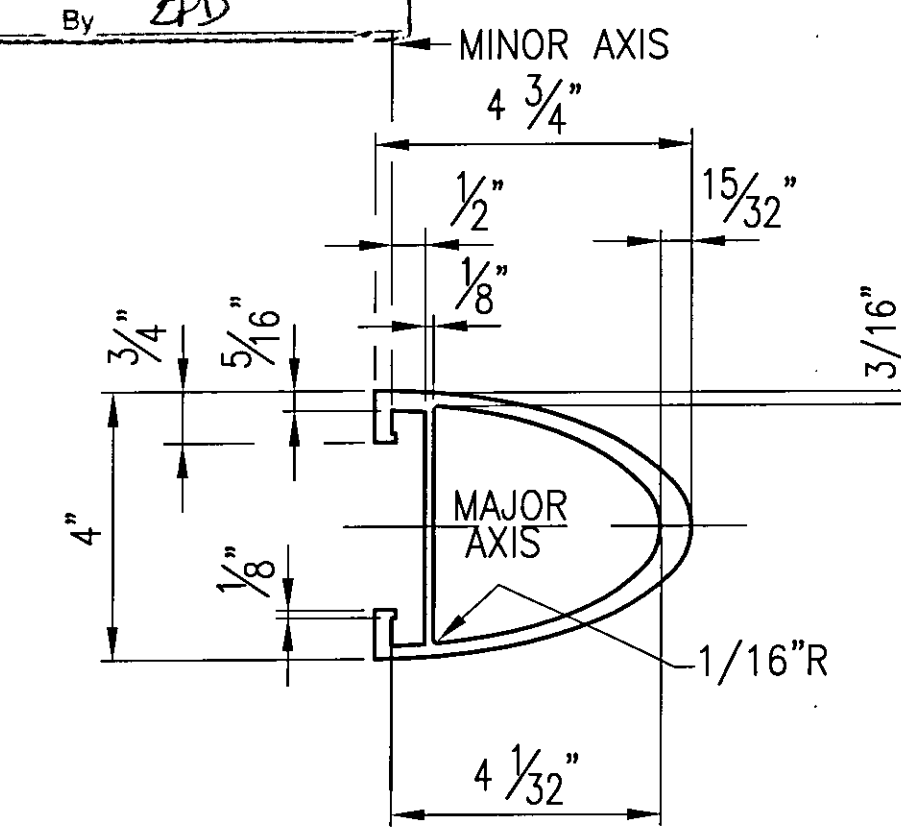
35 ~ REQ'D ANCHOR BOLTS AB1



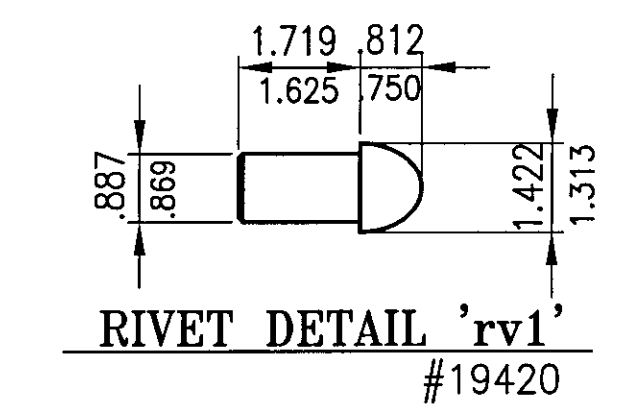
7 ~ REQ'D ANCHOR P. AP1



7 ~ REQ'D ELASTOMERIC PADS 'EP1'



TYPICAL SECTION THRU RAIL



RIVET DETAIL 'rv1'
#19420

BRIDGE No. 7
PROJECT No. BHF 6000 (15) S
ITEM No: 900.640

APPROVED:	REC'D APPROVAL
DRAWING	
L.B. FOSTER COMPANY 1016 GREENTREE ROAD PITTSBURGH, PENNSYLVANIA 15220	
FOR: F. R. LAFAYETTE, INCORPORATED VERMONT DEPARTMENT OF TRANSPORTATION CITY OF BARRE, COUNTY OF WASHINGTON - BURNHAM STREET CORNER DETAIL - BRIDGE RAILING FOR PROSPECT ST. OVER STEVENS BRANCH 2L ALUMINUM RAILING ~ GENERAL NOTES AND TYP. DETAILS	
MADE CMS DATE 06/26/09 JOB No. AR0569 CUST. No.	CHECK BLJ DATE 07/06/09 DRAWING LB1 REV. No.

REV.	DESCRIPTION	BY	DATE