

SAWCUT AND REMOVE EXISTING CONCRETE TO CREATE SQUARE JOINT. PAYMENT FOR SAWCUTTING SHALL BE INCIDENTAL TO THE CONCRETE ITEM.

MATCH NEW TOP OF CURB ELEVATION WITH EXISTING CONCRETE SIDEWALK IN THIS AREA

EXISTING CONCRETE SIDEWALK

PROPOSED CONCRETE, HIGH PERFORMANCE CLASS B CURB

DETAIL A

SCALE 3/8" = 1'-0"



EXISTING PAVEMENT TO BE REMOVED IN THIS AREA AS PART OF SIDEWALK RECONSTRUCTION.

EXISTING CONCRETE SIDEWALK

SEE DETAIL A THIS SHEET

BURNHAM STREET

SPECIAL PROVISION (ALUMINUM RAILING, ANODIZED 2 RAIL)

APPROX. R.O.W.

30+25

30+50

PROPOSED SIDEWALK ALIGNMENT

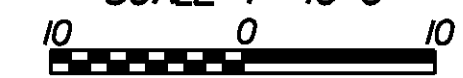
5-INCH PORTLAND CEMENT CONCRETE SIDEWALK

PROSPECT STREET (T.H. NO. 7)

2+00

PLAN

SCALE 1" = 10'-0"



PROVIDE 2" GAP BETWEEN END OF RAIL AND EXTERIOR FACE OF BUILDING, (TYP.)

EXISTING CONCRETE SIDEWALK TO REMAIN

PAVE AREA WITH 3" BITUMINOUS CONCRETE PAVEMENT, GRADE TO DRAIN (TYP.)

PAVEMENT TO BE FLUSH WITH TOP OF CURB

SPECIAL PROVISION (ALUMINUM RAILING, ANODIZED 2 RAIL)

PROPOSED FINISHED GRADE BURNHAM STREET

EXISTING GRADE

1'-0" ALL AROUND

36" EMBEDMENT MIN. (TYP.)

FILL AREA WITH SUBBASE OF GRAVEL, REMOVE EXISTING PAVEMENT IN THIS AREA

GRANULAR BACKFILL FOR STRUCTURES

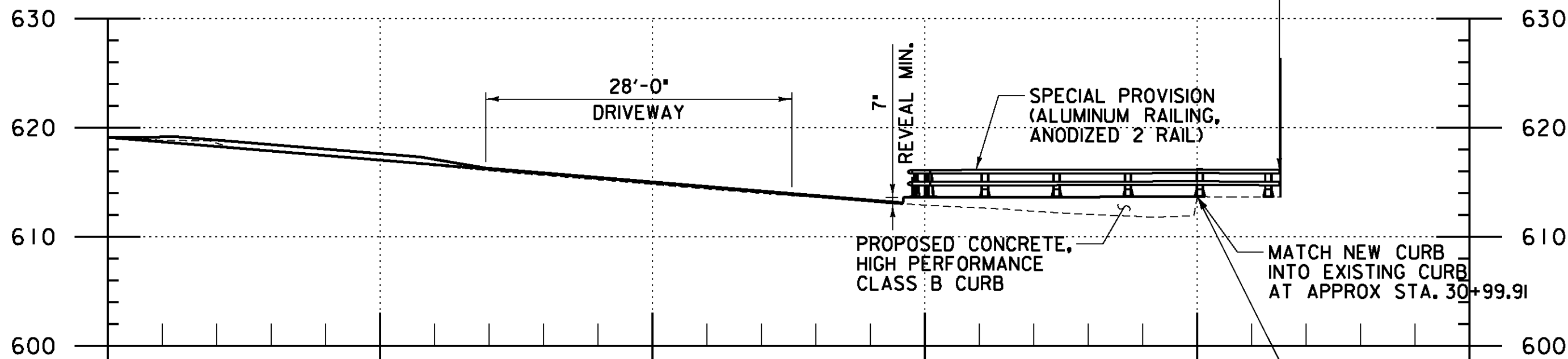
SECTION A - A

SCALE 3/8" = 1'-0"



NEW CONCRETE, HIGH PERFORMANCE CLASS B CURB STA. 30+72.98 - STA. 30+99.91

ELEV. NAVD 88



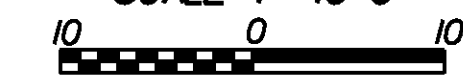
ELEV. NAVD 88

PROPOSED SIDEWALK ALIGNMENT

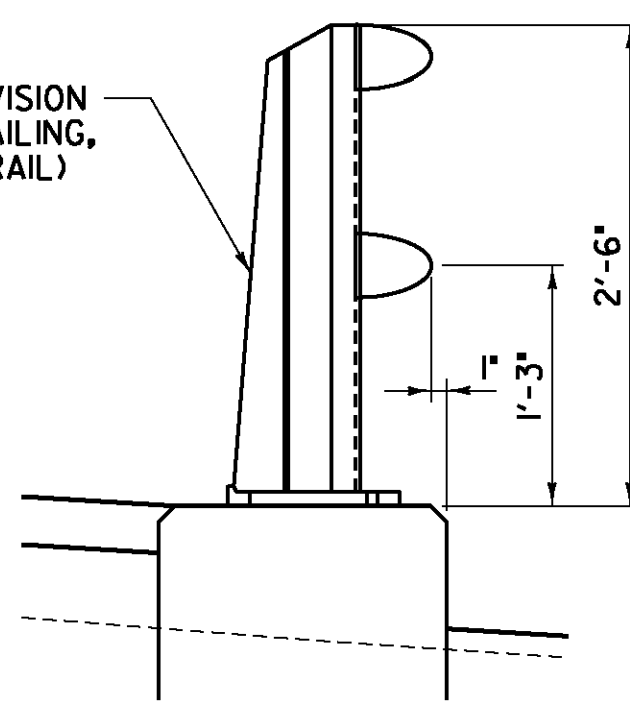
MATCH TOP OF NEW CURB ELEVATION WITH EXISTING CONCRETE SIDEWALK IN THIS AREA.

PROFILE

SCALE 1" = 10'-0"



SPECIAL PROVISION (ALUMINUM RAILING, ANODIZED 2 RAIL)



SPECIAL PROVISION (ALUMINUM RAILING, ANODIZED 2 RAIL) SECTION

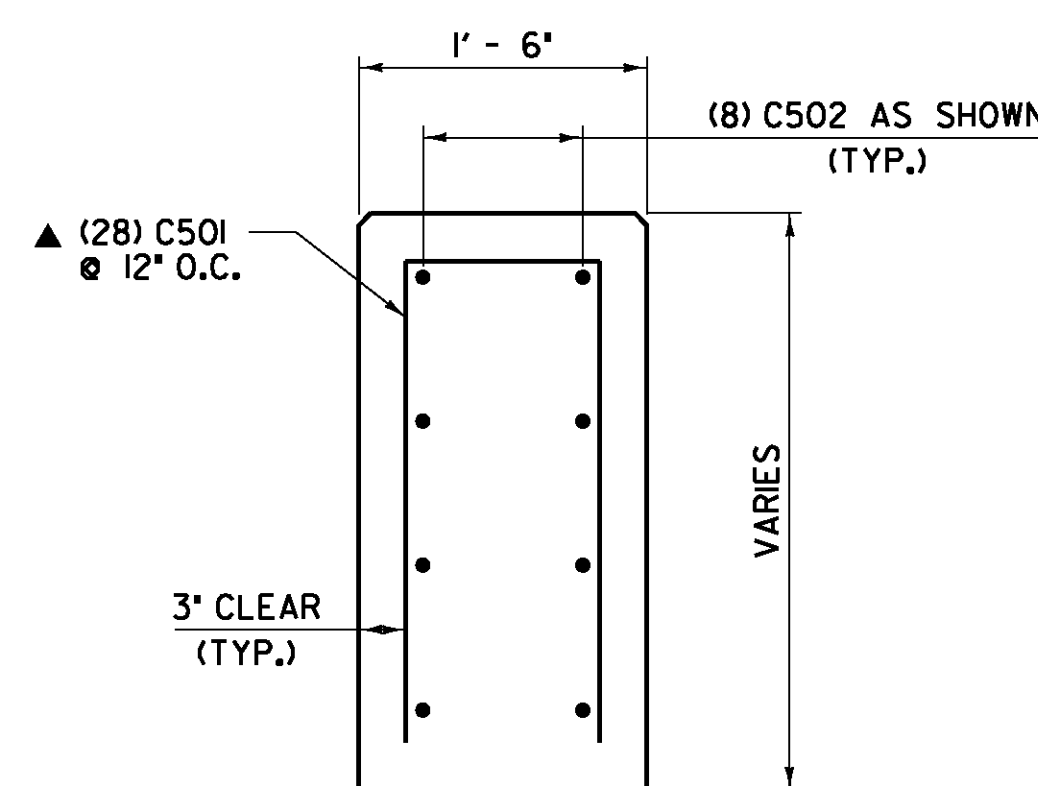
SCALE 1" = 1'-0"



PLOTTED 2/11/2009

LEGEND

- EXISTING EDGE OF RIVER
- EXISTING TRAVELED WAY
- EXISTING GUARD RAIL
- STORM DRAIN
- SIDEWALK RAMP
- UTILITY POLE
- TELEPHONE POLE
- TREES
- OVERHEAD LINES
- WATER LINE
- EXISTING SIGN
- SEWER LINE
- RIGHT OF WAY
- SEWER MANHOLE
- WATER MANHOLE
- WATER SHUTOFF
- GAS SHUTOFF



CONCRETE CURB REINFORCING DETAIL

SCALE 1" = 1'-0"



NOTES

1. REMOVAL OF EXISTING CONCRETE SIDEWALK SHALL BE PAID FOR UNDER ITEM 203.16 "SOLID ROCK EXCAVATION". REMOVAL OF EXISTING BITUMINOUS CONCRETE PAVEMENT SHALL BE PAID FOR UNDER ITEM 203.28 "EXCAVATION OF SURFACES AND PAVEMENTS".
2. REFER TO SHEETS 39-41 FOR ADDITIONAL DETAILS FOR SPECIAL PROVISION (ALUMINUM RAILING, ANODIZED 2 RAIL).

STATE OF VERMONT AGENCY OF TRANSPORTATION

Town Of	BARRE CITY	Bridge No.	7
Highway No.	PROSPECT ST.	Log Sta.	
		Surv. Sta.	

PROSPECT ST. OVER STEVENS BRANCH BURNHAM STREET CORNER DETAIL

Designed By	A.P. GUYETTE	Drawn By	A.P. GUYETTE
Checked By	Date	Bridge Design Supervisor	Date
E. P. DETRICK	1/09	J. W. TUCKER	1/09

PROJECT	BARRE CITY	PROJECT NO.	BHF 6000 (15) S
---------	------------	-------------	-----------------

I.G.C. info.	
Bridge Sheet No.	Sheet 38 of 56

DuBois & King
 engineering planning management development