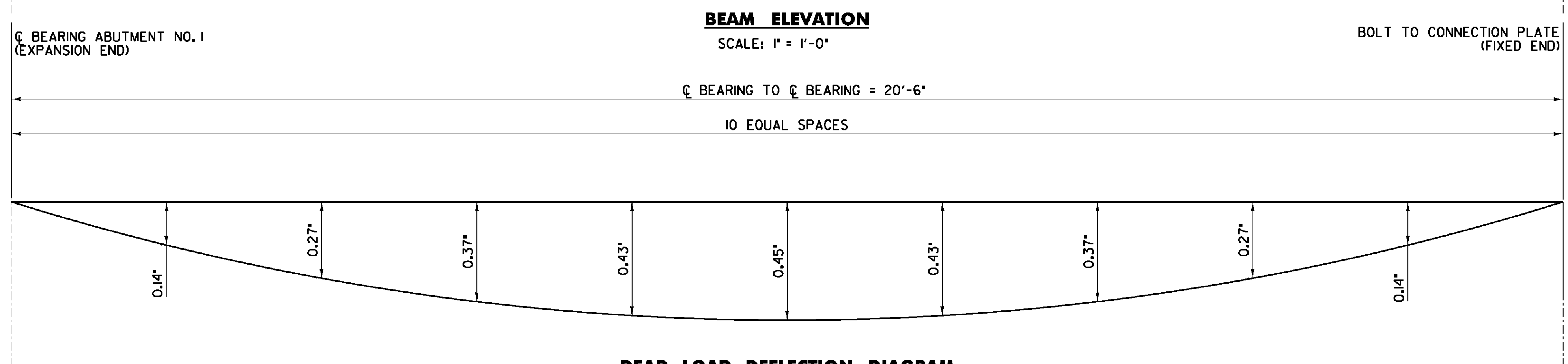
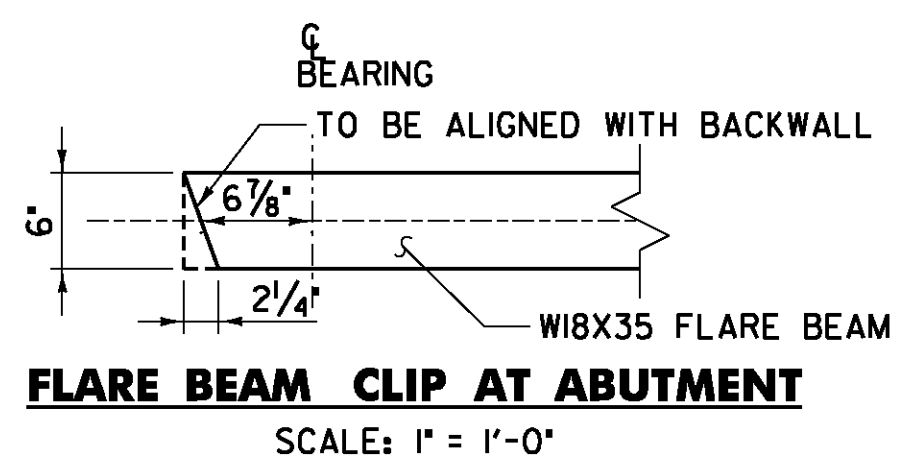
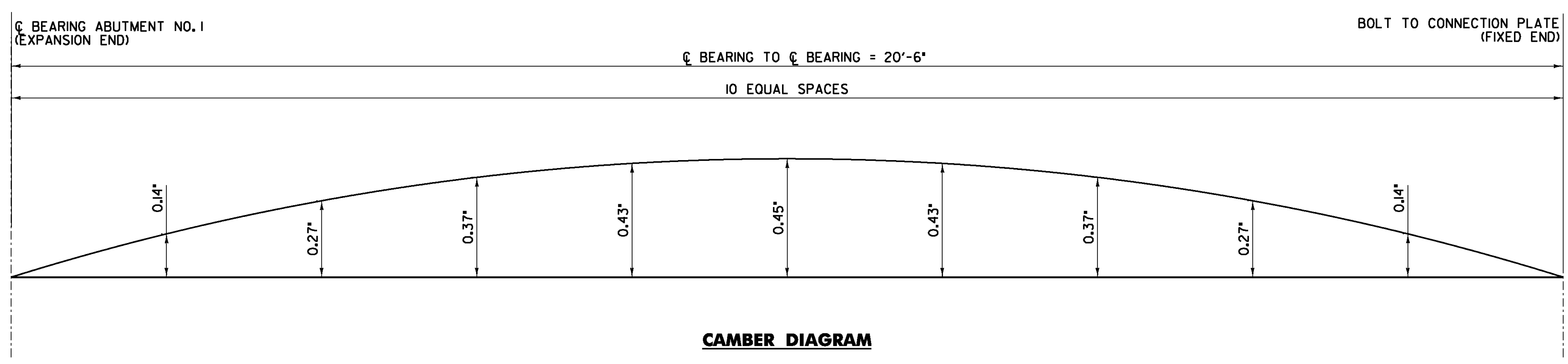
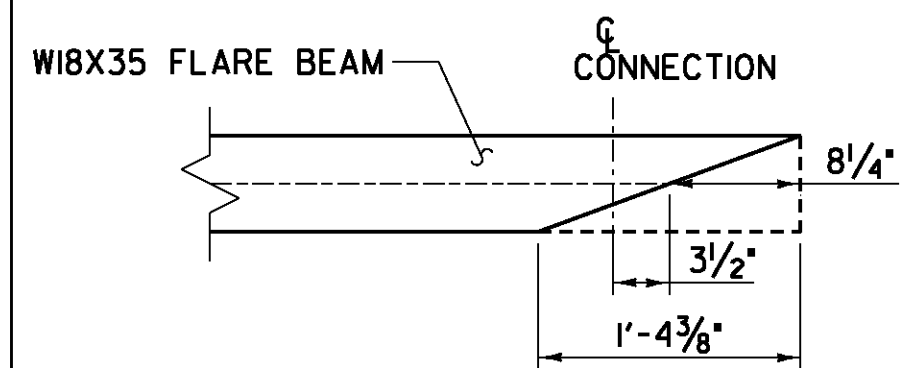


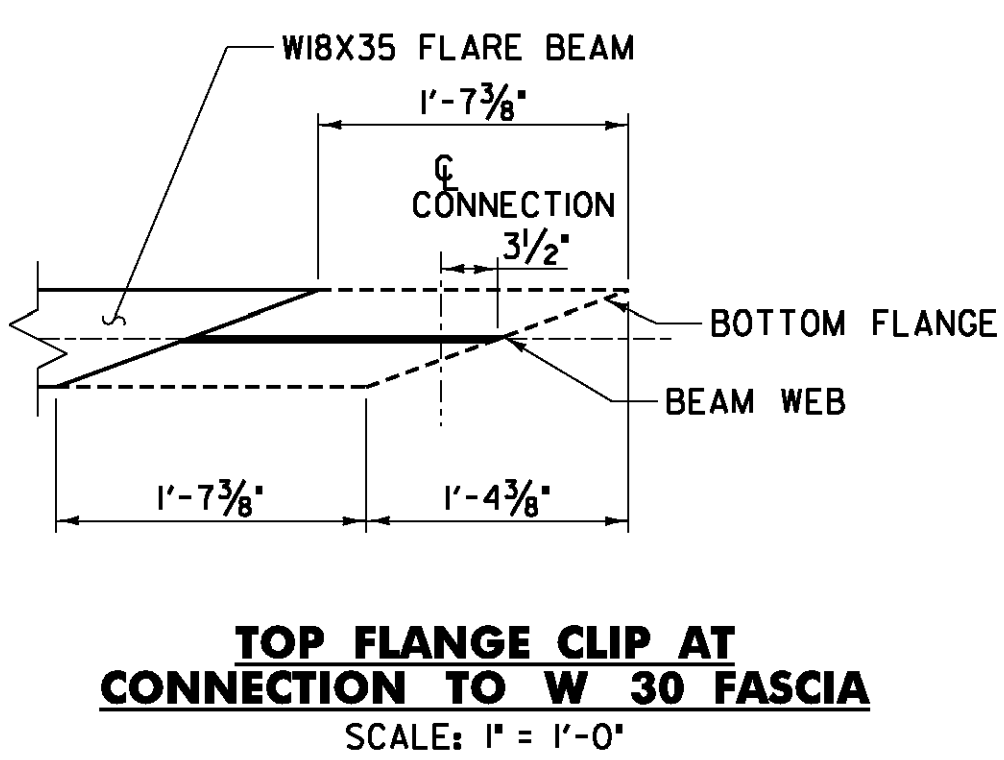
- NOTES:**
1. CONNECTION PLATES SHALL BE PERPENDICULAR TO THE FLANGES AFTER APPLICATION OF ALL DEAD LOADS.
  2. ENDS OF THE BEAMS SHALL BE FABRICATED SO THAT THEY WILL BE PLUMB UNDER FULL DEAD LOAD.
  3. CVN = CHARPY V-NOTCH REQUIRED PER SPECIFICATION.



**DEAD LOAD DEFLECTION DIAGRAM**  
SCALE : H : 1" = 1'-0"  
V : NOT TO SCALE

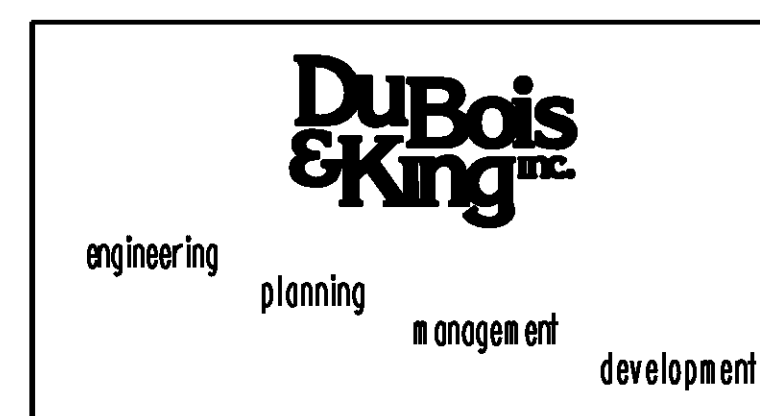


**CAMBER DIAGRAM**  
SCALE : H : 1" = 1'-0"  
V : NOT TO SCALE



**NOTE:**  
DEAD LOAD DEFLECTIONS INCLUDE ALL DEAD LOADS AND SUPERIMPOSED DEAD LOADS INCLUDING BEAM AND DIAPHRAGM WEIGHTS.

<b>STATE OF VERMONT AGENCY OF TRANSPORTATION</b>		
Town Of	BARRE CITY	Bridge No. 7
Highway No.	PROSPECT ST.	Log Sta. Surv. Sta.
<b>PROSPECT ST. OVER STEVENS BRANCH FLARE BEAM ELEVATION AND DETAILS</b>		
Designed By	A.P. GUYETTE	Drawn By R.H. BARNES
Checked By	Date	Bridge Design Supervisor
E. P. DETRICK	1/09	J. W. TUCKER Date 1/09
PROJECT	BARRE CITY	PROJECT NO. BHF 6000 (15) S
I.G.C. info.		
Bridge Sheet No.		Sheet 30 of 56



PLOTTED 2/2/2009