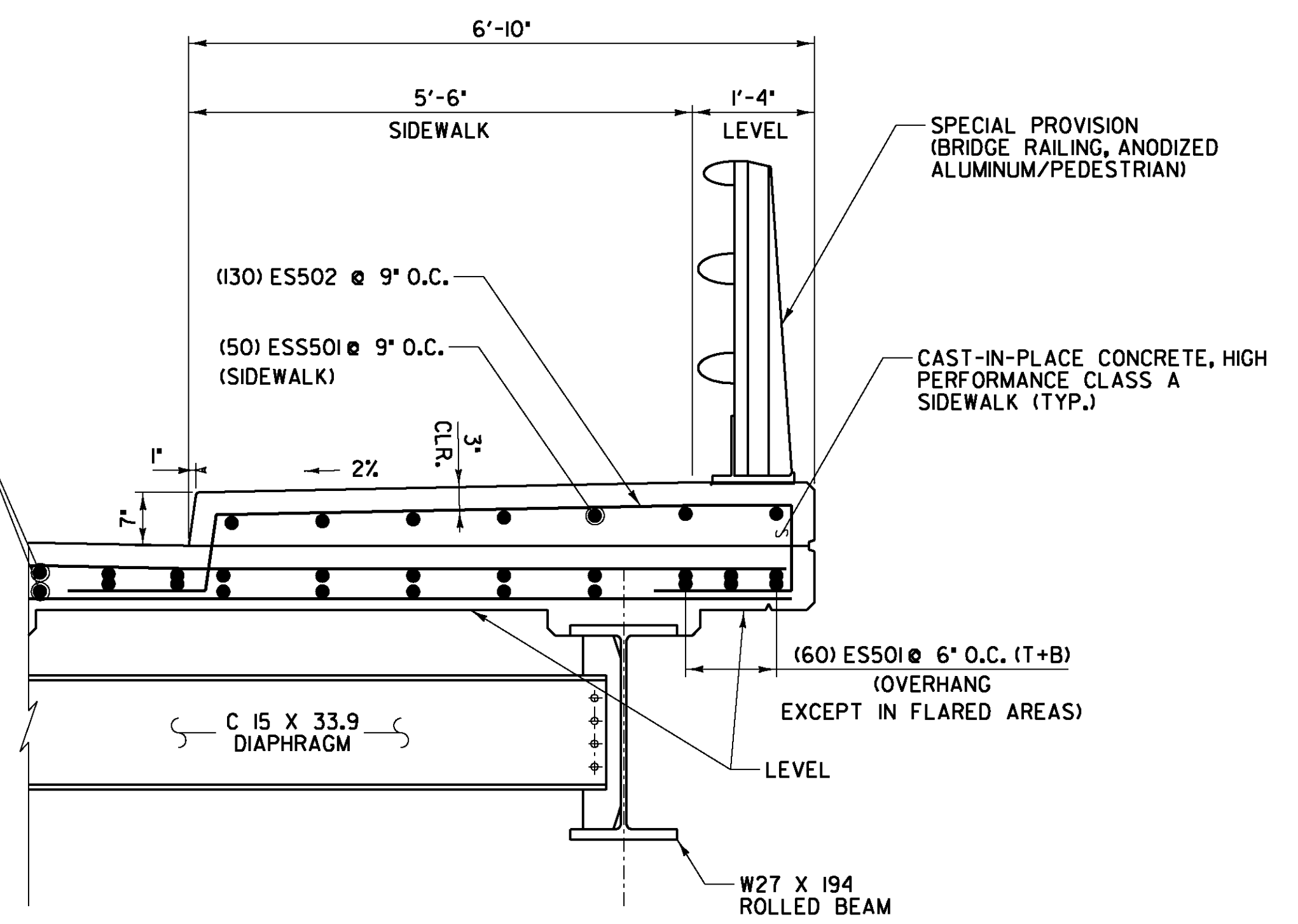


**DECK SECTION**  
SCALE 3/8" = 1'-0"

.. DIMENSION VARIES AT DECK FLARES  
NOTE: SEE SHEET 14 FOR WATERLINE SUPPORT DETAILS

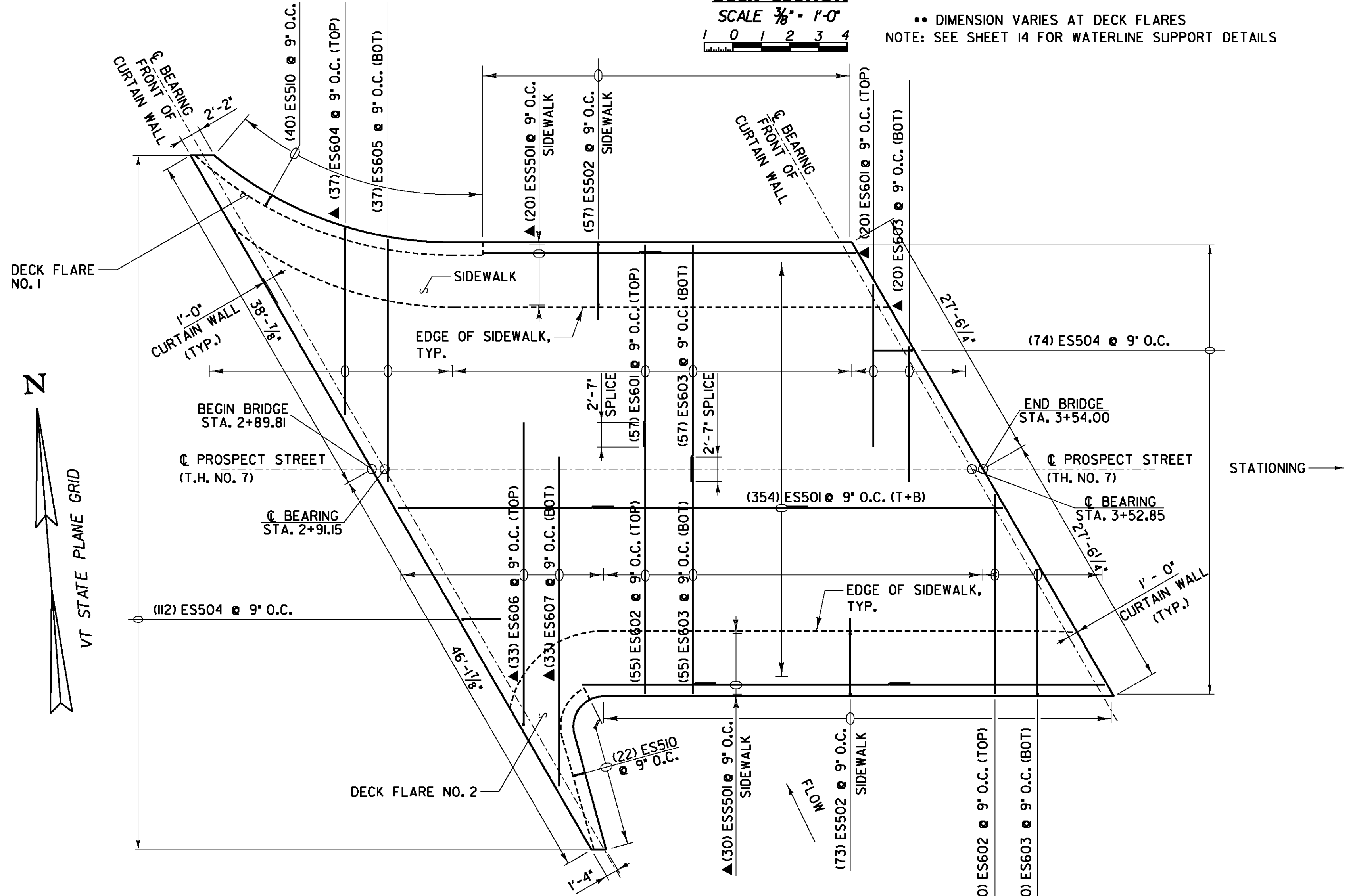
SPECIAL PROVISION  
(BRIDGE RAILING, ANODIZED  
ALUMINUM/PEDESTRIAN)



**SIDEWALK DETAIL**  
SCALE 1/2" = 1'-0"

**NOTES:**

1. MINIMUM SPLICE DISTANCE SHALL BE 2' - 2" FOR #5 BARS, AND 2' - 7" FOR #6 BARS.
2. ES601 AND ES602 SHALL BE PLACED ALTERNATING WITH THE SPLICE ALTERNATING BETWEEN BAY 3 AND BAY 4.
3. SEE SHEET 26 AND 27 FOR ADDITIONAL REINFORCING DETAILS OF THE DECK ENDS AND FLARES.
4. CONTRACTOR SHALL FILL EXPANSION JOINT BETWEEN DECK SIDEWALK AND STREET SIDEWALK WITH POLYURETHANE FILLER MATERIAL PER SUBSECTION 524.06(c), COST SHALL BE INCIDENTAL TO DECK CONCRETE.

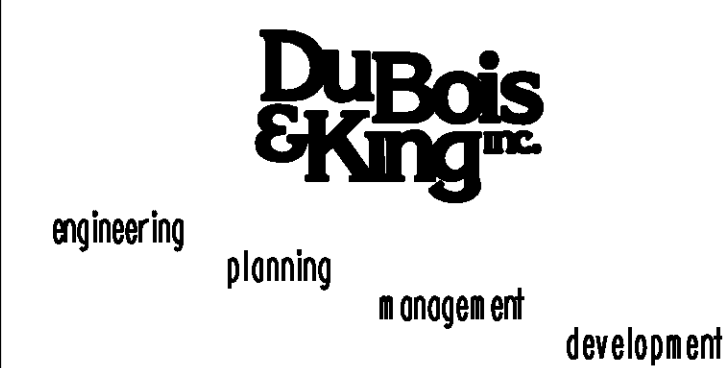


**DECK PLAN**  
SCALE 1/8" = 1'-0"

**KEY**  
N.F. = NEAR FACE  
F.F. = FAR FACE  
E.F. = EACH FACE  
S = DECK OR SLAB  
A = ABUTMENT  
C = CURBING  
▲ = CUT TO FIT IN FIELD  
T + B = TOP AND BOTTOM

**STATE OF VERMONT  
AGENCY OF TRANSPORTATION**

Town Of	BARRE CITY	Bridge No.	7
Highway No.	PROSPECT ST.	Log Sta.	
		Surv. Sta.	
<b>PROSPECT ST. OVER STEVENS BRANCH</b>			
<b>DECK REINFORCEMENT</b>			
Designed By	A.P. GUYETTE	Drawn By	A.P. GUYETTE
Checked By	E. P. DETRICK	Bridge Design Supervisor	J. W. TUCKER
	Date 1/09	Date	1/09
PROJECT	BARRE CITY	PROJECT NO.	BHF 6000 (15) S
I.G.C. info.			
Bridge Sheet No.		Sheet	25 of 56



PLOTTED 2/2/2009