

REMOVING SIGNS

- STA. 2+46 LT "STOP"
- STA. 2+80 LT "25 MPH" "LOAD LIMIT"
- STA. 2+80 LT "PROSPECT STREET"
- STA. 2+80 LT "BURNHAM STREET"
- STA. 3+02 RT "BROOKLYN STREET"
- STA. 3+09 RT "STOP"
- STA. 3+25 LT "BRIDGE PLAQUE"
(SALVAGE PLAQUE TO CITY OF BARRE)
- STA. 3+43 LT "METRO WAY"
- STA. 3+43 LT "CURVE WARNING"
- STA. 4+78 RT "RAIL ROAD CROSSING"
- STA. 4+95 RT "YIELD TO PEDESTRIANS"

ERECTING SALVAGED SIGNS

- STA. 2+38 LT "PROSPECT STREET"
- STA. 2+38 LT "BURNHAM STREET"
- STA. 3+17 RT "BROOKLYN STREET"
- STA. 3+37 LT "METRO WAY"

TRAFFIC SIGNS, TYPE A

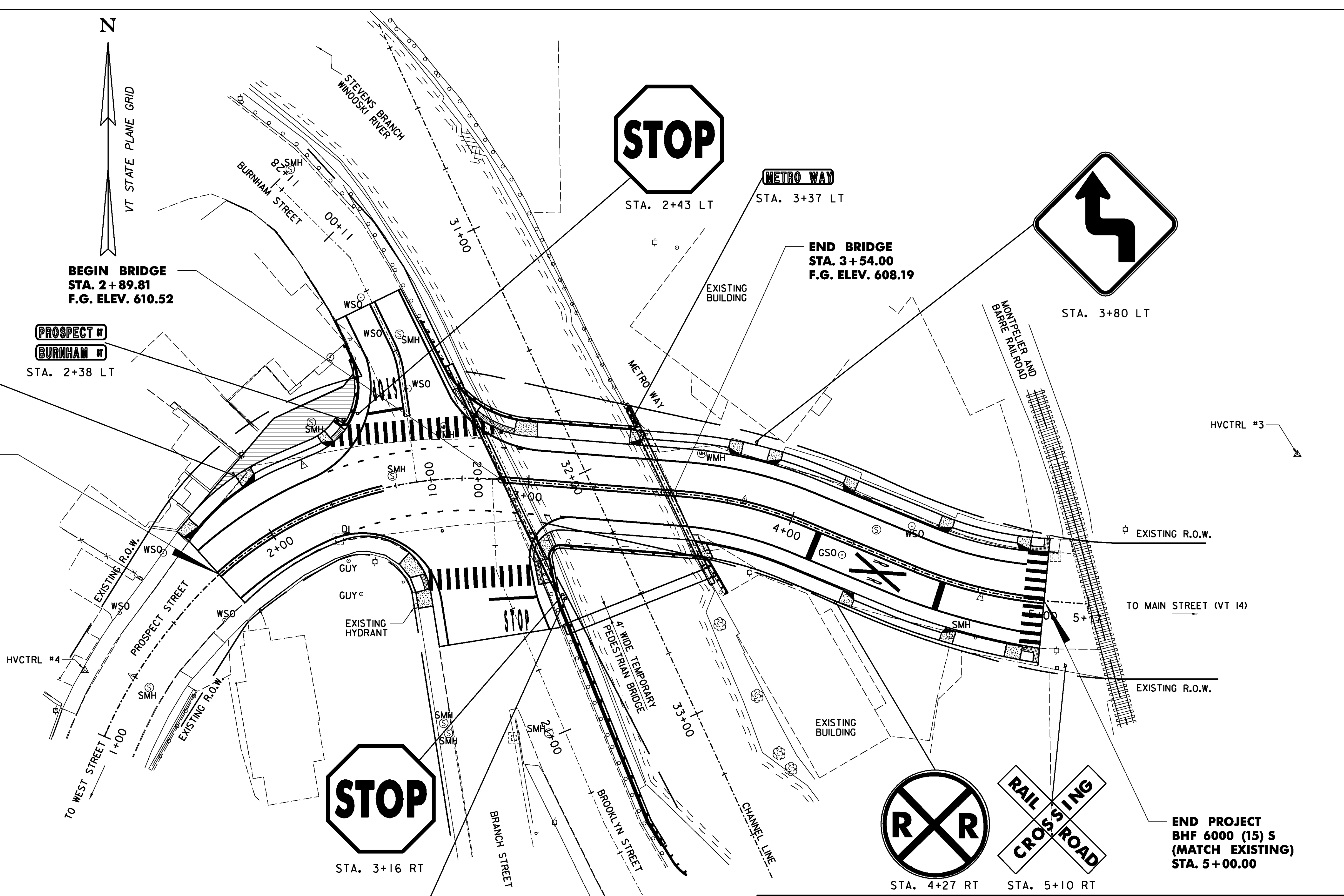
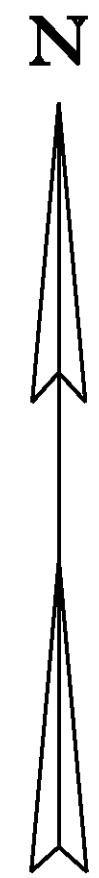
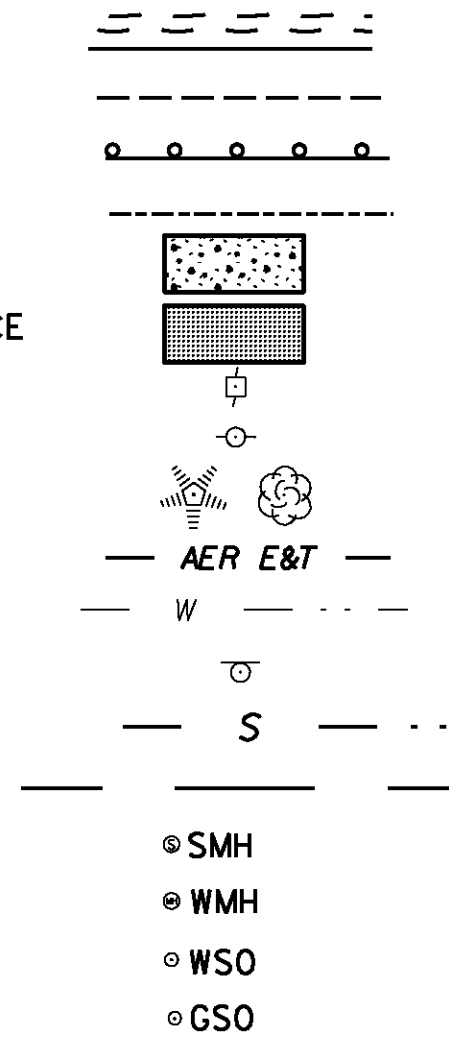
- STA. 2+43 LT "STOP"
- STA. 2+00 LT "25 MPH" "LOAD LIMIT"
- STA. 3+16 RT "STOP"
- STA. 3+80 LT "CURVE WARNING"
- STA. 4+27 RT "RAIL ROAD CROSSING"
- STA. 5+10 RT "RAIL ROAD CROSSBUCKS"

**SPEED
LIMIT
25**

**LEGAL LOAD
LIMIT
16,000
POUNDS**

LEGEND

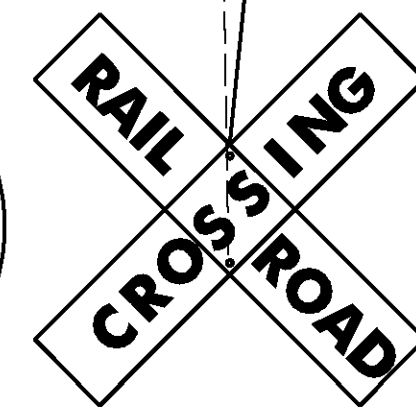
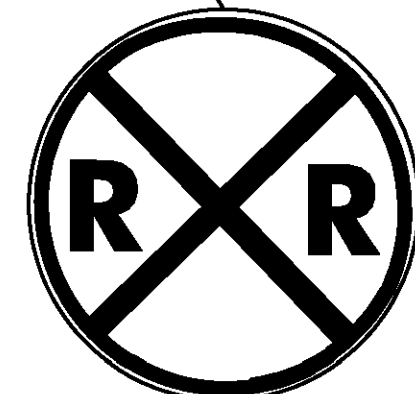
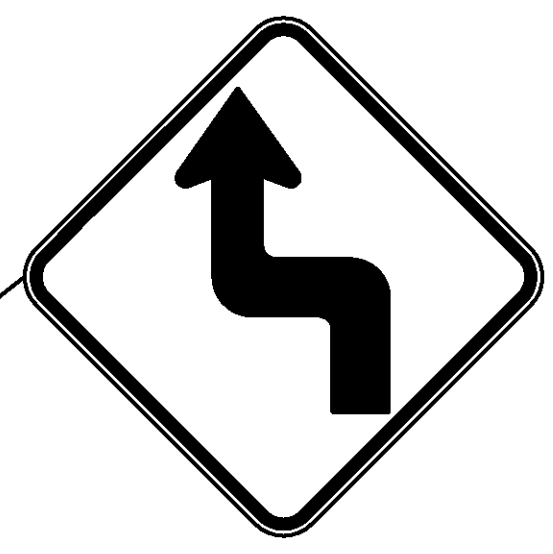
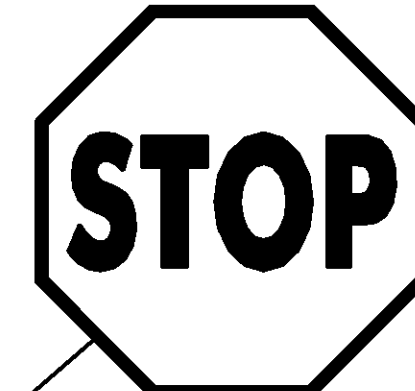
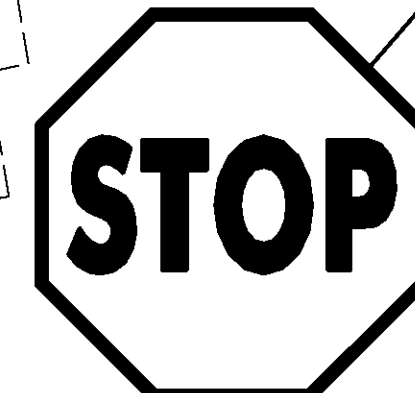
- EXISTING EDGE OF RIVER
- EXISTING TRAVELED WAY
- EXISTING GUARD RAIL
- STORM DRAIN
- SIDEWALK RAMP
- DETECTABLE WARNING SURFACE
- UTILITY POLE
- TELEPHONE POLE
- TREES
- OVERHEAD LINES
- WATER LINE
- EXISTING SIGN
- SEWER LINE
- RIGHT OF WAY
- SEWER MANHOLE
- WATER MANHOLE
- WATER SHUTOFF
- GAS SHUTOFF



**BEGIN BRIDGE
STA. 2+89.81
F.G. ELEV. 610.52**

**BEGIN PROJECT
BHF 6000 (15) S
(MATCH EXISTING)
STA. 1+75.00**

**END PROJECT
BHF 6000 (15) S
(MATCH EXISTING)
STA. 5+00.00**



NOTES:
1. FOR DETAILS AND LOCATION OF NEW AND SALVAGED SIGNS SEE SHEET 15B.

PLAN
SCALE 1" = 20'-0"
20 0 20

REVISIONS		
NO.	DESCRIPTION	BY & DATE

**STATE OF VERMONT
AGENCY OF TRANSPORTATION**

Town Of	BARRE CITY	Bridge No.	7
Highway No.	PROSPECT ST.	Log Sta.	
		Surv. Sta.	
PROSPECT ST. OVER STEVENS BRANCH			
TRAFFIC SIGN LAYOUT SHEET			
Designed By	A. P. GUYETTE	Drawn By	S. J. BIJOLLE
Checked By	E. P. DETRICK	Date	10/08
		Bridge Design Supervisor	J. W. TUCKER
		Date	10/08
PROJECT	BARRE CITY	PROJECT NO.	BHF 6000 (15) S
I.G.C. info.			
Bridge Sheet No.		Sheet	15A of 56

DuBois & King
INC.
engineering planning management development

PLOTTED 2/11/2009