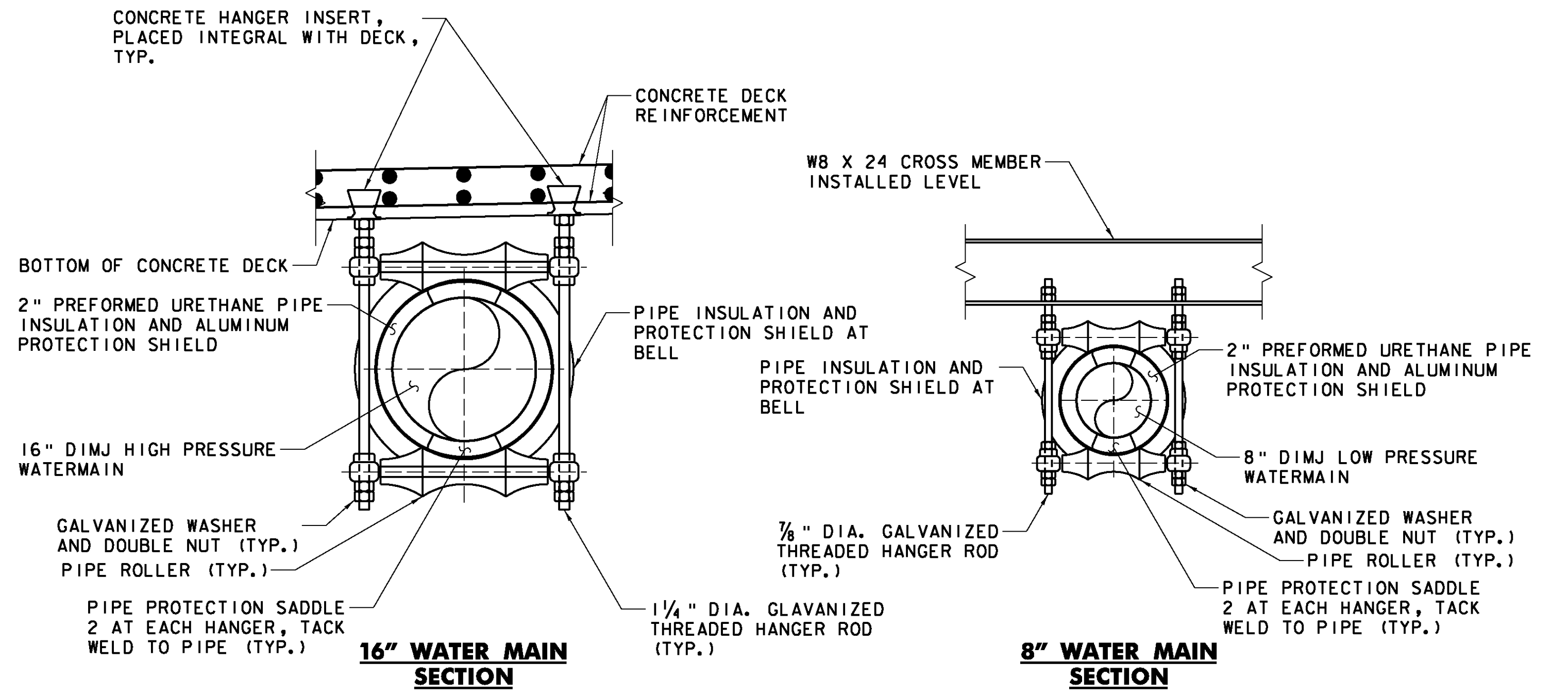


BRIDGE SECTION
SCALE 1/4" = 1'-0"
1 0 2 4 6

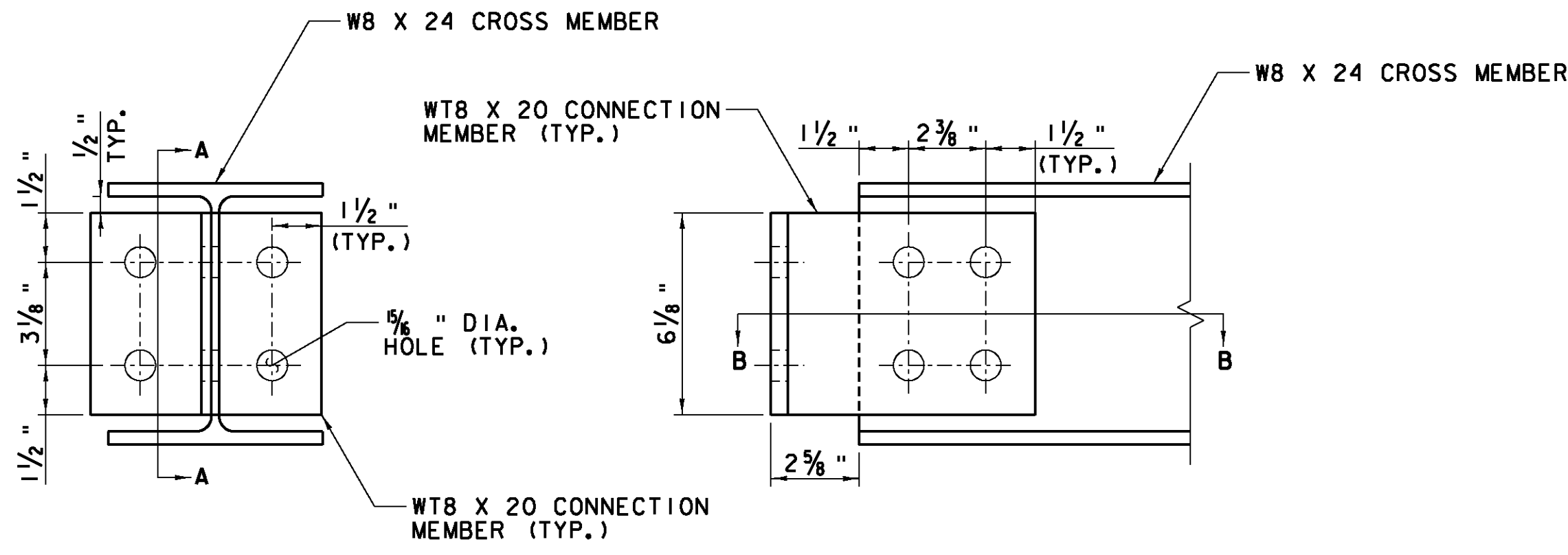
NOTE:
SEE FRAMING PLAN, SHEET 28 FOR LOCATIONS OF THE WATERLINE SUPPORTS.



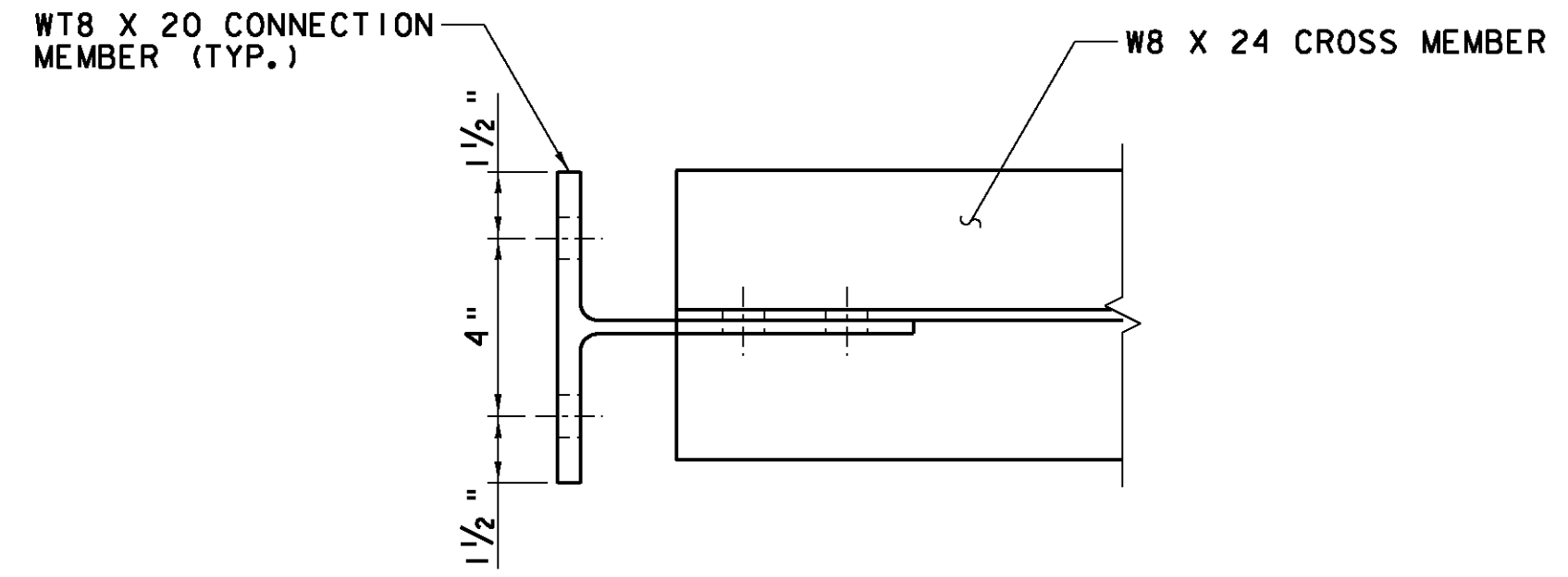
SCALE 3" = 1'-0"
1 9 6 3 0

SCALE 3" = 1'-0"
1 9 6 3 0

NOTE:
1. FINAL LOCATION OF PIPE SUPPORTS SHALL BE FIELD LOCATED IN RELATION TO THE PIPE JOINTS IN ACCORDANCE WITH THE MANUFACTURER'S RECOMMENDATIONS.



SECTION A-A



SECTION B-B

CONNECTION PLATE AND CROSS MEMBER DETAIL

SCALE 3" = 1'-0"
1 9 6 3 0

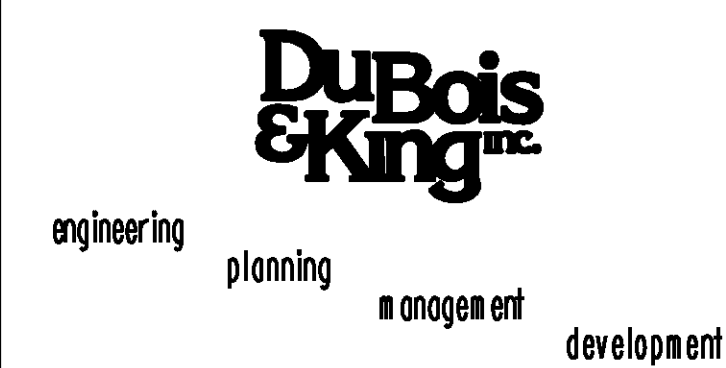
NOTES:
1. BOLTED FIELD CONNECTIONS SHALL BE MADE WITH AASHTO M 164M 7/8" HIGH-STRENGTH BOLTS, TYPE 3.
2. CONNECTION HOLES IN THE W30 WEB SHALL BE FIELD DRILLED.

WATER LINE INSTALLATION NOTES:

1. THE WATER LINE CONSTRUCTION SHALL TAKE PLACE IN ACCORDANCE WITH INFORMATION SHOWN ON THESE PLANS, THE NON-PARTICIPATING UTILITY PLANS, AND THE VTRANS STANDARD SPECIFICATIONS FOR CONSTRUCTION INCLUDING ALL SUPPLEMENTAL AND SPECIAL PROVISIONS.
2. ALL WATER LINES ON THE BRIDGE SHALL USE RESTRAINED MECHANICAL JOINTS. THE LOW PRESSURE PIPE SHALL USE MEGA-LUG SERIES 1100 RETAINER GLANDS OR APPROVED EQUAL. THE HIGH PRESSURE PIPE SHALL USE MEGA-LUG SERIES 1100 TDM RETAINER GLANDS OR APPROVED EQUAL.
3. A MANUAL AIR RELEASE SHALL BE INSTALLED AT THE HIGH POINT OF BOTH WATER LINES ON THE BRIDGE. THE COSTS SHALL BE INCIDENTAL TO THE WATER MAIN ON BRIDGE ITEMS.
4. THE 16" AND 8" WATER LINES SUSPENDED FROM THE BRIDGE, PASSING THROUGH THE BACKWALLS AND EXTENDING DOWNWARD AT 45°, UP TO AND INCLUDING THE SECOND LOWER 45° FITTING, SHALL BE CONSIDERED PART OF THE PARTICIPATING PROJECT COSTS. ALL PIPE, FITTINGS, JOINT RESTRAINTS, HARDWARE, BRIDGE HANGERS, CONCRETE INSERTS, SLEEVES, PIPE SUPPORTS, LINK-SEAL, INSULATION AND OTHER ITEMS REQUIRED FOR INSTALLATION OF THE WATER LINES, EXCLUDING THE HEAT TRACE AND WT8X20 CONNECTION MEMBERS AND W8X24 CROSS MEMBERS, SHALL BE PAID FOR UNDER ITEM 900.645, SPECIAL PROVISION (WATER MAIN ON BRIDGE) (16") AND ITEM 900.645, SPECIAL PROVISION (WATER MAIN ON BRIDGE) (8") RESPECTIVELY. THE WT8X20 CONNECTION MEMBERS AND W8X24 CROSS MEMBERS SHALL BE PAID FOR AS ITEM 506.50, "STRUCTURAL STEEL, ROLLED BEAM". ALL OTHER WATERLINE WORK, INCLUDING NON-PARTICIPATING AREAS AND THE HEAT TRACE SHALL BE PAID FOR UNDER ITEM 900.645, SPECIAL PROVISION (WATERLINE, MUNICIPAL).
5. CONCRETE AND STEEL REINFORCEMENT USED IN THE PIPE ANCHOR DETAIL, SHOWN ON THE NON-PARTICIPATING UTILITY SHEETS, SHALL BE CONSIDERED A PARTICIPATING COST AND SHALL BE PAID FOR UNDER ITEM 541.25, "CONCRETE, CLASS B" AND ITEM 507.15, "REINFORCING STEEL". REINFORCEMENT IS NOT INCLUDED ON REINFORCING STEEL SCHEDULE, BUT SHALL BE FABRICATED ACCORDING TO NON-PARTICIPATING UTILITY PLANS.

**STATE OF VERMONT
AGENCY OF TRANSPORTATION**

Town Of	BARRE CITY	Bridge No.	7
Highway No.	PROSPECT ST.	Log Sta.	
		Surv. Sta.	
PROSPECT ST. OVER STEVENS BRANCH			
BRIDGE WATERLINE DETAILS			
Designed By	A.P. GUYETTE	Drawn By	A.P. GUYETTE
Checked By	Date	Bridge Design Supervisor	
E. P. DETRICK	1/09	J. W. TUCKER	Date 1/09
PROJECT	BARRE CITY	PROJECT NO.	BHF 6000 (15) S
I.G.C. info.			
Bridge Sheet No.		Sheet	14 of 56



PLOTTED 2/2/2009