

MAINLINE CURVE DATA

CURVE 1 DATA	CURVE 2 DATA	CURVE 3 DATA	CURVE 4 DATA
$\Delta = 15^\circ 02' 52.69''$ RT	$\Delta = 55^\circ 30' 20.00''$ RT	$\Delta = 17^\circ 53' 22.34''$ RT	$\Delta = 18^\circ 11' 57.25''$ LT
D = $33^\circ 42' 12.43''$	D = $40^\circ 55' 32.24''$	D = $38^\circ 11' 50.09''$	D = $33^\circ 42' 12.43''$
R = 170.00'	R = 140.00'	R = 150.00'	R = 170.00'
T = 22.45'	T = 73.67'	T = 23.61'	T = 27.23'
L = 44.65'	L = 135.63'	L = 46.83'	L = 54.00'
E = 1.48	E = 18.20	E = 1.85	E = 2.17
2T-L = 0.25	2T-L = 11.71	2T-L = 0.39	2T-L = 0.46

SIDEWALK CURVE DATA

CURVE 1 DATA	CURVE 2 DATA
$\Delta = 31^\circ 13' 53.29''$ RT	$\Delta = 91^\circ 15' 21.06''$ LT
D = $72^\circ 28' 08.29''$	D = $212^\circ 41' 56.22''$
R = 79.06'	R = 26.94'
T = 22.10'	T = 27.53'
L = 43.10'	L = 42.90'
E = 3.03	E = 11.58
2T-L = 1.10	2T-L = 12.16

DATUM

VERTICAL NAVD 88

HORIZONTAL NAD 83/92

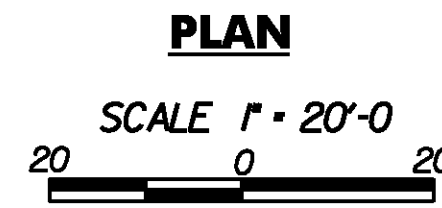
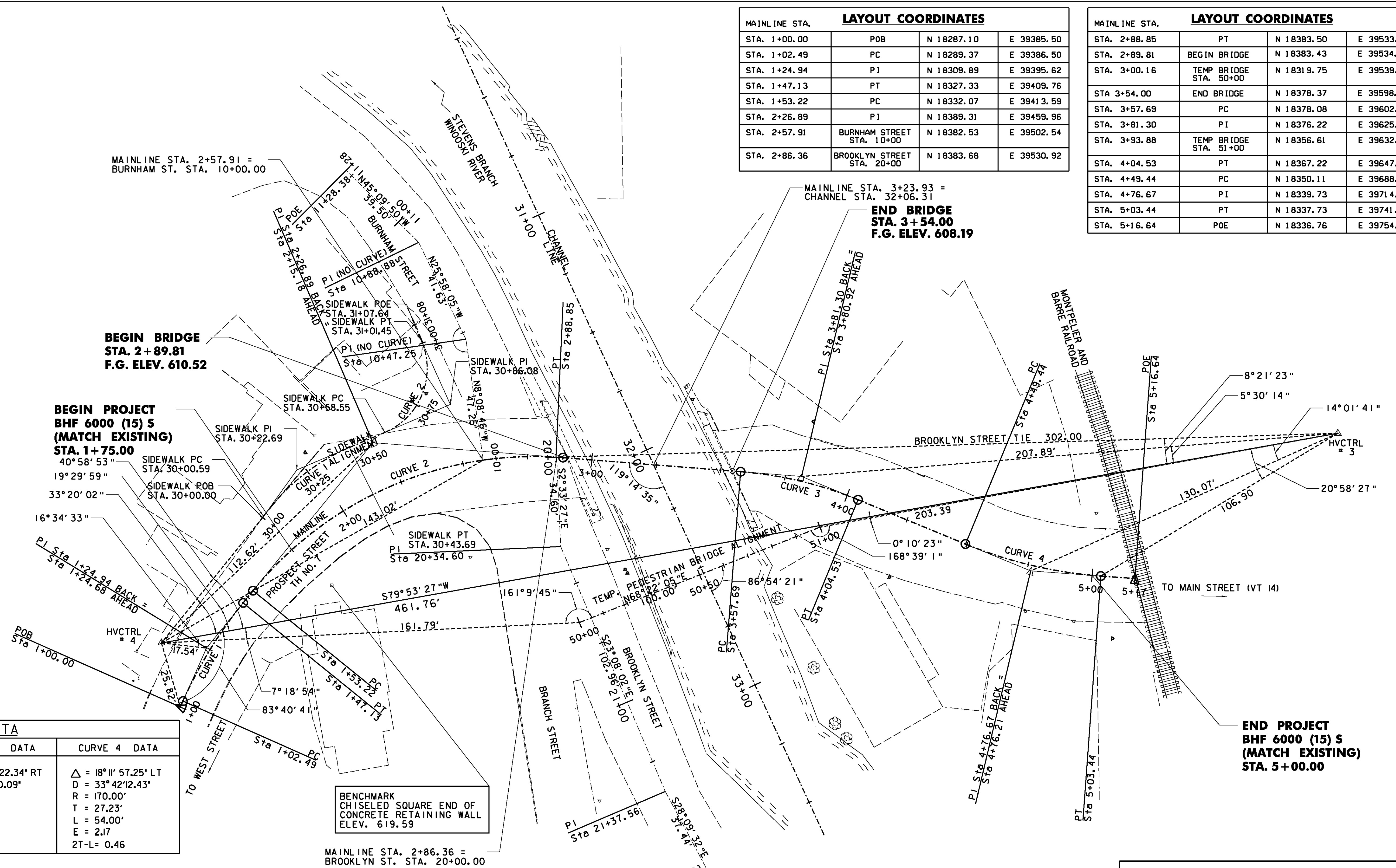
NOTE: ALL SURVEY PERFORMED BY VTRANS AND PROVIDED TO DUBOIS & KING, INC. FOR USE ON THIS PROJECT.
 * MAIN TRAVERSE COMPLETED 08/12/96 BY VTRANS (R. GILMAN P.C. & R. MOREAU) IN METRIC AND CONVERTED TO FEET ON 8/13/01 BY R. GILMAN

LAYOUT COORDINATES

MAINLINE STA.	POB	N	E
STA. 1+00.00	POB	N 18287.10	E 39385.50
STA. 1+02.49	PC	N 18289.37	E 39386.50
STA. 1+24.94	PI	N 18309.89	E 39395.62
STA. 1+47.13	PT	N 18327.33	E 39409.76
STA. 1+53.22	PC	N 18332.07	E 39413.59
STA. 2+26.89	PI	N 18389.31	E 39459.96
STA. 2+57.91	BURNHAM STREET STA. 10+00	N 18382.53	E 39502.54
STA. 2+86.36	BROOKLYN STREET STA. 20+00	N 18383.68	E 39530.92

LAYOUT COORDINATES

MAINLINE STA.	POINT	N	E
STA. 2+88.85	PT	N 18383.50	E 39533.40
STA. 2+89.81	BEGIN BRIDGE	N 18383.43	E 39534.36
STA. 3+00.16	TEMP BRIDGE STA. 50+00	N 18319.75	E 39539.71
STA. 3+54.00	END BRIDGE	N 18378.37	E 39598.35
STA. 3+57.69	PC	N 18378.08	E 39602.03
STA. 3+81.30	PI	N 18376.22	E 39625.57
STA. 3+93.88	TEMP BRIDGE STA. 51+00	N 18356.61	E 39632.67
STA. 4+04.53	PT	N 18367.22	E 39647.39
STA. 4+49.44	PC	N 18350.11	E 39688.91
STA. 4+76.67	PI	N 18339.73	E 39714.09
STA. 5+03.44	PT	N 18337.73	E 39741.24
STA. 5+16.64	POE	N 18336.76	E 39754.41



DuBois & King

engineering planning management development

STATE OF VERMONT
AGENCY OF TRANSPORTATION

Town Of BARRE CITY Bridge No. 7

Highway No. PROSPECT ST. Log Sta.

PROSPECT ST. OVER STEVENS BRANCH

TIE SHEET

Designed By A. P. GUYETTE Drawn By S. J. BIJOLLE

Checked By E. P. DETRICK Date 1/09 Bridge Design Supervisor J. W. TUCKER Date 1/09

PROJECT BARRE CITY PROJECT NO. BHF 6000 (15) S

I.G.C. Info.

Bridge Sheet No. Sheet 8 of 56

PLOTTED 2/2/2009