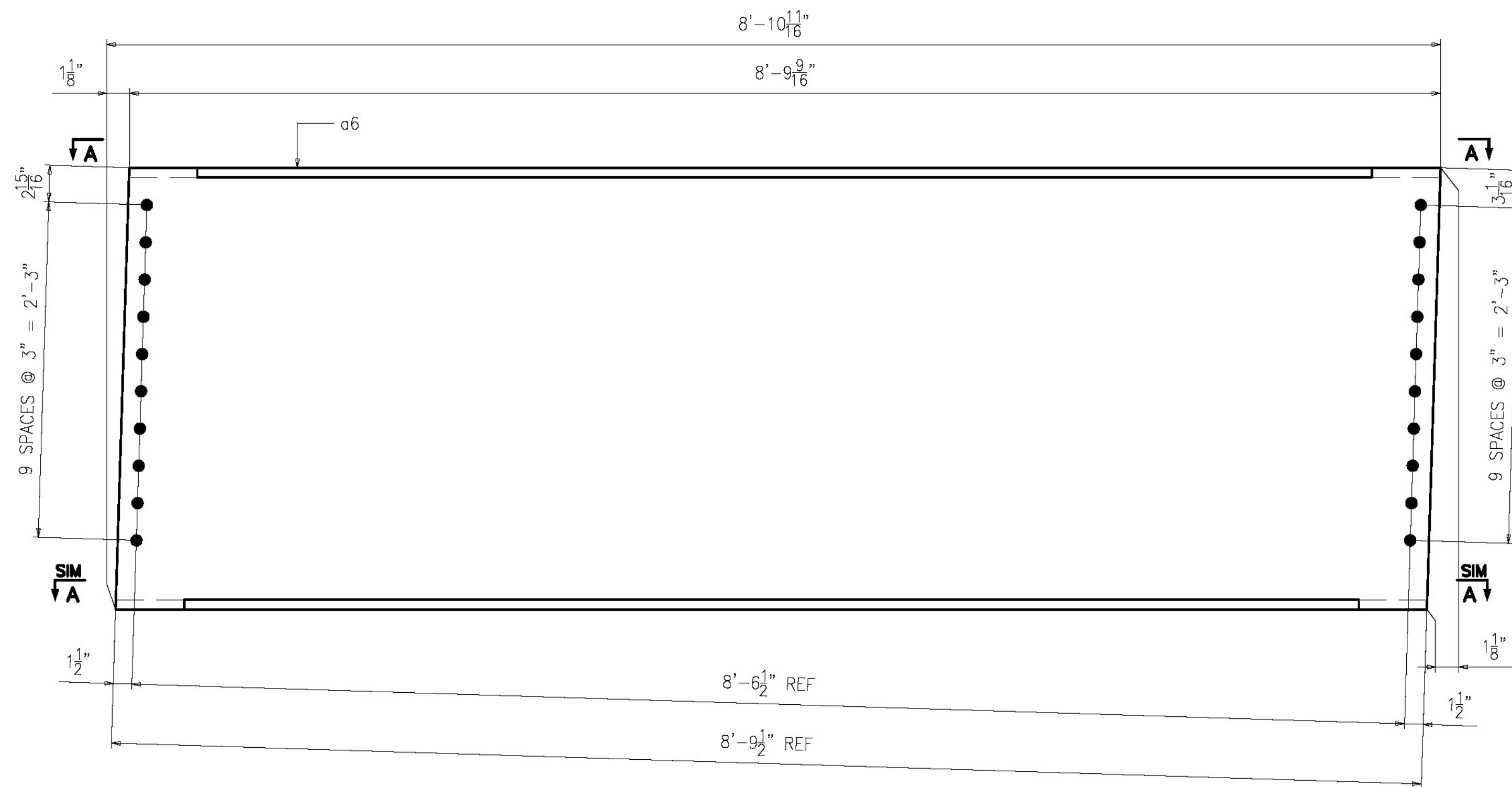
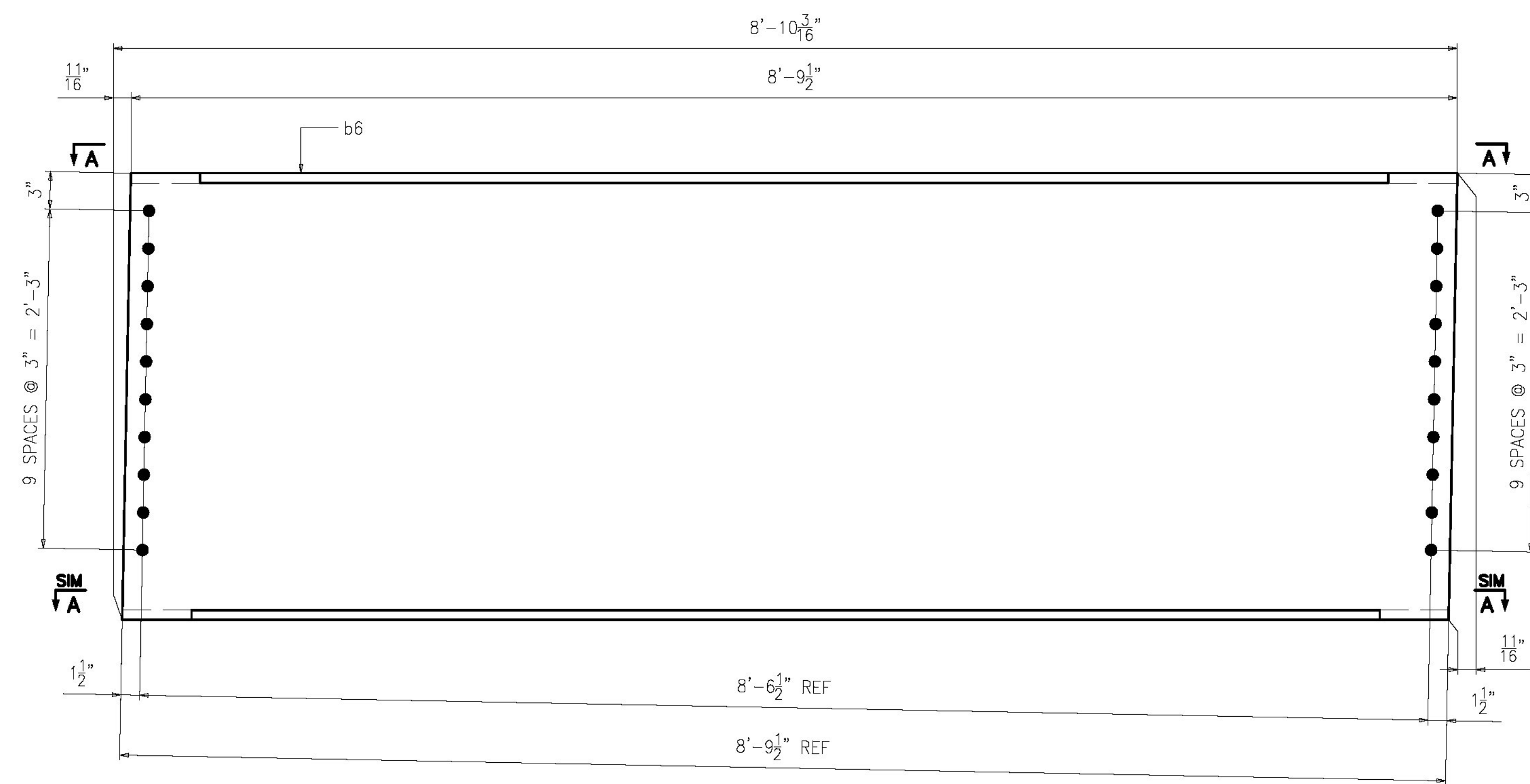


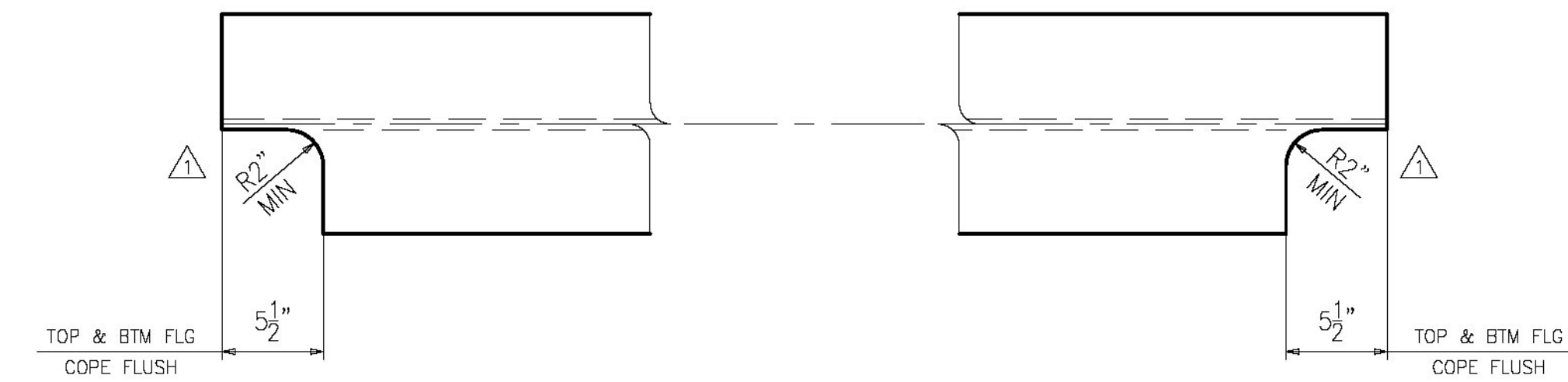
ABM INFO		SHIP		BILL OF MATERIAL			JOB NO.	DRAWING NO.	REV.
PAGE	LINE	MARK	QTY	MARK	MATERIAL	LENGTH FT INCHES	REMARKS	WT	PROCUREMENT NOTES
		6D1	2		DIAPHRAGM		PAINTED	2400	
1	R		2	d6	W 36 x 135	8 10 11/16	A709-50T2	2400	
		6D2	1		DIAPHRAGM		PAINTED	1195	
1	R		1	b6	W 36 x 135	8 10 3/16	A709-50T2	1195	



2 ~ DIAPHRAGM ~ 6D1 (PAINTED)  
BEARING #2



ONE ~ DIAPHRAGM ~ 6D2 (PAINTED)  
BEARING #2



SECTION A-A

NOTES:

- FOR GENERAL NOTES SEE SHEET GN1.
- T2 - DENOTES MATERIAL TO BE CHARPY V-NOTCH TESTED (ZONE 2)

REV.	DATE	REMARKS	DWN	CHK	APVL	SHOP
1	06/05/15	PER APPROVAL COMMENTS	EG	YT		
0						

MATERIAL:	A709-50 U.N.	SURFACE PREP. & PAINT:	SEE DWG GN1	HOLES:	15/16"Ø	SHOP BOLTS:	NONE
DESCRIPTION:	DIAPHRAGMS						
1 WALLACE AVE. SOUTH PORTLAND, ME 04106 FAX. (207) 780-6726							
STRUCTURE:	REPLACEMENT OF BRIDGE NO. 12 ON TH27 INCLUDING APPROACH ROADWAY AND CHANNEL WORK TOWN OF COLCHESTER, COUNTY OF CHITTENDEN STATE OF VERMONT AGENCY OF TRANSPORTATION	DRAWN:	BK	DATE:	02/24	CHKD:	YT
LOCATION:	COLCHESTER / CHITTENDEN, VT	JOB NO.	629-1	DWG NO.	6	REV.	△

Vermont Agency of Transportation  
**RECEIVED**  
CK'D BY FDB OK'D BY HIS  
June 10, 2015  
RESUBMIT No Approved  
BY Carolyn Carlson DATE 06/11/15

ENGINEERING REVIEW STAMP