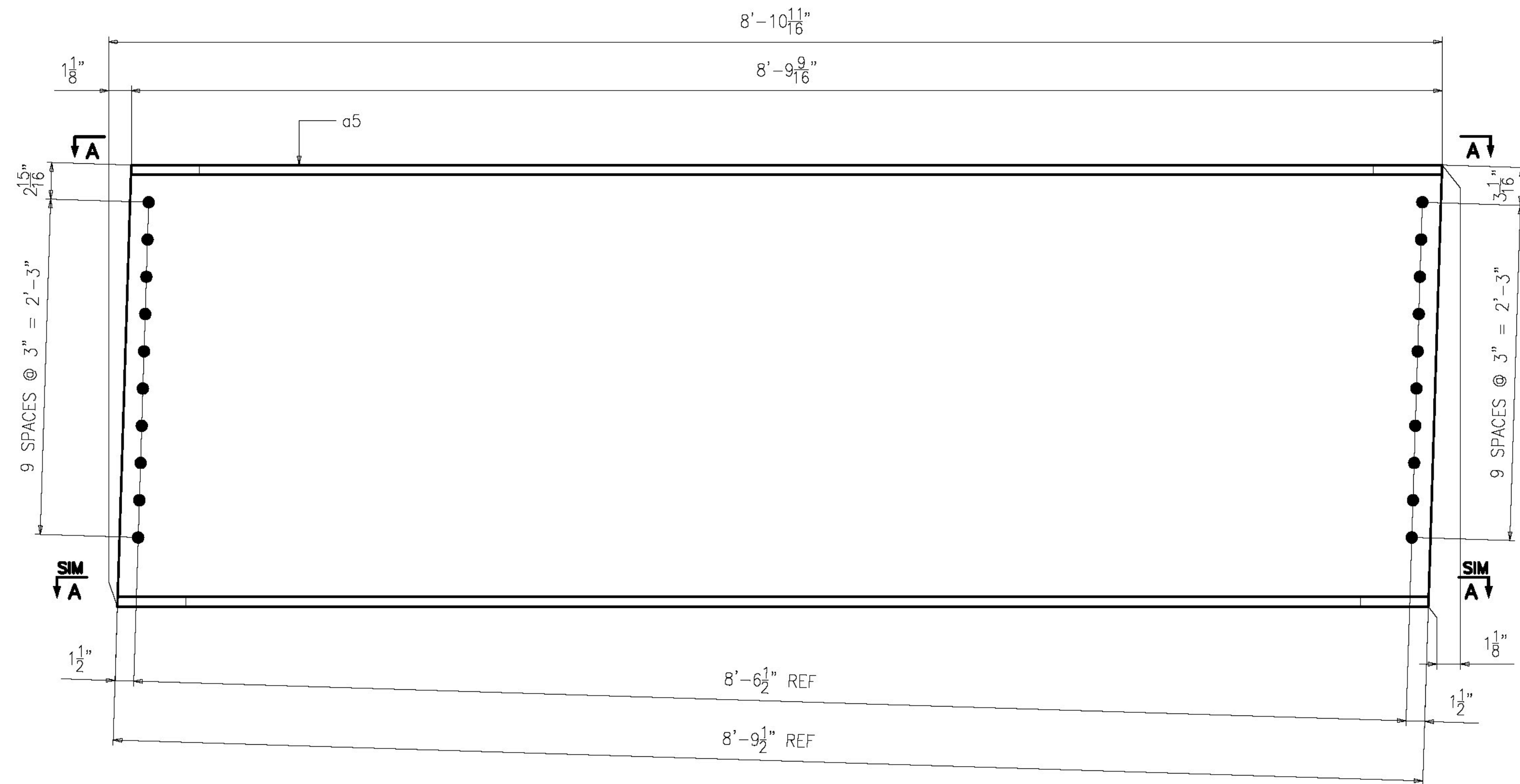
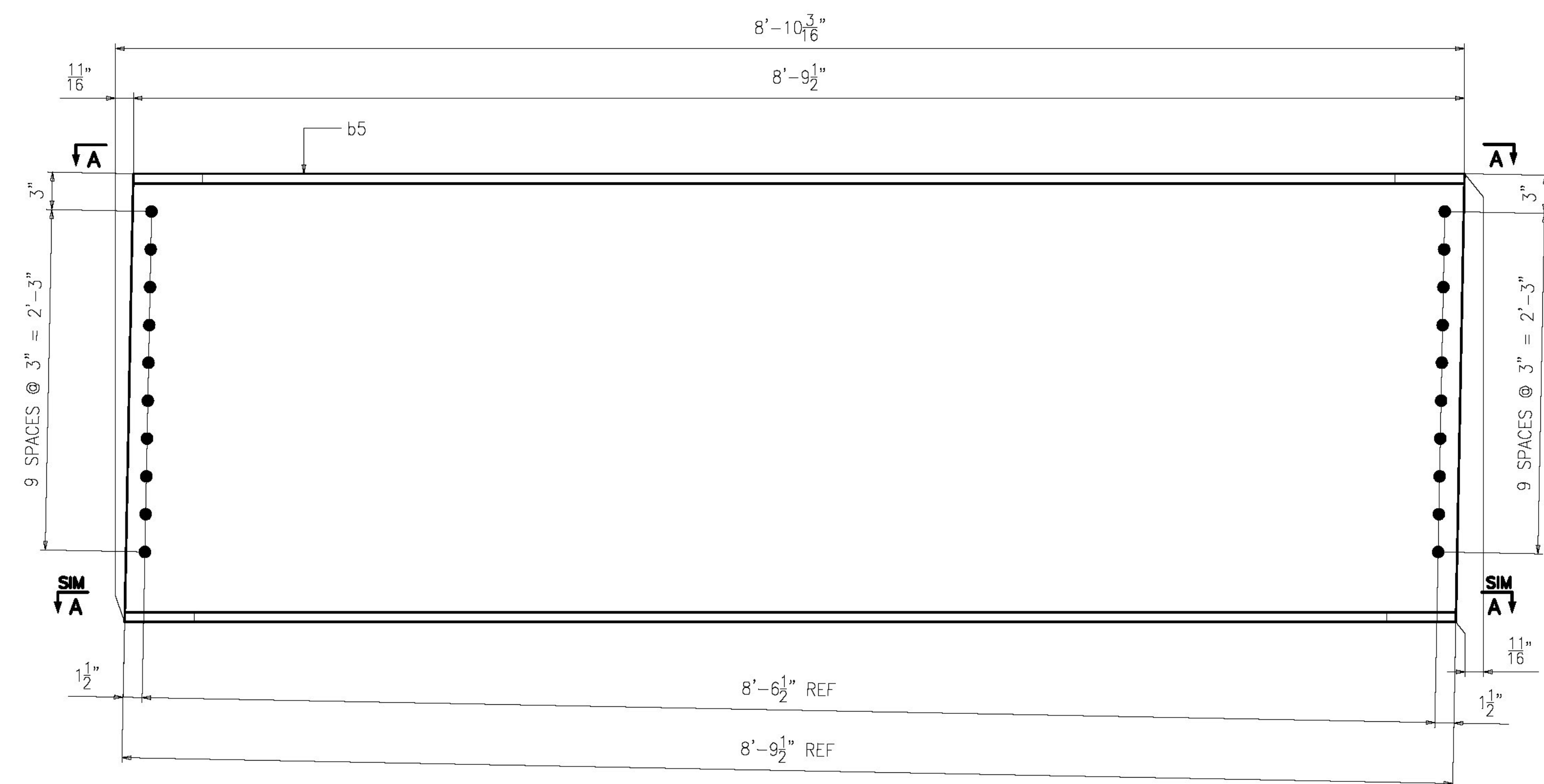


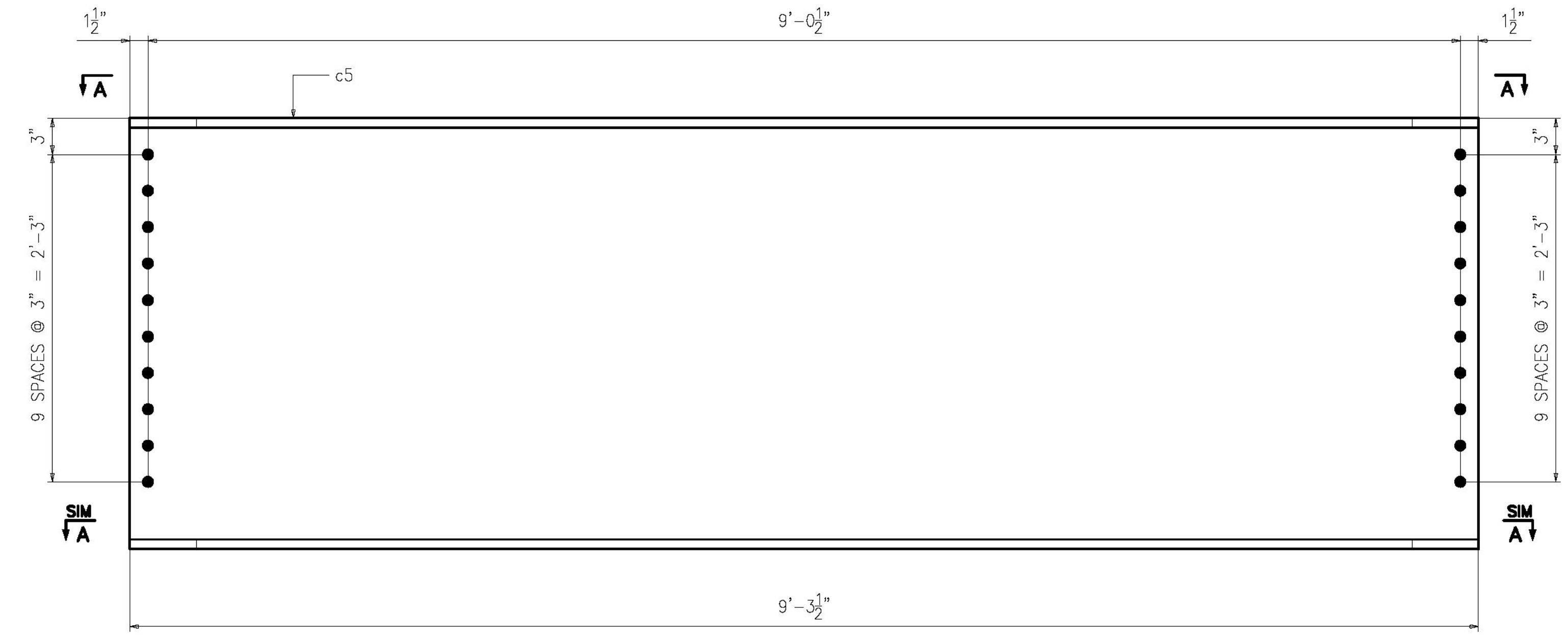
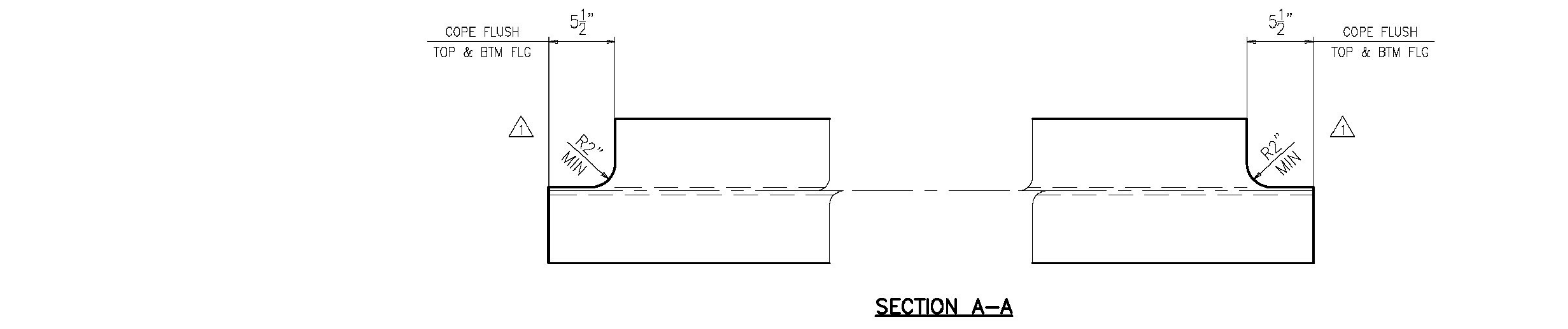
ABM INFO		SHIP		BILL OF MATERIAL				JOB NO.	DRAWING NO.	REV.
PAGE	LINE	MARK	QTY	MARK	MATERIAL	LENGTH	REMARKS	WT	PROCUREMENT	NOTES
						FT				
		SD1	2	a5	DIAPHRAGM		PAINTED	2400		
1	R		2	a5	W 36 x 135	8 10 11/16	A709-50T2	2400		
		SD2	1	b5	DIAPHRAGM		PAINTED	1195		
1	R		1	b5	W 36 x 135	8 10 3/16	A709-50T2	1195		
		SD3	12	c5	DIAPHRAGM		PAINTED	15053		
1	S		12	c5	W 36 x 135	9 3 1/2	A709-50T2	15053		



2 ~ DIAPHRAGM ~ 5D1 (PAINTED)  
BEARING #1



ONE ~ DIAPHRAGM ~ 5D2 (PAINTED)  
BEARING #1



12 ~ DIAPHRAGM ~ 5D3 (PAINTED)  
INTERMEDIATE

- NOTES:
- FOR GENERAL NOTES SEE SHEET GN1.
  - T2 - DENOTES MATERIAL TO BE CHARPY V-NOTCH TESTED (ZONE 2)

1	06/05/15	PER APPROVAL COMMENTS	EG	YT		
0						
REV.	DATE	REMARKS	DWN	CHK	APVL	SHOP
MATERIAL:		SURFACE PREP. & PAINT:		HOLES:		SHOP BOLTS:
A709-50 U.N.		SEE DWG GN1		15/16"Ø		NONE
DESCRIPTION: DIAPHRAGMS						

Vermont Agency of Transportation  
**RECEIVED**  
 CK'D BY FDB OK'D BY HIS  
 June 10, 2015  
 RESUBMIT No Approved  
 BY Carolyn Carlson DATE 06/11/15

ENGINEERING REVIEW STAMP

		<b>CASCO BAY STEEL STRUCTURES, INC.</b> 1 WALLACE AVE. PHONE (207) 780-6722 SOUTH PORTLAND, ME 04106 FAX. (207) 780-6726			
STRUCTURE:	REPLACEMENT OF BRIDGE NO. 12 ON TH27 INCLUDING APPROACH ROADWAY AND CHANNEL WORK TOWN OF COLCHESTER, COUNTY OF CHITTENDEN STATE OF VERMONT AGENCY OF TRANSPORTATION	DRAWN:	BK	DATE:	02/24
LOCATION:	COLCHESTER / CHITTENDEN, VT	CHKD:	YT	DATE:	04/28
PROJ NO.	STP 5600(12)	JOB NO.	629-1	DWG NO.	5
CUSTOMER:	A.L. ST. ONCE	REV.			