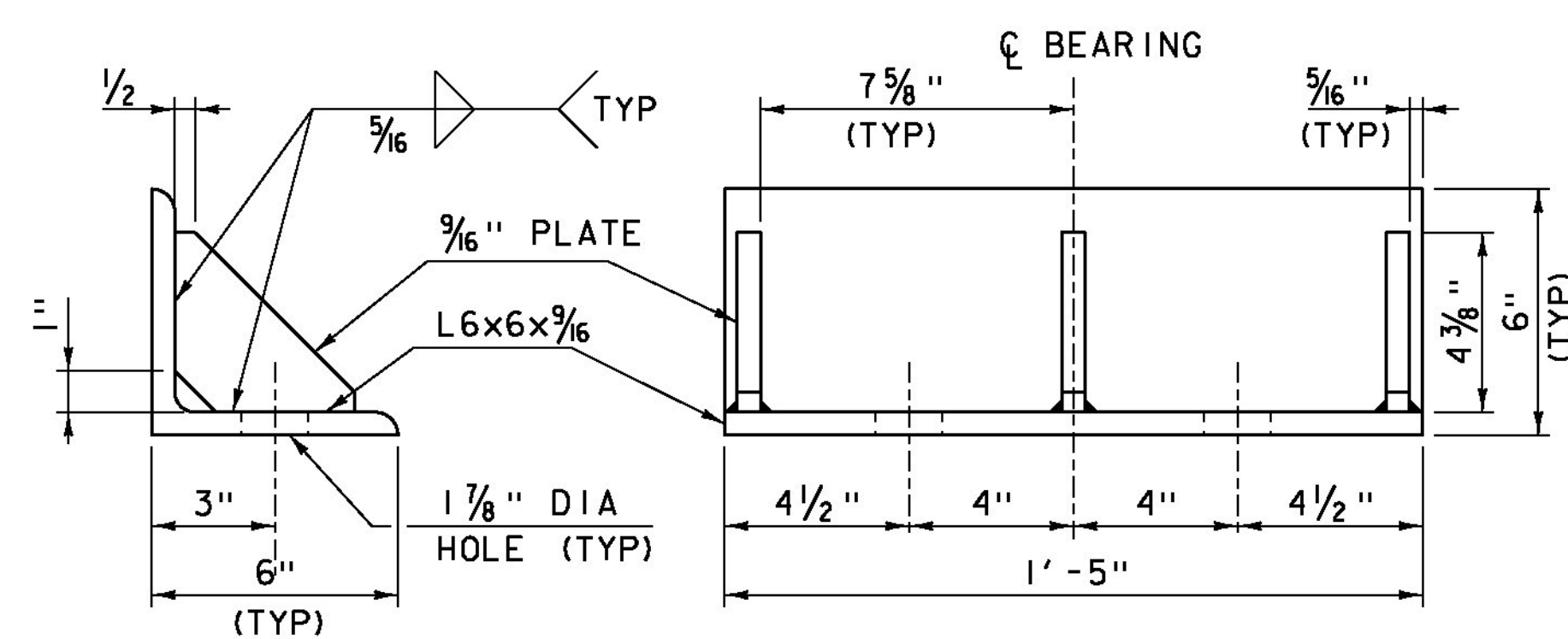
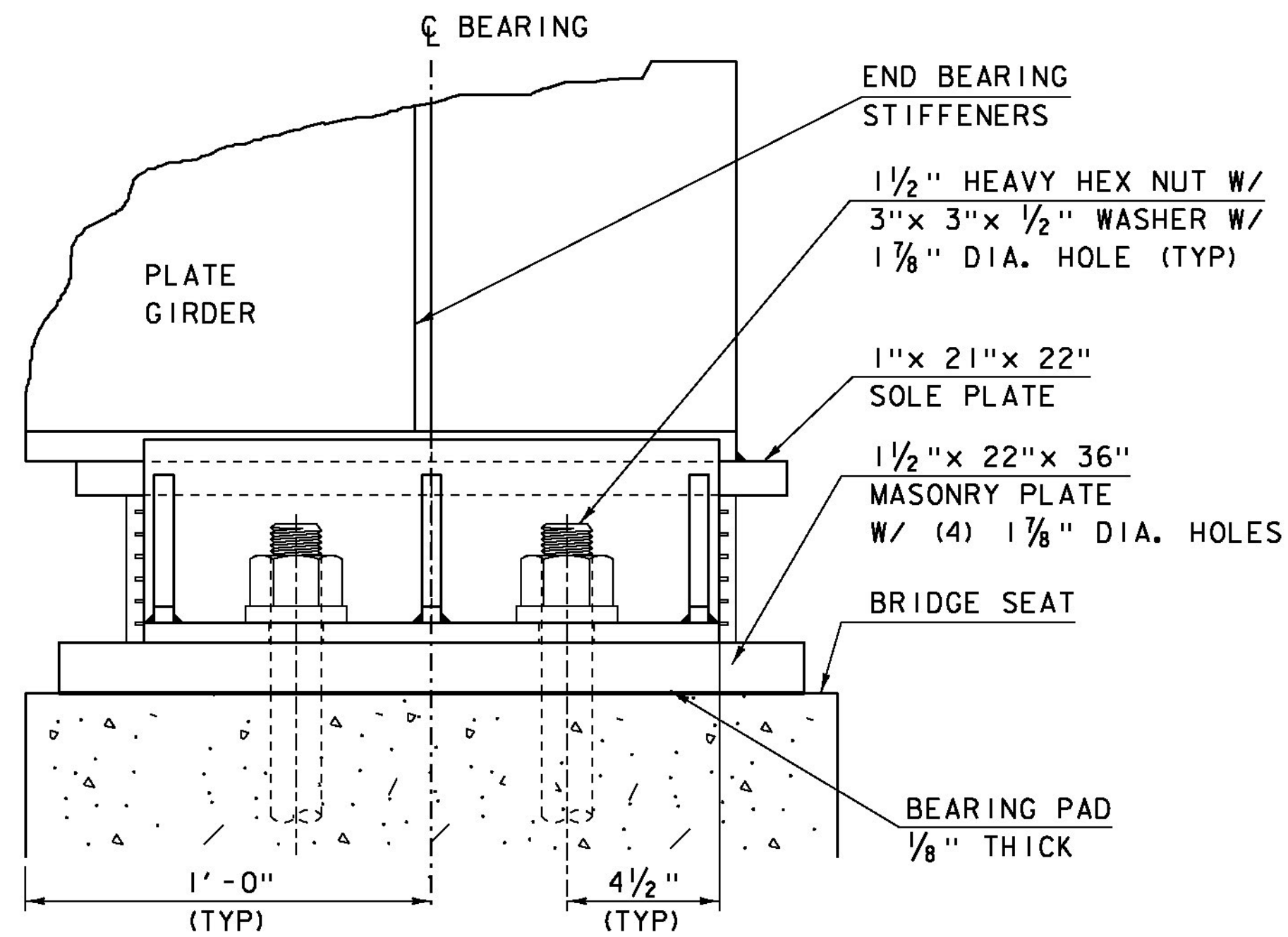


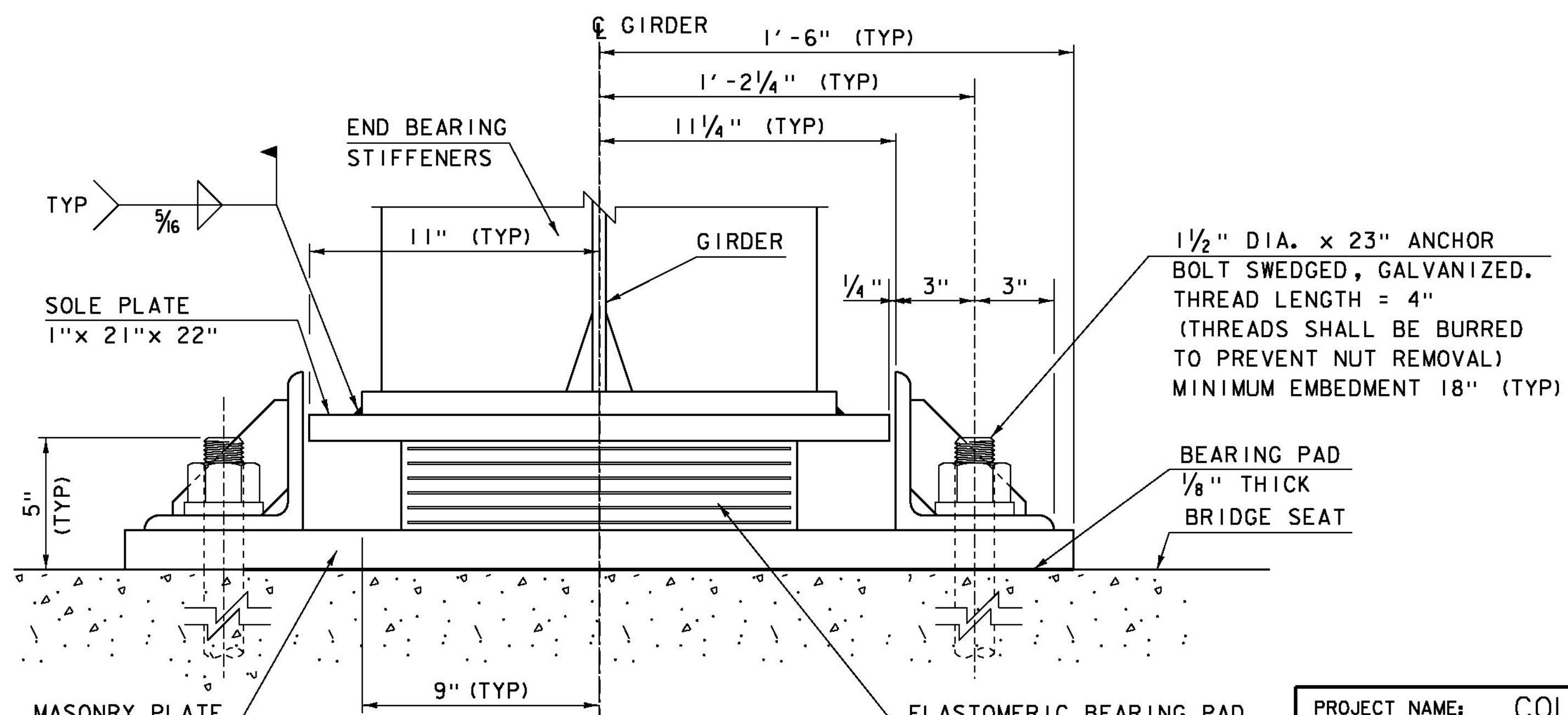
PLAN VIEW
SCALE 3" = 1'-0"



SIDE RETAINER DETAIL
SCALE 3" = 1'-0"



SECTION B-B
SCALE 3" = 1'-0"



SECTION A-A
SCALE 3" = 1'-0"

BEARING NOTES

- BEARINGS SHALL BE PAID FOR UNDER THE ITEM 531.17 "BEARINGS DEVICE ASSEMBLY, STEEL REINFORCED ELASTOMERIC PAD" AND SHALL CONFORM TO APPLICABLE SUBSECTIONS OF SECTIONS 531 AND 731.
- THE FIELD WELD CONNECTING THE BOTTOM FLANGE WITH THE BEARING DEVICE SHALL BE MADE WITH E7018 RODS. AREAS OF METALIZING DAMAGED BY WELDING AND/OR HANDLING SHALL BE REPAIRED IN ACCORDANCE WITH SUBSECTION 726.09.
- ALL STEEL COMPONENTS SHALL BE METALIZED AS PER SUBSECTIONS 531.04 (b) AND 506.14.
- DESIGN CRITERIA, LOADS GIVEN AS PER BEARING:

DESIGN LOAD EFFECTS (KIP)	SERVICE LIMIT STATE	VERTICAL		
		DEAD	SUPER DEAD	LIVE LOAD
ROTATION (RAD)	SERVICE LIMIT STATE	TRANSVERSE		14.6
		LONGITUDINAL		22.8
TRANSLATIONS (in)	SERVICE LIMIT STATE	IRREVERSIBLE	TRANSVERSE	0.000
			LONGITUDINAL	0.007
	REVERSIBLE	TRANSVERSE	0.005	
		LONGITUDINAL	0.006	
SERVICE LIMIT STATE	IRREVERSIBLE	TRANSVERSE	*	
		LONGITUDINAL	*	
REVERSIBLE	TRANSVERSE	0.070		
	LONGITUDINAL	0.687		

- ALL REINFORCEMENT BETWEEN LAYERS OF ELASTOMER SHALL BE SAND BLASTED AND FREE OF COATINGS, RUST, AND MILL SCALE. THE PLATES SHALL BE FREE OF SHARP EDGES AND BURRS.
- STEEL REINFORCED ELASTOMERIC BEARINGS SHALL HAVE A MINIMUM OF 1/8" EDGE SEAL OF ELASTOMER INTEGRAL WITH THE BEARING OVER ALL INTERNAL PLATES.
- BRIDGE SEAT ELEVATIONS MAY BE REVISED TO ACCOMMODATE AN ALTERNATE CONFIGURATION. THE CONCRETE SURFACES UNDER THE BEARING DEVICES SHALL BE LEVEL.

NOTE: EXPANSION BEARINGS LOCATED AT BEGIN BRIDGE

PROJECT NAME: COLCHESTER
PROJECT NUMBER: STP 5600 (I2)

FILE NAME: s95J298brg.dgn
PROJECT LEADER: C. CARLSON
DESIGNED BY: N. VANDENBERG
EXPANSION BEARING DETAILS

PLOT DATE: 30-JAN-2015
DRAWN BY: D. KARABEGOVIĆ
CHECKED BY: M. LONGSTREET
SHEET 27 OF 53