

CONSTRUCT BITUMINOUS CONCRETE APRON

DRIVE @ 15+67.00 RT (LENGTH 18'-0")
 DRIVE @ 16+21.00 LT (LENGTH 9'-6")
 DRIVE @ 16+27.00 RT (LENGTH 9'-3")

COLD PLANING, BITUMINOUS PAVEMENT

11+75.00 - 12+25.00
 10+63.00

BRIDGE RAILING, GALVANIZED STEEL TUBING/CONCRETE COMBINATION

13+60.95 RT - 14+33.05 RT
 13+61.05 LT - 14+32.95 LT

CAST-IN-PLACE CONCRETE CURB, TYPE B

13+48.36 LT - 13+60.00 LT
 14+34.00 LT - 14+45.64 LT
 13+46.97 RT - 13+60.00 RT
 14+34.00 RT - 14+47.03 RT

RELOCATE MAILBOX, SINGLE SUPPORT

15+54.00 RT - 15+75.00 RT

BITUMINOUS CONCRETE SIDEWALK

13+48.36 LT - 13+60.00 LT
 14+34.00 LT - 14+45.64 LT

DETECTABLE WARNING SURFACE

13+48.85 LT - 13+50.76 LT
 14+43.24 LT - 14+45.15 LT

HD STEEL BEAM GUARDRAIL, GALV.

12+47.45 RT - 13+42.80 RT
 13+16.16 LT - 13+42.90 LT
 14+51.20 RT - 15+32.30 RT
 14+51.10 LT - 15+40.82 LT

ANCHOR FOR STEEL BEAM RAIL

12+54.84 RT
 13+23.00 LT
 15+24.95 RT
 15+33.70 LT

TH 27 CURVE (1)
 DELTA = 31°05'40"
 D = 17°06'12"
 R = 335.00'
 T = 93.20'
 L = 181.81'
 E = 12.72'

CONSTRUCT STONE-LINED DITCH, TYPE I

12+64.0 LT - 13+77.6 LT
 15+53.4 LT - 16+04.0 LT

16+04.43 LT - 16+42.46 RT
 REMOVE EXISTING 18" PIPE AND CONCRETE HEADWALLS AT INLET AND OUTLET

16+04.48 LT - 16+36.62 LT
 REMOVE EXISTING 24" CGMP

MAINLINE 13+83.69 AH =
 MAINLINE 13+79.10 BK =
 CHANNEL LINE 20+61.97 =
 75°05'53" LT

① 16+03.15 LT - 16+61.38 RT
 NEW 18" X 70' CPEP (SL)

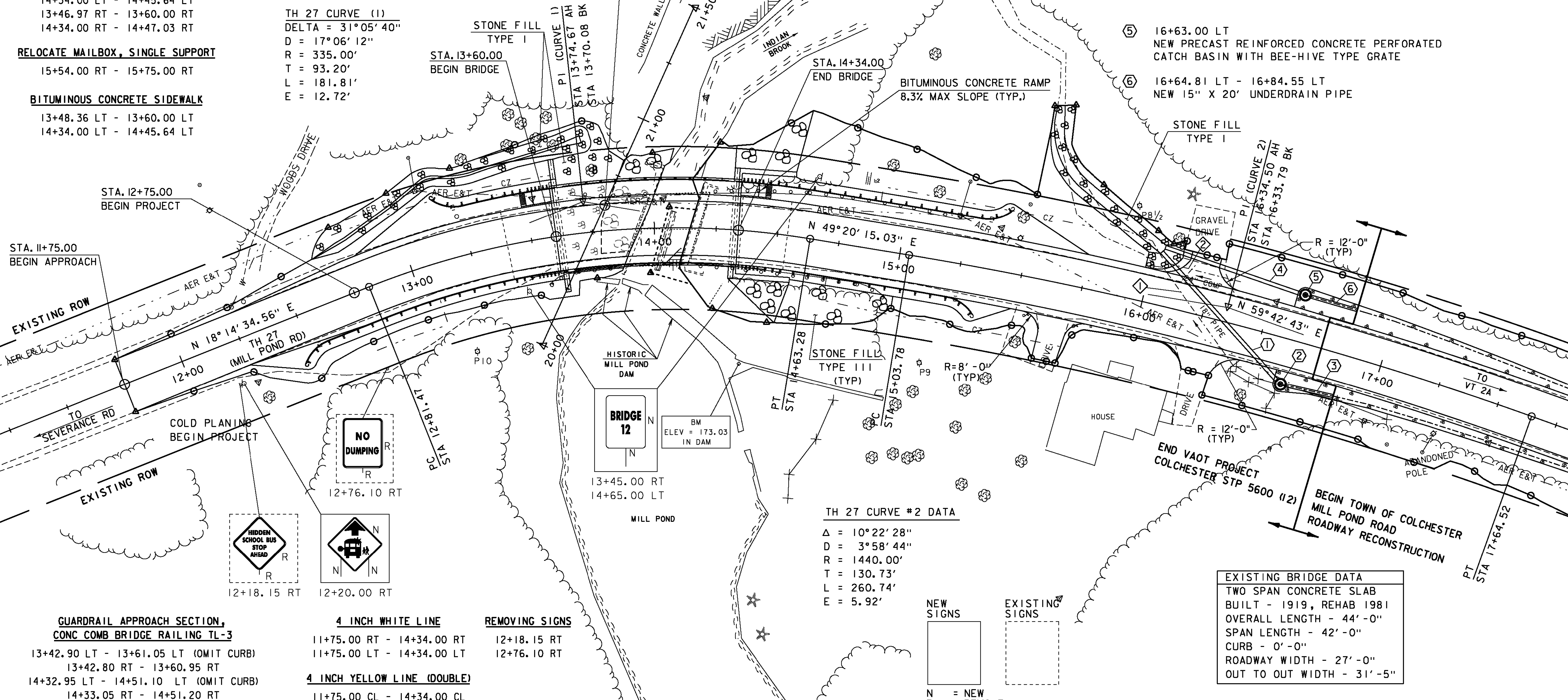
② 16+63.00 RT
 NEW PRECAST REINFORCED CONCRETE PERFORATED CATCH BASIN WITH BEE-HIVE TYPE GRATE

③ 16+64.85 RT - 16+85.07 RT
 NEW 15" X 20' UNDERDRAIN PIPE

④ 16+04.21 LT - 16+61.19 LT
 NEW 18" X 58' CPEP (SL)

MILEMARKER, STATION, OR SIGN NUMBER	SIGN LEGEND	SIGN DIMENSIONS WIDTH (ft) HEIGHT (ft)	NEW SIGN "A"	EXIST. POST NO.	NEW SIGN POSTS SQUARE STEEL (ft)				REMARKS	SIGN DETAIL	
					1.75	2.0	2.5	3.0		DETAIL ON SHEET NUMBER	STD. SHEET NUMBER
12+20.00 RT		30 30	6.25		2	15		X			E-153
13+45.00 RT		6 8	0.33		1	8		X			T-42
14+65.00 LT		6 8	0.33		1	8		X			T-42
					FT 16 30 16 30 16 30 FT 16 30 16 30 16 30 16 30						
TOTALS					SF 6.91	FT 46				SIS = STANDARD HIGHWAY SIGNS (AUTOCAD)	

FINAL POST LENGTHS ARE TO BE DETERMINED IN THE FIELD. POST SIZES ARE COMPUTED BASED ON INFORMATION FURNISHED ON THE STANDARD SHEETS AND THE VTRANS "SIGN POST DESIGN GUIDELINE."



GUARDRAIL APPROACH SECTION, CONC COMB BRIDGE RAILING TL-3
 13+42.90 LT - 13+61.05 LT (OMIT CURB)
 13+42.80 RT - 13+60.95 RT
 14+32.95 LT - 14+51.10 LT (OMIT CURB)
 14+33.05 RT - 14+51.20 RT

4 INCH WHITE LINE
 11+75.00 RT - 14+34.00 RT
 11+75.00 LT - 14+34.00 RT

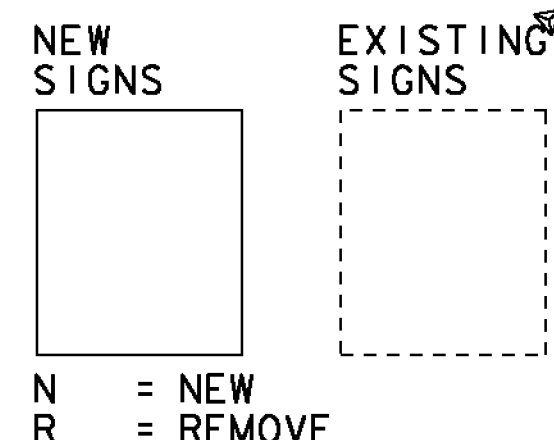
4 INCH YELLOW LINE (DOUBLE)
 11+75.00 CL - 14+34.00 CL

REMOVING SIGNS
 12+18.15 RT
 12+76.10 RT

REMOVAL AND DISPOSAL OF GUARDRAIL
 13+54.00 RT - 13+86.00 RT
 13+68.00 LT - 13+97.00 LT
 14+15.00 RT - 14+97.00 RT
 14+23.00 LT - 15+27.00 LT

TRAFFIC SIGNS, TYPE A
 12+20.00 RT
 13+45.00 RT
 14+65.00 LT

TH 27 CURVE #2 DATA
 Δ = 10°22'28"
 D = 3°58'44"
 R = 1440.00'
 T = 130.73'
 L = 260.74'
 E = 5.92'



EXISTING BRIDGE DATA
 TWO SPAN CONCRETE SLAB
 BUILT - 1919, REHAB 1981
 OVERALL LENGTH - 44'-0"
 SPAN LENGTH - 42'-0"
 CURB - 0'-0"
 ROADWAY WIDTH - 27'-0"
 OUT TO OUT WIDTH - 31'-5"

KEY	DATE	BY	REVISION
	04/20/2015	VAOT	MODIFIED DRAINAGE PIPES AND DITCH.
	09/01/2015 09/08/2015	VAOT VAOT	MODIFIED SIDEWALK WIDTH. EXTENDED COLD PLANING & PAVING.

PROJECT NAME: COLCHESTER
 PROJECT NUMBER: STP 5600 (12)
 FILE NAME: s95j298bdr.dgn
 PROJECT LEADER: C. CARLSON
 DESIGNED BY: N. VANDENBERG
 LAYOUT

PLOT DATE: 01-SEP-2015
 DRAWN BY: G. ROKES
 CHECKED BY: N. VANDENBERG
 SHEET 12 OF 53