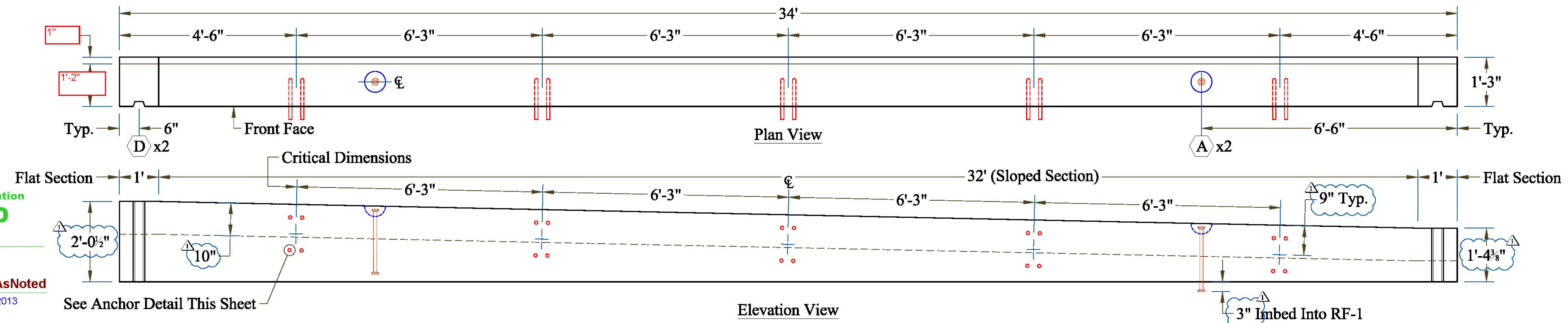


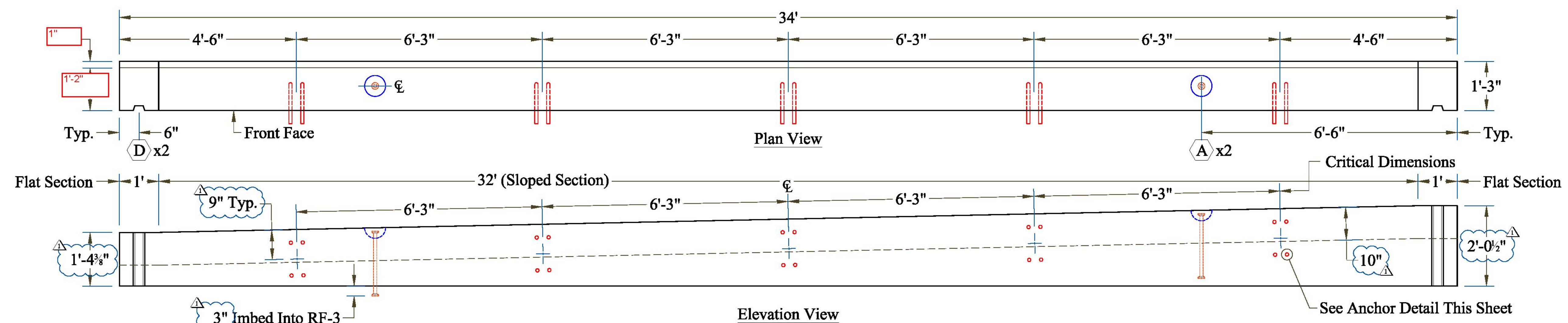
Note: See Sheet 3 for Section and Reinforcing

Vermont Agency of Transportation
RECEIVED
 CK'D BY RMK OK'D BY
 June 25, 2013
 RESUBMIT BY JTS Approved AsNoted DATE 6-26-2013

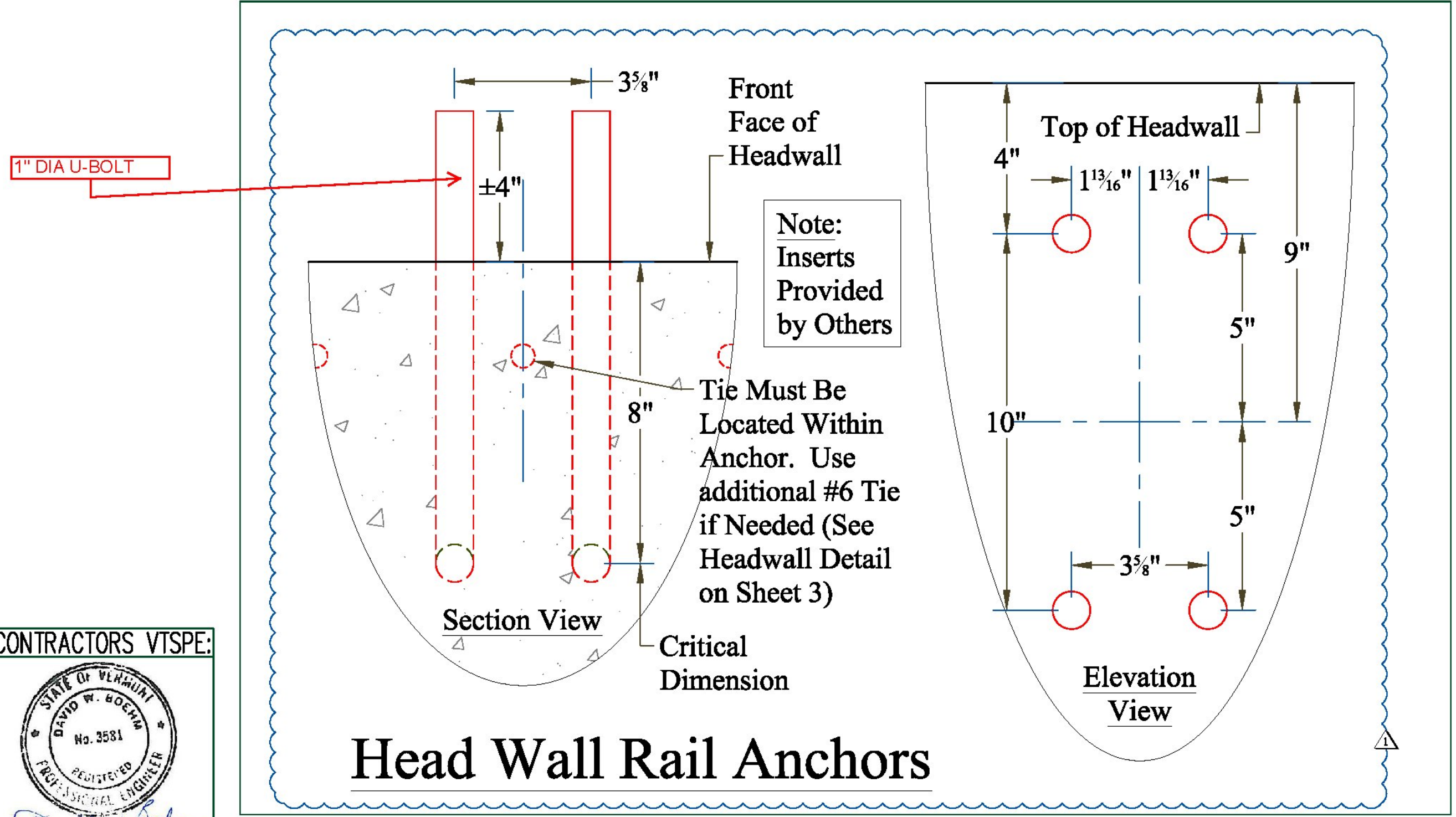


HW-1 Details

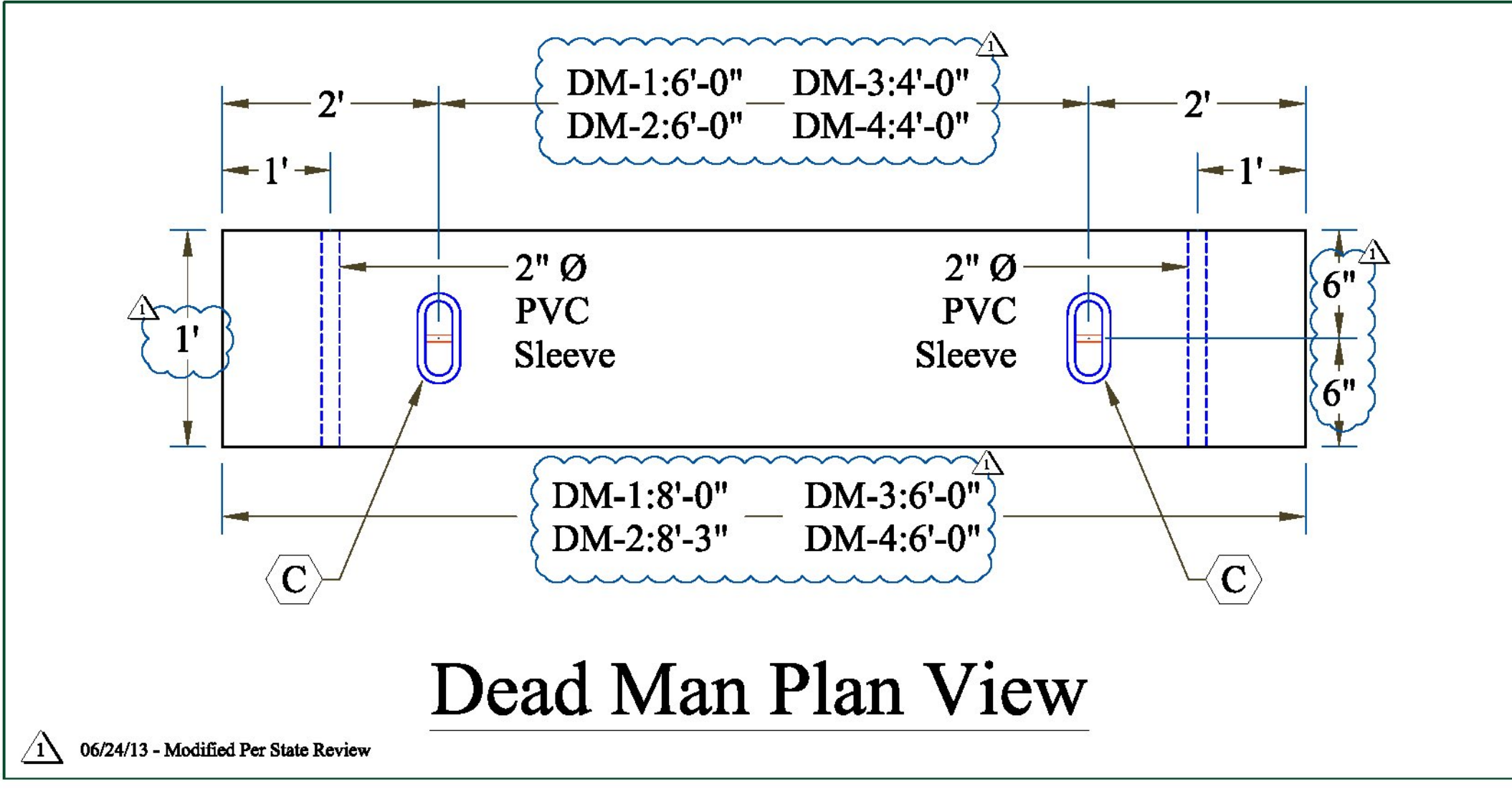
Note: See Sheet 3 for Section and Reinforcing



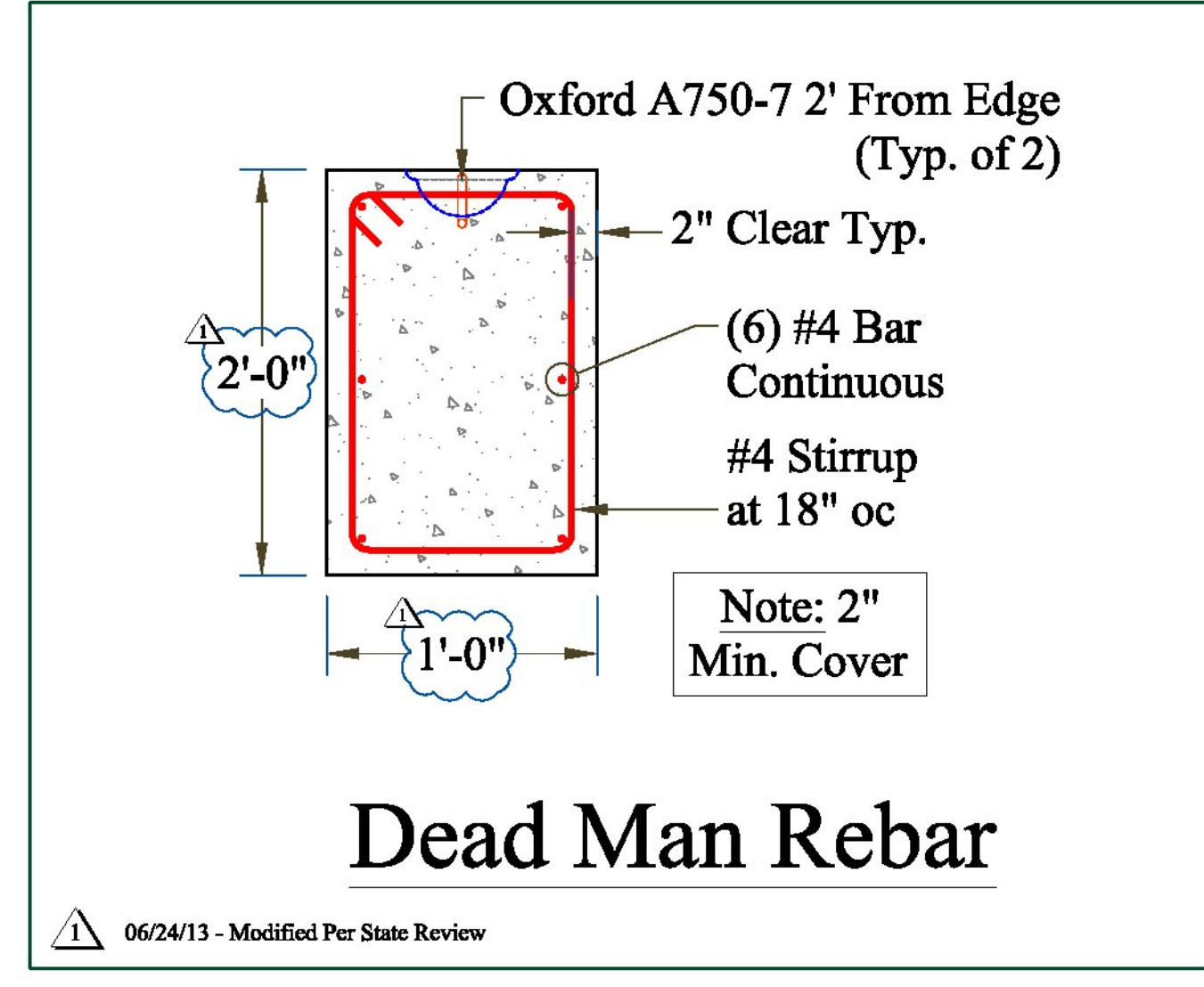
HW-2 Details



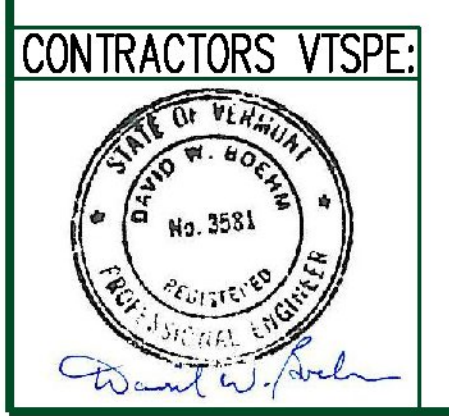
Head Wall Rail Anchors



Dead Man Plan View



Dead Man Rebar



PRECAST CONCRETE RIGID FRAME SHOP DRAWINGS (SDI JOB# 13429)
 SUPERVISOR: M. WHEELER PROJECT NAME: WOODSTOCK
 DETAILER: C. DUPLANTIS PROJECT #: BRO 1444 (55)
 CHECKER: M. WHEELER LOCATION: WOODSTOCK, VT
 ENGINEER: ENGINEERING VENTURES BRIDGE: #23 ON TOWN HWY 6
 CONTRACTOR: B.U.R. CONSTRUCTION CLAREMONT, NH 03743
 FABRICATOR: 193 INDUSTRIAL AVE. WILLISTON, VT 05495
 Ph: (603) 542-2801 Ph: (802) 658-0201
 05/30/13 HEAD WALL DETAILS, REINFORCING & SECTIONS 5 of 6

