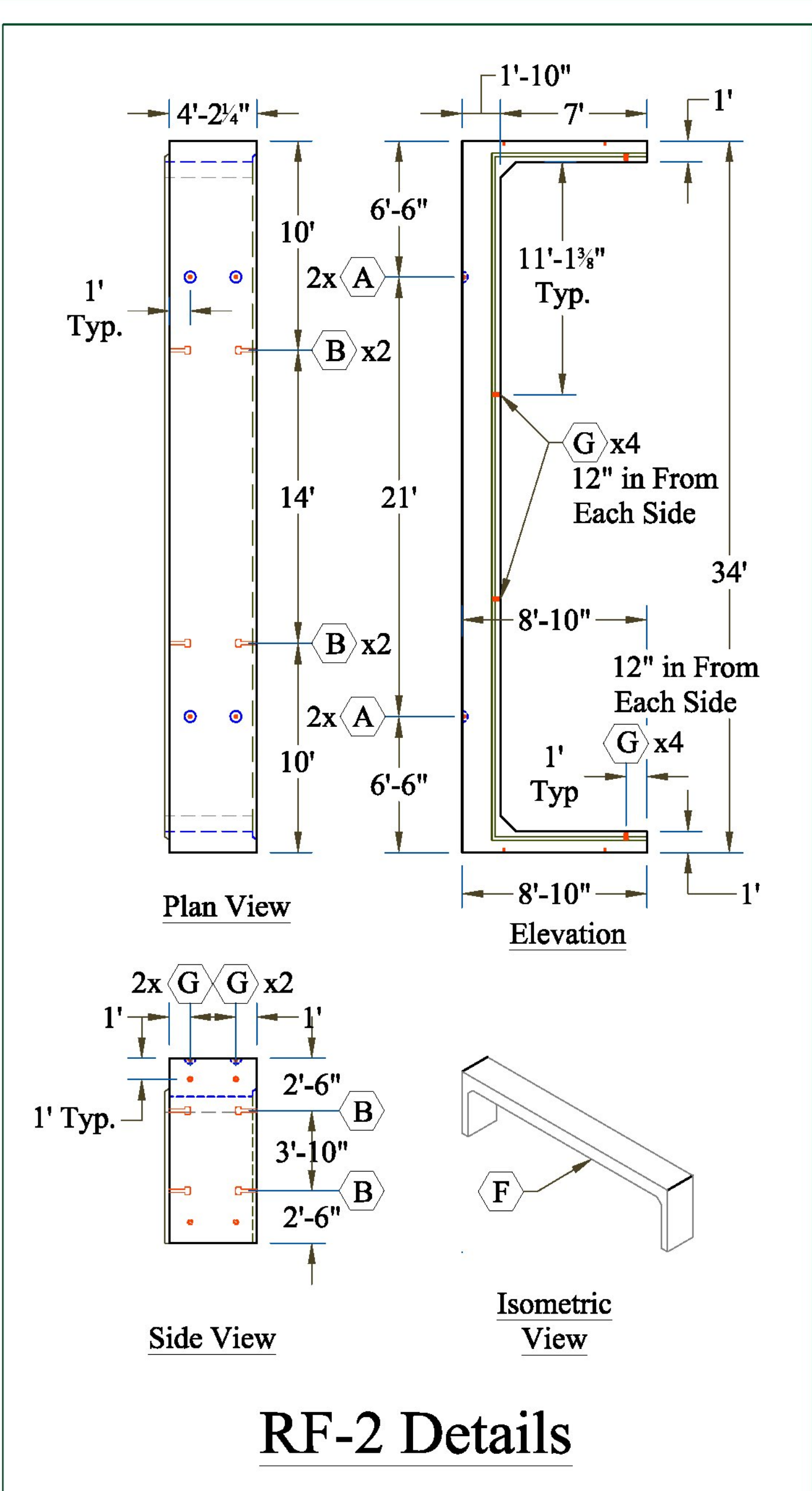
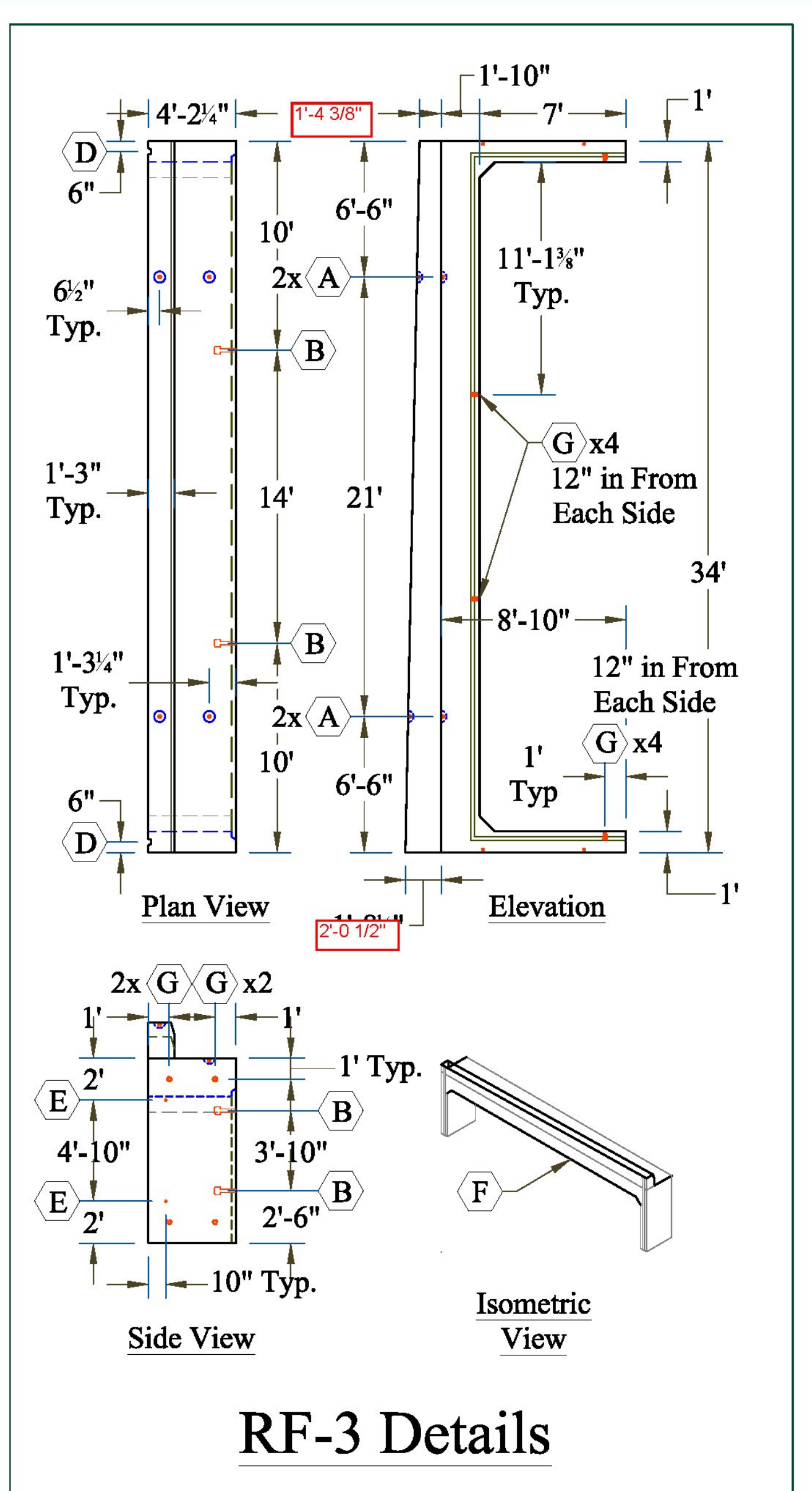


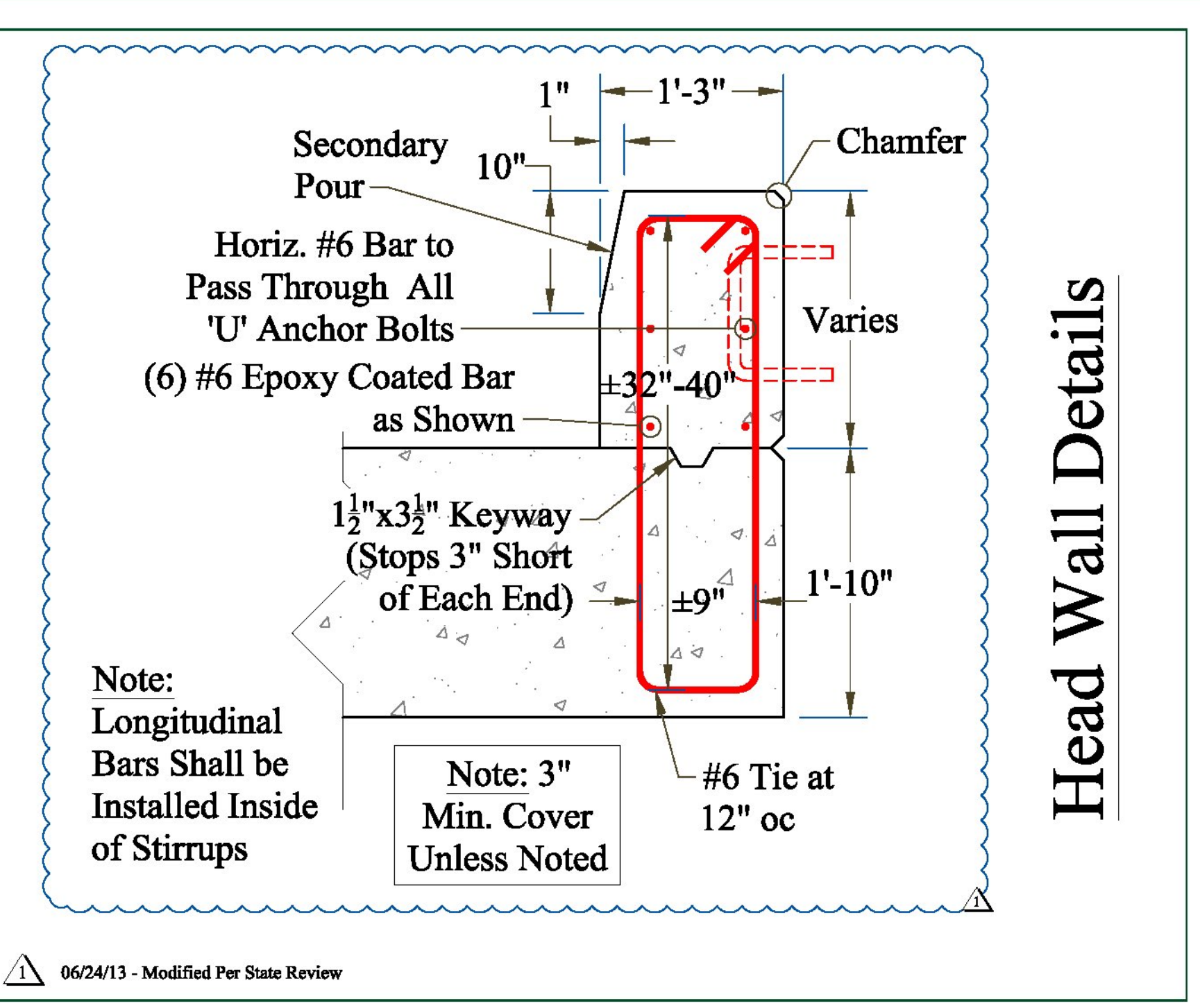
RF-1 Details



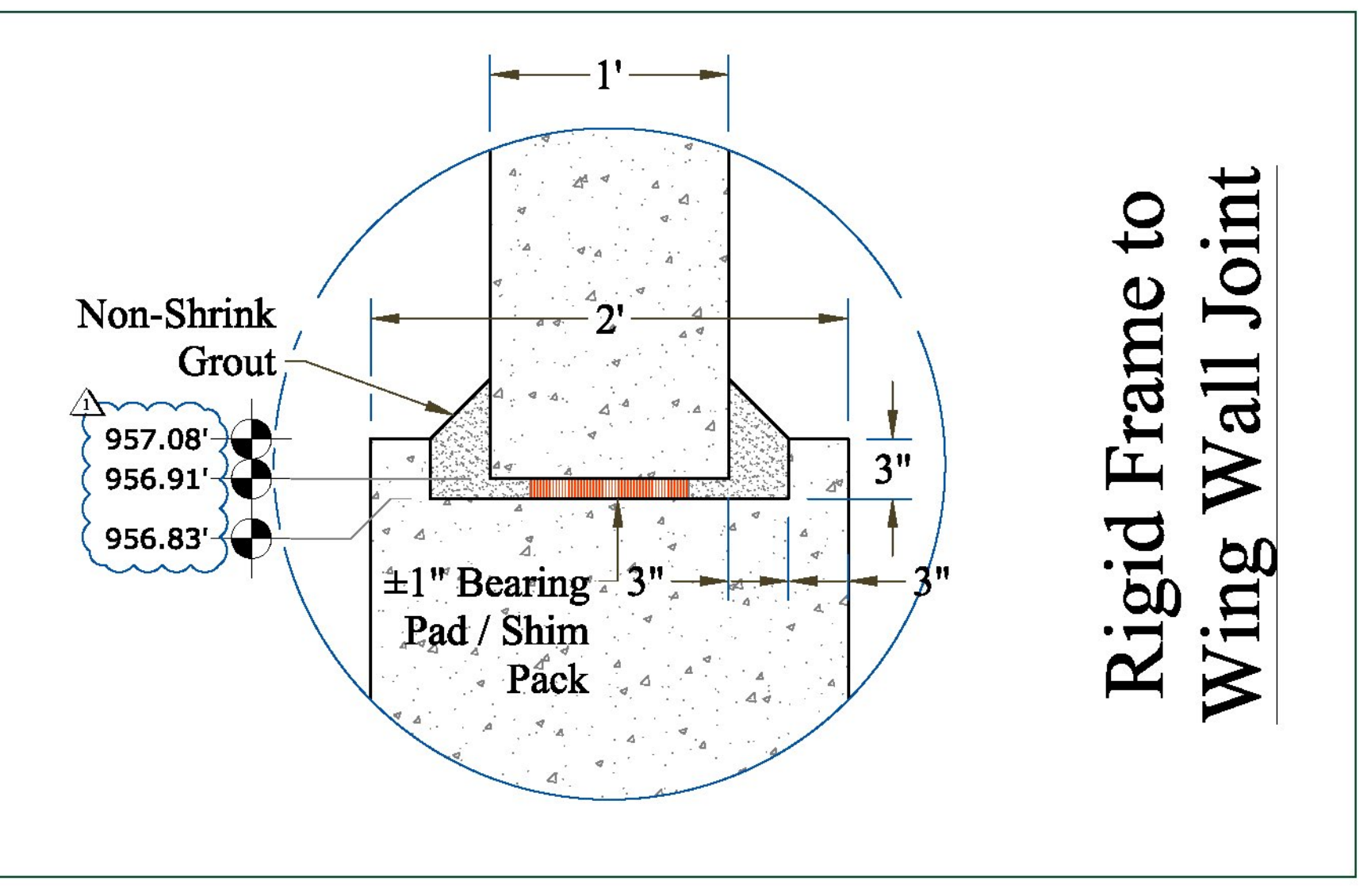
RF-2 Details



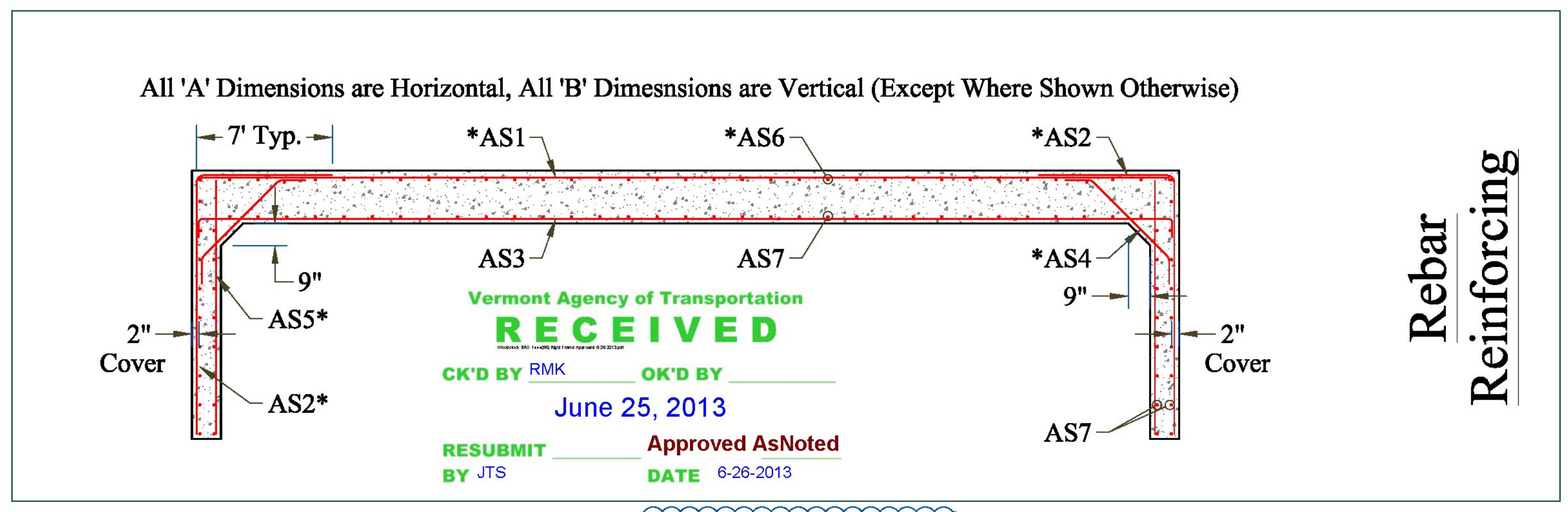
RF-3 Details



Head Wall Details

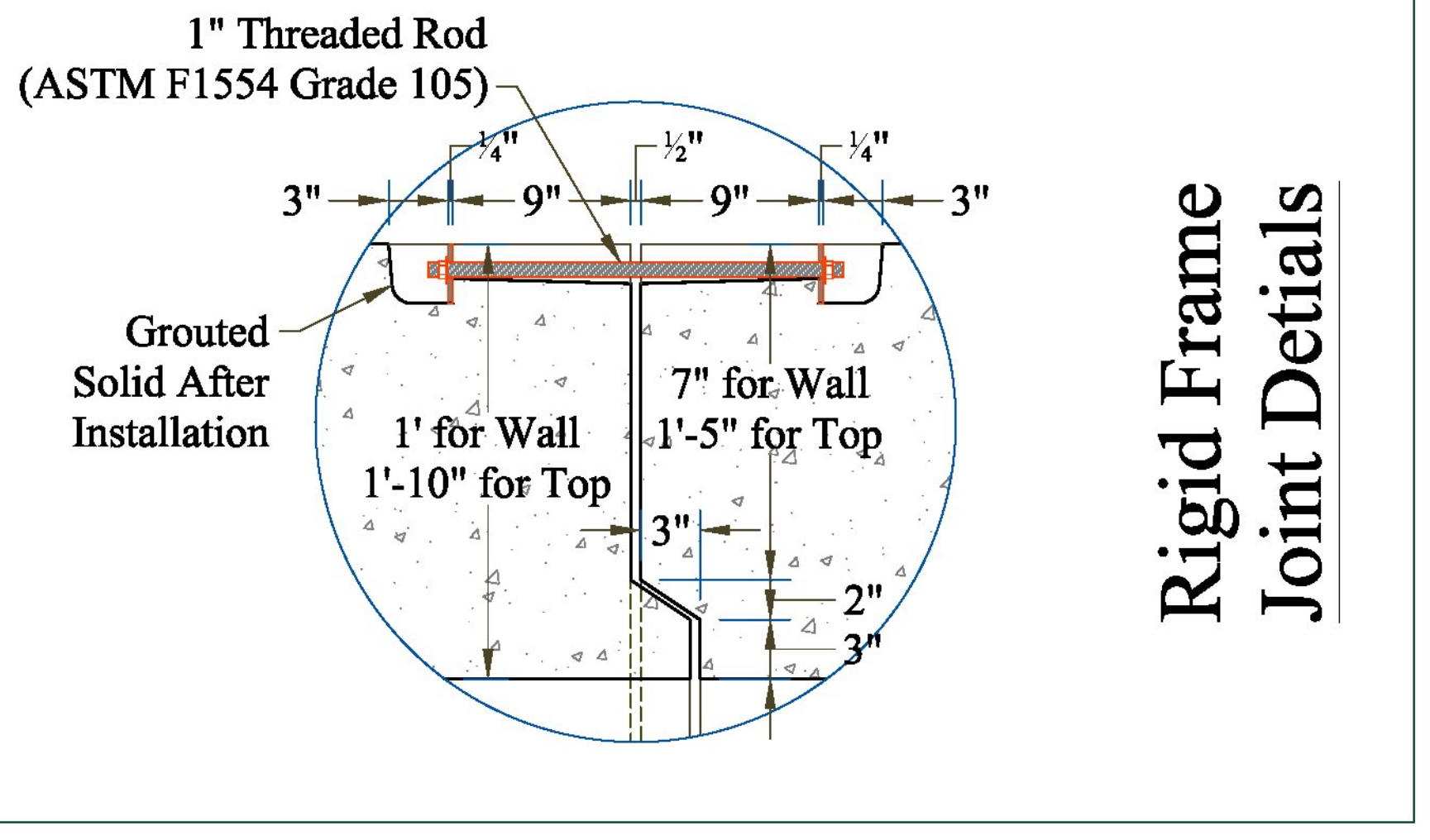


Rigid Frame to Wing Wall Joint

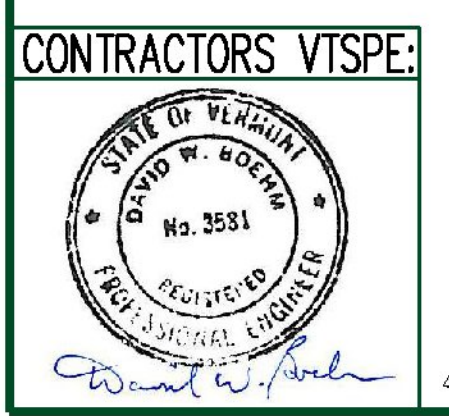


Rebar Reinforcing

Mark	Size	Max Spacing	Length	Type	A	B
*As1	#4	10"	33'-8"	Straight	404"	
*As2	#8	5"	15'-6"	L-Bar	84"	102"
As3	#8	5"	36'-4"	Hook End	404"	16"
*As4	#5	10"	8'-8"	Hook End	50"	27"
*As5	#5	10"	8'-6"	Straight	102"	
*As6	#4	18"	3'-10 1/4"	Straight	46 1/4"	
As7	#4	18"	3'-10 1/4"	Straight	46 1/4"	



Rigid Frame Joint Details



* - Rebar to be Epoxy Coated
 Note: 2" Min. Cover Typ. Unless Noted Otherwise

Note: All Rigid Frame & Headwall Reinforcing Shall be Level II

PRECAST CONCRETE RIGID FRAME SHOP DRAWINGS (SDI JOB# 13429)
 SUPERVISOR: M. WHEELER
 DETAILER: C. DUPLANTIS
 CHECKER: M. WHEELER
 ENGINEER: ENGINEERING VENTURES
 PROJECT NAME: WOODSTOCK
 PROJECT #: BRO 1444 (55)
 LOCATION: WOODSTOCK, VT
 BRIDGE: #23 ON TOWN HWY 6

CONTRACTOR:
 B.U.R. CONSTRUCTION
 CLAREMONT, NH 03743
 Ph: (603) 542-2801

FABRICATOR:
 193 INDUSTRIAL AVE.
 WILLISTON, VT 05495
 Ph: (802) 658-0201
SD Ireland
 Precast Division
 05/30/13 PRECAST RIGID FRAME DETAILS & SECTIONS 3 of 6