

NOTES:

- (+) INDICATES 0.6" # LOW RELAXATION STRAIGHT STRAND. AASHTO M203. BOTTOM ROWS OF STRANDS INITIAL TENSION 44 KIPS. TOP ROW OF STRANDS INITIAL TENSION 2 KIPS. 270 KSI MINIMUM ULTIMATE TENSILE STRENGTH.
- (@) INDICATES 0.6" # LOW RELAXATION DEBONDED STRAND AASHTO M203. DEBOND 6'-0" FROM END OF BEAM. INITIAL TENSION 44 KIPS. 270 KSI MINIMUM ULTIMATE TENSILE STRENGTH.
- CONCRETE COMPRESSIVE STRENGTH TESTED BY CYLINDER BREAK TEST.
- EACH STRAND SHALL BE FINALLY BURNED OR CUT OFF AT A DEPTH OF 3" INTO THE END OF THE BEAM AND THE RECESSED AREA AROUND THE STRAND SHALL BE FILLED WITH CONSPEC 100 NON-SHRINK, NON-METALLIC GROUT MANUFACTURED BY DAYTON SUPERIOR (THIS PRODUCT CAN BE FOUND ON THE PRE-APPROVED PRODUCTS LIST).
- OMIT SHEAR KEY ON EXPOSED EDGES.
- THE PRECASTER SHALL SANDBLAST SHEAR KEY FACES PRIOR TO DELIVERY.

MATERIAL SPECIFICATION:

CONCRETE MIX:
28 DAY STRENGTH: 7000 PSI
RELEASE STRENGTH: 5000 PSI
STRAND: AASHTO M203
MILD REINFORCING: ASTM A615M, GR 60
EPOXY COATED

FINISHES:
TOP: LONGITUDINAL BROOM FINISH
SIDES: STEEL FORM
BOTTOM: STEEL FORM
ENDS: FORM (SEE NOTE 4)

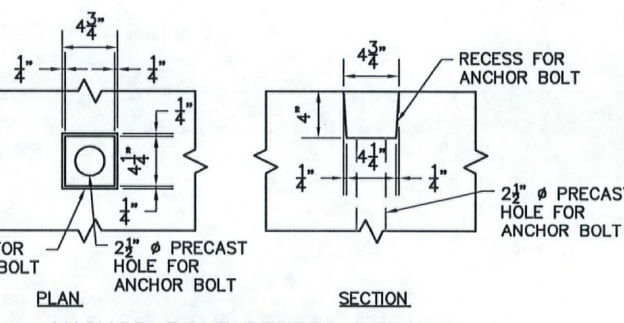
DUNNAGE:
STORAGE: BELOW LIFTING LOOPS
SHIPPING: BELOW LIFTING LOOPS

EXTERIOR BEAM:
TOTAL HEIGHT: 70.149 LBS
CONC. YARDAGE: 17.32 CY

INTERIOR BEAM:
TOTAL HEIGHT: 63.215 LBS
CONC. YARDAGE: 15.61 CY

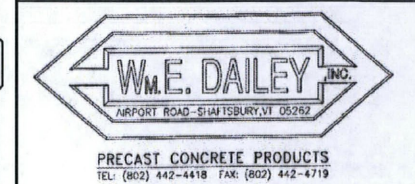
PARTS & PART NUMBERS

	B402E		B402L
	S502E		S402E
	B403E		B403L
	B404E		B404L
	B405E		B405L
	B406E		B406L
	B407E		B407L
	B408E		B408L
	B409E		B409L
	B410E		B410L
	B411E		B411L
	B412E		B412L
	B413E		B413L
	B414E		B414L
	B415E		B415L
	B416E		B416L
	B417E		B417L
	B418E		B418L
	B419E		B419L
	B420E		B420L



Vermont Agency of Transportation
RECEIVED
CK'D BY: *Timothy F. Beck* OK'D BY: *KMM*
3:26 pm, Jul 21, 2010
RESUBMIT APPROVED 43-00109
BY: *KMM* DATE: 7-23-2010

Hoyle, Tanner & Associates, Inc.
125 College Street, 4th Floor, Burlington, VT 05401
Tel: (802) 261-1331 Fax: (802) 261-4499 www.hoyletanner.com
© Copyright 2010 Hoyle, Tanner & Associates, Inc.
FORM NO. 100
REVISED: 01/2009



BRAINTREE, VT
T-11 23 CLASS II
BRIDGE #12
PROJECT NO: BRO 1444 (36)
SHEET 2 OF 5

033 Bar Beck