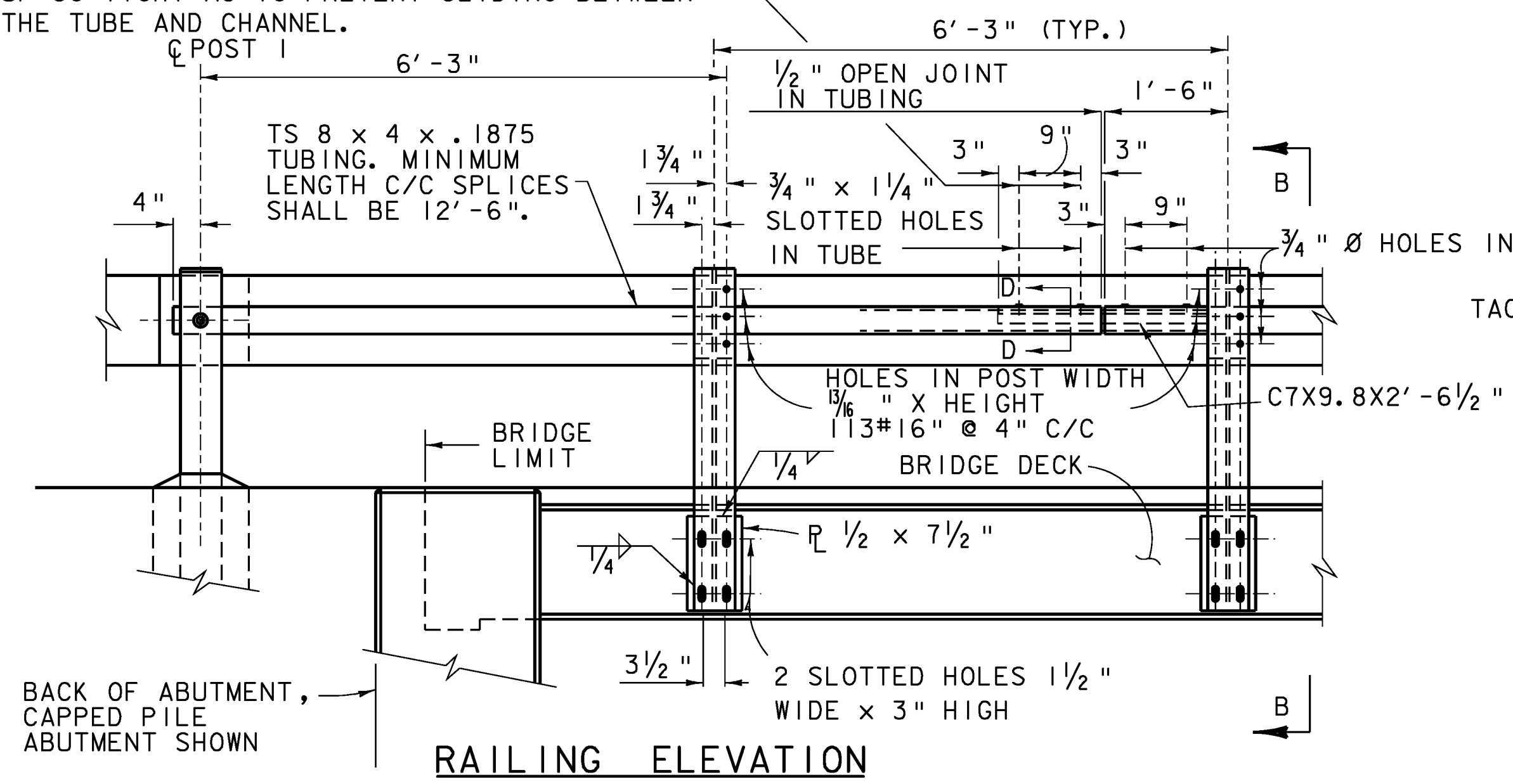
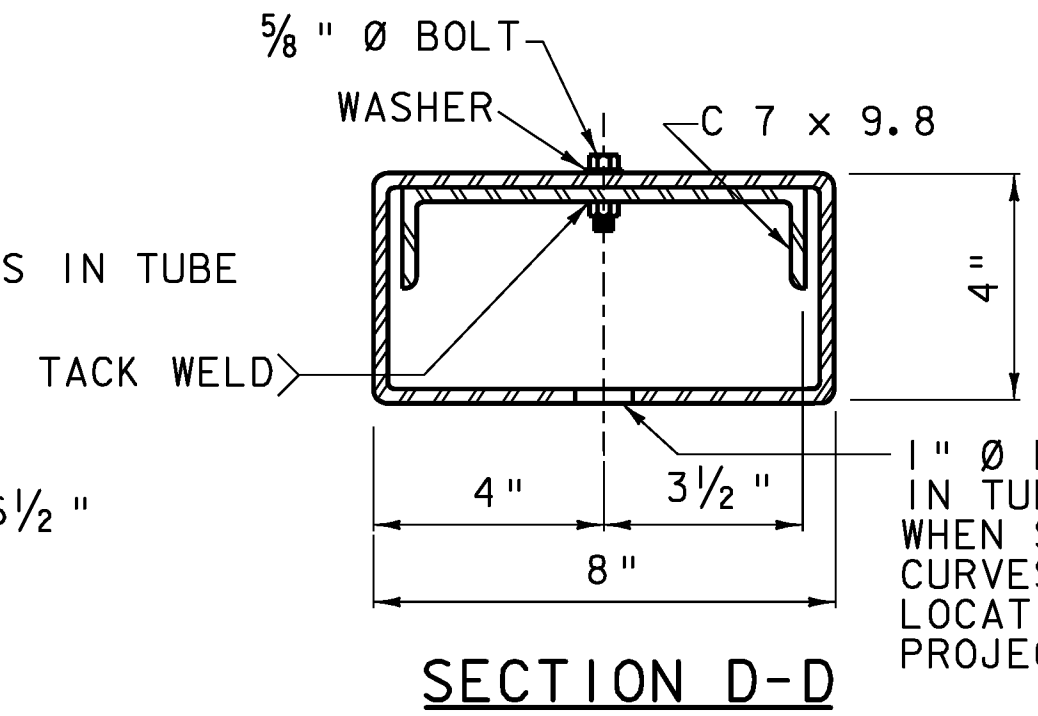


**FASCIA MOUNTED WITHOUT CURB NOTES**

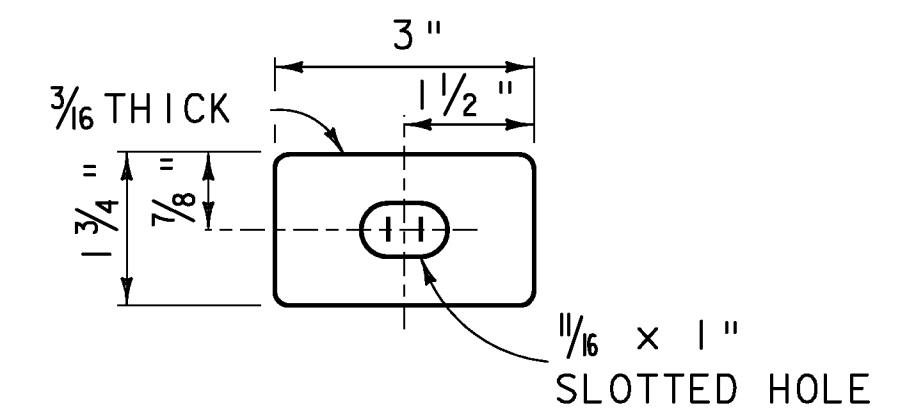
BOLTS IN SLOTTED HOLES SHALL NOT BE DRAWN UP SO TIGHT AS TO PREVENT SLIDING BETWEEN THE TUBE AND CHANNEL.



**RAILING ELEVATION**



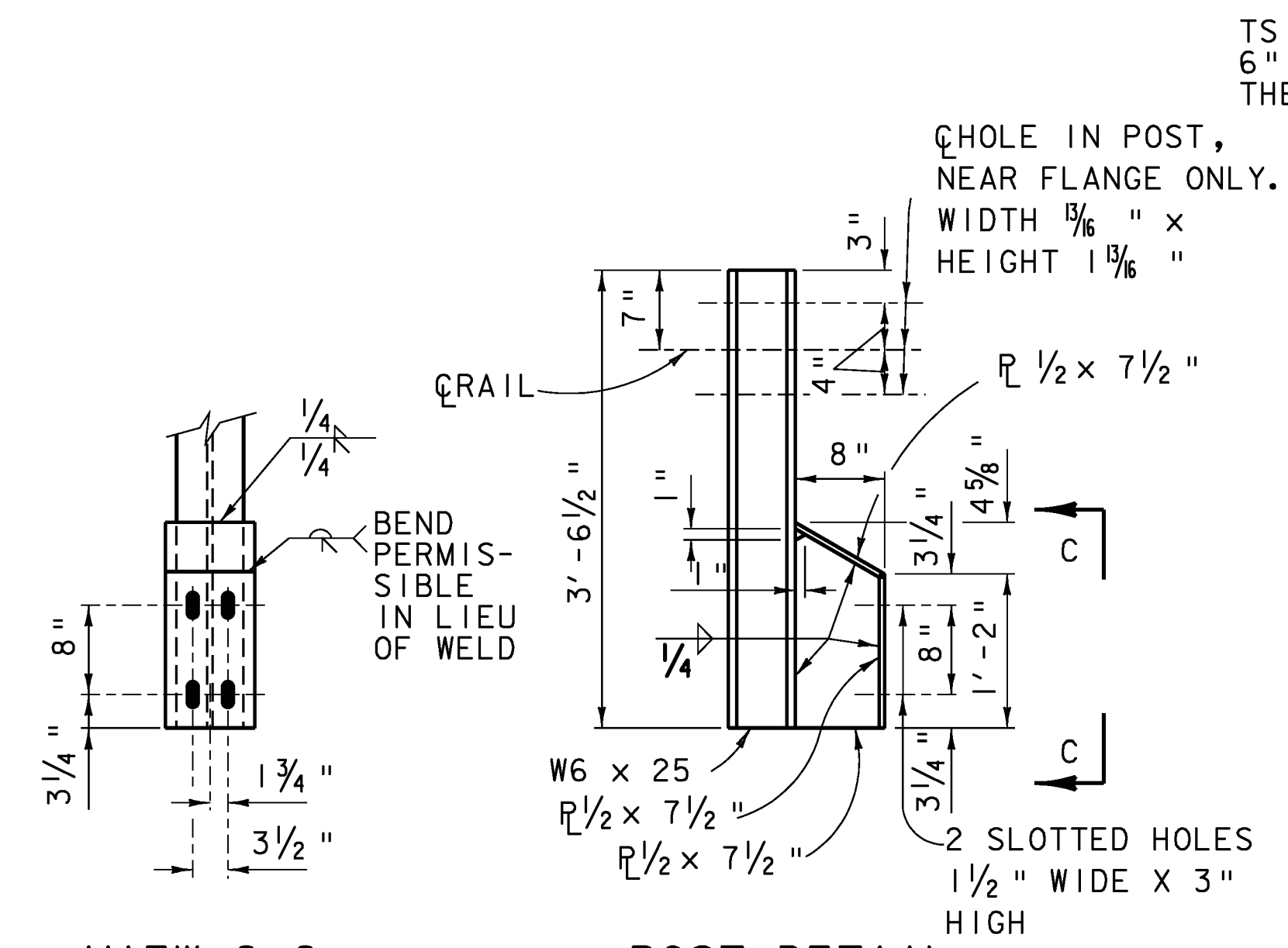
**SECTION D-D**



**SPECIAL WASHER**

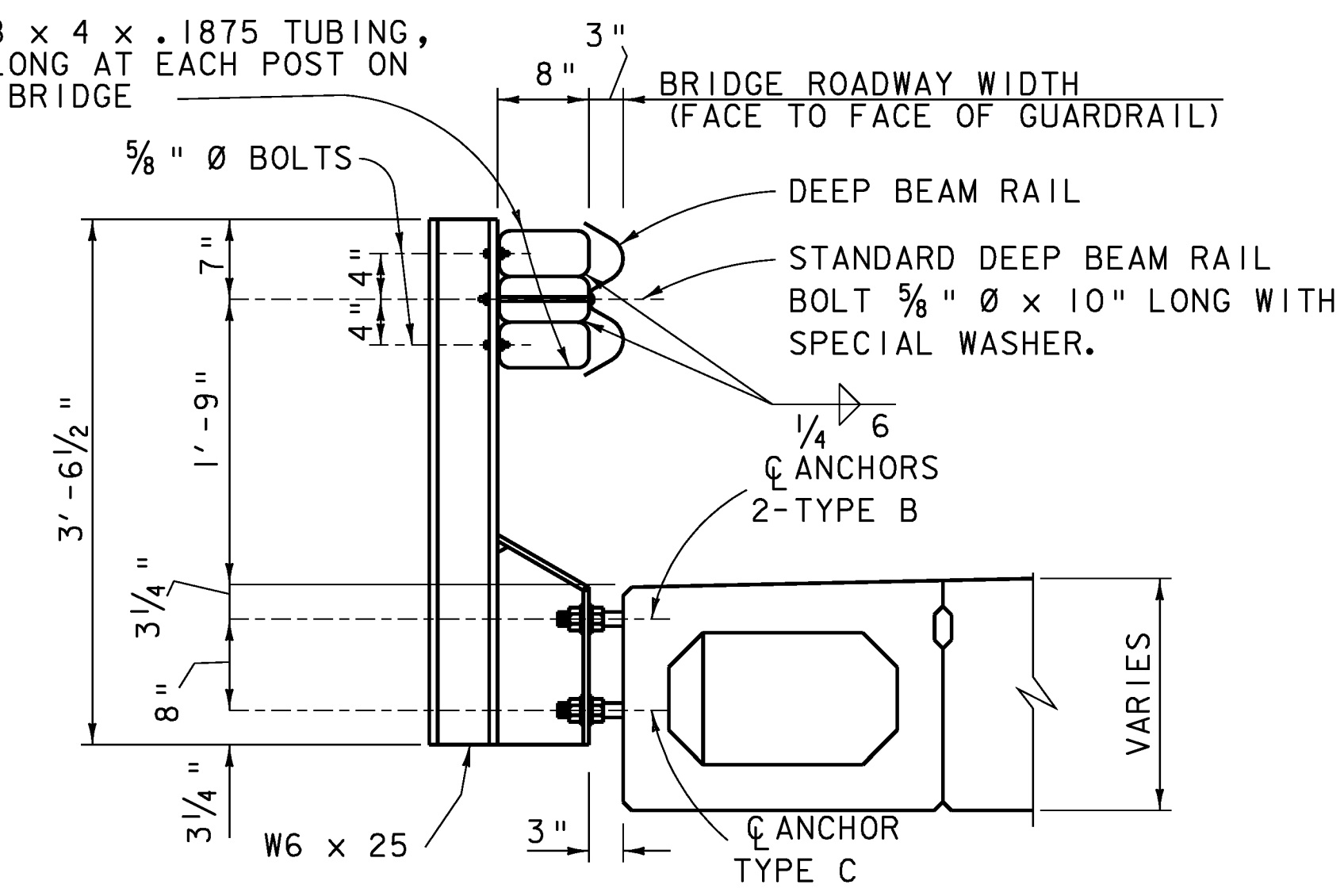
PLACE WASHER BETWEEN BOLT HEAD AND FACE OF RAIL.

- HEAVY DUTY STEEL BEAM GUARD RAIL SHALL CONFORM TO VT. SPECIFICATION SECTION 732.
- STRUCTURAL STEEL TUBING SHALL CONFORM TO VT. SPECIFICATION SECTION 732 GALVANIZED AFTER FABRICATION IN ACCORDANCE WITH AASHTO M111M/M111.
- ANCHOR BOLTS, NUTS AND WASHERS SHALL BE GALVANIZED IN ACCORDANCE WITH AASHTO M232M/M232 GALVANIZED AFTER FABRICATION IN ACCORDANCE WITH AASHTO M111M/M111.
- BRIDGE RAIL POSTS, SPECIAL WASHERS, PLATE WASHERS AND SPLICE BARS SHALL CONFORM TO AASHTO M223M/M223 GALVANIZED AFTER FABRICATION IN ACCORDANCE WITH AASHTO M111M/M111.
- ALL BOLTS AND RELATED HARDWARE SHALL CONFORM TO AASHTO M164 TYPE 1 BOLTS, HOT DIPPED OR MECHANICALLY GALVANIZED PER SPECIFICATION.
- SEE STANDARD DRAWING G-1 AND G-1d FOR ADDITIONAL DETAILS CONCERNING GUARD RAIL.
- SEE STANDARD DRAWING SB-R6-82 FOR APPROACH RAIL DETAILS AND FOR INFORMATION RELATIVE TO SCHEDULE I AND SCHEDULE II. ALL APPROACH RAIL SHALL BE HEAVY DUTY STEEL BEAM GUARD RAIL. ALSO SEE STD. DRWG. SB-R6-82 FOR HANDRAIL DETAILS (EXCEPT END DETAILS) IF HAND RAIL IS REQUIRED.
- ALL POSTS SHALL BE SET NORMAL TO GRADE.
- SPLICES FOR THE STEEL BEAM GUARD RAIL SHALL LAP IN THE DIRECTION OF TRAFFIC.
- SEE STANDARD DRAWING G-1 FOR DETAILS OF DELINEATORS. A DELINEATOR SHALL BE LOCATED AT EVERY FIFTH POST. PAYMENT SHALL BE INCIDENTAL TO OTHER ITEMS.
- A RAILING JOINT SPLICE SHALL BE PROVIDED AT EACH SUPERSTRUCTURE EXPANSION JOINT.
- ALL FIELD CUT OR DRILLED AREAS SHALL BE REPAIRED PER SECTION 513.
- FOR RADIUS LESS THAN 950 FEET, THE STEEL TUBING SHALL BE SHOP BENT TO FIT THE APPLICABLE CURVE.
- THE DROP-WEIGHT TEAR TEST IN SECTION 732 SHALL NOT APPLY TO THE STRUCTURAL TUBING.

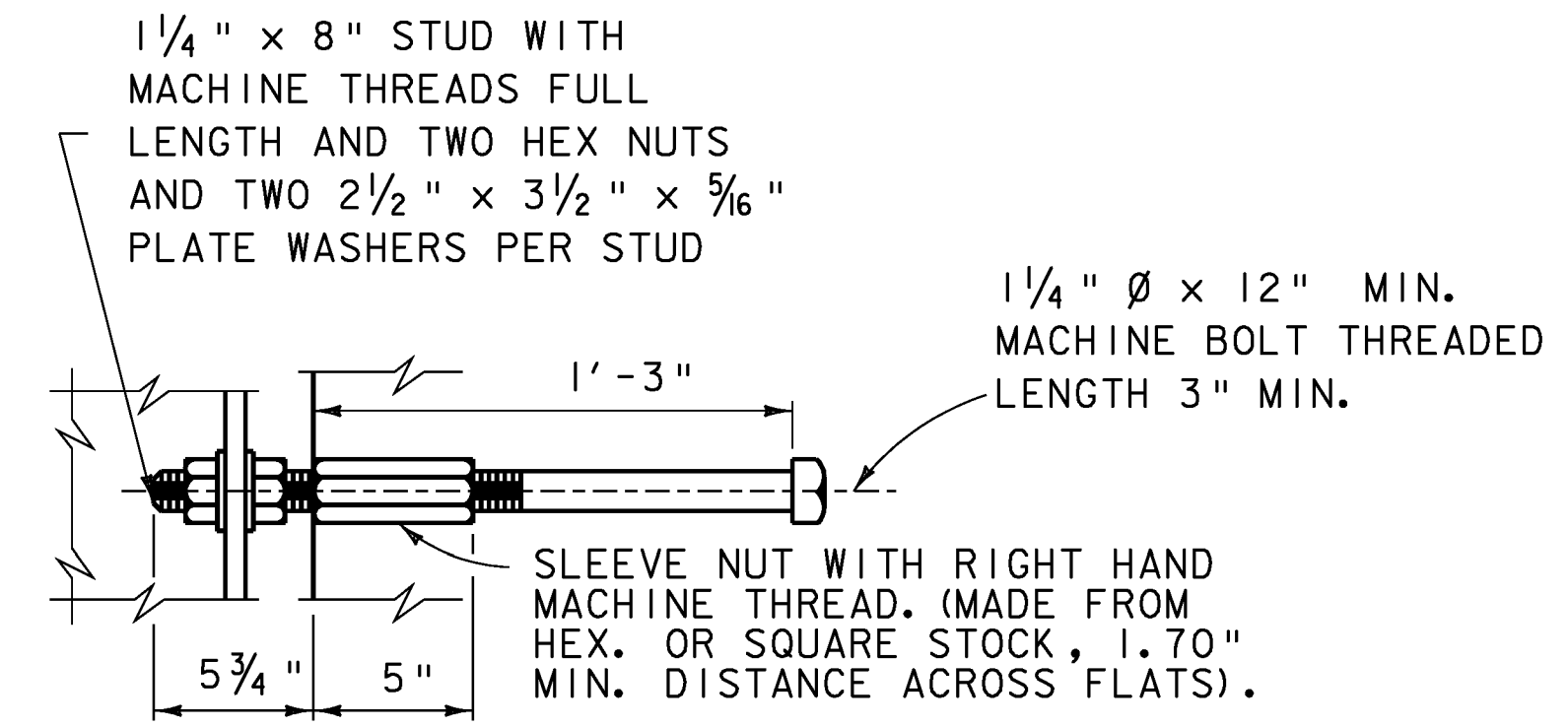


**VIEW C-C**

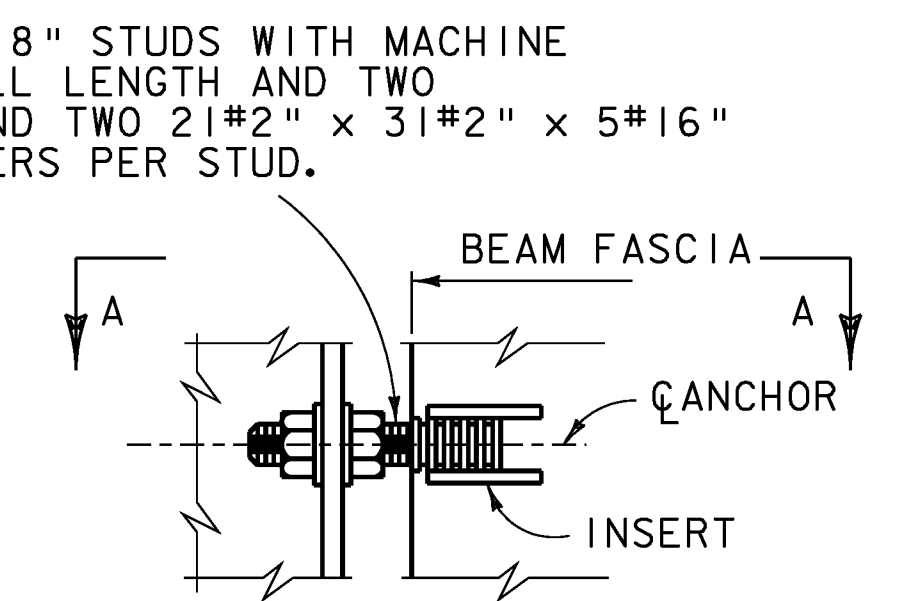
**POST DETAIL**



**SECTION B-B**



**TYPE B ANCHOR DETAIL**



**SECTION A-A  
TYPE C ANCHOR DETAIL**

NOTE:  
ALTERNATE TYPE C ANCHOR MAY BE SUBMITTED FOR ACCEPTANCE. FERRULE SHALL BE DAYTON SUPERIOR F-43 PLAIN OR EQUIVALENT.

PROJECT NAME:	BRAINTREE
PROJECT NUMBER:	BRO 1444(36)
FILE NAME:	s95J292Raildet.dgn
PROJECT LEADER:	K. HIGGINS
DESIGNED BY:	T. FILLBACH
RAIL DETAIL	
PLOT DATE:	31-DEC-2009
DRAWN BY:	G. LAROCHE
CHECKED BY:	T. FILLBACH
SHEET	22 OF 26

N. T. S.