

CURVE #1

DELTA = 24°55'00"
 D = 28°38'52"
 R = 200.00'
 T = 44.19'
 L = 86.98'
 E = 4.82'

CURVE #2

DELTA = 14°02'00"
 D = 19°05'55"
 R = 300.00'
 T = 36.92'
 L = 73.48'
 E = 2.26'

REMOVAL AND DISPOSAL OF GUARDRAIL

STA 11+04.3 - 11+38.8 LT
 STA 11+07.0 - 11+37.4 RT
 STA 11+80.1 - 12+17.8 LT
 STA 11+80.3 - 12+18.9 RT

REMOVAL OF EXISTING FENCE

STA 10+50.0 - 11+25.0 RT
 STA 10+75.0 - 11+00.0 LT

SPECIAL PROVISION (BRIDGE RAILING/ GALVANIZED HDSB/ FASCIA MOUNTED/STEEL TUBING)

STA 11+17.5 - 11+92.5 LT
 STA 11+17.5 - 11+92.5 RT

HD STEEL BEAM GUARDRAIL, GALVANIZED W/8 FEET POSTS

STA 10+82.3 - 11+17.5 LT
 STA 10+77.3 - 11+17.5 RT
 STA 11+92.5 - 12+28.0 LT
 STA 11+92.5 - 12+31.4 RT

ANCHOR FOR STEEL BEAM RAIL

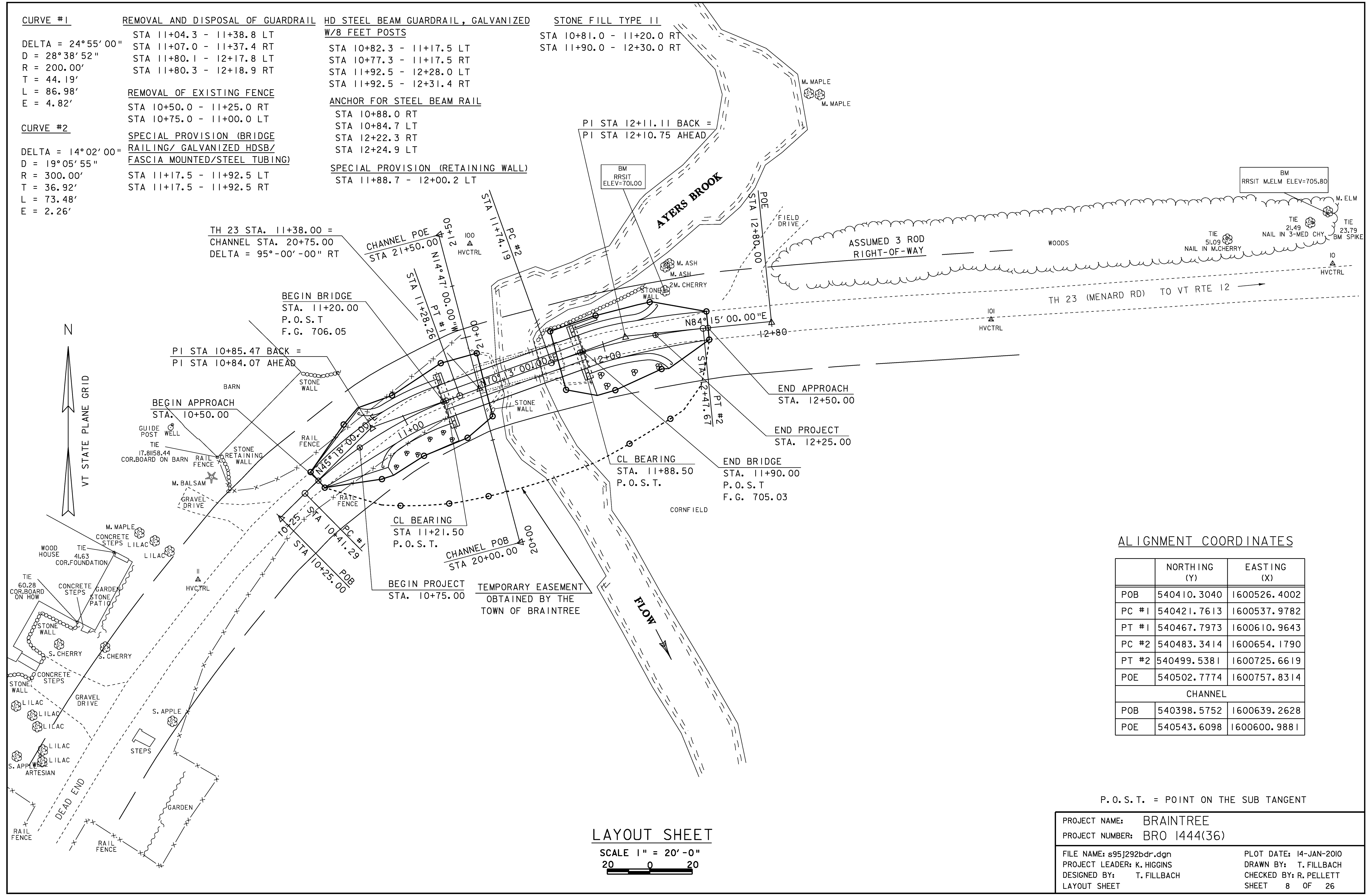
STA 10+88.0 RT
 STA 10+84.7 LT
 STA 12+22.3 RT
 STA 12+24.9 LT

SPECIAL PROVISION (RETAINING WALL)

STA 11+88.7 - 12+00.2 LT

STONE FILL TYPE II

STA 10+81.0 - 11+20.0 RT
 STA 11+90.0 - 12+30.0 RT



TH 23 STA. 11+38.00 =
 CHANNEL STA. 20+75.00
 DELTA = 95°-00'-00" RT

BEGIN BRIDGE
 STA. 11+20.00
 P. O. S. T.
 F. G. 706.05

PI STA 10+85.47 BACK =
 PI STA 10+84.07 AHEAD

BEGIN APPROACH
 STA. 10+50.00

END APPROACH
 STA. 12+50.00

END PROJECT
 STA. 12+25.00

CL BEARING
 STA. 11+88.50
 P. O. S. T.

END BRIDGE
 STA. 11+90.00
 P. O. S. T.
 F. G. 705.03

CL BEARING
 STA 11+21.50
 P. O. S. T.

BEGIN PROJECT
 STA. 10+75.00

CHANNEL POB
 STA 20+00.00

ALIGNMENT COORDINATES

	NORTHING (Y)	EASTING (X)
POB	540410.3040	1600526.4002
PC #1	540421.7613	1600537.9782
PT #1	540467.7973	1600610.9643
PC #2	540483.3414	1600654.1790
PT #2	540499.5381	1600725.6619
POE	540502.7774	1600757.8314
CHANNEL		
POB	540398.5752	1600639.2628
POE	540543.6098	1600600.9881

P. O. S. T. = POINT ON THE SUB TANGENT

LAYOUT SHEET

SCALE 1" = 20'-0"
 20 0 20

PROJECT NAME:	BRAINTREE
PROJECT NUMBER:	BRO 1444(36)
FILE NAME:	s95j292bdr.dgn
PROJECT LEADER:	K. HIGGINS
DESIGNED BY:	T. FILLBACH
LAYOUT SHEET	
PLOT DATE:	14-JAN-2010
DRAWN BY:	T. FILLBACH
CHECKED BY:	R. PELLETT
SHEET	8 OF 26