

GPS CONTROL POINTS

HVCTRL #1

SNOWSVILLE AZ MK  
 NORTH = 548570.766  
 EAST = 1599864.917  
 ELEV. = 781.69

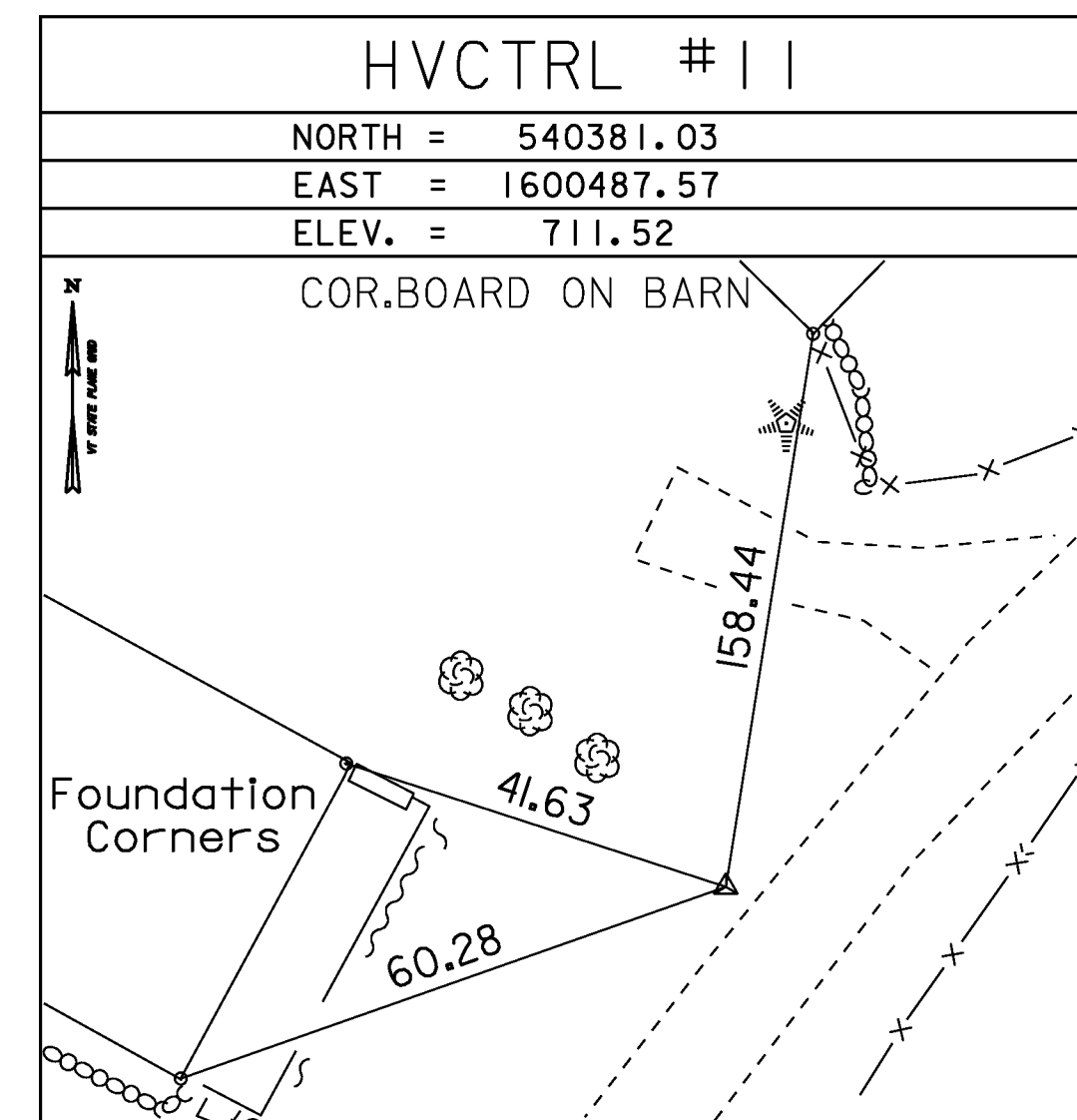
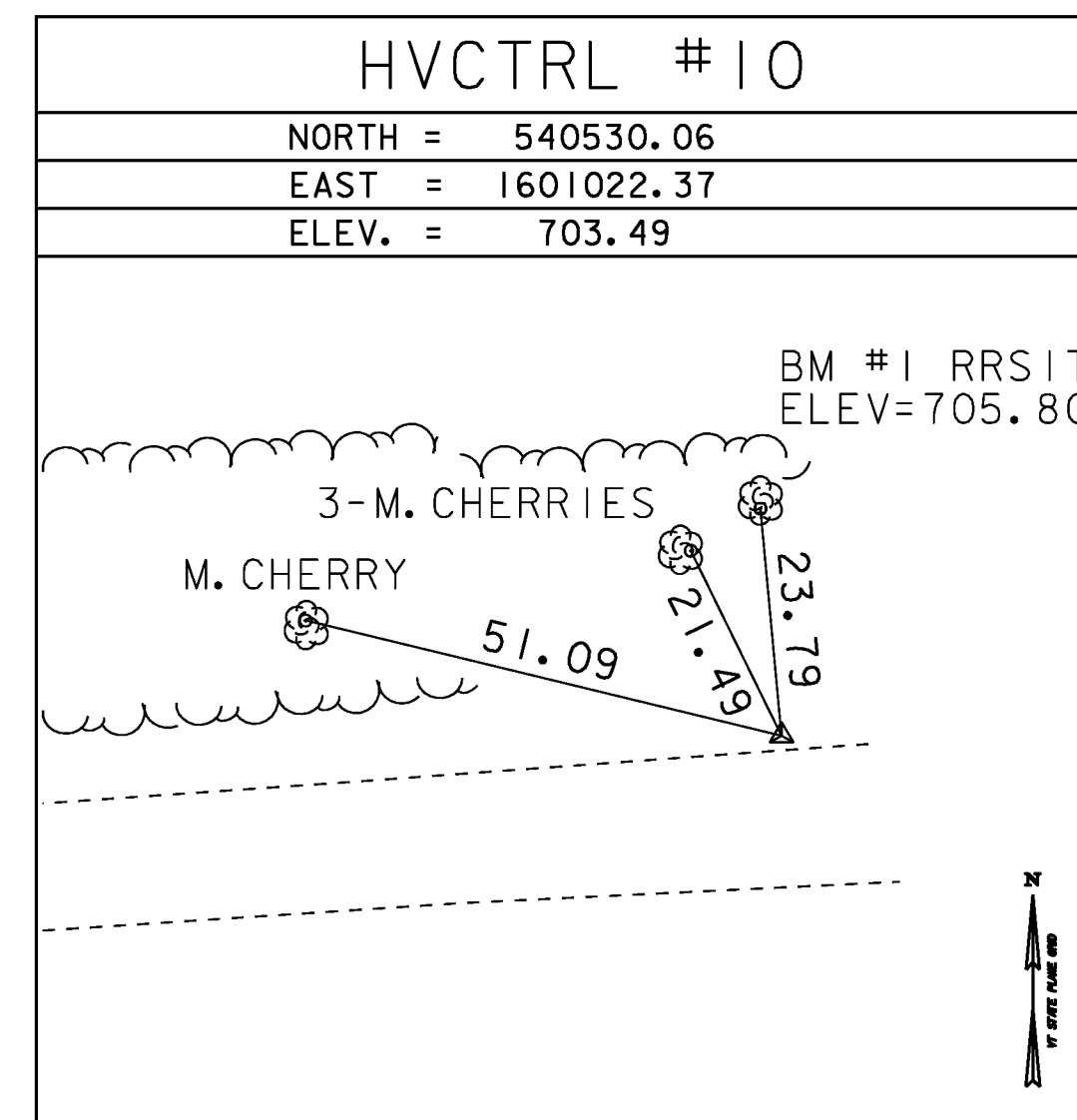
DESCRIBED BY VERMONT AGENCY OF TRANSPORTATION 1996 (DJM) GENERAL LOCATION - THE STATION IS LOCATED IN THE TOWN OF EAST BRAINTREE, 0.6 MI (1.0 KM) NORTH OF EAST BRAINTREE VILLAGE, 5.8 MI (9.3 KM) NORTH NORTHEAST OF RANDOLPH, AND 11.3 MI (18.2 KM) SOUTH OF NORTHFIELD. TO REACH FROM THE JUNCTION OF VERMONT ROUTE 12 AND VERMONT ROUTE 66 IN RANDOLPH, PROCEED NORTHERLY ALONG ROUTE 12 FOR 5.7 MI (9.2 KM) TO THE MARK ON THE RIGHT. TO REACH FROM THE JUNCTION OF VERMONT ROUTE 12 AND THE ROAD TO WEST BROOKFIELD, PROCEED SOUTH ALONG ROUTE 12 FOR 0.75 MI (1.21 KM) TO THE MARK ON THE LEFT. THE MARK IS A STATE OF VERMONT SURVEY DISK SET IN THE TOP OF A CONCRETE MONUMENT 30 CM IN DIAMETER, FLUSH WITH THE GROUND SURFACE. IT IS LOCATED 141 FT (43.0 M) NORTH NORTHEAST OF UTILITY POLE 136/19, 129 FT (39.3 M) SOUTH OF A SIGN (BRAINTREE / BROOKFIELD), 60.5 FT (18.4 M) SOUTH OF A MAILBOX, 22 FT (6.7 M) SOUTHEAST OF THE CENTERLINE OF VERMONT ROUTE 12, AND 3 FT (0.9 M) NORTHWEST OF A FIBERGLASS WITNESS POST. OWNERSHIP IS THE STATE OF VERMONT.

HVCTRL #2

SNOWSVILLE  
 NORTH = 546460.357  
 EAST = 1600026.324  
 ELEV. = 753.84

EAST BRAINTREE VILLAGE, 5.3 MI (8.5 KM) NORTH NORTHEAST OF RANDOLPH, AND 11.8 MI (19.0 KM) SOUTH OF NORTHFIELD. TO REACH FROM THE JUNCTION OF VERMONT ROUTE 66 AND VERMONT ROUTE 12 IN RANDOLPH, PROCEED NORTHERLY ALONG ROUTE 12 FOR 5.3 MI (8.5 KM) TO THE MARK ON THE RIGHT. TO REACH FROM THE JUNCTION OF VERMONT ROUTE 12 AND THE ROAD TO WEST BROOKFIELD, PROCEED 1.15 MI (1.85 KM) SOUTH ALONG ROUTE 12 TO THE MARK ON THE LEFT. THE MARK IS A STATE OF VERMONT SURVEY DISK SET IN THE TOP OF A CONCRETE MONUMENT 30 CM IN DIAMETER, FLUSH WITH THE GROUND SURFACE. IT IS LOCATED 130 FT (39.6 M) NORTH OF A HIGHWAY SIGN (EAST BRAINTREE), 68.5 FT (20.9 M) SOUTH SOUTHEAST OF UTILITY POLE 13 1/2 / 130X, 36.5 FT (11.1 M) SOUTHWEST OF HIGHWAY SIGN (REDUCED SPEED AHEAD), 17.5 FT (5.3 M) EAST OF THE CENTERLINE OF VERMONT ROUTE 12, 5 FT (1.5 M) WEST OF A WOODEN FENCE, AND 3 FT (0.9 M) WEST OF A FIBERGLASS WITNESS POST. OWNERSHIP IS THE STATE OF VERMONT

TRAVERSE TIES



NORTH =
EAST =
ELEV. =

NORTH =
EAST =
ELEV. =

NORTH =
EAST =
ELEV. =

\* Main Traverse Completed 10/03/06 by R.Gilman P.C. & R.Moreau

ALIGNMENT TIES

NORTH =
EAST =
ELEV. =

NORTH =
EAST =
ELEV. =

NORTH =
EAST =
ELEV. =

NORTH =
EAST =
ELEV. =

NORTH =
EAST =
ELEV. =

DATUM  
 VERTICAL NAVD 88  
 HORIZONTAL NAD 83 (92)  
 ADJUSTMENT Compass

PROJECT NAME: Braintree  
 PROJECT NUMBER: BRO 1444 (36)  
 FILE NAME: survey\x95j292+1.dgn  
 PROJECT LEADER: K. HIGGINS  
 DESIGNED BY: SURVEY  
 TIE SHEET

PLOT DATE: 31-DEC-2009  
 DRAWN BY: R. Bullock  
 CHECKED BY: SURVEY  
 SHEET 7 OF 26