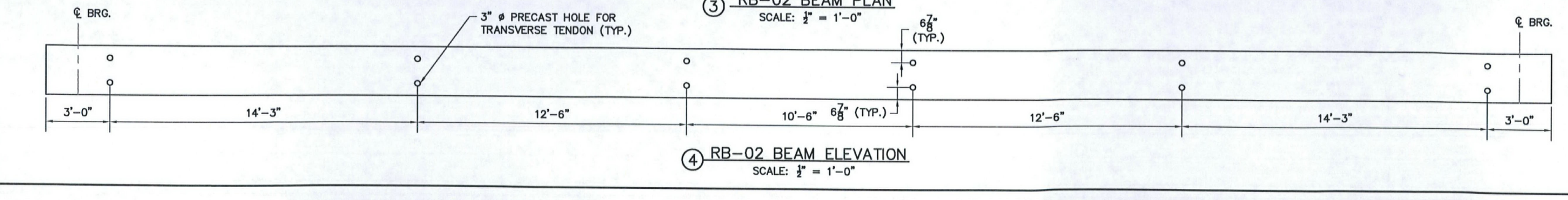
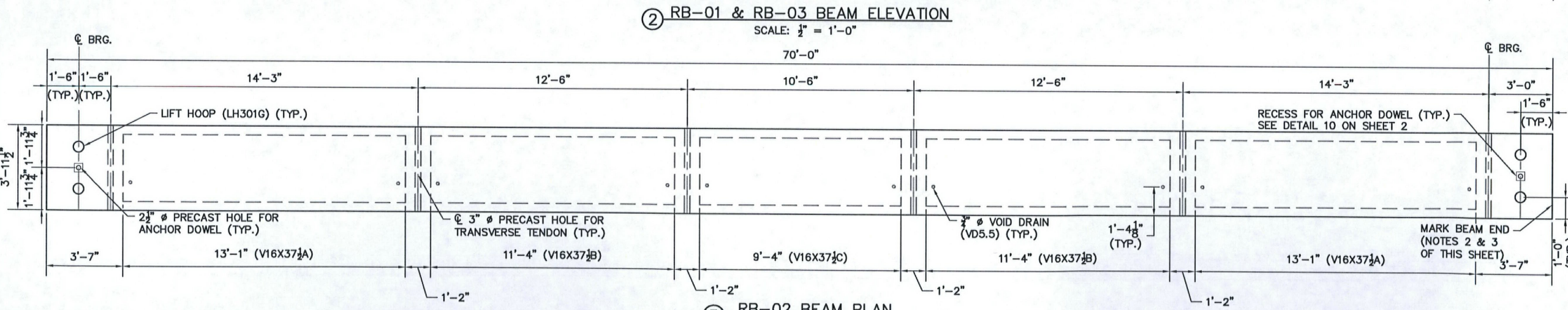
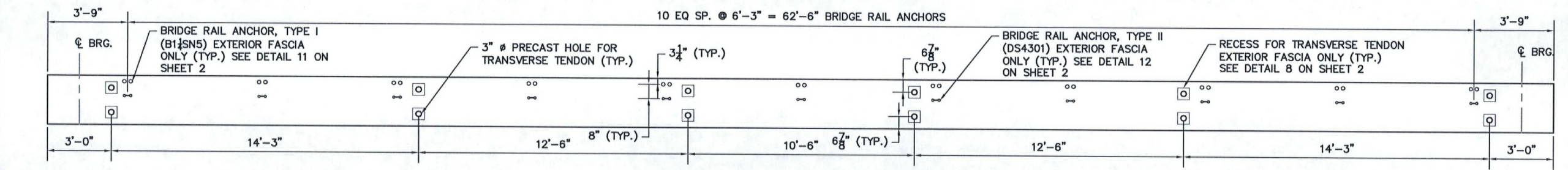
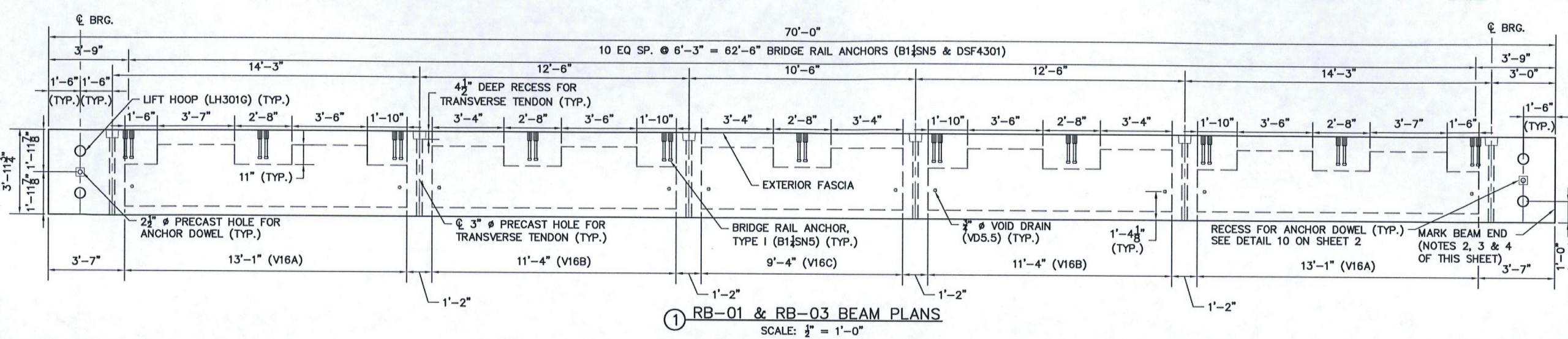


- GENERAL NOTES:**
- SEE DRAWINGS 1, 2, & 3 FOR PLANS AND DETAILS.
 - ALL BEAMS ARE LABELED AS FOLLOWS
PRODUCT TYPE-IDENTIFICATION NUMBER-SEQUENCE NUMBER
 - MARK BEAMS RB-01 & RB-02 ENDS "EAST END" FOLLOWED BY THE CORRESPONDING BEAM LABEL.
 - MARK BEAM RB-03 END "WEST END" FOLLOWED BY THE CORRESPONDING BEAM LABEL.
 - THE BAR QUANTITIES LISTED ARE FOR THE SELECTED SOLID HOOP STRIPUP CONFIGURATION. IF IT IS DECIDED TO USE THE BAR ALTERNATIVES OF 2 INTERLOCKING "U" BARS THAN THE BAR QUANTITIES FOR THOSE BARS WILL NEED TO BE DOUBLED. SEE SHEET 2 OF 4 FOR BAR CONFIGURATIONS.

Vermont Agency of Transportation
RECEIVED
 CK'D BY *Timothy F. Bouch* OK'D BY *KSHH*
 3:26 pm, Jul 21, 2010
 RESUBMIT BY *KSHH* APPROVED DATE 7/23/2010

PART NO.	DESCRIPTION	QTY.
RB-01 & RB-03 BEAMS		
B400E	#4 BENT	16
S501E	#5 STRAIGHT	8
S502E	#5 STRAIGHT	8
B403E	#4 BENT	12
B404E	#4 BENT	16
B405E	#4 BENT	4
B309E	#3 BENT	80
B407E	#4 BENT	50
S408E	#4 STRAIGHT	30
B409E	#4 BENT	30
RB-02 BEAM		
B400E	#4 BENT	16
S501E	#5 STRAIGHT	8
S502E	#5 STRAIGHT	8
B403E	#4 BENT	12
B404E	#4 BENT	16
B405E	#4 BENT	4
B309E	#3 BENT	80
B407E	#4 BENT	70
S408E	#4 STRAIGHT	30
DETAILS		
VD3.5	3" # VOID DRAIN 3" LONG	10
LH3010	LIFT HOOP (3) 2" STRANDS	4
V16A	16" VOID, 13"-1" LONG	2
V16B	16" VOID, 11"-4" LONG	2
V16C	16" VOID, 9"-4" LONG	1
DS4301	1" FERRULE INSERT	22
BF2NS	1/2" DIA. 1'-0" LONG, WITH 3" SLEEVE NUT	22
VERMONT STATE MIX DESIGN		
RB-02 BEAM		
VD3.5	3" # VOID DRAIN 3" LONG	10
LH3010	LIFT HOOP (3) 2" STRANDS	4
V16X37A	16"X37" VOID, 13"-1" LONG	2
V16X37B	16"X37" VOID, 11"-4" LONG	2
V16X37C	16"X37" VOID, 9"-4" LONG	1
VERMONT STATE MIX DESIGN		



Hoyle, Tanner & Associates, Inc.
 125 College Street, 4th Floor Braintree, VT 05401
 Tel: (802) 860-1351 Fax: (802) 860-4489 www.hoyletanner.com
 © Copyright 2010 Hoyle, Tanner & Associates, Inc.

W.M. DAILEY
 PRECAST CONCRETE PRODUCTS
 100 West Street, Braintree, VT 05401

BRAINTREE, VT
 T.H. 23 CLASS III
 BRIDGE #12
 PROJECT NO.: BR0 1444 (36)
SHEET 4 OF 5

035 Bar Beam