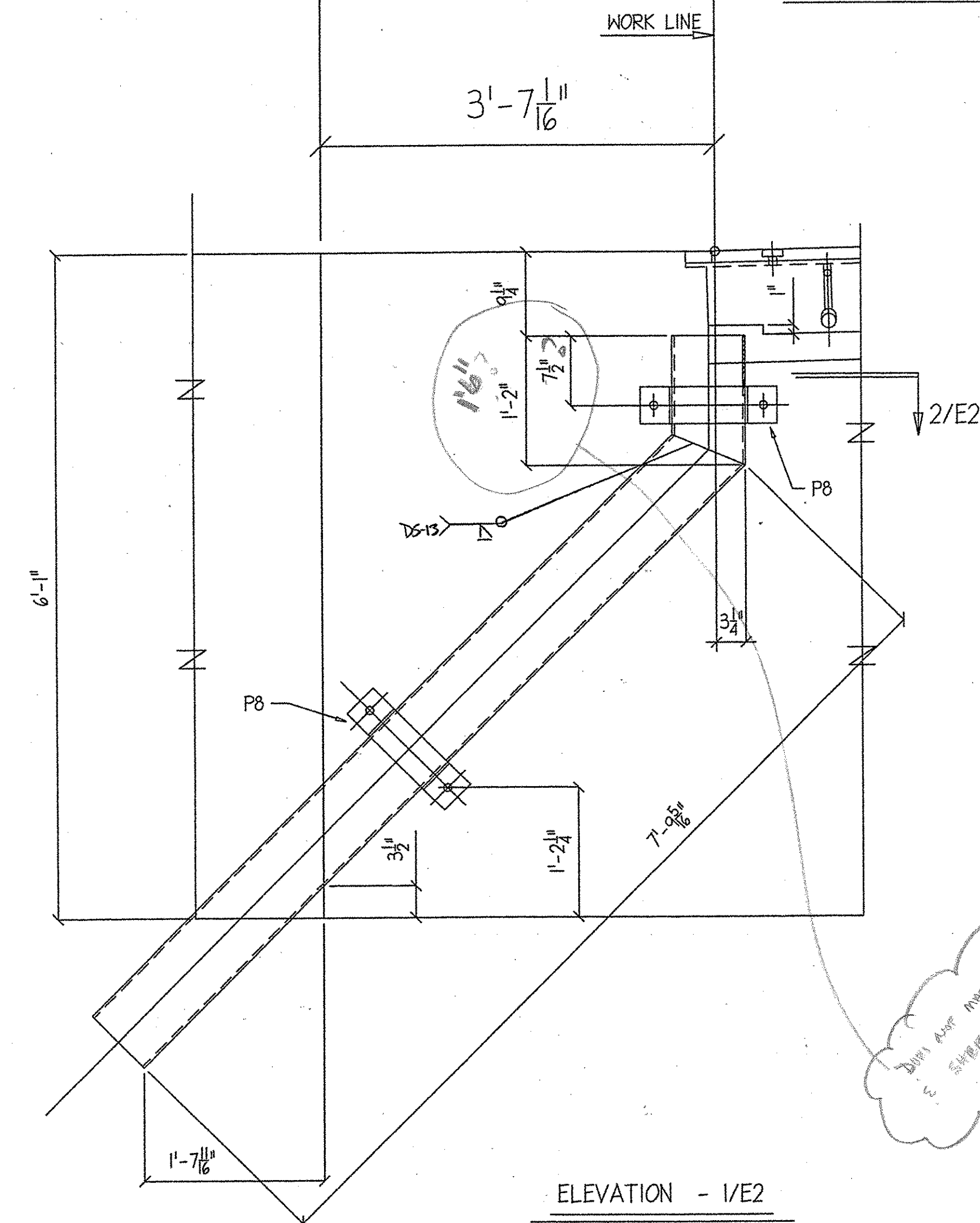
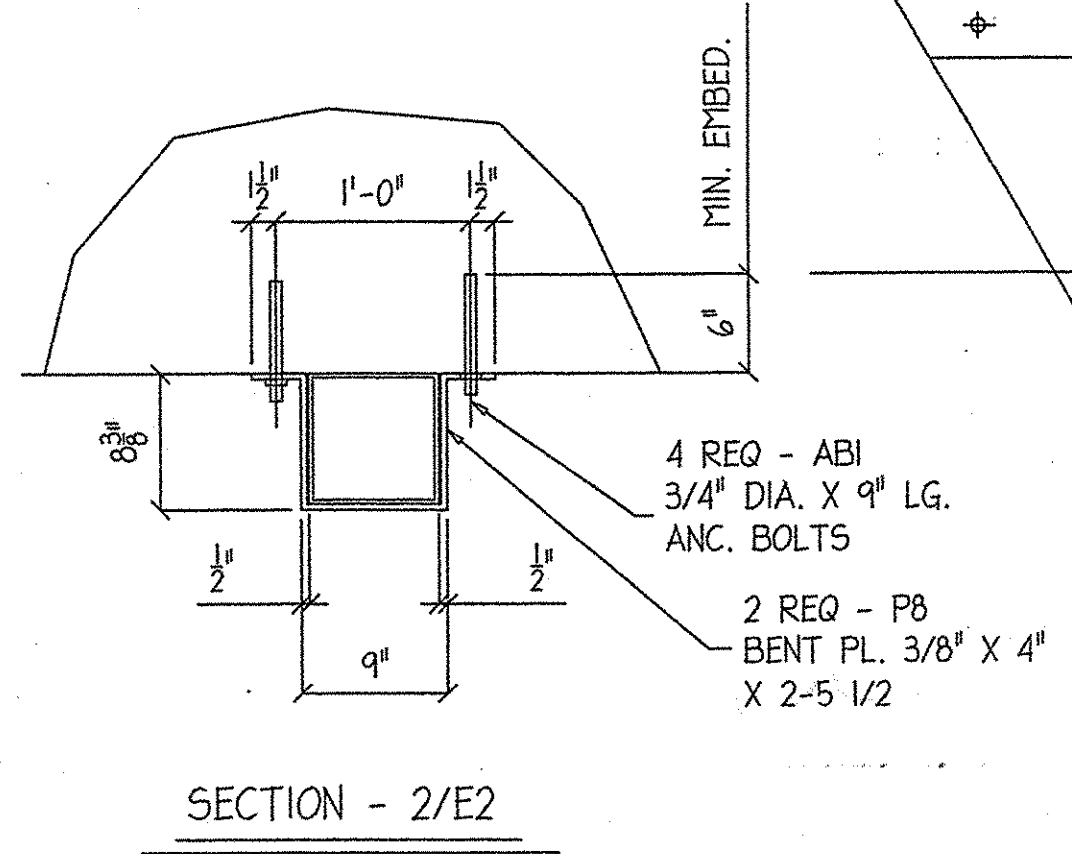


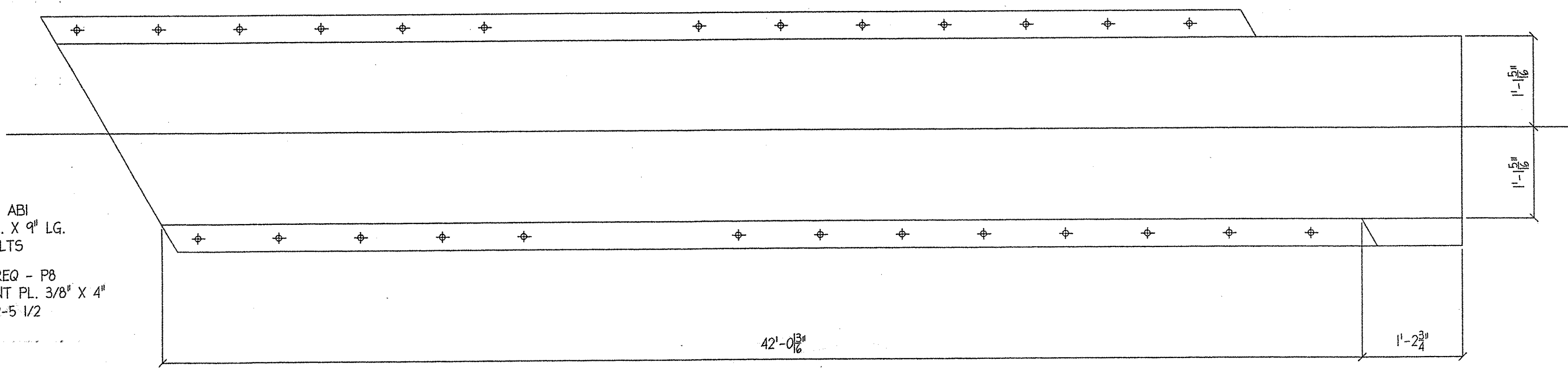
DOWNSPOUT & FABRIC TROUGH PLAN



ELEVATION - 1/E2



SECTION - 2/E2



FABRIC TROUGH  
1/4" X 2-10 5/8 X 42-0 13/16  
1.) MATCH BOLT HOLES TO 1 1/4" PL. (P1 to P4)

Downspout match Connector Tubes & Support FL

NOTES:

- HOLLOW STRUCTURAL STEEL TUBING SHALL CONFORM TO A-500 OR A-501.
- ALL PLATES, BAR, AND ANGLES SHALL CONFORM TO AASHTO A709/A709M.
- DOWNSPOUT SHALL BE GALVANIZED IN ACCORDANCE WITH AASHTO M111 AFTER FABRICATION.
- ALL BOLTS AND RELATED HARDWARE SHALL BE ASTM A-307 AND SHALL BE GALVANIZED IN ACCORDANCE WITH ASTM A-153 (AASHTO M232).

RECEIVED  
APR 13 2006  
BY: *WJ/SJS* DATE: *3/17/06*

DOWNSPOUT & FABRIC TROUGH PLANS			
DATE SUB.	PROJECT	MENDON VT. BRIDGE	
	LOCATION	RT. # THH, CL2	
	ARCHITECT	MENDON, VT.	
DATE APP.	ENGINEER	STATE OF VERMONT, AGENCY OF TRANSPORTATION	
DATE DIST.	CUSTOMER	F.W. WHITCOMB CONST.	

REV. NO.	DATE	DESCRIPTION
HOLE:	13/16" (U.N.O.)	DATE: 3-25-06
PAINT:		

**MERRIMACK** MERRIMACK SHEET METAL  
119 HALL ST.  
CONCORD, N.H., 03301  
TEL. (603) 224-7766  
FAX. (603) 224-7925

MISCELLANEOUS IRON STRUCTURAL STEEL FABRICATORS

DR BY	KJM
REV BY	
JOB NO.	0727
DWG NO.	E2