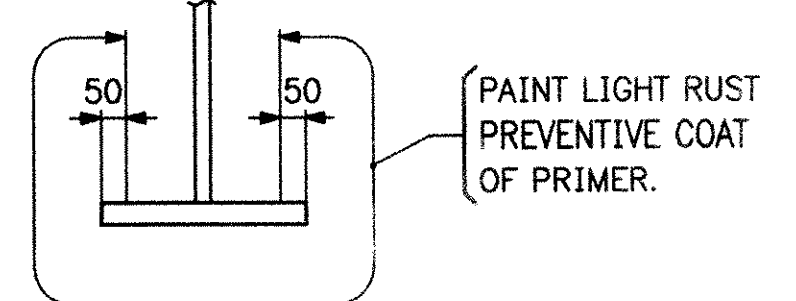


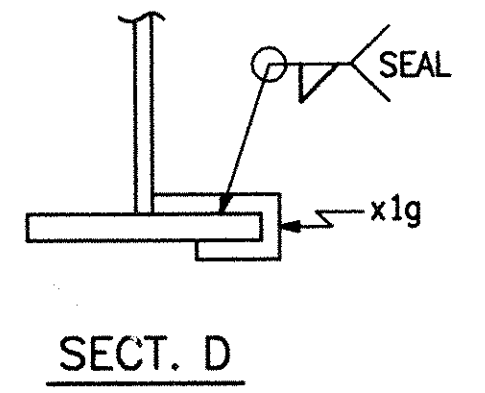
ABM INFO		SHIP		BILL OF MATERIAL				JOB NO. 6085	
PAGE	LINE	MARK	QTY.	MARK	MATERIAL	LENGTH MILLIMETERS	REMARKS	WEIGHT	REQUIREMENT NOTES
		5G5A	ONE		GIRDEP			11 459 kg	
1	13		1	WB1	PL 16 x 1372	12 217	M270M-345WT2		
1	12		1	WB2	PL 16 x 1372	21 200	M270M-345WT2		
1	18		1	TF1	PL 22 x 406	22 220			
1	19		1	TF2	PL 22 x 406	11 260			
1	20		1	BF1	PL 28 x 406	22 220	M270M-345WT2		
1	21		1	BF2	PL 28 x 406	11 220	M270M-345WT2		
2	2		1	x1a	PL 22 x 195	1372			
2	2		1	x1b	PL 22 x 195	1372			
2	2		1	x1h	PL 22 x 195	1374			
2	2		1	x1m	F 22 x 195	1374			
2	3		6	x1c	PL 14 x 185	1372			
2	4		1	x1g	PL 6 x 80	275			

PAINT ALL AROUND (UN) SEE SHT. GN1

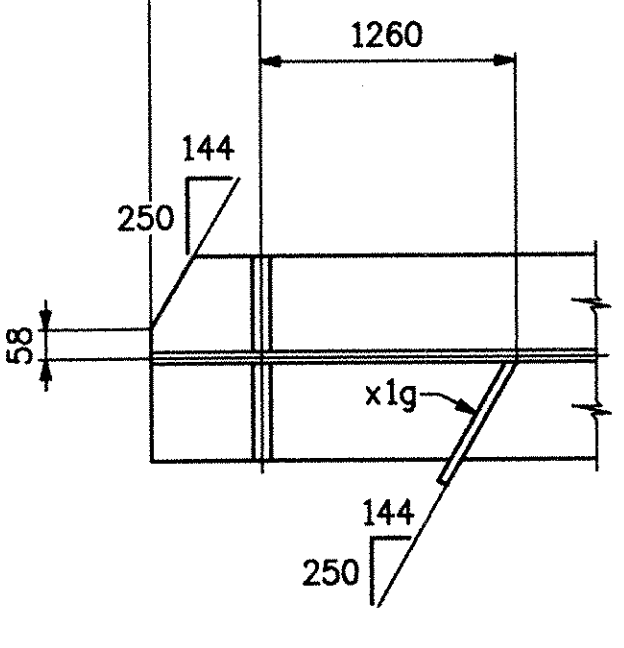


SECT. PC (STIFFS. NOT SHOWN)

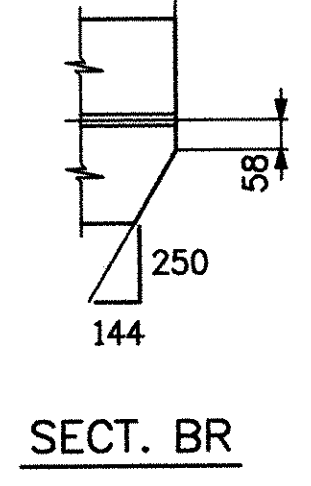
ONE ~ GIRDER ~ 5G5A  
 FOR GDR. STANDARD DETAILS, SEE SHT. X1  
 FOR WEB CAMBER & FLANGE DIAGRAM SEE SHT. WC5.  
 FOR GENERAL NOTES & TYPICAL DETAILS SEE SHT. GN1



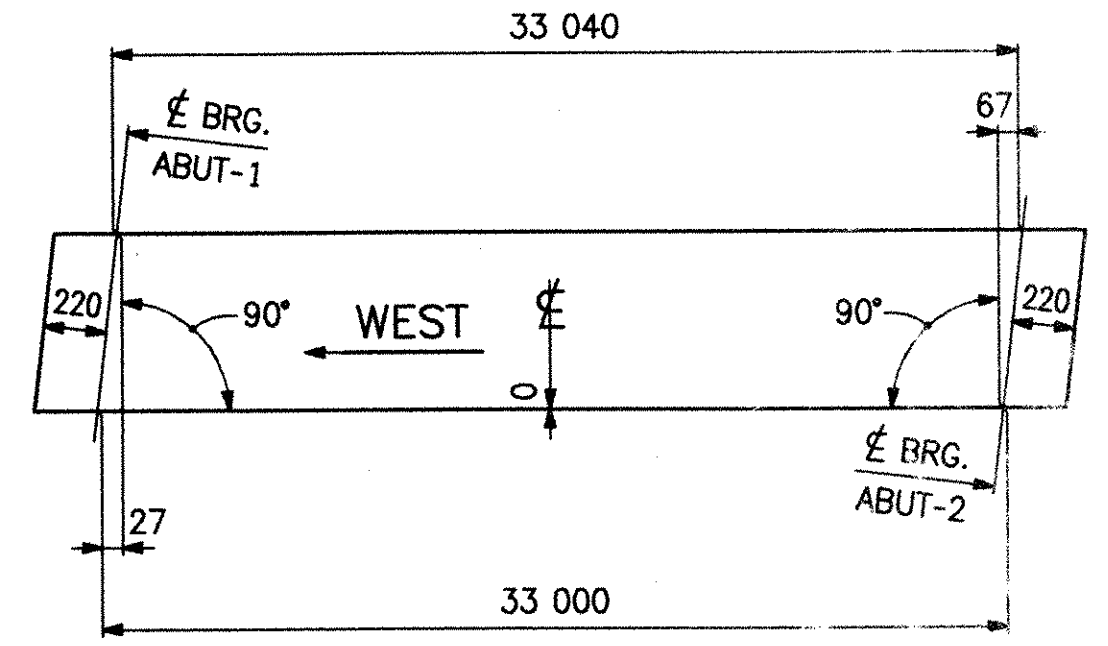
SECT. D



SECT. BL



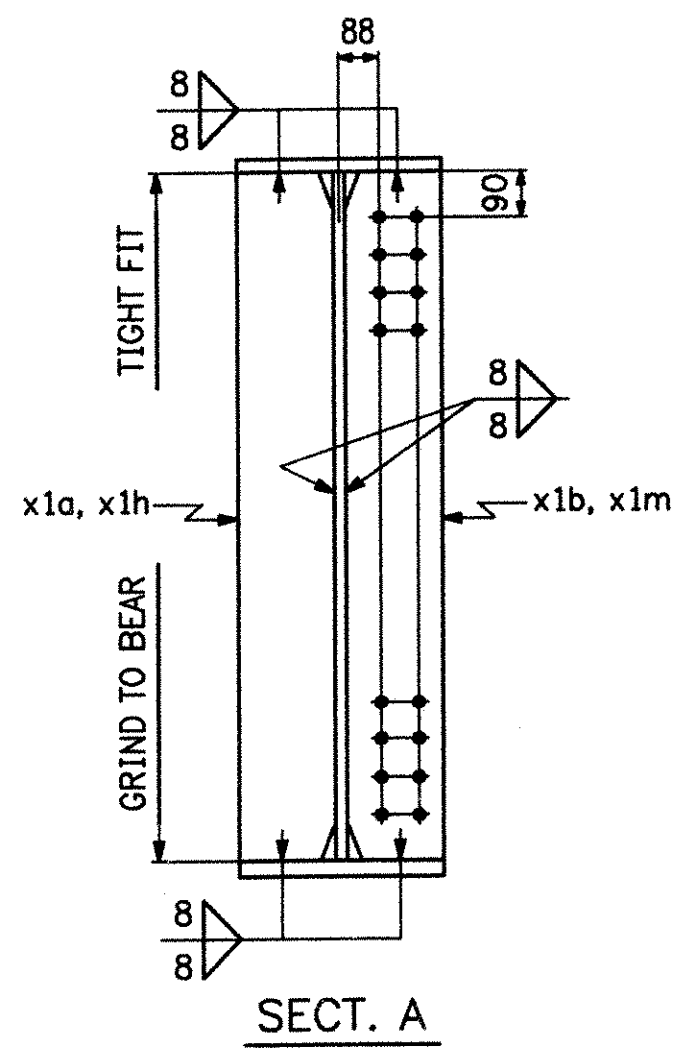
SECT. BR



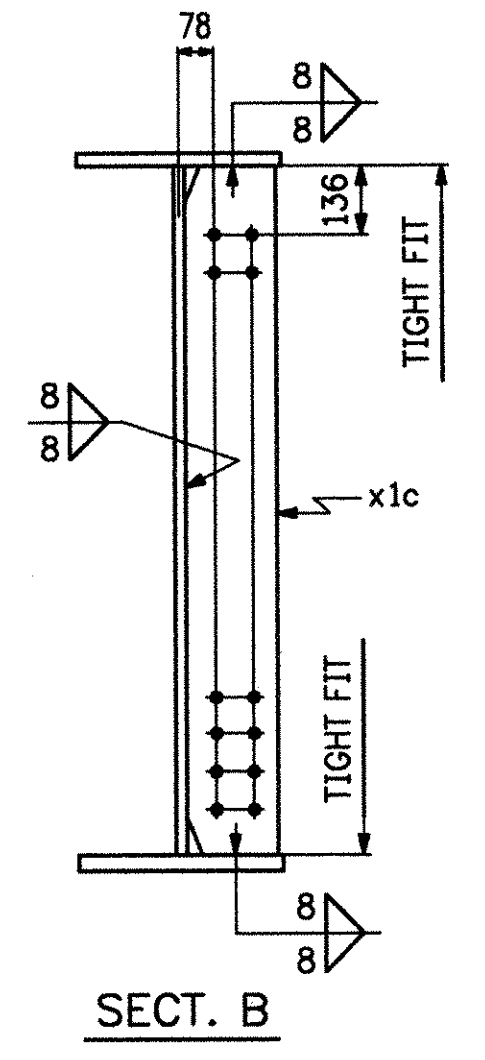
CAMBER DIAGRAM

NOTES:  
 HOLES: 1/8" Ø  
 BOLTS: NONE  
 MAT'L: M270M-345W (UN).  
 PAINT: AS NOTED

RECEIVED  
 CK'D BY: *WB* OK'D BY: \_\_\_\_\_  
 MAY 18 2006  
 RESUBMIT APPROVED ✓  
 BY: *WJ* DATE: *4/11/06*

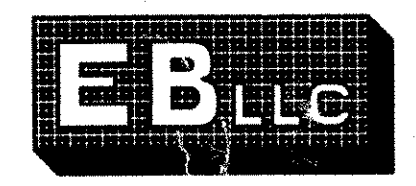


SECT. A



SECT. B

REV.	DATE	DESCRIPTION	QTY.	DATE	ISSUED TO	FOR
1			8	5/15/06	F W Whitcomb	Approval



PROJECT: T.H.1 OVER MENDON BROOK (BRIDGE NO. 3)		DRAWING TITLE: GIRDER ~ 5G5A	
LOCATION: TOWN OF MENDON, COUNTY OF RUTLAND		DRAWN BY: JF 4-18-06	
ENGINEER: STATE OF VERMONT AGENCY OF TRANSPORTATION		JOB NUMBER: 6085	
CUSTOMER: FRANK W WHITCOMB CONSTRUCTION		CHECKED BY: FM 5-3-06	
EASTERN BRIDGE LLC RURAL RTE 2, BOX 102 CLAREMONT, NH 03583 603-542-5202		SHEET NUMBER: 5	