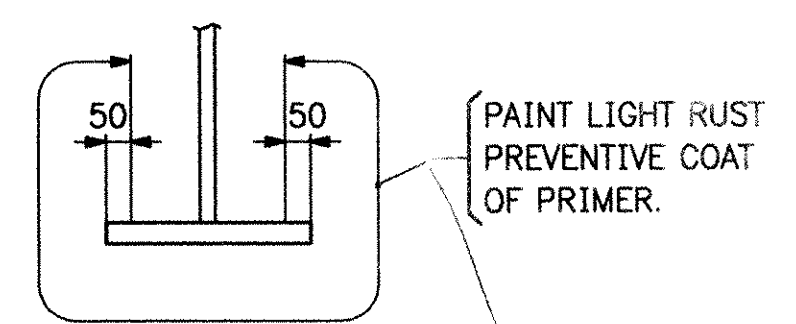
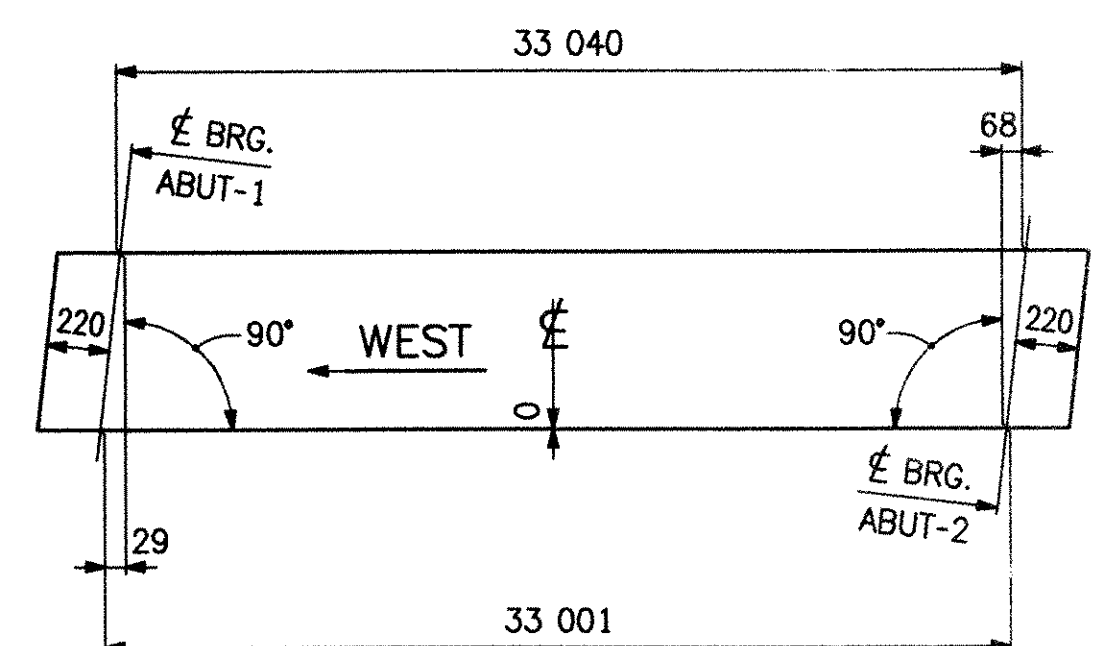


ABM INFC		SHIP		BILL OF MATERIAL				JOB NO. 6085	
PAGE	LINE	MARK	QTY.	MARK	MATERIAL	LENGTH	REMARKS	WEIGHT	PROCUREMENT NOTES
		4G4A	ONE		GIRDER			11 926 kg	
1	13		1	WB1	PL 16 x 1372	12 217	M270M-345WT2		
1	12		1	WB2	PL 16 x 1372	21 200	M270M-345WT2		
1	18		1	TF1	PL 22 x 406	22 217			
1	19		1	TF2	PL 22 x 406	11 200			
1	20		1	BF1	PL 28 x 406	22 220	M270M-345WT2		
1	21		1	BF2	PL 28 x 406	11 221	M270M-345WT2		
2	2		2	x1b	PL 22 x 195	1372			
2	2		2	x1m	PL 22 x 195	1374			
2	3		6	x1c	PL 14 x 185	1372			
2	3		6	x1d	PL 14 x 185	1372			

PAINT ALL AROUND (UN)
SEE SHT. GN1



SECT. PC
(STIFFS. NOT SHOWN)

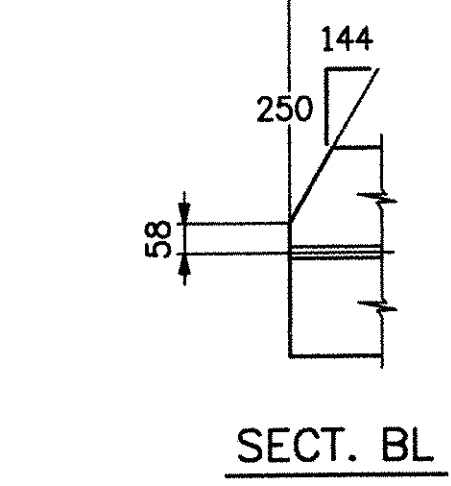


CAMBER DIAGRAM

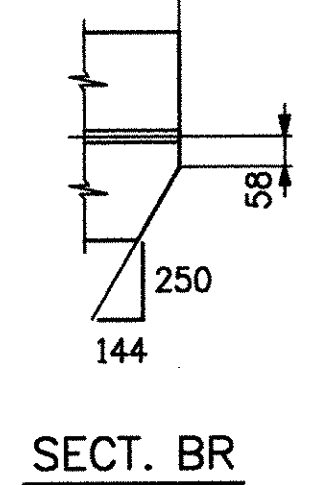
RECEIVED
 CK'D BY: *WJ* OK'D BY: _____
 MAY 18 2006
 RESUBMIT: _____ APPROVED: *[Signature]*
 BY: *WJ* DATE: 6/17/06

ONE ~ GIRDER ~ 4G4A
 FOR GDR. STANDARD DETAILS, SEE SHT. X1
 FOR WEB CAMBER & FLANGE DIAGRAM SEE SHT. WC4.
 FOR GENERAL NOTES & TYPICAL DETAILS SEE SHT. GN1

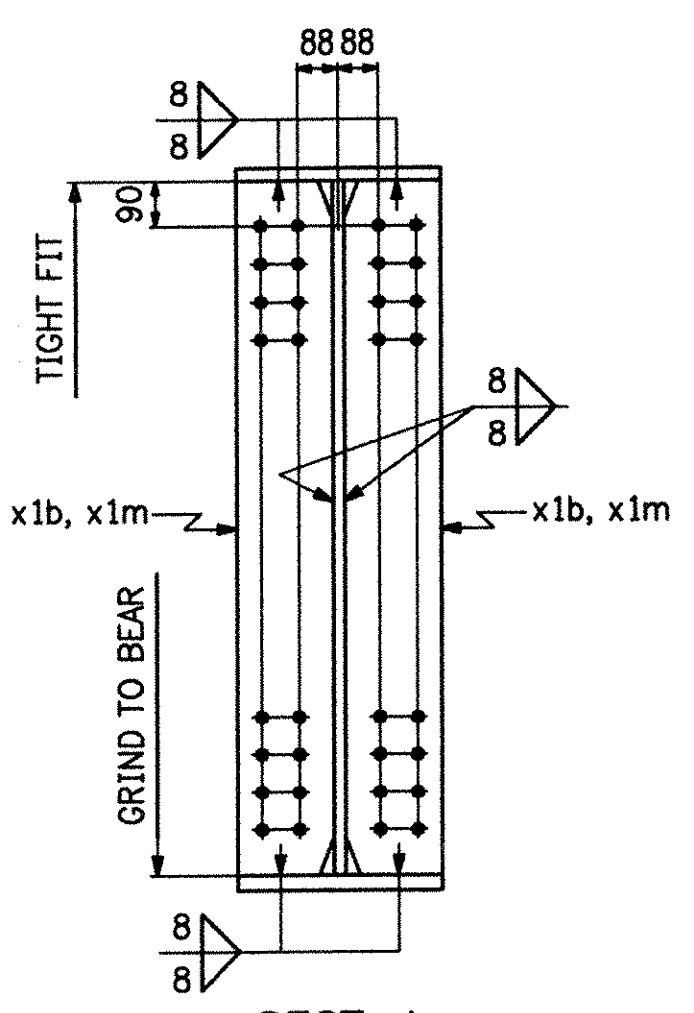
NOTES:
 HOLES: 1/8" Ø
 BOLTS: NONE
 MAT'L: M270M-345W (UN).
 PAINT: AS NOTED



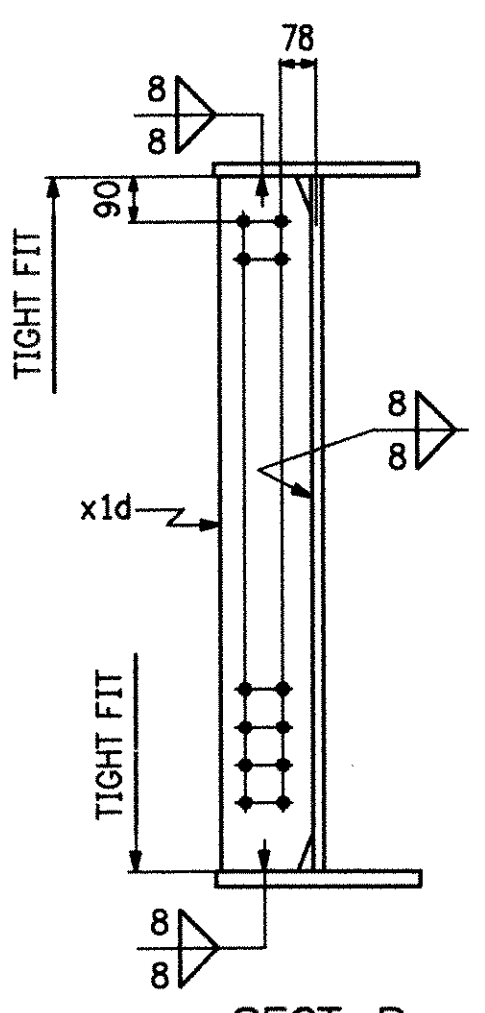
SECT. BL



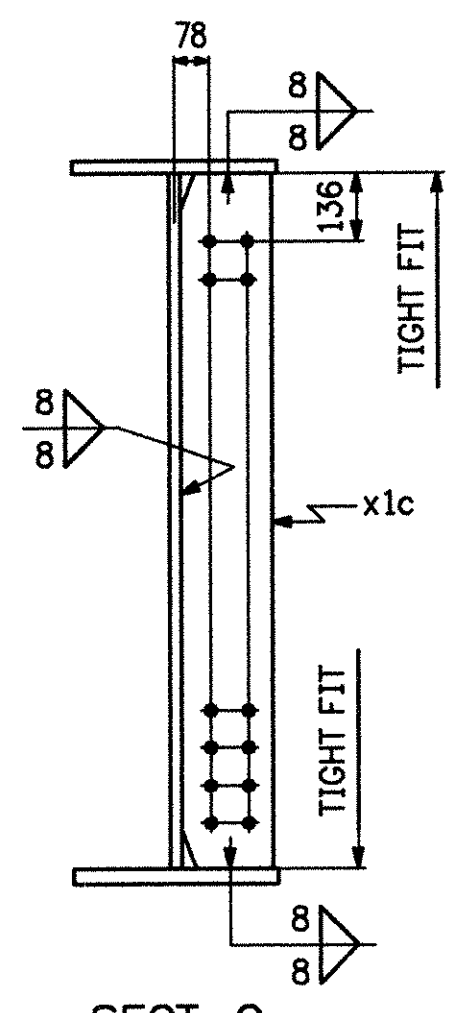
SECT. BR



SECT. A

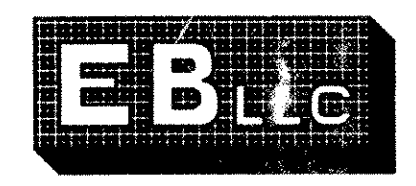


SECT. B



SECT. C

REV.	DATE	DESCRIPTION	QTY.	DATE	ISSUED TO	FOR
8	5/15/06	F.W. Whitcomb				Approval



EASTERN BRIDGE LLC
 RURAL RTE 2, BOX 302
 CLAREMONT, NH 03743
 603-542-5207

PROJECT:	T.H.1 OVER MENDON BROOK (BRIDGE NO. 3)
LOCATION:	TOWN OF MENDON, COUNTY OF RUTLAND
ENGINEER:	STATE OF VERMONT AGENCY OF TRANSPORTATION
CUSTOMER:	FRANK W. WHITCOMB CONSTRUCTION
DRAWING TITLE:	GIRDER ~ 4G4A
DRAWN BY:	JF 4-18-06
CHECKED BY:	FM 5-3-06
JOB NUMBER:	6085
SHEET NUMBER:	4