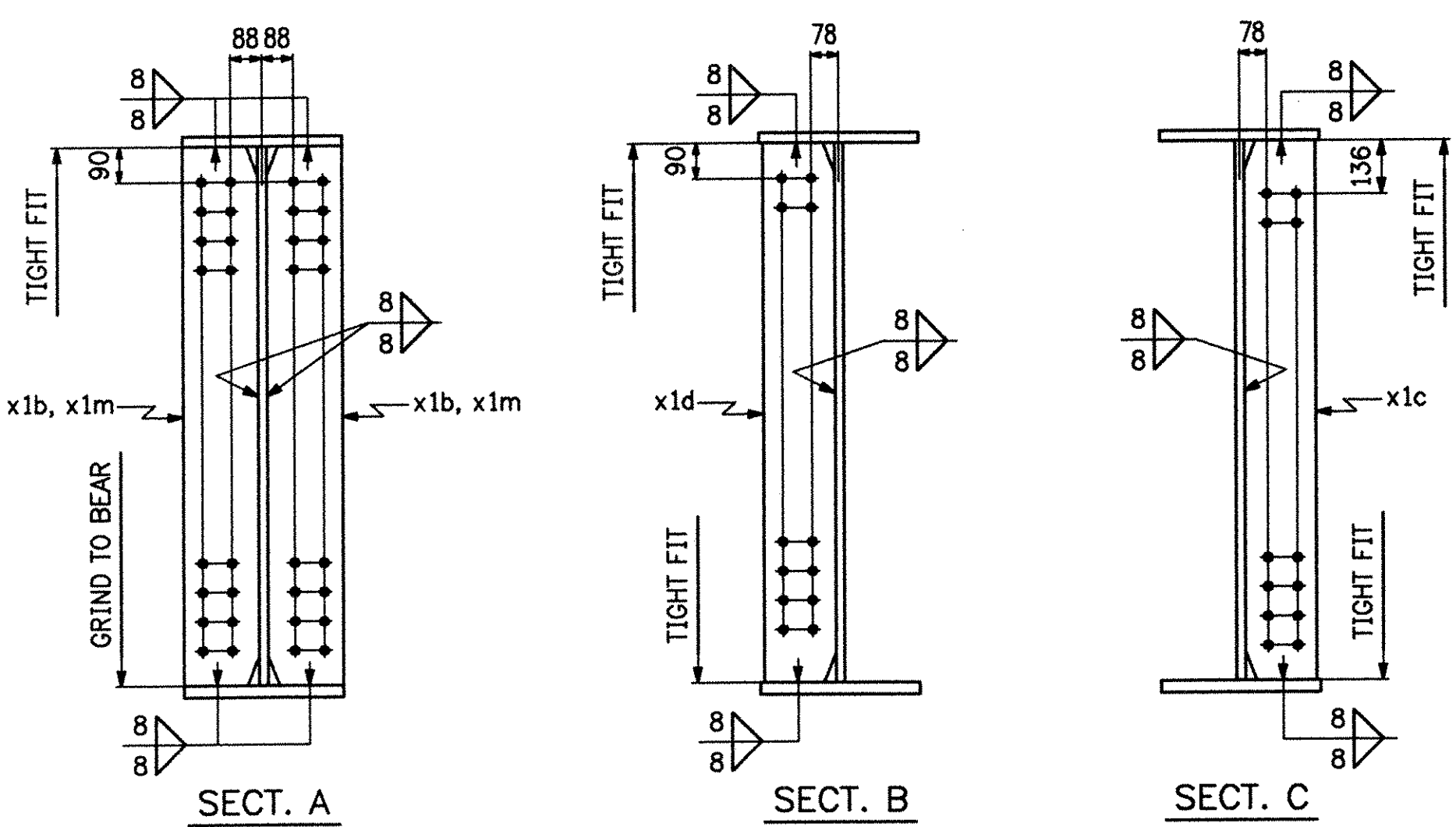
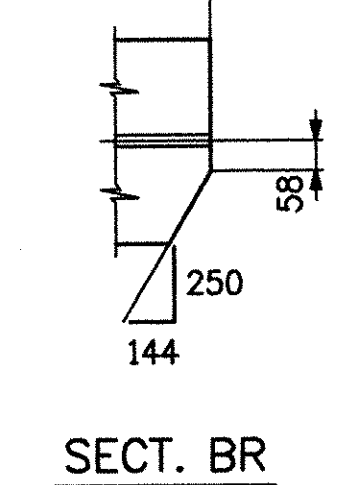
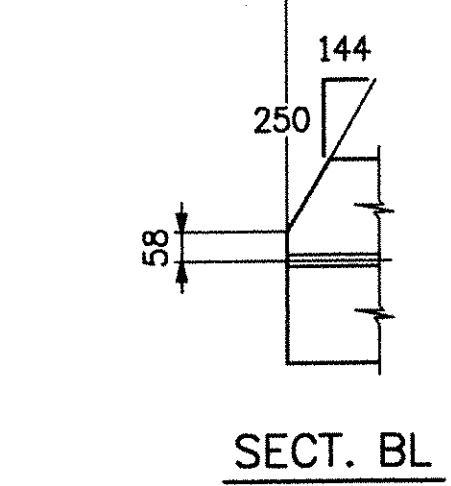


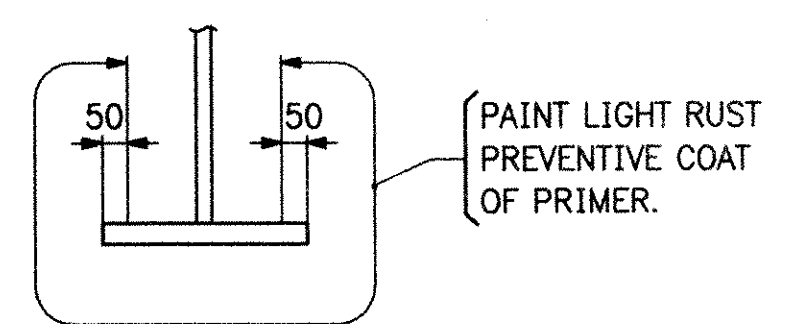
ONE ~ GIRDER ~ 2G2A
 FOR GDR. STANDARD DETAILS, SEE SHT. X1
 FOR WEB CAMBER & FLANGE DIAGRAM SEE SHT. WC2.
 FOR GENERAL NOTES & TYPICAL DETAILS SEE SHT. GN1



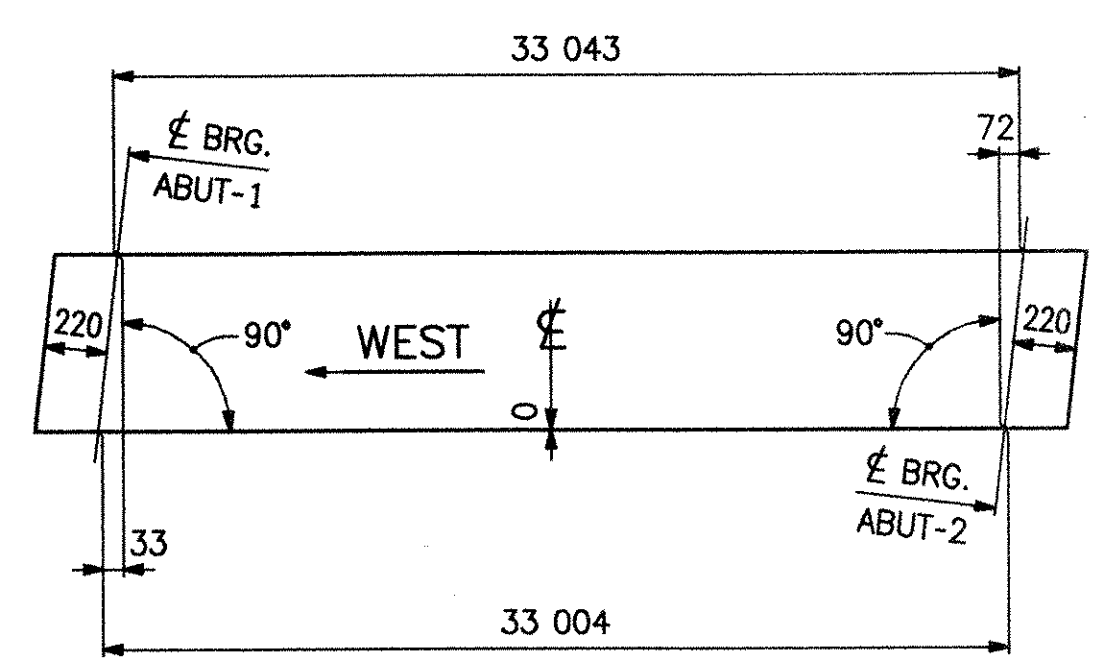
NOTES:
 HOLES: 1/8" Ø
 BOLTS: NONE
 MAT'L: M270M-345W (UN).
 PAINT: AS NOTED

ASM INFO		SHIP		BILL OF MATERIAL				JOB No. 6085	
PAGE	LINE	MARK	QTY.	MARK	MATERIAL	LENGTH MILLIMETERS	REMARKS	WEIGHT	PROCUREMENT NOTES
		2G2A	ONE		GIRDER			11 927 kg	
1	13		1	WB1	PL 16 x 1372	12 218	M270M-345WT2		
1	12		1	WB2	PL 16 x 1372	21 298	M270M-345WT2		
1	18		1	TF1	PL 22 x 406	22 220			
1	19		1	TF2	PL 22 x 406	11 263			
1	20		1	BF1	PL 28 x 406	22 220	M270M-345WT2		
1	21		1	BF2	PL 28 x 406	11 224	M270M-345WT2		
2	2		2	x1b	PL 22 x 195	1372			
2	2		2	x1m	PL 22 x 195	1374			
2	3		6	x1c	PL 14 x 185	1372			
2	3		6	x1d	PL 14 x 185	1372			

PAINT ALL AROUND (UN)
SEE SHT. GN1

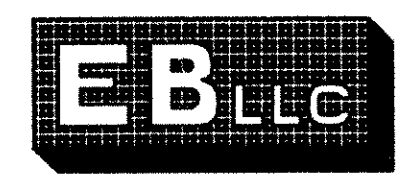


SECT. PC
(STIFFS. NOT SHOWN)



RECEIVED
 OK'D BY: *W.P.* OK'D BY: _____
 MAY 18 2006
 RESUBMIT APPROVED
 BY: *W.P.* DATE: *4/18/06*

REV.	DATE	DESCRIPTION	QTY.	DATE	ISSUED TO	FOR



EASTERN BRIDGE LLC
 RURAL RTE 2, BOX 302
 CLAREMONT, NH 03743
 603-542-5202

PROJECT: T.H.1 OVER MENDON BROOK (BRIDGE NO. 3)
 LOCATION: TOWN OF MENDON, COUNTY OF RUTLAND
 ENGINEER: STATE OF VERMONT AGENCY OF TRANSPORTATION
 CUSTOMER: FRANK W. WHITCOMB CONSTRUCTION

DRAWING TITLE: GIRDER ~ 2G2A
 DRAWN BY: JF 4-18-06 JOB NUMBER: 6085 SHEET NUMBER: 2
 CHECKED BY: FM 5-3-06

Sheet 2 - Printed: 05/04/2006 @ 10:35 (RETAIRED)