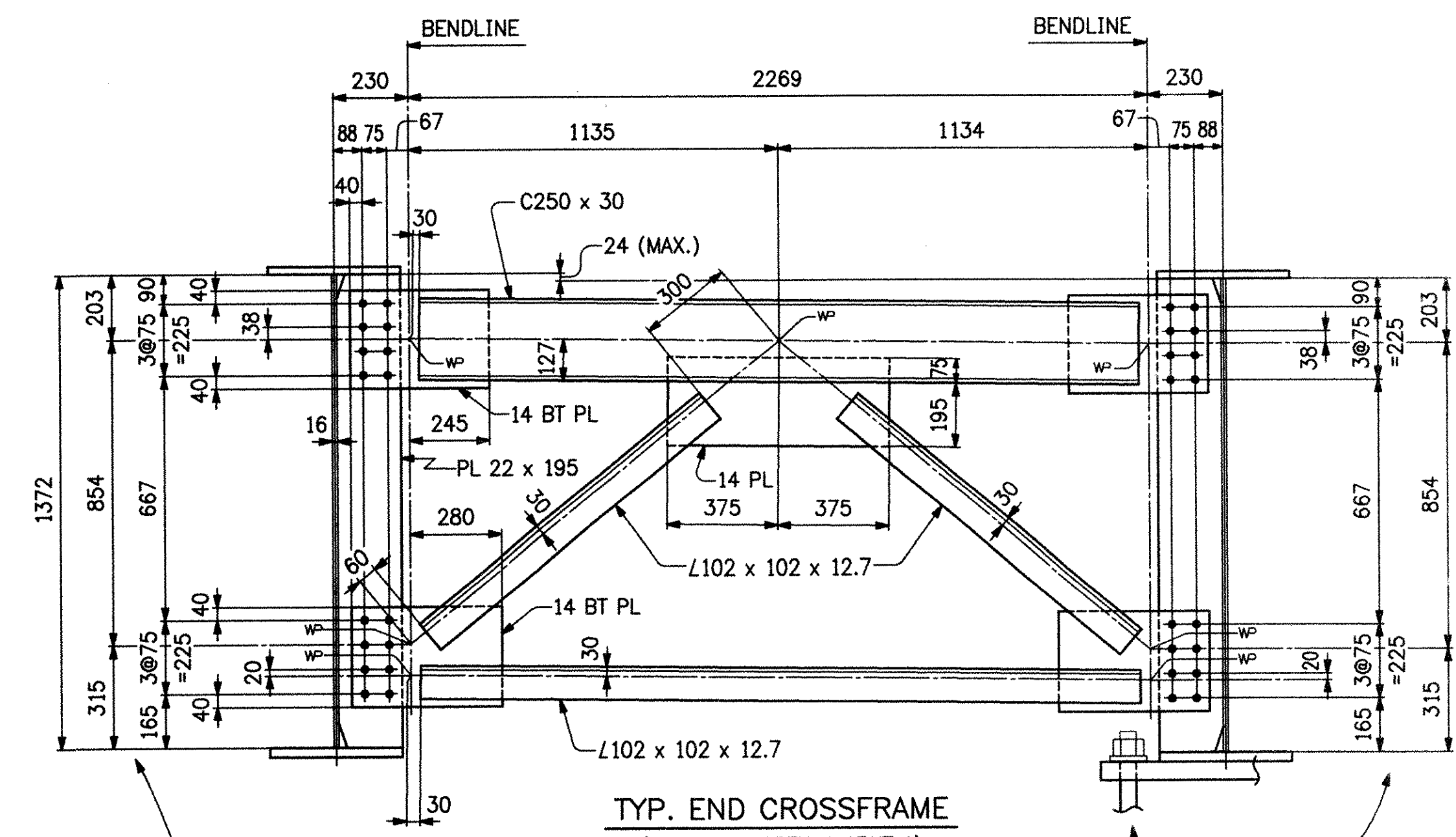
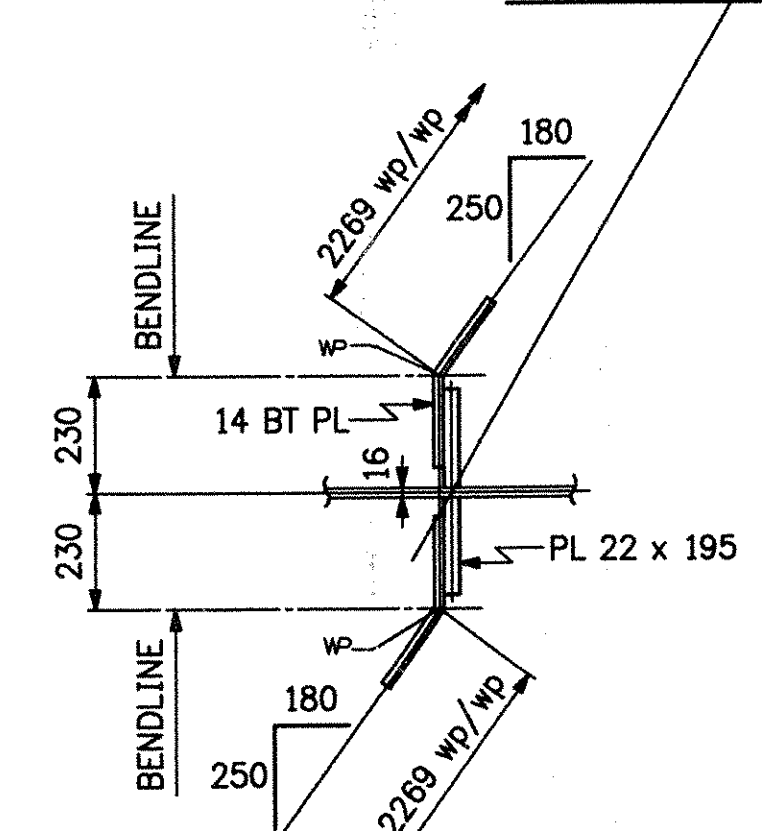
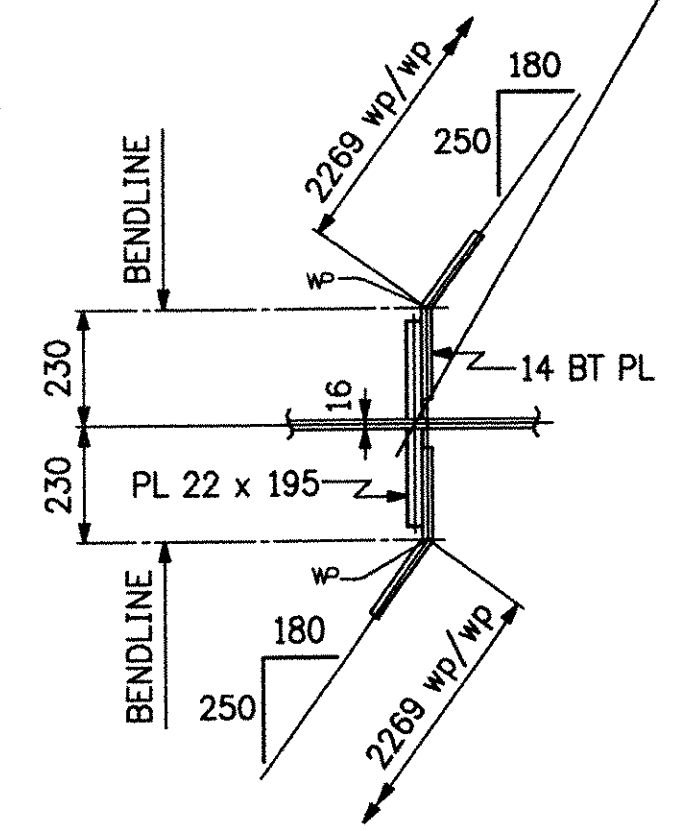
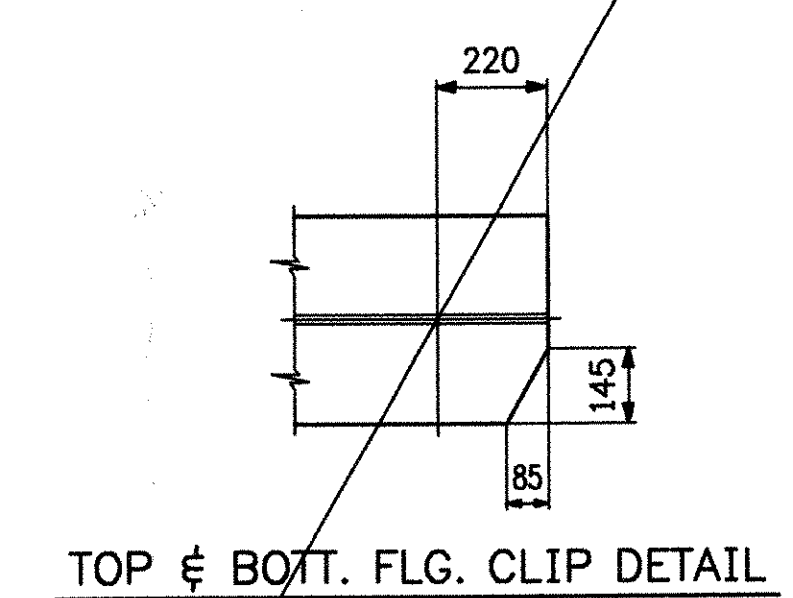
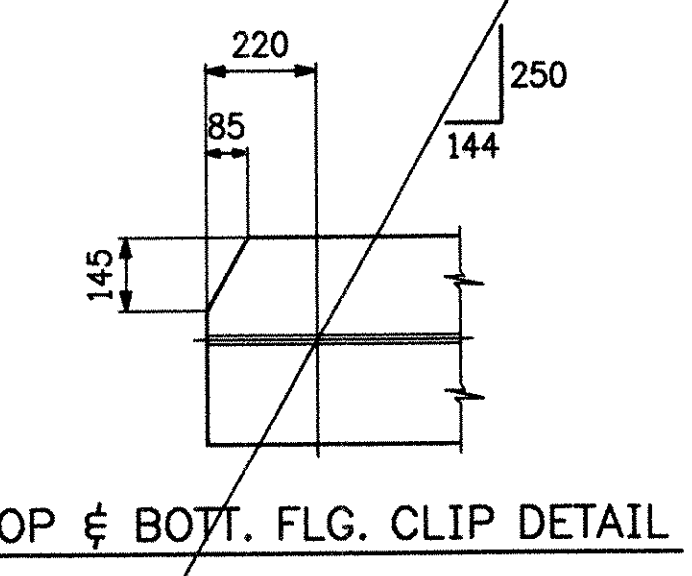


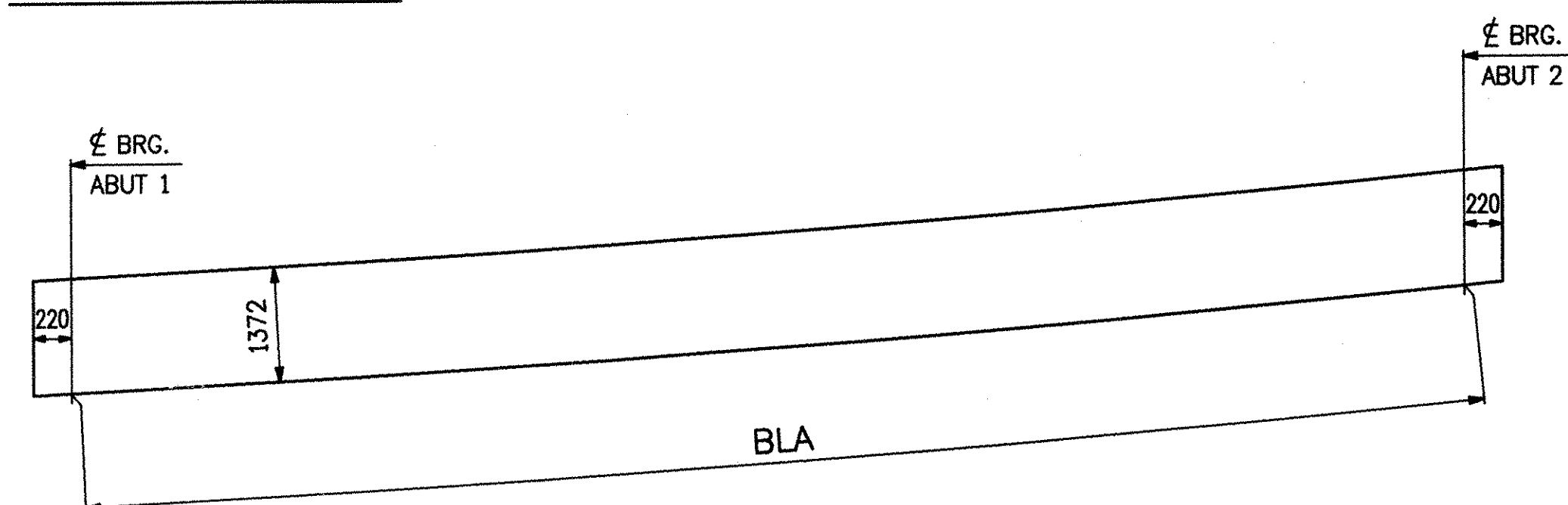
**INT. CROSSFRAME**  
(LOOKING NORTH)  
24  $\phi$  (1/8) HOLES FOR 22  $\phi$  (5/8) HSBs



**TYP. END CROSSFRAME**  
(LOOKING NORTH @ ABUT 1)  
(LOOKING SOUTH @ ABUT 2)  
24  $\phi$  (1/8) HOLES FOR 22  $\phi$  (5/8) HSBs (CFK7)

**ENG'R VERIFY:**  
RAISED CF STRUT TO CLEAR ANCHOR BOLTS.

- NOTES:**
- LONGITUDINAL DIMS. ARE SLOPING ALONG BOTTOM OF GIRDER IN CAMBERED POSITION.
  - TRANSVERSE DIMS. ARE HORIZONTAL.
  - DENOTES DROP (FINAL). ARROW POINTS TO LOW END.
  - BRG. STIFFS & ENDS OF GIRDERS ARE VERTICAL IN FINAL POSITION.
  - INT. CONN. PLATES ARE NORMAL TO BOTTOM FLANGE.



**TYP. ELEVATION**

LINE	BLA	FINAL GRADE @ BRGS.	LINE	ABUT. 1	ABUT. 2
1	33 006		1	.0241	.0544
2	33 004		2	.0229	.0532
3	33 003		3	.0216	.0520
4	33 001		4	.0204	.0507
5	33 000		5	.0192	.0495

**RECEIVED**  
CK'D BY: *WJ* CK'D BY: \_\_\_\_\_  
MAY 18 2006  
RESUBMIT APPROVED  
BY: *WJ* DATE: *4/14/06*

REV.	DATE	DESCRIPTION	QTY.	DATE	ISSUED TO	FOR

**EASTERN BRIDGE LLC**  
RURAL RTE 2, BOX 302  
CLAREMONT, NH 03743  
603-542-5202

PROJECT: T.H.1 OVER MENDON BROOK (BRIDGE NO. 3)  
LOCATION: TOWN OF MENDON, COUNTY OF RUTLAND  
ENGINEER: STATE OF VERMONT AGENCY OF TRANSPORTATION  
CUSTOMER: FRANK W. WHITCOMB CONSTRUCTION  
DRAWING TITLE: CALC. PLAN & LAYOUTS  
DRAWN BY: *SK* 3-30-06 JOB NUMBER: 6085 SHEET NUMBER: WS1  
CHECKED BY: *CR* 5-1-06

THIS IS A WORK DRAWING. ITS FUNCTION IS TO PROVIDE BASIC DIMENSIONS AND CONCEPTS FOR USE IN THE PREPARATION OF THE SHOP DETAILS. IT IS NOT INTENDED TO BE USED FOR ERECTION OR FABRICATION.